

VERDAD RESOURCES

WATTENBERG FIELD

1N-64W-10 TIGER 0916 PAD

TIGER 0916-05H

Wellbore #1

Plan: Design #1

Standard Planning Report

27 December, 2022

Project: WATTENBERG FIELD
Site: 1N-64W-10 TIGER 0916 PAD
Well: TIGER 0916-05H
Wellbore: Wellbore #1
Design: Design #1

VERDAD RESOURCES

CASING DETAILS

TVD	MD	Name	Size
2304.00	2470.88	9 5/8"	9-5/8

SHL
245' FNL
1371' FWL

LP/TPZ
460' FNL
2331' FEL

BPZ
460' FSL
2331' FEL

BHL
370' FSL
2331' FEL

SECTION DETAILS

MD	Inc	Azi	TVD	+N/-S	+E/-W	Dleg	TFace	VSect	Target
0.00	0.00	0.00	0.00	0.00	0.00	0.00	0.00	0.00	
300.75	0.00	0.00	300.75	0.00	0.00	0.00	0.00	0.00	
1885.25	31.69	277.21	1805.69	53.61	-423.75	2.00	277.21	-53.16	
7486.31	31.69	277.21	6571.65	422.89	-3342.86	0.00	0.00	-419.39	
8527.95	90.00	180.06	7150.00	-211.98	-3697.82	9.00	-96.09	215.85	
18382.44	90.00	180.06	7150.00	-10066.46	-3708.47	0.00	0.00	10070.33	TIGER 0916-05H_BHL

WELLBORE TARGET DETAILS

Name	TVD	Northing	Easting	Latitude	Longitude
TIGER 0916-05H_SHL	0.00	1270723.32	3268245.30	40.072546	-104.541468
TIGER 0916-05H_LP/TPZ	7150.00	1270471.67	3264550.04	40.071964	-104.554681
TIGER 0916-05H_BPZ	7150.00	1260707.36	3264647.14	40.045158	-104.554706
TIGER 0916-05H_BHL	7150.00	1260617.37	3264645.86	40.044911	-104.554714

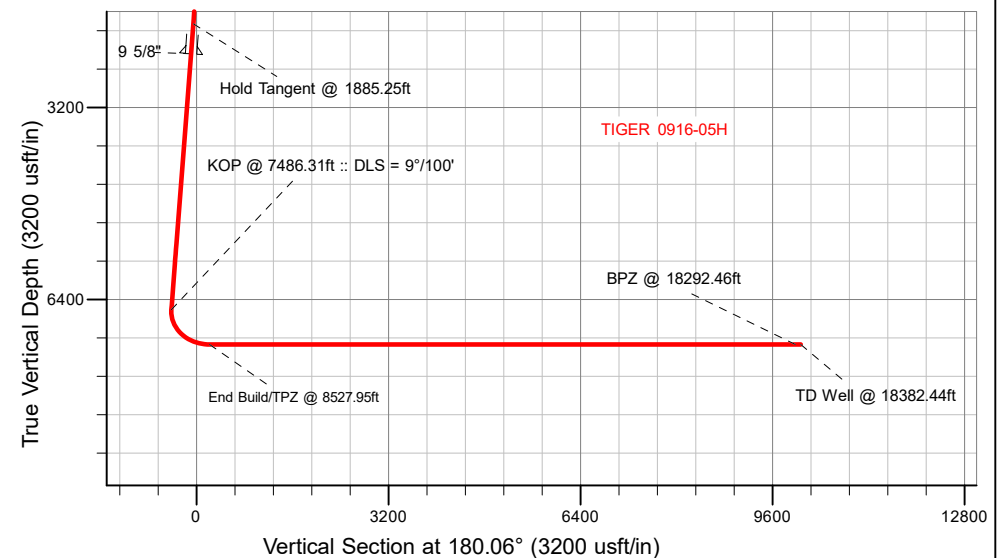
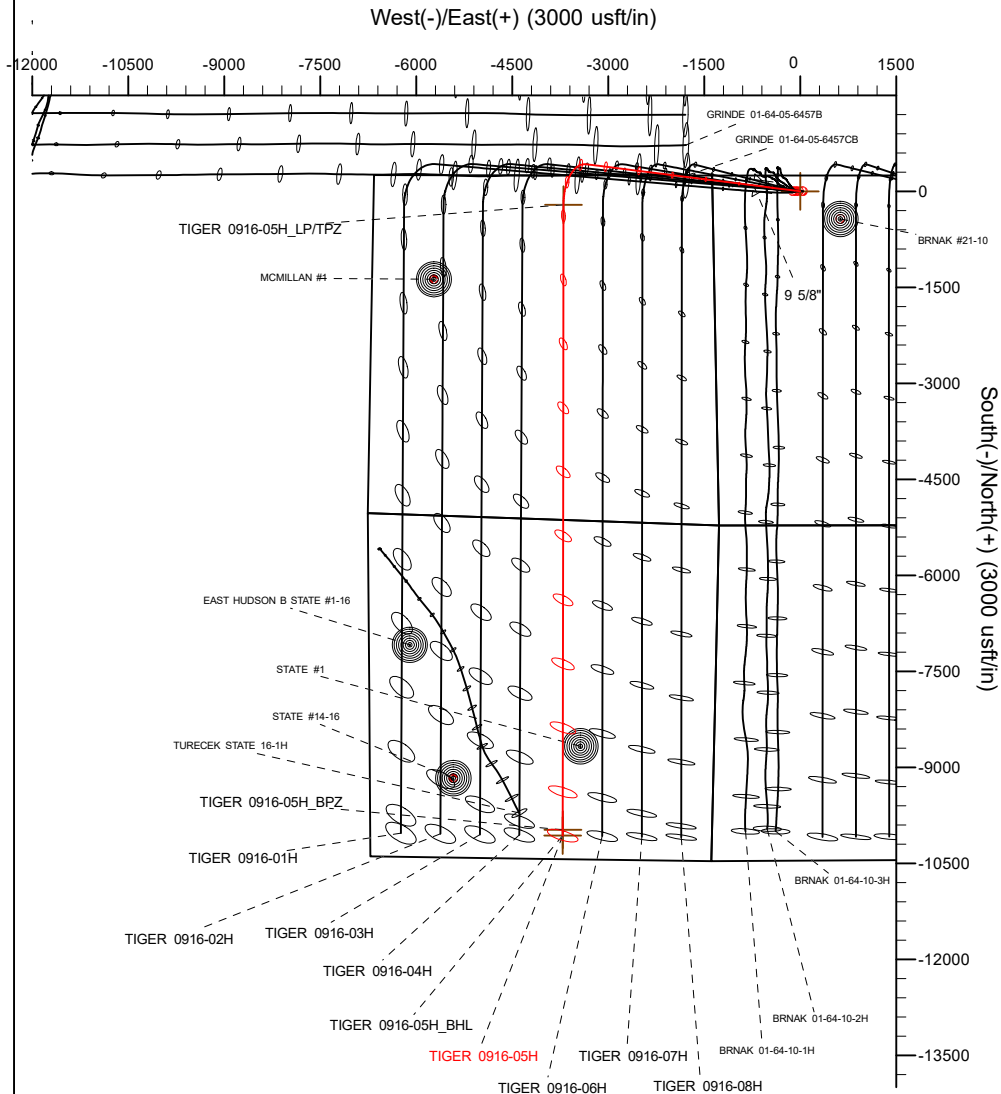
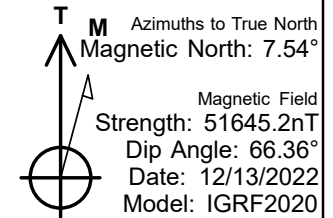
WELL DETAILS: TIGER 0916-05H

GL = 5105'

RKB = 24' @ 5129.00usft (RIG)

Plan: Design #1 (TIGER 0916-05H/Wellbore #1)

Date: 12/27/2022



Planning Report

Database:	EDM 5000.16 Single User Db	Local Co-ordinate Reference:	Well TIGER 0916-05H
Company:	VERDAD RESOURCES	TVD Reference:	RKB = 24' @ 5129.00usft (RIG)
Project:	WATTENBERG FIELD	MD Reference:	RKB = 24' @ 5129.00usft (RIG)
Site:	1N-64W-10 TIGER 0916 PAD	North Reference:	True
Well:	TIGER 0916-05H	Survey Calculation Method:	Minimum Curvature
Wellbore:	Wellbore #1		
Design:	Design #1		

Project	WATTENBERG FIELD		
Map System:	US State Plane 1983	System Datum:	Mean Sea Level
Geo Datum:	North American Datum 1983		
Map Zone:	Colorado Northern Zone		

Site	1N-64W-10 TIGER 0916 PAD			
Site Position:		Northing:	1,270,722.66 usft	Latitude: 40.072546
From:	Lat/Long	Easting:	3,268,181.22 usft	Longitude: -104.541697
Position Uncertainty:	0.00 usft	Slot Radius:	13-3/16 "	

Well	TIGER 0916-05H			
Well Position	+N/-S	0.00 usft	Northing:	1,270,723.32 usft
	+E/-W	0.00 usft	Easting:	3,268,245.30 usft
Position Uncertainty		3.28 usft	Wellhead Elevation:	usft
Grid Convergence:		0.62 °	Ground Level:	5,105.00 usft

Wellbore	Wellbore #1				
Magnetics	Model Name	Sample Date	Declination (°)	Dip Angle (°)	Field Strength (nT)
	IGRF202013	12/13/2022	7.54	66.36	51,645.21968453

Design	Design #1				
Audit Notes:					
Version:		Phase:	PLAN	Tie On Depth:	0.00
Vertical Section:	Depth From (TVD) (usft)	+N/-S (usft)	+E/-W (usft)	Direction (°)	
	0.00	0.00	0.00	180.06	

Plan Survey Tool Program		Date	12/27/2022		
Depth From (usft)	Depth To (usft)	Survey (Wellbore)	Tool Name	Remarks	
1	0.00	2,470.88	Design #1 (Wellbore #1)	ISCWSA MWD	
				Fixed:v2:standard declination	
2	2,470.88	18,382.44	Design #1 (Wellbore #1)	ISCWSA MWD	
				Fixed:v2:standard declination	

Planning Report

Database:	EDM 5000.16 Single User Db	Local Co-ordinate Reference:	Well TIGER 0916-05H
Company:	VERDAD RESOURCES	TVD Reference:	RKB = 24' @ 5129.00usft (RIG)
Project:	WATTENBERG FIELD	MD Reference:	RKB = 24' @ 5129.00usft (RIG)
Site:	1N-64W-10 TIGER 0916 PAD	North Reference:	True
Well:	TIGER 0916-05H	Survey Calculation Method:	Minimum Curvature
Wellbore:	Wellbore #1		
Design:	Design #1		

Plan Sections										
Measured Depth (usft)	Inclination (°)	Azimuth (°)	Vertical Depth (usft)	+N/-S (usft)	+E/-W (usft)	Dogleg Rate (°/100usft)	Build Rate (°/100usft)	Turn Rate (°/100usft)	TFO (°)	Target
0.00	0.00	0.00	0.00	0.00	0.00	0.00	0.00	0.00	0.00	
300.75	0.00	0.00	300.75	0.00	0.00	0.00	0.00	0.00	0.00	
1,885.25	31.69	277.21	1,805.69	53.61	-423.75	2.00	2.00	0.00	277.21	
7,486.31	31.69	277.21	6,571.65	422.89	-3,342.86	0.00	0.00	0.00	0.00	
8,527.95	90.00	180.06	7,150.00	-211.98	-3,697.82	9.00	5.60	-9.33	-96.09	
18,382.44	90.00	180.06	7,150.00	-10,066.46	-3,708.47	0.00	0.00	0.00	0.00	TIGER 0916-05H_BH

Planning Report

Database:	EDM 5000.16 Single User Db	Local Co-ordinate Reference:	Well TIGER 0916-05H
Company:	VERDAD RESOURCES	TVD Reference:	RKB = 24' @ 5129.00usft (RIG)
Project:	WATTENBERG FIELD	MD Reference:	RKB = 24' @ 5129.00usft (RIG)
Site:	1N-64W-10 TIGER 0916 PAD	North Reference:	True
Well:	TIGER 0916-05H	Survey Calculation Method:	Minimum Curvature
Wellbore:	Wellbore #1		
Design:	Design #1		

Planned Survey									
Measured Depth (usft)	Inclination (°)	Azimuth (°)	Vertical Depth (usft)	+N/-S (usft)	+E/-W (usft)	Vertical Section (usft)	Dogleg Rate (°/100usft)	Build Rate (°/100usft)	Turn Rate (°/100usft)
0.00	0.00	0.00	0.00	0.00	0.00	0.00	0.00	0.00	0.00
100.00	0.00	0.00	100.00	0.00	0.00	0.00	0.00	0.00	0.00
200.00	0.00	0.00	200.00	0.00	0.00	0.00	0.00	0.00	0.00
300.75	0.00	0.00	300.75	0.00	0.00	0.00	0.00	0.00	0.00
Begin Nudge @ 300.75ft									
400.00	1.98	277.21	399.98	0.22	-1.71	-0.21	2.00	2.00	0.00
500.00	3.98	277.21	499.84	0.87	-6.87	-0.86	2.00	2.00	0.00
600.00	5.98	277.21	599.46	1.96	-15.49	-1.94	2.00	2.00	0.00
700.00	7.98	277.21	698.71	3.49	-27.56	-3.46	2.00	2.00	0.00
800.00	9.98	277.21	797.48	5.45	-43.05	-5.40	2.00	2.00	0.00
900.00	11.98	277.21	895.64	7.84	-61.95	-7.77	2.00	2.00	0.00
1,000.00	13.98	277.21	993.08	10.66	-84.24	-10.57	2.00	2.00	0.00
1,100.00	15.98	277.21	1,089.67	13.90	-109.89	-13.79	2.00	2.00	0.00
1,200.00	17.98	277.21	1,185.31	17.57	-138.87	-17.42	2.00	2.00	0.00
1,300.00	19.98	277.21	1,279.86	21.65	-171.15	-21.47	2.00	2.00	0.00
1,400.00	21.98	277.21	1,373.22	26.15	-206.67	-25.93	2.00	2.00	0.00
1,500.00	23.98	277.21	1,465.28	31.05	-245.41	-30.79	2.00	2.00	0.00
1,600.00	25.98	277.21	1,555.92	36.35	-287.32	-36.05	2.00	2.00	0.00
1,700.00	27.98	277.21	1,645.02	42.04	-332.33	-41.69	2.00	2.00	0.00
1,800.00	29.98	277.21	1,732.49	48.12	-380.40	-47.73	2.00	2.00	0.00
1,885.25	31.69	277.21	1,805.69	53.61	-423.75	-53.16	2.00	2.00	0.00
Hold Tangent @ 1885.25ft									
1,900.00	31.69	277.21	1,818.24	54.58	-431.44	-54.13	0.00	0.00	0.00
2,000.00	31.69	277.21	1,903.33	61.17	-483.56	-60.67	0.00	0.00	0.00
2,100.00	31.69	277.21	1,988.42	67.77	-535.68	-67.21	0.00	0.00	0.00
2,200.00	31.69	277.21	2,073.51	74.36	-587.79	-73.74	0.00	0.00	0.00
2,300.00	31.69	277.21	2,158.60	80.95	-639.91	-80.28	0.00	0.00	0.00
2,400.00	31.69	277.21	2,243.69	87.55	-692.03	-86.82	0.00	0.00	0.00
2,470.88	31.69	277.21	2,304.00	92.22	-728.96	-91.46	0.00	0.00	0.00
9 5/8"									
2,500.00	31.69	277.21	2,328.78	94.14	-744.14	-93.36	0.00	0.00	0.00
2,600.00	31.69	277.21	2,413.87	100.73	-796.26	-99.90	0.00	0.00	0.00
2,700.00	31.69	277.21	2,498.96	107.33	-848.38	-106.44	0.00	0.00	0.00
2,800.00	31.69	277.21	2,584.05	113.92	-900.49	-112.98	0.00	0.00	0.00
2,900.00	31.69	277.21	2,669.14	120.51	-952.61	-119.51	0.00	0.00	0.00
3,000.00	31.69	277.21	2,754.23	127.10	-1,004.73	-126.05	0.00	0.00	0.00
3,100.00	31.69	277.21	2,839.32	133.70	-1,056.85	-132.59	0.00	0.00	0.00
3,200.00	31.69	277.21	2,924.41	140.29	-1,108.96	-139.13	0.00	0.00	0.00
3,300.00	31.69	277.21	3,009.50	146.88	-1,161.08	-145.67	0.00	0.00	0.00
3,400.00	31.69	277.21	3,094.60	153.48	-1,213.20	-152.21	0.00	0.00	0.00
3,500.00	31.69	277.21	3,179.69	160.07	-1,265.31	-158.75	0.00	0.00	0.00
3,600.00	31.69	277.21	3,264.78	166.66	-1,317.43	-165.28	0.00	0.00	0.00
3,700.00	31.69	277.21	3,349.87	173.26	-1,369.55	-171.82	0.00	0.00	0.00
3,800.00	31.69	277.21	3,434.96	179.85	-1,421.66	-178.36	0.00	0.00	0.00
3,900.00	31.69	277.21	3,520.05	186.44	-1,473.78	-184.90	0.00	0.00	0.00
4,000.00	31.69	277.21	3,605.14	193.04	-1,525.90	-191.44	0.00	0.00	0.00
4,100.00	31.69	277.21	3,690.23	199.63	-1,578.01	-197.98	0.00	0.00	0.00
4,200.00	31.69	277.21	3,775.32	206.22	-1,630.13	-204.52	0.00	0.00	0.00
4,300.00	31.69	277.21	3,860.41	212.82	-1,682.25	-211.05	0.00	0.00	0.00
4,400.00	31.69	277.21	3,945.50	219.41	-1,734.37	-217.59	0.00	0.00	0.00
4,500.00	31.69	277.21	4,030.59	226.00	-1,786.48	-224.13	0.00	0.00	0.00
4,600.00	31.69	277.21	4,115.68	232.60	-1,838.60	-230.67	0.00	0.00	0.00
4,700.00	31.69	277.21	4,200.77	239.19	-1,890.72	-237.21	0.00	0.00	0.00

Planning Report

Database:	EDM 5000.16 Single User Db	Local Co-ordinate Reference:	Well TIGER 0916-05H
Company:	VERDAD RESOURCES	TVD Reference:	RKB = 24' @ 5129.00usft (RIG)
Project:	WATTENBERG FIELD	MD Reference:	RKB = 24' @ 5129.00usft (RIG)
Site:	1N-64W-10 TIGER 0916 PAD	North Reference:	True
Well:	TIGER 0916-05H	Survey Calculation Method:	Minimum Curvature
Wellbore:	Wellbore #1		
Design:	Design #1		

Planned Survey									
Measured Depth (usft)	Inclination (°)	Azimuth (°)	Vertical Depth (usft)	+N/-S (usft)	+E/-W (usft)	Vertical Section (usft)	Dogleg Rate (°/100usft)	Build Rate (°/100usft)	Turn Rate (°/100usft)
4,800.00	31.69	277.21	4,285.86	245.78	-1,942.83	-243.75	0.00	0.00	0.00
4,900.00	31.69	277.21	4,370.95	252.37	-1,994.95	-250.29	0.00	0.00	0.00
5,000.00	31.69	277.21	4,456.04	258.97	-2,047.07	-256.82	0.00	0.00	0.00
5,100.00	31.69	277.21	4,541.13	265.56	-2,099.18	-263.36	0.00	0.00	0.00
5,200.00	31.69	277.21	4,626.22	272.15	-2,151.30	-269.90	0.00	0.00	0.00
5,300.00	31.69	277.21	4,711.31	278.75	-2,203.42	-276.44	0.00	0.00	0.00
5,400.00	31.69	277.21	4,796.40	285.34	-2,255.53	-282.98	0.00	0.00	0.00
5,500.00	31.69	277.21	4,881.49	291.93	-2,307.65	-289.52	0.00	0.00	0.00
5,600.00	31.69	277.21	4,966.58	298.53	-2,359.77	-296.06	0.00	0.00	0.00
5,700.00	31.69	277.21	5,051.67	305.12	-2,411.89	-302.59	0.00	0.00	0.00
5,800.00	31.69	277.21	5,136.76	311.71	-2,464.00	-309.13	0.00	0.00	0.00
5,900.00	31.69	277.21	5,221.85	318.31	-2,516.12	-315.67	0.00	0.00	0.00
6,000.00	31.69	277.21	5,306.94	324.90	-2,568.24	-322.21	0.00	0.00	0.00
6,100.00	31.69	277.21	5,392.03	331.49	-2,620.35	-328.75	0.00	0.00	0.00
6,200.00	31.69	277.21	5,477.12	338.09	-2,672.47	-335.29	0.00	0.00	0.00
6,300.00	31.69	277.21	5,562.21	344.68	-2,724.59	-341.83	0.00	0.00	0.00
6,400.00	31.69	277.21	5,647.30	351.27	-2,776.70	-348.36	0.00	0.00	0.00
6,500.00	31.69	277.21	5,732.39	357.86	-2,828.82	-354.90	0.00	0.00	0.00
6,600.00	31.69	277.21	5,817.48	364.46	-2,880.94	-361.44	0.00	0.00	0.00
6,700.00	31.69	277.21	5,902.57	371.05	-2,933.05	-367.98	0.00	0.00	0.00
6,800.00	31.69	277.21	5,987.66	377.64	-2,985.17	-374.52	0.00	0.00	0.00
6,900.00	31.69	277.21	6,072.75	384.24	-3,037.29	-381.06	0.00	0.00	0.00
7,000.00	31.69	277.21	6,157.85	390.83	-3,089.41	-387.60	0.00	0.00	0.00
7,100.00	31.69	277.21	6,242.94	397.42	-3,141.52	-394.13	0.00	0.00	0.00
7,200.00	31.69	277.21	6,328.03	404.02	-3,193.64	-400.67	0.00	0.00	0.00
7,300.00	31.69	277.21	6,413.12	410.61	-3,245.76	-407.21	0.00	0.00	0.00
7,400.00	31.69	277.21	6,498.21	417.20	-3,297.87	-413.75	0.00	0.00	0.00
7,486.31	31.69	277.21	6,571.65	422.89	-3,342.86	-419.39	0.00	0.00	0.00
KOP @ 7486.31ft :: DLS = 9°/100'									
7,500.00	31.58	274.87	6,583.30	423.65	-3,349.99	-420.14	9.00	-0.80	-17.09
7,550.00	31.55	266.27	6,625.93	423.91	-3,376.11	-420.37	9.00	-0.07	-17.21
7,600.00	32.08	257.79	6,668.44	420.25	-3,402.15	-416.68	9.00	1.07	-16.96
7,650.00	33.16	249.68	6,710.57	412.68	-3,427.97	-409.09	9.00	2.16	-16.22
7,700.00	34.74	242.12	6,752.06	401.27	-3,453.40	-397.65	9.00	3.15	-15.11
7,750.00	36.74	235.22	6,792.66	386.07	-3,478.28	-382.43	9.00	4.00	-13.81
7,800.00	39.10	228.98	6,832.12	367.18	-3,502.47	-363.51	9.00	4.72	-12.47
7,850.00	41.76	223.38	6,870.19	344.72	-3,525.82	-341.03	9.00	5.32	-11.20
7,900.00	44.67	218.36	6,906.63	318.82	-3,548.17	-315.11	9.00	5.81	-10.04
7,950.00	47.77	213.84	6,941.23	289.65	-3,569.40	-285.91	9.00	6.21	-9.03
8,000.00	51.03	209.76	6,973.78	257.39	-3,589.37	-253.63	9.00	6.53	-8.16
8,050.00	54.43	206.05	7,004.06	222.22	-3,607.95	-218.45	9.00	6.79	-7.43
8,100.00	57.93	202.64	7,031.89	184.38	-3,625.04	-180.59	9.00	7.00	-6.82
8,150.00	61.51	199.48	7,057.10	144.10	-3,640.53	-140.28	9.00	7.16	-6.31
8,200.00	65.16	196.54	7,079.54	101.61	-3,654.33	-97.79	9.00	7.30	-5.89
8,250.00	68.86	193.76	7,099.07	57.19	-3,666.34	-53.35	9.00	7.41	-5.55
8,300.00	72.61	191.12	7,115.57	11.11	-3,676.49	-7.26	9.00	7.50	-5.28
8,350.00	76.39	188.59	7,128.93	-36.35	-3,684.72	40.21	9.00	7.56	-5.07
8,400.00	80.20	186.14	7,139.07	-84.89	-3,690.99	88.76	9.00	7.61	-4.91
8,450.00	84.02	183.74	7,145.93	-134.22	-3,695.25	138.09	9.00	7.65	-4.79
8,500.00	87.85	181.38	7,149.47	-184.04	-3,697.47	187.91	9.00	7.67	-4.73
8,527.95	90.00	180.06	7,150.00	-211.98	-3,697.82	215.85	9.00	7.67	-4.70
End Build/TPZ @ 8527.95ft									
8,600.00	90.00	180.06	7,150.00	-284.03	-3,697.90	287.90	0.00	0.00	0.00
8,700.00	90.00	180.06	7,150.00	-384.03	-3,698.01	387.90	0.00	0.00	0.00

Planning Report

Database:	EDM 5000.16 Single User Db	Local Co-ordinate Reference:	Well TIGER 0916-05H
Company:	VERDAD RESOURCES	TVD Reference:	RKB = 24' @ 5129.00usft (RIG)
Project:	WATTENBERG FIELD	MD Reference:	RKB = 24' @ 5129.00usft (RIG)
Site:	1N-64W-10 TIGER 0916 PAD	North Reference:	True
Well:	TIGER 0916-05H	Survey Calculation Method:	Minimum Curvature
Wellbore:	Wellbore #1		
Design:	Design #1		

Planned Survey										
Measured Depth (usft)	Inclination (°)	Azimuth (°)	Vertical Depth (usft)	+N/-S (usft)	+E/-W (usft)	Vertical Section (usft)	Dogleg Rate (°/100usft)	Build Rate (°/100usft)	Turn Rate (°/100usft)	
8,800.00	90.00	180.06	7,150.00	-484.03	-3,698.12	487.90	0.00	0.00	0.00	
8,900.00	90.00	180.06	7,150.00	-584.03	-3,698.22	587.90	0.00	0.00	0.00	
9,000.00	90.00	180.06	7,150.00	-684.03	-3,698.33	687.90	0.00	0.00	0.00	
9,100.00	90.00	180.06	7,150.00	-784.03	-3,698.44	787.90	0.00	0.00	0.00	
9,200.00	90.00	180.06	7,150.00	-884.03	-3,698.55	887.90	0.00	0.00	0.00	
9,300.00	90.00	180.06	7,150.00	-984.03	-3,698.66	987.90	0.00	0.00	0.00	
9,400.00	90.00	180.06	7,150.00	-1,084.03	-3,698.76	1,087.90	0.00	0.00	0.00	
9,500.00	90.00	180.06	7,150.00	-1,184.03	-3,698.87	1,187.90	0.00	0.00	0.00	
9,600.00	90.00	180.06	7,150.00	-1,284.03	-3,698.98	1,287.90	0.00	0.00	0.00	
9,700.00	90.00	180.06	7,150.00	-1,384.03	-3,699.09	1,387.90	0.00	0.00	0.00	
9,800.00	90.00	180.06	7,150.00	-1,484.03	-3,699.20	1,487.90	0.00	0.00	0.00	
9,900.00	90.00	180.06	7,150.00	-1,584.03	-3,699.30	1,587.90	0.00	0.00	0.00	
10,000.00	90.00	180.06	7,150.00	-1,684.03	-3,699.41	1,687.90	0.00	0.00	0.00	
10,100.00	90.00	180.06	7,150.00	-1,784.03	-3,699.52	1,787.90	0.00	0.00	0.00	
10,200.00	90.00	180.06	7,150.00	-1,884.03	-3,699.63	1,887.90	0.00	0.00	0.00	
10,300.00	90.00	180.06	7,150.00	-1,984.03	-3,699.74	1,987.90	0.00	0.00	0.00	
10,400.00	90.00	180.06	7,150.00	-2,084.03	-3,699.85	2,087.90	0.00	0.00	0.00	
10,500.00	90.00	180.06	7,150.00	-2,184.03	-3,699.95	2,187.90	0.00	0.00	0.00	
10,600.00	90.00	180.06	7,150.00	-2,284.03	-3,700.06	2,287.90	0.00	0.00	0.00	
10,700.00	90.00	180.06	7,150.00	-2,384.03	-3,700.17	2,387.90	0.00	0.00	0.00	
10,800.00	90.00	180.06	7,150.00	-2,484.03	-3,700.28	2,487.90	0.00	0.00	0.00	
10,900.00	90.00	180.06	7,150.00	-2,584.03	-3,700.39	2,587.90	0.00	0.00	0.00	
11,000.00	90.00	180.06	7,150.00	-2,684.03	-3,700.49	2,687.90	0.00	0.00	0.00	
11,100.00	90.00	180.06	7,150.00	-2,784.03	-3,700.60	2,787.90	0.00	0.00	0.00	
11,200.00	90.00	180.06	7,150.00	-2,884.03	-3,700.71	2,887.90	0.00	0.00	0.00	
11,300.00	90.00	180.06	7,150.00	-2,984.03	-3,700.82	2,987.90	0.00	0.00	0.00	
11,400.00	90.00	180.06	7,150.00	-3,084.03	-3,700.93	3,087.90	0.00	0.00	0.00	
11,500.00	90.00	180.06	7,150.00	-3,184.03	-3,701.03	3,187.90	0.00	0.00	0.00	
11,600.00	90.00	180.06	7,150.00	-3,284.03	-3,701.14	3,287.90	0.00	0.00	0.00	
11,700.00	90.00	180.06	7,150.00	-3,384.03	-3,701.25	3,387.90	0.00	0.00	0.00	
11,800.00	90.00	180.06	7,150.00	-3,484.03	-3,701.36	3,487.90	0.00	0.00	0.00	
11,900.00	90.00	180.06	7,150.00	-3,584.03	-3,701.47	3,587.90	0.00	0.00	0.00	
12,000.00	90.00	180.06	7,150.00	-3,684.03	-3,701.57	3,687.90	0.00	0.00	0.00	
12,100.00	90.00	180.06	7,150.00	-3,784.02	-3,701.68	3,787.90	0.00	0.00	0.00	
12,200.00	90.00	180.06	7,150.00	-3,884.02	-3,701.79	3,887.90	0.00	0.00	0.00	
12,300.00	90.00	180.06	7,150.00	-3,984.02	-3,701.90	3,987.90	0.00	0.00	0.00	
12,400.00	90.00	180.06	7,150.00	-4,084.02	-3,702.01	4,087.90	0.00	0.00	0.00	
12,500.00	90.00	180.06	7,150.00	-4,184.02	-3,702.11	4,187.90	0.00	0.00	0.00	
12,600.00	90.00	180.06	7,150.00	-4,284.02	-3,702.22	4,287.90	0.00	0.00	0.00	
12,700.00	90.00	180.06	7,150.00	-4,384.02	-3,702.33	4,387.90	0.00	0.00	0.00	
12,800.00	90.00	180.06	7,150.00	-4,484.02	-3,702.44	4,487.90	0.00	0.00	0.00	
12,900.00	90.00	180.06	7,150.00	-4,584.02	-3,702.55	4,587.90	0.00	0.00	0.00	
13,000.00	90.00	180.06	7,150.00	-4,684.02	-3,702.65	4,687.90	0.00	0.00	0.00	
13,100.00	90.00	180.06	7,150.00	-4,784.02	-3,702.76	4,787.90	0.00	0.00	0.00	
13,200.00	90.00	180.06	7,150.00	-4,884.02	-3,702.87	4,887.90	0.00	0.00	0.00	
13,300.00	90.00	180.06	7,150.00	-4,984.02	-3,702.98	4,987.90	0.00	0.00	0.00	
13,400.00	90.00	180.06	7,150.00	-5,084.02	-3,703.09	5,087.90	0.00	0.00	0.00	
13,500.00	90.00	180.06	7,150.00	-5,184.02	-3,703.19	5,187.90	0.00	0.00	0.00	
13,600.00	90.00	180.06	7,150.00	-5,284.02	-3,703.30	5,287.90	0.00	0.00	0.00	
13,700.00	90.00	180.06	7,150.00	-5,384.02	-3,703.41	5,387.90	0.00	0.00	0.00	
13,800.00	90.00	180.06	7,150.00	-5,484.02	-3,703.52	5,487.90	0.00	0.00	0.00	
13,900.00	90.00	180.06	7,150.00	-5,584.02	-3,703.63	5,587.90	0.00	0.00	0.00	
14,000.00	90.00	180.06	7,150.00	-5,684.02	-3,703.74	5,687.90	0.00	0.00	0.00	
14,100.00	90.00	180.06	7,150.00	-5,784.02	-3,703.84	5,787.90	0.00	0.00	0.00	

Planning Report

Database:	EDM 5000.16 Single User Db	Local Co-ordinate Reference:	Well TIGER 0916-05H
Company:	VERDAD RESOURCES	TVD Reference:	RKB = 24' @ 5129.00usft (RIG)
Project:	WATTENBERG FIELD	MD Reference:	RKB = 24' @ 5129.00usft (RIG)
Site:	1N-64W-10 TIGER 0916 PAD	North Reference:	True
Well:	TIGER 0916-05H	Survey Calculation Method:	Minimum Curvature
Wellbore:	Wellbore #1		
Design:	Design #1		

Planned Survey									
Measured Depth (usft)	Inclination (°)	Azimuth (°)	Vertical Depth (usft)	+N/-S (usft)	+E/-W (usft)	Vertical Section (usft)	Dogleg Rate (°/100usft)	Build Rate (°/100usft)	Turn Rate (°/100usft)
14,200.00	90.00	180.06	7,150.00	-5,884.02	-3,703.95	5,887.90	0.00	0.00	0.00
14,300.00	90.00	180.06	7,150.00	-5,984.02	-3,704.06	5,987.90	0.00	0.00	0.00
14,400.00	90.00	180.06	7,150.00	-6,084.02	-3,704.17	6,087.90	0.00	0.00	0.00
14,500.00	90.00	180.06	7,150.00	-6,184.02	-3,704.28	6,187.90	0.00	0.00	0.00
14,600.00	90.00	180.06	7,150.00	-6,284.02	-3,704.38	6,287.90	0.00	0.00	0.00
14,700.00	90.00	180.06	7,150.00	-6,384.02	-3,704.49	6,387.90	0.00	0.00	0.00
14,800.00	90.00	180.06	7,150.00	-6,484.02	-3,704.60	6,487.90	0.00	0.00	0.00
14,900.00	90.00	180.06	7,150.00	-6,584.02	-3,704.71	6,587.90	0.00	0.00	0.00
15,000.00	90.00	180.06	7,150.00	-6,684.02	-3,704.82	6,687.90	0.00	0.00	0.00
15,100.00	90.00	180.06	7,150.00	-6,784.02	-3,704.92	6,787.90	0.00	0.00	0.00
15,200.00	90.00	180.06	7,150.00	-6,884.02	-3,705.03	6,887.90	0.00	0.00	0.00
15,300.00	90.00	180.06	7,150.00	-6,984.02	-3,705.14	6,987.90	0.00	0.00	0.00
15,400.00	90.00	180.06	7,150.00	-7,084.02	-3,705.25	7,087.90	0.00	0.00	0.00
15,500.00	90.00	180.06	7,150.00	-7,184.02	-3,705.36	7,187.90	0.00	0.00	0.00
15,600.00	90.00	180.06	7,150.00	-7,284.02	-3,705.46	7,287.90	0.00	0.00	0.00
15,700.00	90.00	180.06	7,150.00	-7,384.02	-3,705.57	7,387.90	0.00	0.00	0.00
15,800.00	90.00	180.06	7,150.00	-7,484.02	-3,705.68	7,487.90	0.00	0.00	0.00
15,900.00	90.00	180.06	7,150.00	-7,584.02	-3,705.79	7,587.90	0.00	0.00	0.00
16,000.00	90.00	180.06	7,150.00	-7,684.02	-3,705.90	7,687.90	0.00	0.00	0.00
16,100.00	90.00	180.06	7,150.00	-7,784.02	-3,706.00	7,787.90	0.00	0.00	0.00
16,200.00	90.00	180.06	7,150.00	-7,884.02	-3,706.11	7,887.90	0.00	0.00	0.00
16,300.00	90.00	180.06	7,150.00	-7,984.02	-3,706.22	7,987.90	0.00	0.00	0.00
16,400.00	90.00	180.06	7,150.00	-8,084.02	-3,706.33	8,087.90	0.00	0.00	0.00
16,500.00	90.00	180.06	7,150.00	-8,184.02	-3,706.44	8,187.90	0.00	0.00	0.00
16,600.00	90.00	180.06	7,150.00	-8,284.02	-3,706.54	8,287.90	0.00	0.00	0.00
16,700.00	90.00	180.06	7,150.00	-8,384.02	-3,706.65	8,387.90	0.00	0.00	0.00
16,800.00	90.00	180.06	7,150.00	-8,484.02	-3,706.76	8,487.90	0.00	0.00	0.00
16,900.00	90.00	180.06	7,150.00	-8,584.02	-3,706.87	8,587.90	0.00	0.00	0.00
17,000.00	90.00	180.06	7,150.00	-8,684.02	-3,706.98	8,687.90	0.00	0.00	0.00
17,100.00	90.00	180.06	7,150.00	-8,784.02	-3,707.08	8,787.90	0.00	0.00	0.00
17,200.00	90.00	180.06	7,150.00	-8,884.02	-3,707.19	8,887.90	0.00	0.00	0.00
17,300.00	90.00	180.06	7,150.00	-8,984.02	-3,707.30	8,987.90	0.00	0.00	0.00
17,400.00	90.00	180.06	7,150.00	-9,084.02	-3,707.41	9,087.90	0.00	0.00	0.00
17,500.00	90.00	180.06	7,150.00	-9,184.02	-3,707.52	9,187.90	0.00	0.00	0.00
17,600.00	90.00	180.06	7,150.00	-9,284.02	-3,707.63	9,287.90	0.00	0.00	0.00
17,700.00	90.00	180.06	7,150.00	-9,384.02	-3,707.73	9,387.90	0.00	0.00	0.00
17,800.00	90.00	180.06	7,150.00	-9,484.02	-3,707.84	9,487.90	0.00	0.00	0.00
17,900.00	90.00	180.06	7,150.00	-9,584.02	-3,707.95	9,587.90	0.00	0.00	0.00
18,000.00	90.00	180.06	7,150.00	-9,684.02	-3,708.06	9,687.90	0.00	0.00	0.00
18,100.00	90.00	180.06	7,150.00	-9,784.02	-3,708.17	9,787.90	0.00	0.00	0.00
18,200.00	90.00	180.06	7,150.00	-9,884.02	-3,708.27	9,887.90	0.00	0.00	0.00
18,292.46	90.00	180.06	7,150.00	-9,976.48	-3,708.37	9,980.36	0.00	0.00	0.00
BPZ @ 18292.46ft									
18,300.00	90.00	180.06	7,150.00	-9,984.02	-3,708.38	9,987.90	0.00	0.00	0.00
18,382.44	90.00	180.06	7,150.00	-10,066.46	-3,708.47	10,070.33	0.00	0.00	0.00
TD Well @ 18382.44ft									

Planning Report

Database:	EDM 5000.16 Single User Db	Local Co-ordinate Reference:	Well TIGER 0916-05H
Company:	VERDAD RESOURCES	TVD Reference:	RKB = 24' @ 5129.00usft (RIG)
Project:	WATTENBERG FIELD	MD Reference:	RKB = 24' @ 5129.00usft (RIG)
Site:	1N-64W-10 TIGER 0916 PAD	North Reference:	True
Well:	TIGER 0916-05H	Survey Calculation Method:	Minimum Curvature
Wellbore:	Wellbore #1		
Design:	Design #1		

Casing Points					
Measured Depth (usft)	Vertical Depth (usft)	Name		Casing Diameter (")	Hole Diameter (")
2,470.88	2,304.00	9 5/8"		9-5/8	13-1/2

Plan Annotations					
Measured Depth (usft)	Vertical Depth (usft)	Local Coordinates		Comment	
		+N/-S (usft)	+E/-W (usft)		
300.75	300.75	0.00	0.00	Begin Nudge @ 300.75ft	
1,885.25	1,805.69	53.61	-423.75	Hold Tangent @ 1885.25ft	
7,486.31	6,571.65	422.89	-3,342.86	KOP @ 7486.31ft :: DLS = 9°/100'	
8,527.95	7,150.00	-211.98	-3,697.82	End Build/TPZ @ 8527.95ft	
18,292.46	7,150.00	-9,976.48	-3,708.37	BPZ @ 18292.46ft	
18,382.44	7,150.00	-10,066.46	-3,708.47	TD Well @ 18382.44ft	