

VERDAD RESOURCES

WATTENBERG FIELD

1N-64W-10 TIGER 0916 PAD

TIGER 0916-08H

Wellbore #1

Plan: Design #1

Standard Planning Report

27 December, 2022

Project: WATTENBERG FIELD
Site: 1N-64W-10 TIGER 0916 PAD
Well: TIGER 0916-08H
Wellbore: Wellbore #1
Design: Design #1

VERDAD RESOURCES

CASING DETAILS

TVD	MD	Name	Size
2304.00	2367.10	9 5/8"	9-5/8

SHL
245' FNL
1419' FWL

LP/TPZ
460' FNL
480' FEL

BPZ
460' FSL
480' FEL

BHL
370' FSL
480' FEL

SECTION DETAILS

MD	Inc	Azi	TVD	+N/-S	+E/-W	Dleg	TFace	VSect	Target
0.00	0.00	0.00	0.00	0.00	0.00	0.00	0.00	0.00	
370.05	0.00	0.00	370.05	0.00	0.00	0.00	0.00	0.00	
1225.05	17.10	275.60	1212.41	12.36	-126.04	2.00	275.60	-12.23	
1357.68	17.10	284.63	1339.21	19.19	-164.32	2.00	94.32	-19.02	
6751.66	17.10	284.63	6494.73	419.78	-1698.94	0.00	0.00	-418.01	
7798.78	90.00	180.06	7150.00	-214.87	-1894.76	9.00	-103.95	216.86	
17674.96	90.00	180.06	7150.00	-10091.04	-1905.75	0.00	0.00	10093.03	TIGER 0916-08H_BHL

WELLBORE TARGET DETAILS

Name	TVD	Northing	Easting	Latitude	Longitude
TIGER 0916-08H_SHL	0.00	1270723.81	3268293.15	40.072546	-104.541297
TIGER 0916-08H_LP/TPZ	7150.00	1270488.55	3266400.95	40.071956	-104.548067
TIGER 0916-08H_BPZ	7150.00	1260702.75	3266497.60	40.045091	-104.548097
TIGER 0916-08H_BHL	7150.00	1260612.76	3266496.61	40.044844	-104.548104

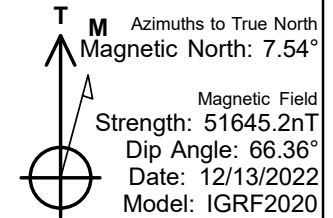
WELL DETAILS: TIGER 0916-08H

GL = 5105'

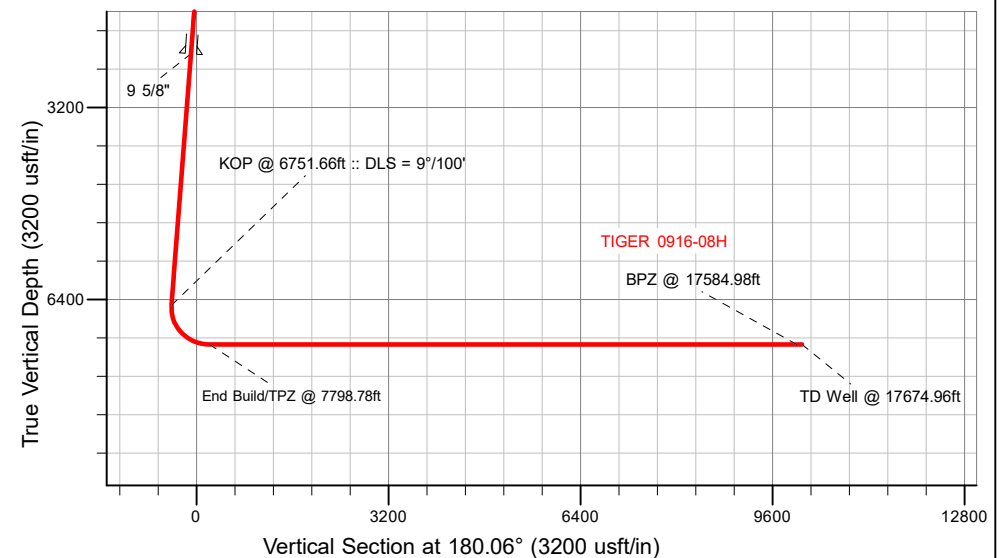
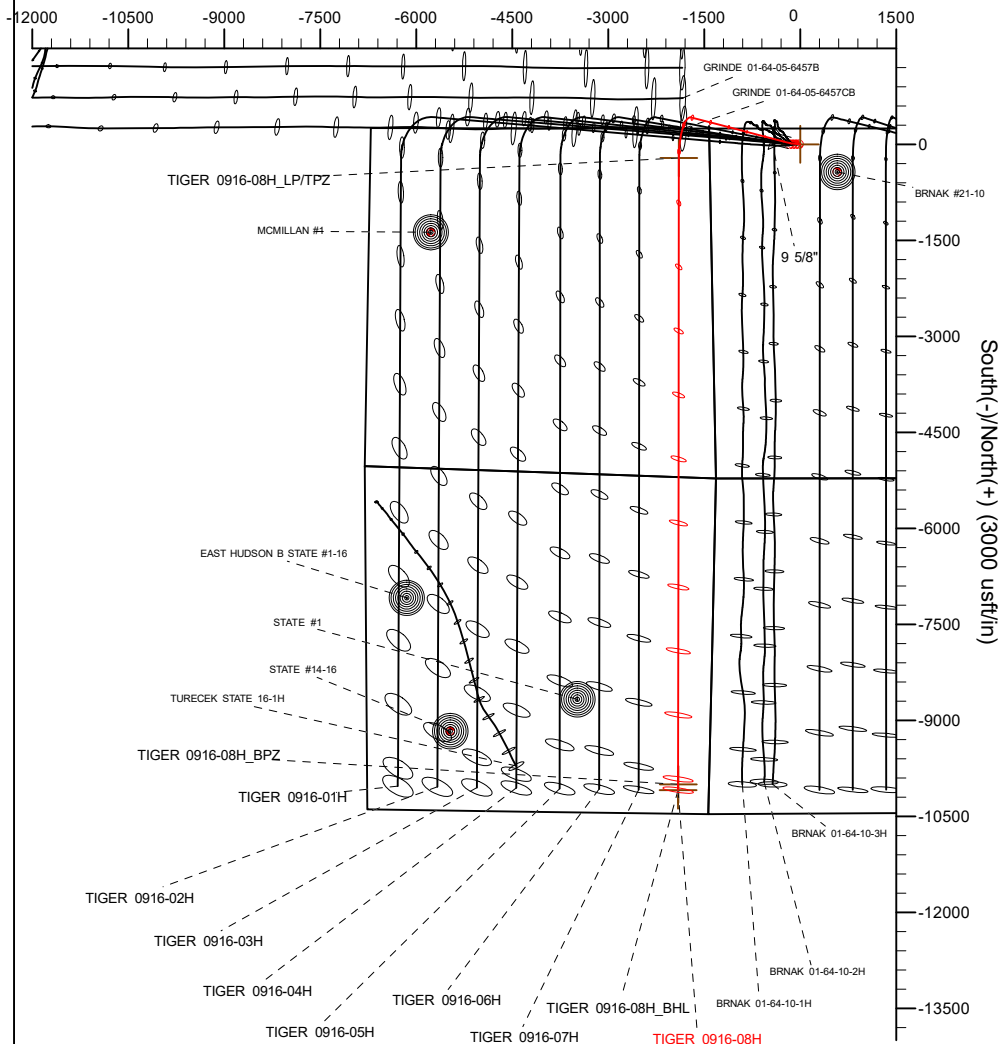
RKB = 24' @ 5129.00usft (RIG)

Plan: Design #1 (TIGER 0916-08H/Wellbore #1)

Date: 12/27/2022



West(-)/East(+) (3000 usft/in)



Planning Report

Database:	EDM 5000.16 Single User Db	Local Co-ordinate Reference:	Well TIGER 0916-08H
Company:	VERDAD RESOURCES	TVD Reference:	RKB = 24' @ 5129.00usft (RIG)
Project:	WATTENBERG FIELD	MD Reference:	RKB = 24' @ 5129.00usft (RIG)
Site:	1N-64W-10 TIGER 0916 PAD	North Reference:	True
Well:	TIGER 0916-08H	Survey Calculation Method:	Minimum Curvature
Wellbore:	Wellbore #1		
Design:	Design #1		

Project	WATTENBERG FIELD		
Map System:	US State Plane 1983	System Datum:	Mean Sea Level
Geo Datum:	North American Datum 1983		
Map Zone:	Colorado Northern Zone		

Site	1N-64W-10 TIGER 0916 PAD			
Site Position:		Northing:	1,270,722.66 usft	Latitude: 40.072546
From:	Lat/Long	Easting:	3,268,181.22 usft	Longitude: -104.541697
Position Uncertainty:	0.00 usft	Slot Radius:	13-3/16 "	

Well	TIGER 0916-08H			
Well Position	+N/-S	0.00 usft	Northing:	1,270,723.81 usft
	+E/-W	0.00 usft	Easting:	3,268,293.15 usft
Position Uncertainty		3.28 usft	Wellhead Elevation:	usft
Grid Convergence:		0.62 °	Ground Level:	5,105.00 usft

Wellbore	Wellbore #1				
Magnetics	Model Name	Sample Date	Declination (°)	Dip Angle (°)	Field Strength (nT)
	IGRF202013	12/13/2022	7.54	66.36	51,645.23715210

Design	Design #1				
Audit Notes:					
Version:		Phase:	PLAN	Tie On Depth:	0.00
Vertical Section:	Depth From (TVD) (usft)	+N/-S (usft)	+E/-W (usft)	Direction (°)	
	0.00	0.00	0.00	180.06	

Plan Survey Tool Program	Date	12/27/2022			
Depth From (usft)	Depth To (usft)	Survey (Wellbore)	Tool Name	Remarks	
1	0.00	2,367.10	Design #1 (Wellbore #1)	ISCWSA MWD	
				Fixed:v2:standard declination	
2	2,367.10	17,674.96	Design #1 (Wellbore #1)	ISCWSA MWD	
				Fixed:v2:standard declination	

Planning Report

Database:	EDM 5000.16 Single User Db	Local Co-ordinate Reference:	Well TIGER 0916-08H
Company:	VERDAD RESOURCES	TVD Reference:	RKB = 24' @ 5129.00usft (RIG)
Project:	WATTENBERG FIELD	MD Reference:	RKB = 24' @ 5129.00usft (RIG)
Site:	1N-64W-10 TIGER 0916 PAD	North Reference:	True
Well:	TIGER 0916-08H	Survey Calculation Method:	Minimum Curvature
Wellbore:	Wellbore #1		
Design:	Design #1		

Plan Sections										
Measured Depth (usft)	Inclination (°)	Azimuth (°)	Vertical Depth (usft)	+N/-S (usft)	+E/-W (usft)	Dogleg Rate (°/100usft)	Build Rate (°/100usft)	Turn Rate (°/100usft)	TFO (°)	Target
0.00	0.00	0.00	0.00	0.00	0.00	0.00	0.00	0.00	0.00	
370.05	0.00	0.00	370.05	0.00	0.00	0.00	0.00	0.00	0.00	
1,225.05	17.10	275.60	1,212.41	12.36	-126.04	2.00	2.00	0.00	275.60	
1,357.68	17.10	284.63	1,339.21	19.19	-164.32	2.00	0.00	6.81	94.32	
6,751.66	17.10	284.63	6,494.73	419.78	-1,698.94	0.00	0.00	0.00	0.00	
7,798.78	90.00	180.06	7,150.00	-214.87	-1,894.76	9.00	6.96	-9.99	-103.95	
17,674.96	90.00	180.06	7,150.00	-10,091.04	-1,905.75	0.00	0.00	0.00	0.00	TIGER 0916-08H_BH

Planning Report

Database:	EDM 5000.16 Single User Db	Local Co-ordinate Reference:	Well TIGER 0916-08H
Company:	VERDAD RESOURCES	TVD Reference:	RKB = 24' @ 5129.00usft (RIG)
Project:	WATTENBERG FIELD	MD Reference:	RKB = 24' @ 5129.00usft (RIG)
Site:	1N-64W-10 TIGER 0916 PAD	North Reference:	True
Well:	TIGER 0916-08H	Survey Calculation Method:	Minimum Curvature
Wellbore:	Wellbore #1		
Design:	Design #1		

Planned Survey									
Measured Depth (usft)	Inclination (°)	Azimuth (°)	Vertical Depth (usft)	+N/-S (usft)	+E/-W (usft)	Vertical Section (usft)	Dogleg Rate (°/100usft)	Build Rate (°/100usft)	Turn Rate (°/100usft)
0.00	0.00	0.00	0.00	0.00	0.00	0.00	0.00	0.00	0.00
100.00	0.00	0.00	100.00	0.00	0.00	0.00	0.00	0.00	0.00
200.00	0.00	0.00	200.00	0.00	0.00	0.00	0.00	0.00	0.00
300.00	0.00	0.00	300.00	0.00	0.00	0.00	0.00	0.00	0.00
370.05	0.00	0.00	370.05	0.00	0.00	0.00	0.00	0.00	0.00
Begin Nudge @ 370.05ft									
400.00	0.60	275.60	400.00	0.02	-0.16	-0.02	2.00	2.00	0.00
500.00	2.60	275.60	499.96	0.29	-2.93	-0.28	2.00	2.00	0.00
600.00	4.60	275.60	599.75	0.90	-9.18	-0.89	2.00	2.00	0.00
700.00	6.60	275.60	699.27	1.85	-18.89	-1.83	2.00	2.00	0.00
800.00	8.60	275.60	798.39	3.14	-32.05	-3.11	2.00	2.00	0.00
900.00	10.60	275.60	896.98	4.77	-48.64	-4.72	2.00	2.00	0.00
1,000.00	12.60	275.60	994.94	6.73	-68.65	-6.66	2.00	2.00	0.00
1,100.00	14.60	275.60	1,092.13	9.03	-92.05	-8.93	2.00	2.00	0.00
1,200.00	16.60	275.60	1,188.44	11.65	-118.81	-11.53	2.00	2.00	0.00
1,225.05	17.10	275.60	1,212.41	12.36	-126.04	-12.23	2.00	2.00	0.00
Change Tangent Direction @ 1225.05ft									
1,300.00	17.05	280.70	1,284.06	15.47	-147.80	-15.32	2.00	-0.07	6.81
1,357.68	17.10	284.63	1,339.21	19.19	-164.32	-19.02	2.00	0.09	6.81
Hold Tangent @ 1357.68ft									
1,400.00	17.10	284.63	1,379.65	22.33	-176.36	-22.15	0.00	0.00	0.00
1,500.00	17.10	284.63	1,475.23	29.76	-204.81	-29.54	0.00	0.00	0.00
1,600.00	17.10	284.63	1,570.81	37.18	-233.26	-36.94	0.00	0.00	0.00
1,700.00	17.10	284.63	1,666.39	44.61	-261.71	-44.34	0.00	0.00	0.00
1,800.00	17.10	284.63	1,761.97	52.04	-290.16	-51.73	0.00	0.00	0.00
1,900.00	17.10	284.63	1,857.55	59.46	-318.61	-59.13	0.00	0.00	0.00
2,000.00	17.10	284.63	1,953.13	66.89	-347.06	-66.53	0.00	0.00	0.00
2,100.00	17.10	284.63	2,048.71	74.32	-375.51	-73.92	0.00	0.00	0.00
2,200.00	17.10	284.63	2,144.29	81.74	-403.97	-81.32	0.00	0.00	0.00
2,300.00	17.10	284.63	2,239.87	89.17	-432.42	-88.72	0.00	0.00	0.00
2,367.10	17.10	284.63	2,304.00	94.15	-451.51	-93.68	0.00	0.00	0.00
9 5/8"									
2,400.00	17.10	284.63	2,335.45	96.60	-460.87	-96.12	0.00	0.00	0.00
2,500.00	17.10	284.63	2,431.02	104.02	-489.32	-103.51	0.00	0.00	0.00
2,600.00	17.10	284.63	2,526.60	111.45	-517.77	-110.91	0.00	0.00	0.00
2,700.00	17.10	284.63	2,622.18	118.88	-546.22	-118.31	0.00	0.00	0.00
2,800.00	17.10	284.63	2,717.76	126.30	-574.67	-125.70	0.00	0.00	0.00
2,900.00	17.10	284.63	2,813.34	133.73	-603.12	-133.10	0.00	0.00	0.00
3,000.00	17.10	284.63	2,908.92	141.16	-631.57	-140.50	0.00	0.00	0.00
3,100.00	17.10	284.63	3,004.50	148.59	-660.02	-147.89	0.00	0.00	0.00
3,200.00	17.10	284.63	3,100.08	156.01	-688.47	-155.29	0.00	0.00	0.00
3,300.00	17.10	284.63	3,195.66	163.44	-716.92	-162.69	0.00	0.00	0.00
3,400.00	17.10	284.63	3,291.24	170.87	-745.37	-170.08	0.00	0.00	0.00
3,500.00	17.10	284.63	3,386.82	178.29	-773.82	-177.48	0.00	0.00	0.00
3,600.00	17.10	284.63	3,482.40	185.72	-802.27	-184.88	0.00	0.00	0.00
3,700.00	17.10	284.63	3,577.98	193.15	-830.73	-192.28	0.00	0.00	0.00
3,800.00	17.10	284.63	3,673.56	200.57	-859.18	-199.67	0.00	0.00	0.00
3,900.00	17.10	284.63	3,769.13	208.00	-887.63	-207.07	0.00	0.00	0.00
4,000.00	17.10	284.63	3,864.71	215.43	-916.08	-214.47	0.00	0.00	0.00
4,100.00	17.10	284.63	3,960.29	222.85	-944.53	-221.86	0.00	0.00	0.00
4,200.00	17.10	284.63	4,055.87	230.28	-972.98	-229.26	0.00	0.00	0.00
4,300.00	17.10	284.63	4,151.45	237.71	-1,001.43	-236.66	0.00	0.00	0.00
4,400.00	17.10	284.63	4,247.03	245.13	-1,029.88	-244.05	0.00	0.00	0.00
4,500.00	17.10	284.63	4,342.61	252.56	-1,058.33	-251.45	0.00	0.00	0.00

Planning Report

Database:	EDM 5000.16 Single User Db	Local Co-ordinate Reference:	Well TIGER 0916-08H
Company:	VERDAD RESOURCES	TVD Reference:	RKB = 24' @ 5129.00usft (RIG)
Project:	WATTENBERG FIELD	MD Reference:	RKB = 24' @ 5129.00usft (RIG)
Site:	1N-64W-10 TIGER 0916 PAD	North Reference:	True
Well:	TIGER 0916-08H	Survey Calculation Method:	Minimum Curvature
Wellbore:	Wellbore #1		
Design:	Design #1		

Planned Survey									
Measured Depth (usft)	Inclination (°)	Azimuth (°)	Vertical Depth (usft)	+N/-S (usft)	+E/-W (usft)	Vertical Section (usft)	Dogleg Rate (°/100usft)	Build Rate (°/100usft)	Turn Rate (°/100usft)
4,600.00	17.10	284.63	4,438.19	259.99	-1,086.78	-258.85	0.00	0.00	0.00
4,700.00	17.10	284.63	4,533.77	267.41	-1,115.23	-266.25	0.00	0.00	0.00
4,800.00	17.10	284.63	4,629.35	274.84	-1,143.68	-273.64	0.00	0.00	0.00
4,900.00	17.10	284.63	4,724.93	282.27	-1,172.13	-281.04	0.00	0.00	0.00
5,000.00	17.10	284.63	4,820.51	289.69	-1,200.58	-288.44	0.00	0.00	0.00
5,100.00	17.10	284.63	4,916.09	297.12	-1,229.03	-295.83	0.00	0.00	0.00
5,200.00	17.10	284.63	5,011.67	304.55	-1,257.49	-303.23	0.00	0.00	0.00
5,300.00	17.10	284.63	5,107.24	311.97	-1,285.94	-310.63	0.00	0.00	0.00
5,400.00	17.10	284.63	5,202.82	319.40	-1,314.39	-318.02	0.00	0.00	0.00
5,500.00	17.10	284.63	5,298.40	326.83	-1,342.84	-325.42	0.00	0.00	0.00
5,600.00	17.10	284.63	5,393.98	334.25	-1,371.29	-332.82	0.00	0.00	0.00
5,700.00	17.10	284.63	5,489.56	341.68	-1,399.74	-340.21	0.00	0.00	0.00
5,800.00	17.10	284.63	5,585.14	349.11	-1,428.19	-347.61	0.00	0.00	0.00
5,900.00	17.10	284.63	5,680.72	356.53	-1,456.64	-355.01	0.00	0.00	0.00
6,000.00	17.10	284.63	5,776.30	363.96	-1,485.09	-362.41	0.00	0.00	0.00
6,100.00	17.10	284.63	5,871.88	371.39	-1,513.54	-369.80	0.00	0.00	0.00
6,200.00	17.10	284.63	5,967.46	378.81	-1,541.99	-377.20	0.00	0.00	0.00
6,300.00	17.10	284.63	6,063.04	386.24	-1,570.44	-384.60	0.00	0.00	0.00
6,400.00	17.10	284.63	6,158.62	393.67	-1,598.89	-391.99	0.00	0.00	0.00
6,500.00	17.10	284.63	6,254.20	401.09	-1,627.34	-399.39	0.00	0.00	0.00
6,600.00	17.10	284.63	6,349.78	408.52	-1,655.79	-406.79	0.00	0.00	0.00
6,700.00	17.10	284.63	6,445.36	415.95	-1,684.25	-414.18	0.00	0.00	0.00
6,751.66	17.10	284.63	6,494.73	419.78	-1,698.94	-418.01	0.00	0.00	0.00
KOP @ 6751.66ft :: DLS = 9°/100'									
6,800.00	16.58	269.68	6,541.02	421.54	-1,712.72	-419.75	9.00	-1.07	-30.93
6,850.00	17.19	254.29	6,588.89	419.50	-1,726.98	-417.69	9.00	1.22	-30.79
6,900.00	18.86	240.73	6,636.45	413.55	-1,741.15	-411.72	9.00	3.33	-27.11
6,950.00	21.33	229.75	6,683.42	403.72	-1,755.14	-401.88	9.00	4.94	-21.96
7,000.00	24.36	221.17	6,729.51	390.07	-1,768.88	-388.22	9.00	6.07	-17.16
7,050.00	27.78	214.48	6,774.42	372.69	-1,782.27	-370.83	9.00	6.83	-13.38
7,100.00	31.45	209.20	6,817.89	351.69	-1,795.24	-349.81	9.00	7.34	-10.57
7,150.00	35.29	204.94	6,859.65	327.20	-1,807.70	-325.31	9.00	7.69	-8.52
7,200.00	39.26	201.43	6,899.43	299.36	-1,819.58	-297.46	9.00	7.93	-7.02
7,250.00	43.31	198.47	6,937.00	268.35	-1,830.80	-266.43	9.00	8.11	-5.91
7,300.00	47.44	195.93	6,972.12	234.36	-1,841.29	-232.43	9.00	8.24	-5.08
7,350.00	51.61	193.71	7,004.57	197.60	-1,851.00	-195.66	9.00	8.34	-4.45
7,400.00	55.82	191.73	7,034.16	158.30	-1,859.85	-156.35	9.00	8.42	-3.96
7,450.00	60.05	189.94	7,060.70	116.69	-1,867.80	-114.73	9.00	8.47	-3.58
7,500.00	64.31	188.30	7,084.03	73.04	-1,874.79	-71.07	9.00	8.52	-3.29
7,550.00	68.59	186.77	7,104.00	27.61	-1,880.79	-25.64	9.00	8.55	-3.06
7,600.00	72.88	185.33	7,120.50	-19.32	-1,885.75	21.29	9.00	8.58	-2.88
7,650.00	77.18	183.95	7,133.41	-67.45	-1,889.65	69.43	9.00	8.60	-2.75
7,700.00	81.48	182.62	7,142.67	-116.49	-1,892.46	118.47	9.00	8.61	-2.66
7,750.00	85.79	181.32	7,148.21	-166.14	-1,894.17	168.12	9.00	8.62	-2.60
7,798.78	90.00	180.06	7,150.00	-214.87	-1,894.76	216.86	9.00	8.63	-2.57
End Build/TPZ @ 7798.78ft									
7,800.00	90.00	180.06	7,150.00	-216.09	-1,894.76	218.08	0.00	0.00	0.00
7,900.00	90.00	180.06	7,150.00	-316.09	-1,894.87	318.08	0.00	0.00	0.00
8,000.00	90.00	180.06	7,150.00	-416.09	-1,894.98	418.08	0.00	0.00	0.00
8,100.00	90.00	180.06	7,150.00	-516.09	-1,895.09	518.08	0.00	0.00	0.00
8,200.00	90.00	180.06	7,150.00	-616.09	-1,895.20	618.08	0.00	0.00	0.00
8,300.00	90.00	180.06	7,150.00	-716.09	-1,895.31	718.08	0.00	0.00	0.00
8,400.00	90.00	180.06	7,150.00	-816.09	-1,895.43	818.08	0.00	0.00	0.00

Planning Report

Database:	EDM 5000.16 Single User Db	Local Co-ordinate Reference:	Well TIGER 0916-08H
Company:	VERDAD RESOURCES	TVD Reference:	RKB = 24' @ 5129.00usft (RIG)
Project:	WATTENBERG FIELD	MD Reference:	RKB = 24' @ 5129.00usft (RIG)
Site:	1N-64W-10 TIGER 0916 PAD	North Reference:	True
Well:	TIGER 0916-08H	Survey Calculation Method:	Minimum Curvature
Wellbore:	Wellbore #1		
Design:	Design #1		

Planned Survey										
Measured Depth (usft)	Inclination (°)	Azimuth (°)	Vertical Depth (usft)	+N/-S (usft)	+E/-W (usft)	Vertical Section (usft)	Dogleg Rate (°/100usft)	Build Rate (°/100usft)	Turn Rate (°/100usft)	
8,500.00	90.00	180.06	7,150.00	-916.09	-1,895.54	918.08	0.00	0.00	0.00	
8,600.00	90.00	180.06	7,150.00	-1,016.09	-1,895.65	1,018.08	0.00	0.00	0.00	
8,700.00	90.00	180.06	7,150.00	-1,116.09	-1,895.76	1,118.08	0.00	0.00	0.00	
8,800.00	90.00	180.06	7,150.00	-1,216.09	-1,895.87	1,218.08	0.00	0.00	0.00	
8,900.00	90.00	180.06	7,150.00	-1,316.09	-1,895.98	1,318.08	0.00	0.00	0.00	
9,000.00	90.00	180.06	7,150.00	-1,416.09	-1,896.09	1,418.08	0.00	0.00	0.00	
9,100.00	90.00	180.06	7,150.00	-1,516.09	-1,896.21	1,518.08	0.00	0.00	0.00	
9,200.00	90.00	180.06	7,150.00	-1,616.09	-1,896.32	1,618.08	0.00	0.00	0.00	
9,300.00	90.00	180.06	7,150.00	-1,716.09	-1,896.43	1,718.08	0.00	0.00	0.00	
9,400.00	90.00	180.06	7,150.00	-1,816.09	-1,896.54	1,818.08	0.00	0.00	0.00	
9,500.00	90.00	180.06	7,150.00	-1,916.09	-1,896.65	1,918.08	0.00	0.00	0.00	
9,600.00	90.00	180.06	7,150.00	-2,016.09	-1,896.76	2,018.08	0.00	0.00	0.00	
9,700.00	90.00	180.06	7,150.00	-2,116.09	-1,896.87	2,118.08	0.00	0.00	0.00	
9,800.00	90.00	180.06	7,150.00	-2,216.09	-1,896.98	2,218.08	0.00	0.00	0.00	
9,900.00	90.00	180.06	7,150.00	-2,316.09	-1,897.10	2,318.08	0.00	0.00	0.00	
10,000.00	90.00	180.06	7,150.00	-2,416.09	-1,897.21	2,418.08	0.00	0.00	0.00	
10,100.00	90.00	180.06	7,150.00	-2,516.09	-1,897.32	2,518.08	0.00	0.00	0.00	
10,200.00	90.00	180.06	7,150.00	-2,616.09	-1,897.43	2,618.08	0.00	0.00	0.00	
10,300.00	90.00	180.06	7,150.00	-2,716.09	-1,897.54	2,718.08	0.00	0.00	0.00	
10,400.00	90.00	180.06	7,150.00	-2,816.09	-1,897.65	2,818.08	0.00	0.00	0.00	
10,500.00	90.00	180.06	7,150.00	-2,916.09	-1,897.76	2,918.08	0.00	0.00	0.00	
10,600.00	90.00	180.06	7,150.00	-3,016.09	-1,897.88	3,018.08	0.00	0.00	0.00	
10,700.00	90.00	180.06	7,150.00	-3,116.09	-1,897.99	3,118.08	0.00	0.00	0.00	
10,800.00	90.00	180.06	7,150.00	-3,216.09	-1,898.10	3,218.08	0.00	0.00	0.00	
10,900.00	90.00	180.06	7,150.00	-3,316.09	-1,898.21	3,318.08	0.00	0.00	0.00	
11,000.00	90.00	180.06	7,150.00	-3,416.09	-1,898.32	3,418.08	0.00	0.00	0.00	
11,100.00	90.00	180.06	7,150.00	-3,516.09	-1,898.43	3,518.08	0.00	0.00	0.00	
11,200.00	90.00	180.06	7,150.00	-3,616.09	-1,898.54	3,618.08	0.00	0.00	0.00	
11,300.00	90.00	180.06	7,150.00	-3,716.09	-1,898.65	3,718.08	0.00	0.00	0.00	
11,400.00	90.00	180.06	7,150.00	-3,816.09	-1,898.77	3,818.08	0.00	0.00	0.00	
11,500.00	90.00	180.06	7,150.00	-3,916.09	-1,898.88	3,918.08	0.00	0.00	0.00	
11,600.00	90.00	180.06	7,150.00	-4,016.09	-1,898.99	4,018.08	0.00	0.00	0.00	
11,700.00	90.00	180.06	7,150.00	-4,116.09	-1,899.10	4,118.08	0.00	0.00	0.00	
11,800.00	90.00	180.06	7,150.00	-4,216.09	-1,899.21	4,218.08	0.00	0.00	0.00	
11,900.00	90.00	180.06	7,150.00	-4,316.09	-1,899.32	4,318.08	0.00	0.00	0.00	
12,000.00	90.00	180.06	7,150.00	-4,416.09	-1,899.43	4,418.08	0.00	0.00	0.00	
12,100.00	90.00	180.06	7,150.00	-4,516.09	-1,899.55	4,518.08	0.00	0.00	0.00	
12,200.00	90.00	180.06	7,150.00	-4,616.09	-1,899.66	4,618.08	0.00	0.00	0.00	
12,300.00	90.00	180.06	7,150.00	-4,716.09	-1,899.77	4,718.08	0.00	0.00	0.00	
12,400.00	90.00	180.06	7,150.00	-4,816.09	-1,899.88	4,818.08	0.00	0.00	0.00	
12,500.00	90.00	180.06	7,150.00	-4,916.09	-1,899.99	4,918.08	0.00	0.00	0.00	
12,600.00	90.00	180.06	7,150.00	-5,016.09	-1,900.10	5,018.08	0.00	0.00	0.00	
12,700.00	90.00	180.06	7,150.00	-5,116.09	-1,900.21	5,118.08	0.00	0.00	0.00	
12,800.00	90.00	180.06	7,150.00	-5,216.09	-1,900.32	5,218.08	0.00	0.00	0.00	
12,900.00	90.00	180.06	7,150.00	-5,316.09	-1,900.44	5,318.08	0.00	0.00	0.00	
13,000.00	90.00	180.06	7,150.00	-5,416.09	-1,900.55	5,418.08	0.00	0.00	0.00	
13,100.00	90.00	180.06	7,150.00	-5,516.09	-1,900.66	5,518.08	0.00	0.00	0.00	
13,200.00	90.00	180.06	7,150.00	-5,616.09	-1,900.77	5,618.08	0.00	0.00	0.00	
13,300.00	90.00	180.06	7,150.00	-5,716.09	-1,900.88	5,718.08	0.00	0.00	0.00	
13,400.00	90.00	180.06	7,150.00	-5,816.09	-1,900.99	5,818.08	0.00	0.00	0.00	
13,500.00	90.00	180.06	7,150.00	-5,916.09	-1,901.10	5,918.08	0.00	0.00	0.00	
13,600.00	90.00	180.06	7,150.00	-6,016.09	-1,901.22	6,018.08	0.00	0.00	0.00	
13,700.00	90.00	180.06	7,150.00	-6,116.09	-1,901.33	6,118.08	0.00	0.00	0.00	
13,800.00	90.00	180.06	7,150.00	-6,216.09	-1,901.44	6,218.08	0.00	0.00	0.00	

Planning Report

Database:	EDM 5000.16 Single User Db	Local Co-ordinate Reference:	Well TIGER 0916-08H
Company:	VERDAD RESOURCES	TVD Reference:	RKB = 24' @ 5129.00usft (RIG)
Project:	WATTENBERG FIELD	MD Reference:	RKB = 24' @ 5129.00usft (RIG)
Site:	1N-64W-10 TIGER 0916 PAD	North Reference:	True
Well:	TIGER 0916-08H	Survey Calculation Method:	Minimum Curvature
Wellbore:	Wellbore #1		
Design:	Design #1		

Planned Survey										
Measured Depth (usft)	Inclination (°)	Azimuth (°)	Vertical Depth (usft)	+N/-S (usft)	+E/-W (usft)	Vertical Section (usft)	Dogleg Rate (°/100usft)	Build Rate (°/100usft)	Turn Rate (°/100usft)	
13,900.00	90.00	180.06	7,150.00	-6,316.09	-1,901.55	6,318.08	0.00	0.00	0.00	
14,000.00	90.00	180.06	7,150.00	-6,416.09	-1,901.66	6,418.08	0.00	0.00	0.00	
14,100.00	90.00	180.06	7,150.00	-6,516.09	-1,901.77	6,518.08	0.00	0.00	0.00	
14,200.00	90.00	180.06	7,150.00	-6,616.09	-1,901.88	6,618.08	0.00	0.00	0.00	
14,300.00	90.00	180.06	7,150.00	-6,716.09	-1,901.99	6,718.08	0.00	0.00	0.00	
14,400.00	90.00	180.06	7,150.00	-6,816.09	-1,902.11	6,818.08	0.00	0.00	0.00	
14,500.00	90.00	180.06	7,150.00	-6,916.09	-1,902.22	6,918.08	0.00	0.00	0.00	
14,600.00	90.00	180.06	7,150.00	-7,016.09	-1,902.33	7,018.08	0.00	0.00	0.00	
14,700.00	90.00	180.06	7,150.00	-7,116.09	-1,902.44	7,118.08	0.00	0.00	0.00	
14,800.00	90.00	180.06	7,150.00	-7,216.09	-1,902.55	7,218.08	0.00	0.00	0.00	
14,900.00	90.00	180.06	7,150.00	-7,316.09	-1,902.66	7,318.08	0.00	0.00	0.00	
15,000.00	90.00	180.06	7,150.00	-7,416.09	-1,902.77	7,418.08	0.00	0.00	0.00	
15,100.00	90.00	180.06	7,150.00	-7,516.09	-1,902.88	7,518.08	0.00	0.00	0.00	
15,200.00	90.00	180.06	7,150.00	-7,616.09	-1,903.00	7,618.08	0.00	0.00	0.00	
15,300.00	90.00	180.06	7,150.00	-7,716.09	-1,903.11	7,718.08	0.00	0.00	0.00	
15,400.00	90.00	180.06	7,150.00	-7,816.09	-1,903.22	7,818.08	0.00	0.00	0.00	
15,500.00	90.00	180.06	7,150.00	-7,916.09	-1,903.33	7,918.08	0.00	0.00	0.00	
15,600.00	90.00	180.06	7,150.00	-8,016.09	-1,903.44	8,018.08	0.00	0.00	0.00	
15,700.00	90.00	180.06	7,150.00	-8,116.09	-1,903.55	8,118.08	0.00	0.00	0.00	
15,800.00	90.00	180.06	7,150.00	-8,216.09	-1,903.66	8,218.08	0.00	0.00	0.00	
15,900.00	90.00	180.06	7,150.00	-8,316.09	-1,903.78	8,318.08	0.00	0.00	0.00	
16,000.00	90.00	180.06	7,150.00	-8,416.09	-1,903.89	8,418.08	0.00	0.00	0.00	
16,100.00	90.00	180.06	7,150.00	-8,516.09	-1,904.00	8,518.08	0.00	0.00	0.00	
16,200.00	90.00	180.06	7,150.00	-8,616.09	-1,904.11	8,618.08	0.00	0.00	0.00	
16,300.00	90.00	180.06	7,150.00	-8,716.09	-1,904.22	8,718.08	0.00	0.00	0.00	
16,400.00	90.00	180.06	7,150.00	-8,816.09	-1,904.33	8,818.08	0.00	0.00	0.00	
16,500.00	90.00	180.06	7,150.00	-8,916.09	-1,904.44	8,918.08	0.00	0.00	0.00	
16,600.00	90.00	180.06	7,150.00	-9,016.09	-1,904.55	9,018.08	0.00	0.00	0.00	
16,700.00	90.00	180.06	7,150.00	-9,116.09	-1,904.67	9,118.08	0.00	0.00	0.00	
16,800.00	90.00	180.06	7,150.00	-9,216.09	-1,904.78	9,218.08	0.00	0.00	0.00	
16,900.00	90.00	180.06	7,150.00	-9,316.09	-1,904.89	9,318.08	0.00	0.00	0.00	
17,000.00	90.00	180.06	7,150.00	-9,416.09	-1,905.00	9,418.08	0.00	0.00	0.00	
17,100.00	90.00	180.06	7,150.00	-9,516.09	-1,905.11	9,518.08	0.00	0.00	0.00	
17,200.00	90.00	180.06	7,150.00	-9,616.09	-1,905.22	9,618.08	0.00	0.00	0.00	
17,300.00	90.00	180.06	7,150.00	-9,716.09	-1,905.33	9,718.08	0.00	0.00	0.00	
17,400.00	90.00	180.06	7,150.00	-9,816.09	-1,905.45	9,818.08	0.00	0.00	0.00	
17,500.00	90.00	180.06	7,150.00	-9,916.09	-1,905.56	9,918.08	0.00	0.00	0.00	
17,584.98	90.00	180.06	7,150.00	-10,001.07	-1,905.65	10,003.06	0.00	0.00	0.00	
BPZ @ 17584.98ft										
17,600.00	90.00	180.06	7,150.00	-10,016.09	-1,905.67	10,018.08	0.00	0.00	0.00	
17,674.96	90.00	180.06	7,150.00	-10,091.04	-1,905.75	10,093.03	0.00	0.00	0.00	
TD Well @ 17674.96ft										

Casing Points					
Measured Depth (usft)	Vertical Depth (usft)	Name		Casing Diameter (")	Hole Diameter (")
2,367.10	2,304.00	9 5/8"		9-5/8	13-1/2

Planning Report

Database:	EDM 5000.16 Single User Db	Local Co-ordinate Reference:	Well TIGER 0916-08H
Company:	VERDAD RESOURCES	TVD Reference:	RKB = 24' @ 5129.00usft (RIG)
Project:	WATTENBERG FIELD	MD Reference:	RKB = 24' @ 5129.00usft (RIG)
Site:	1N-64W-10 TIGER 0916 PAD	North Reference:	True
Well:	TIGER 0916-08H	Survey Calculation Method:	Minimum Curvature
Wellbore:	Wellbore #1		
Design:	Design #1		

Plan Annotations				
Measured Depth (usft)	Vertical Depth (usft)	Local Coordinates		Comment
		+N/-S (usft)	+E/-W (usft)	
370.05	370.05	0.00	0.00	Begin Nudge @ 370.05ft
1,225.05	1,212.41	12.36	-126.04	Change Tangent Direction @ 1225.05ft
1,357.68	1,339.21	19.19	-164.32	Hold Tangent @ 1357.68ft
6,751.66	6,494.73	419.78	-1,698.94	KOP @ 6751.66ft :: DLS = 9°/100'
7,798.78	7,150.00	-214.87	-1,894.76	End Build/TPZ @ 7798.78ft
17,584.98	7,150.00	-10,001.07	-1,905.65	BPZ @ 17584.98ft
17,674.96	7,150.00	-10,091.04	-1,905.75	TD Well @ 17674.96ft