



**RADIAL BOND LOG
GAMMA RAY
CCL / VDL / MAP**

Company CHEVRON
Well UNI-UPRR 4-25
Field WATTENBERG-90750
County WELD
State COLORADO
Country U.S.A.

Company CHEVRON
Well UNI-UPRR 4-25
Field WATTENBERG-90750
County WELD
State COLORADO
Country U.S.A.

Location: API #: 052-123-13607
Otr. Qtr. NWNW
SEC 25 TWP 4N RGE 64W
Permanent Datum G.L. Elevation 4692'
Log Measured From K.B. K.B. 4703'
Drilling Measured From K.B. G.L. 4702'
G.L. 4692'

Other Services

Date APRIL 6th, 2023

Run Number 1

Depth Driller 7340'

Depth Logger 2517'

Bottom Logged Interval 2507'

Top Log Interval SURFACE

Open Hole Size 8-5/8"

Type Fluid WATER

Density / Viscosity 8.3#

Max. Recorded Temp. N/A

Estimated Cement Top N/A

Time Well Ready N/A

Time Logger on Bottom N/A

Equipment Number DSSHSR20-002

Location MILLIKEN, CO

Recorded By J. MICHAEL

Witnessed By MR. ERIC PETERSON

Borehole Record		Tubing Record					
Run Number	Bit	From	To	Size	Weight	From	To


Record	Size	Wgt/Ft	Top	Bottom
Casing Record	8-5/8"	24# J-55	SURFACE	306'
Surface String				
Prot. String				
Production String	4-1/2"	15.1# N-80	SURFACE	7053'
Liner				

<<< Fold Here >>>

All interpretations are opinions based on inferences from electrical or other measurements and we cannot and do not guarantee the accuracy or correctness of any interpretation, and we shall not, except in the case of gross or willful negligence on our part, be liable or responsible for any loss, costs, damages, or expenses incurred or sustained by anyone resulting from any interpretation made by any of our officers, agents or employees. These interpretations are also subject to our general terms and conditions set out in our current Price Schedule.

Comments

NO CORRELATION LOG AVAILABLE

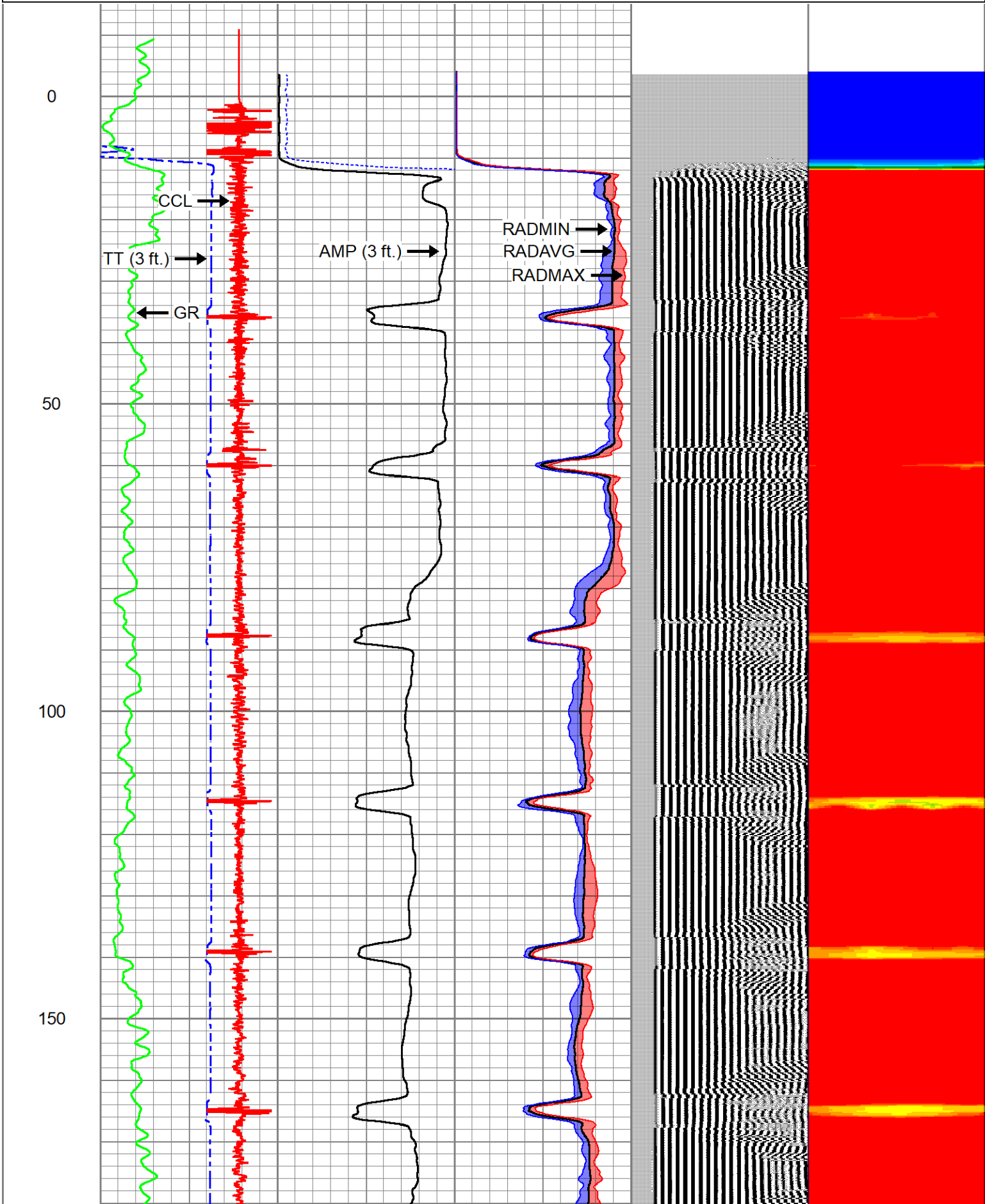
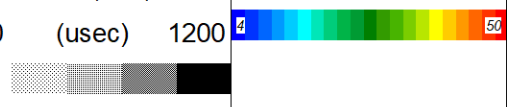
Sensor	Offset (ft)	Schematic	Description	Length (ft)	O.D. (in)	Weight (lb)
			Cable_Head-1_7/16 Titan 1 7/16" Cable Head	1.02	1.44	3.31

			Centralizers-Sondex PRC 2.75" Roller Centralizers Tekco 2 3/4" Adjustable Centralizer	3.00	2.75	25.00
CCL	0.00					
TCF	0.00					
GRHV	0.94					
GR	0.94					
			DSS_HSR_ELE-DSS_HSR_20_ELE (HSR20 0000) DSS 2 3/4" HSR Bond tool - Electronics Module	4.81	2.75	61.00
ROTV	4.10					
THV	4.10					
INTEMP	4.10					
PNEG	4.10					
PPOS	4.10					
WVFS8	6.09					
WVFS7	6.09					
WVFS6	6.09					
WVFS5	6.09					
WVFS4	6.09					
WVFS3	6.09		DSS_HSR_SND-DSS_HSR_20_SND (HSR20 0000) DSS 2 3/4" HSR Bond tool - Sonde Module	7.70	2.75	86.00
WVFS2	6.09					
WVFS1	6.09					
WVFCAL	6.59					
WVF3FT	6.59					
WVF5FT	7.59					
TEMP	11.67					
WVFSYNC	11.80					
			Centralizers-Sondex PRC 2.75" Roller Centralizers Tekco 2 3/4" Adjustable Centralizer	3.00	2.75	25.00

Dataset: chevron-uni uprr 4-25.db: WATTENBERG-90750/UNI-UPRR_4-25/DSSHSR20-002/RBL.1
 Total length: 19.52 ft
 Total weight: 200.31 lb
 O.D.: 2.75 in

Database File chevron-uni uprr 4-25.db
 Dataset Pathname WATTENBERG-90750/UNI-UPRR_4-25/DSSHSR20-002/RBL.1
 Presentation Format ranger_dss_radial
 Dataset Creation Thu Apr 06 17:34:41 2023
 Charted by Depth in Foot scaled 1:240

TT (3 ft.)		AMP (3 ft.)		0	RADAVG	100	VDL (5 ft.)		1	RADIAL MAP	6
350	(usec)	120	0	(mV)	100	0	RADMAX	100	200	(usec)	1200
-20000 CCL 20000		0 AMP3FT (mV) 20		0		RADMIN		0		100	
0 GR (GAPI) 150											



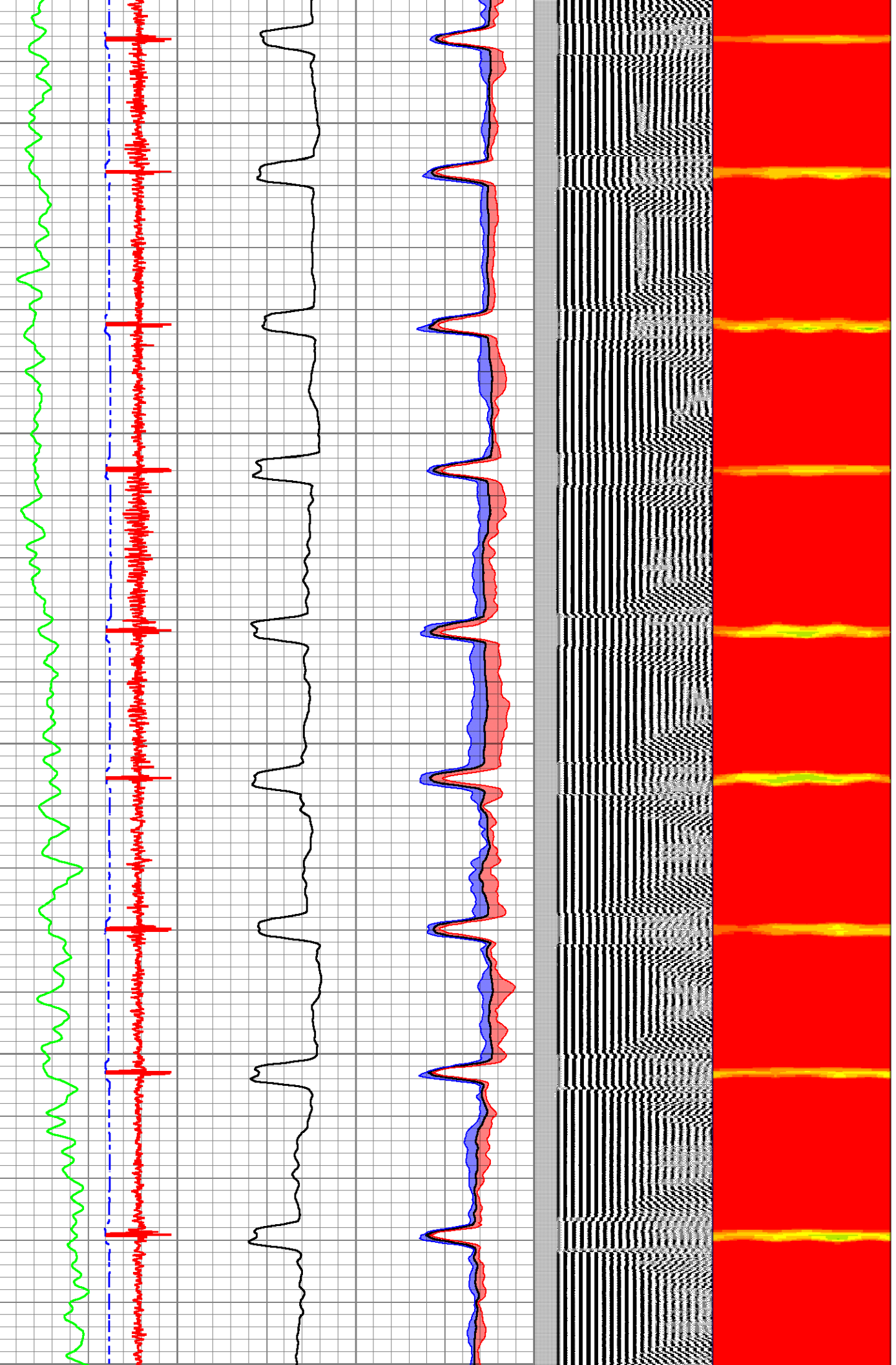
200

250

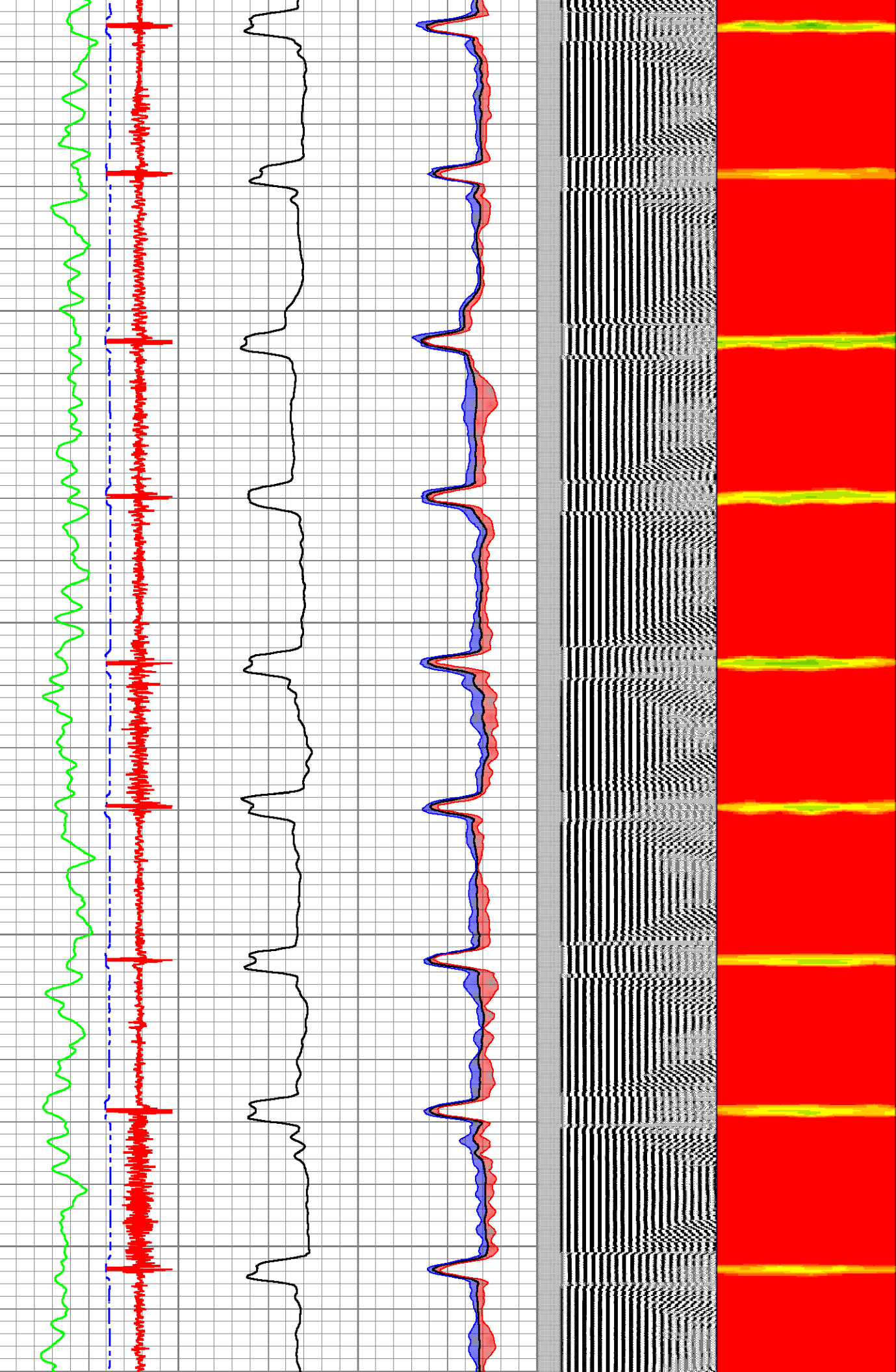
300

350

400



400
450
500
550
600

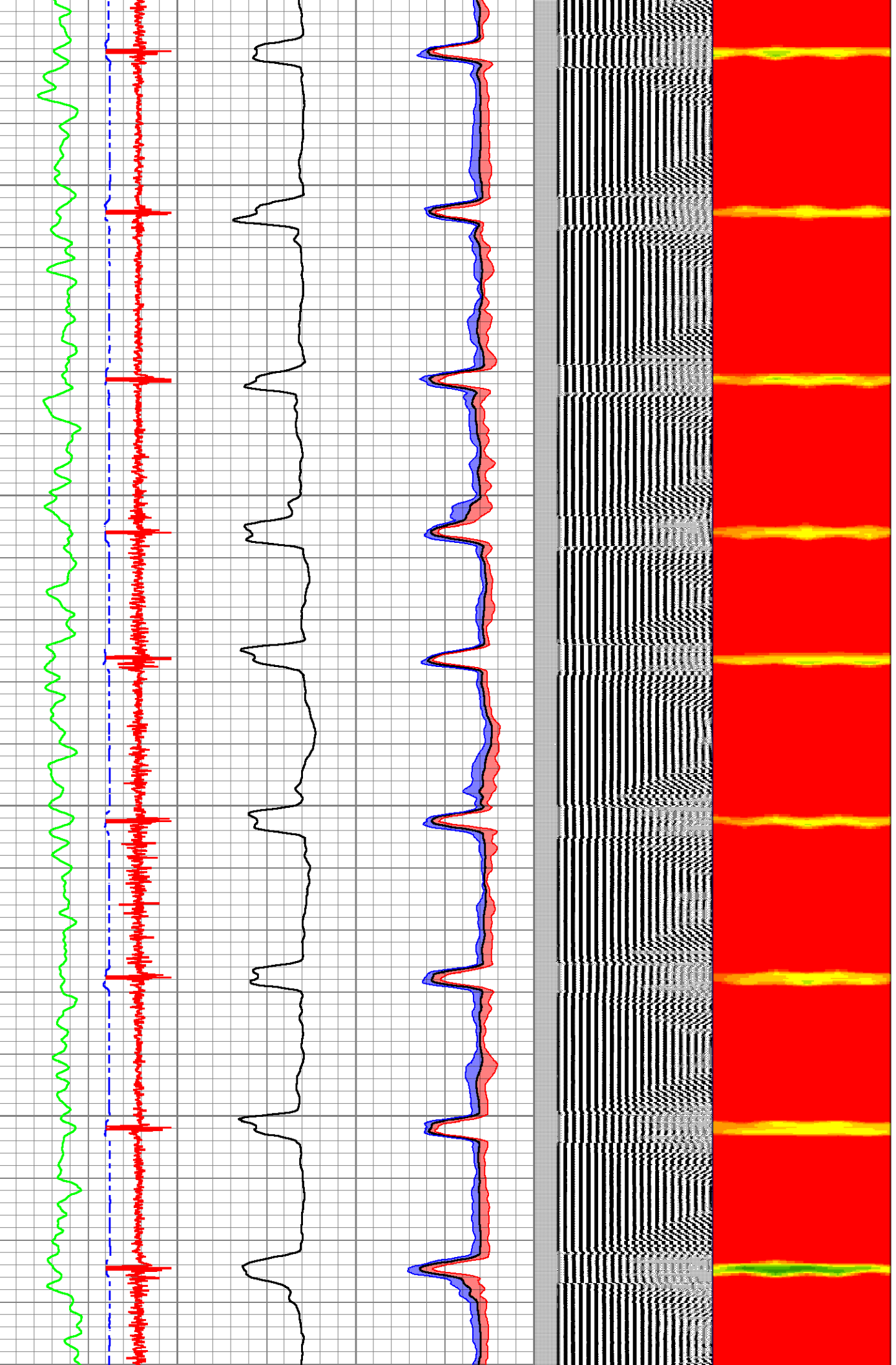


650

700

750

800



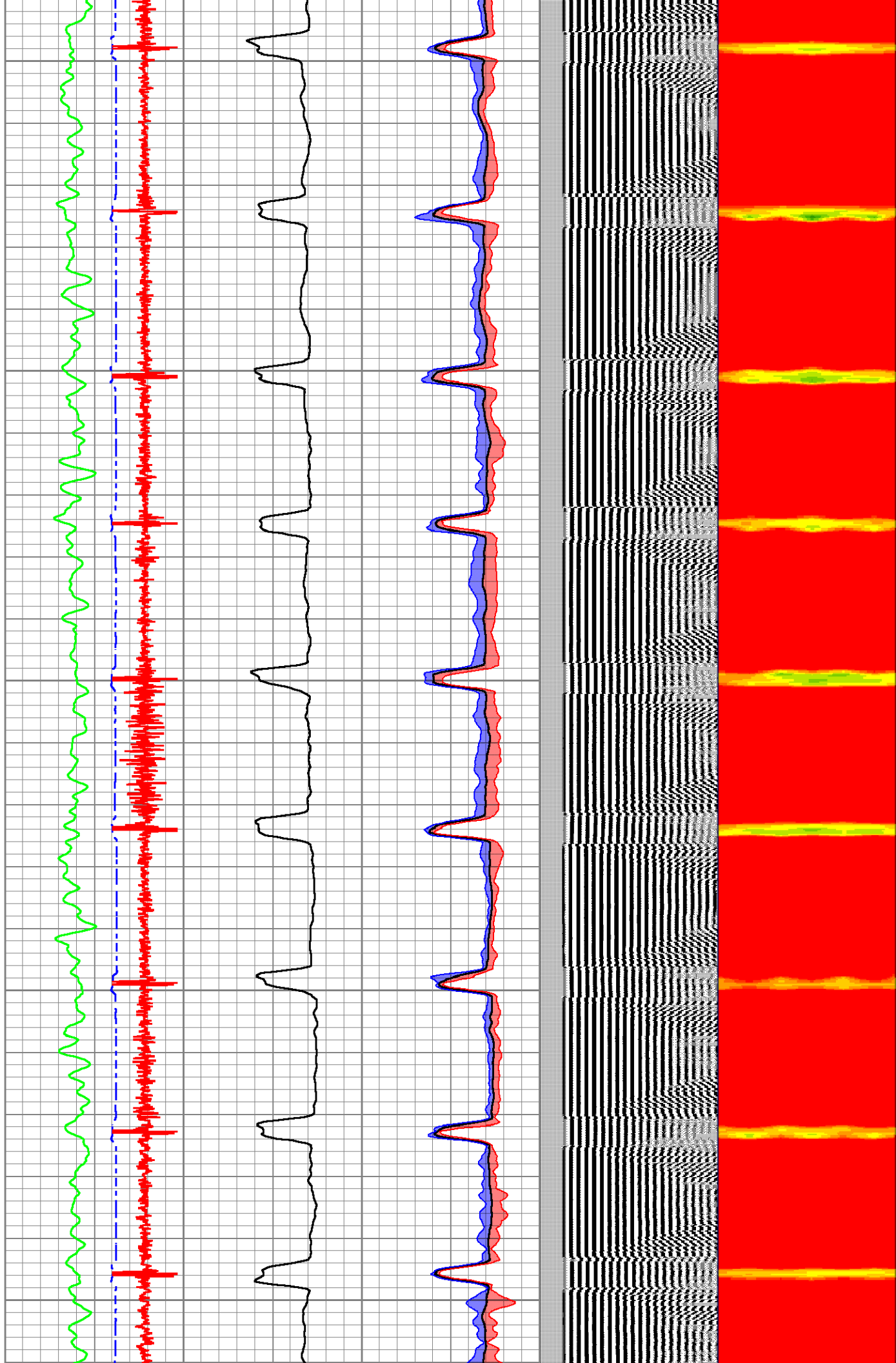
850

900

950

1000

1050

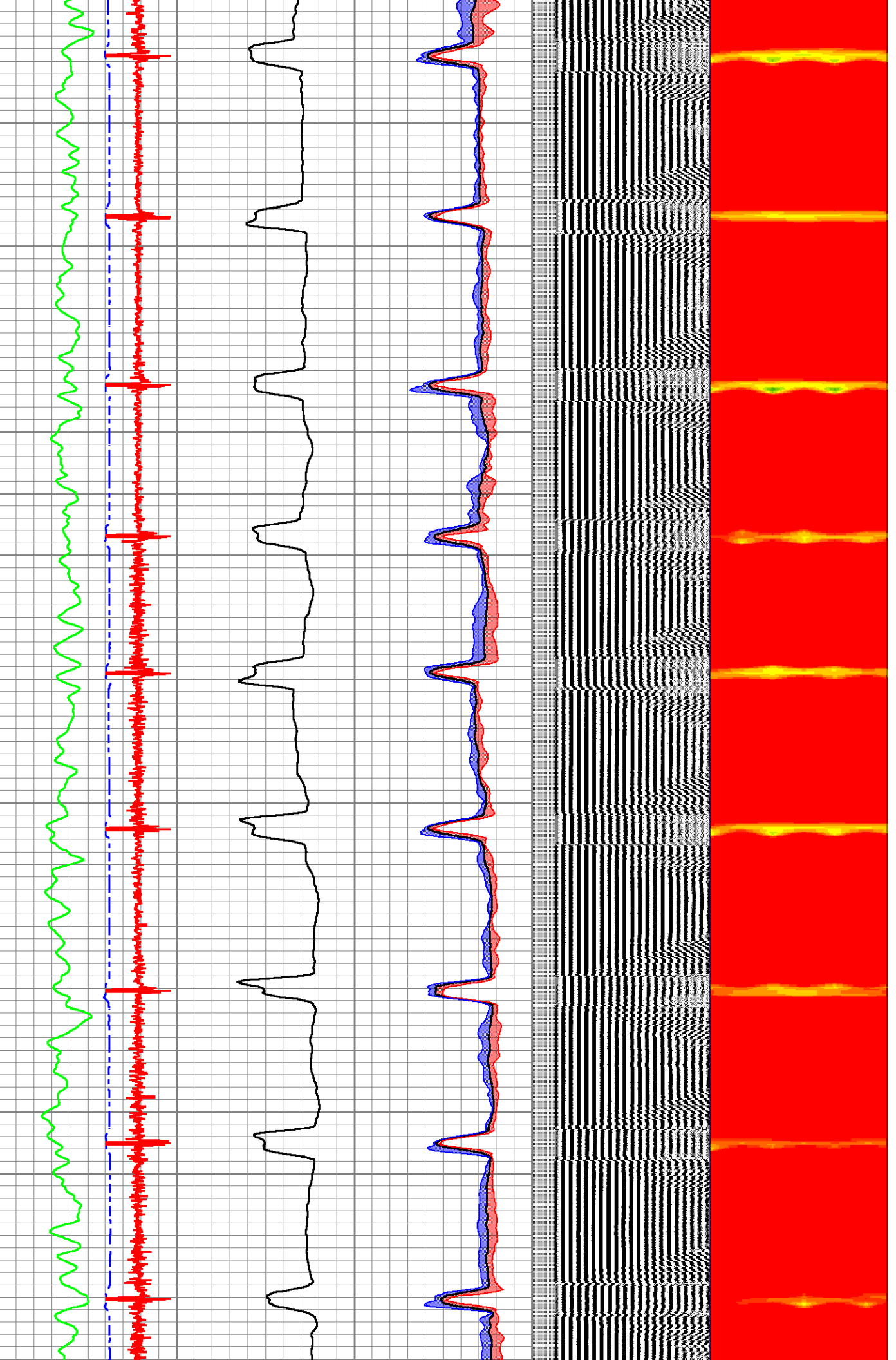


1100

1150

1200

1250



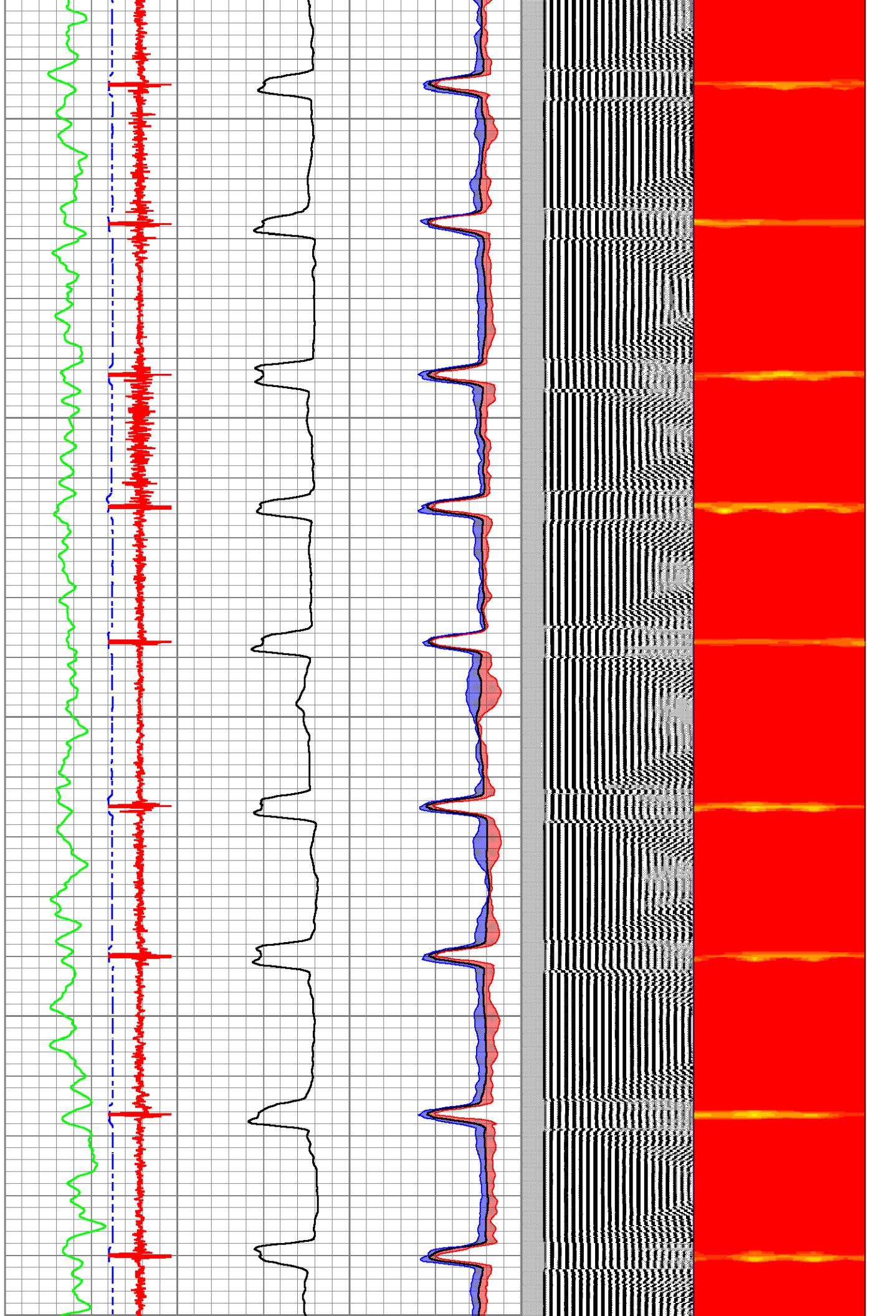
1300

1350

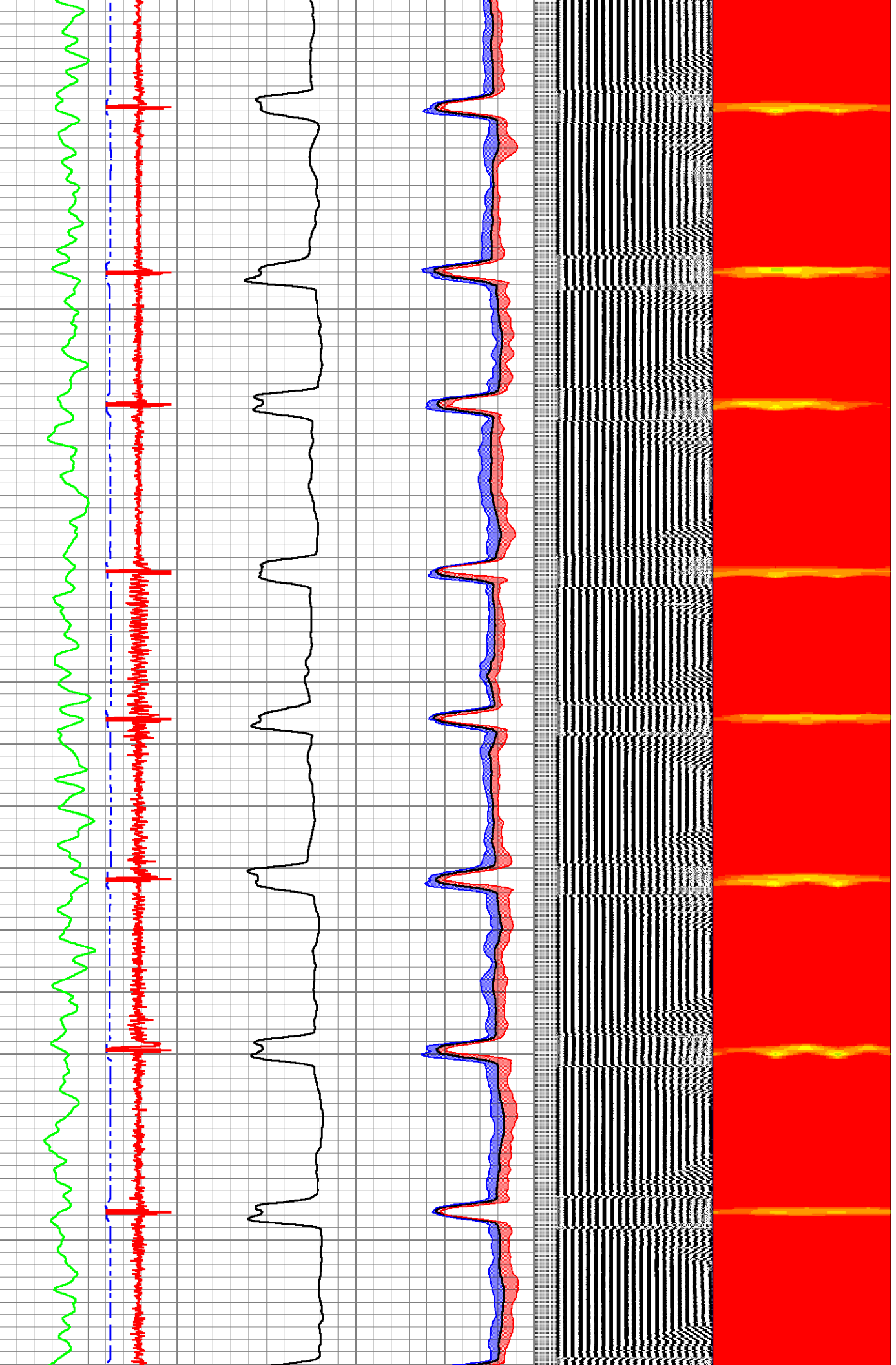
1400

1450

1500



1500
1550
1600
1650
1700

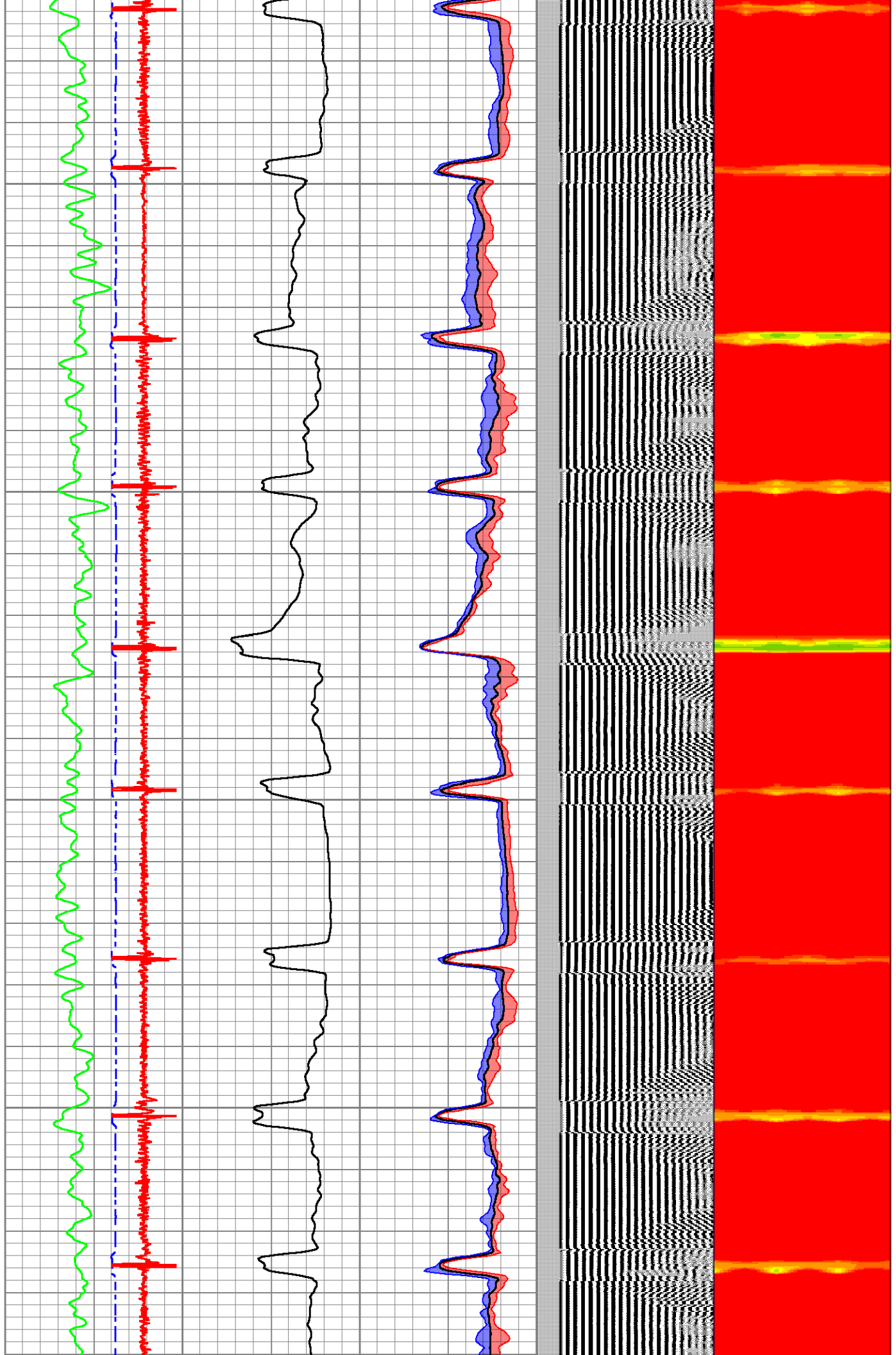


1750

1800

1850

1900



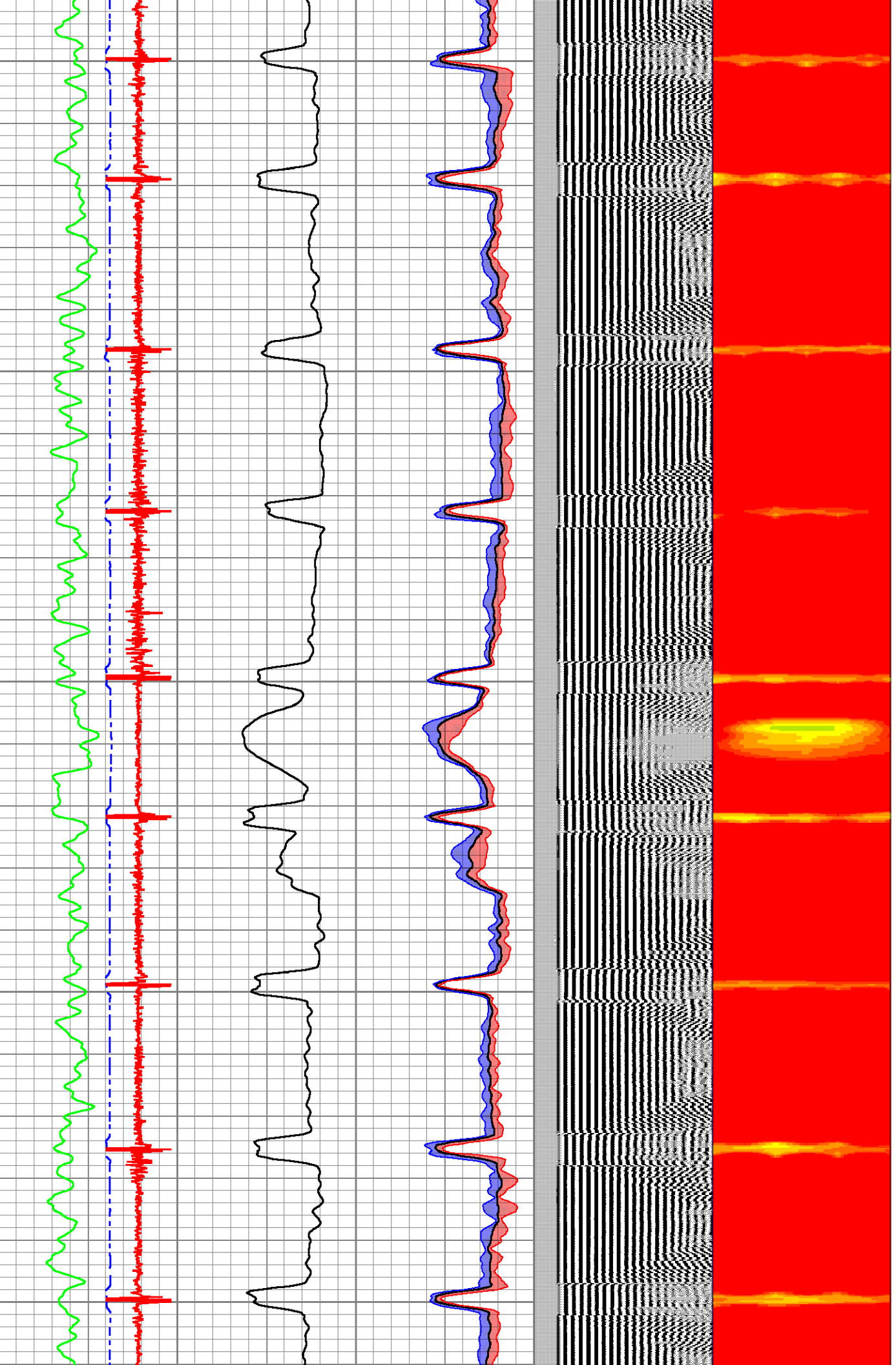
1950

2000

2050

2100

2150

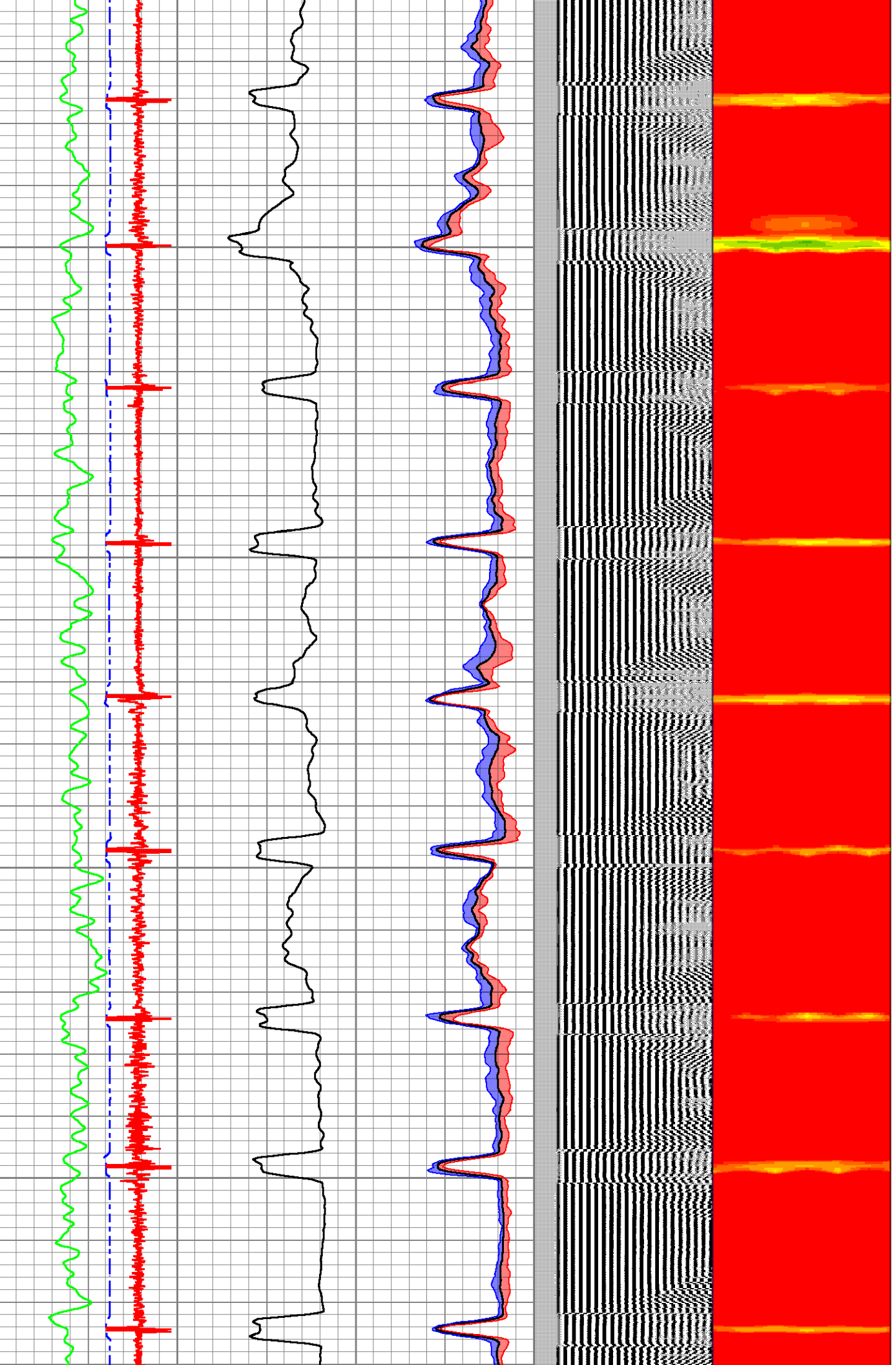


2200

2250

2300

2350



2400

2450

2500

2550

2600

GR →

TT (3 ft.) →

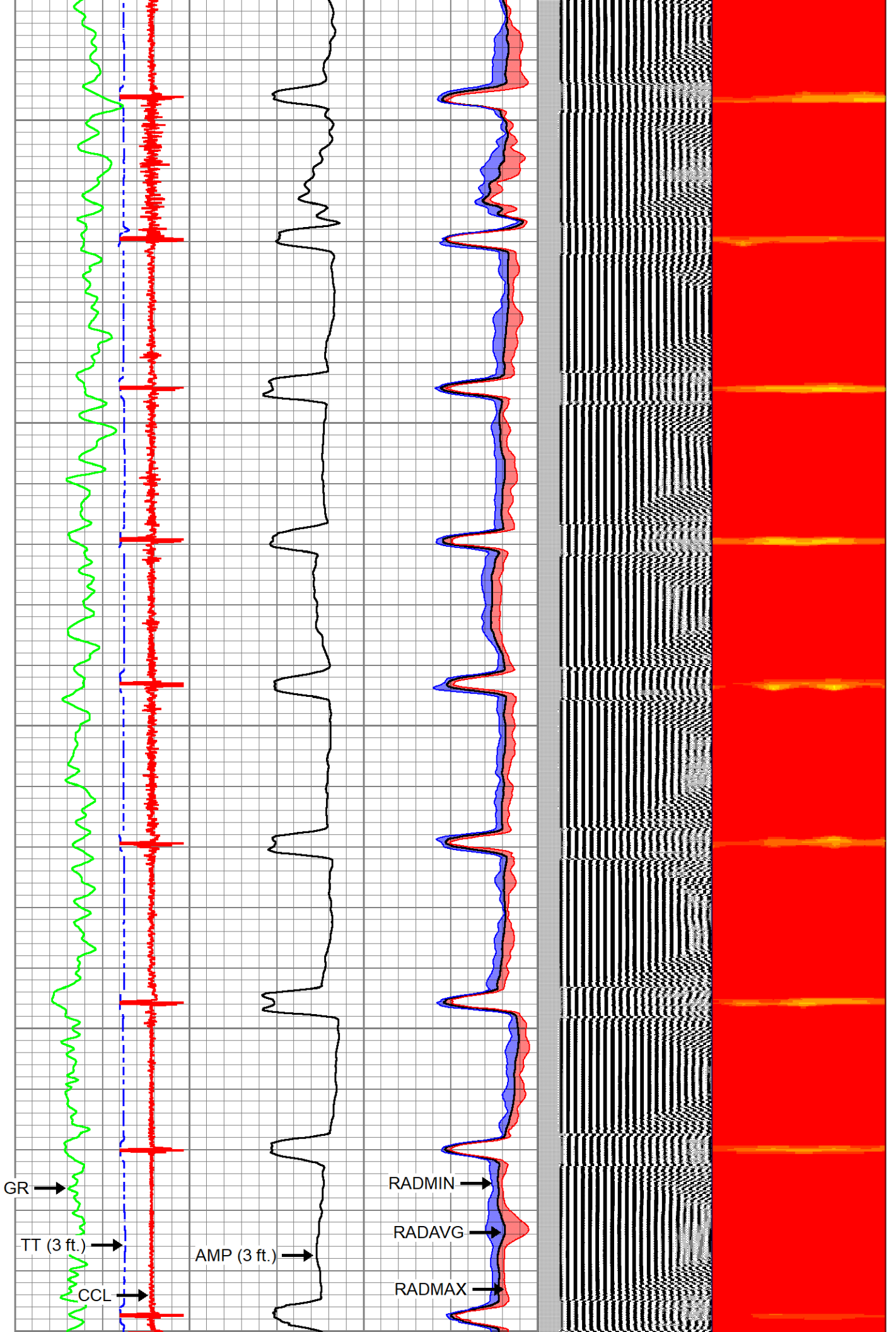
CCL →

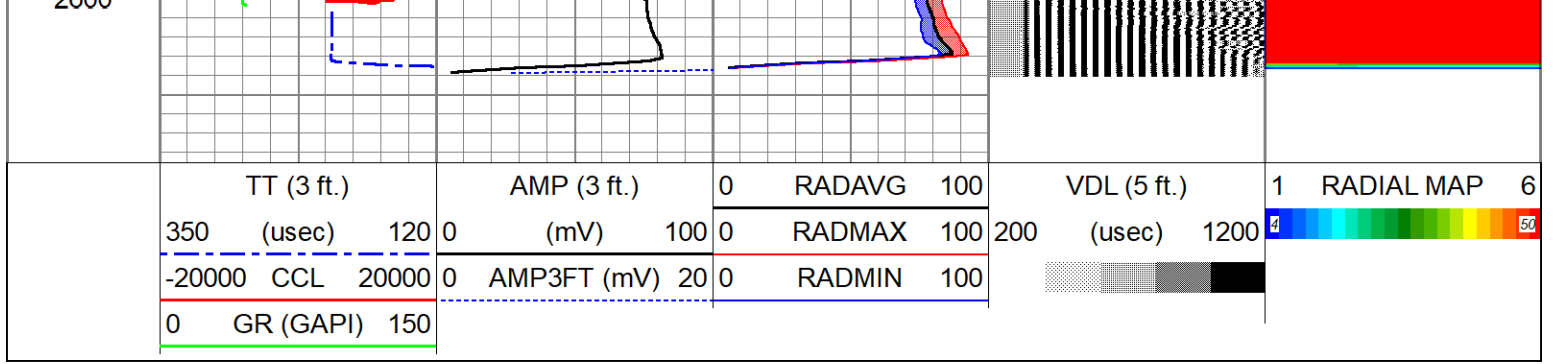
AMP (3 ft.) →

RADMIN →

RDAVG →

RADMAX →





Company	CHEVRON	Country	U.S.A.
Well	UNI-UPRR 4-25		
Field	WATTENBERG-90750		
County	WELD		
State	COLORADO		