

Tank Battery Closure Checklist

Additional Attachments (Optional)	Partially Buried Vault Closure
Site Name & COGCC Facility Number	Ditlev-Simonsen GU 2 O SA
Remediation Project #	25682
Site Information	
General Condition of Site	Good condition
USCS Soil Type	<i>Sandy Clay / Sandy Clay</i>
Estimated Depth to Groundwater	<20'
Hydrocarbon Impacted Soils / Spills	HC impacted soils encountered
Salt Crusted Soils or Impacted Vegetation	None observed

Tanks			
#	PID Readings	Sample Taken?	Sample ID #
R1	0.8	Yes	AST-B01@3"
R2	1.0	Yes	AST-B02@3"
R3	1.6	Yes	PW-B01@5'
R4	1.4	Yes	PW-N01@2.5'
R5	2.4	Yes	PW-S01@2.5'
R6	2.7	Yes	PW-E01@2.5'
R7	3.6	Yes	PW-W01@2.5'
R8	0.9	Yes	PW-B02@15'
R9	15.5	Yes	PW-B03@15'
R10	0.6	Yes	PW-B04@15'
R11	0.3	Yes	PW-B05@15'
R12	9.9	Yes	PW-B06@15'
R13	3.1	Yes	PW-S01@7'
R14	207.2	Yes	PW-S01@14'
R15	21.9	Yes	PW-S02@7'
R16	4.3	Yes	PW-S02@14'
R17	5.1	Yes	PW-S03@7'
R18	67.9	Yes	PW-S03@14'
R19	299.1	Yes	PW-W01@7'
R20	123.9	Yes	PW-W01@14'
R21	11.7	Yes	PW-W02@7'
R22	32.7	Yes	PW-W02@14'
R23	30.1	Yes	PW-N01@7'
R24	1371	Yes	PW-N01@14'

#	PID Readings	Sample Taken?	Sample ID #
R25	79.8	Yes	PW-N02PBV@7'
R26	1159	Yes	PW-N02@14'
R27	25.9	Yes	PW-N03@7'
R28	836.9	Yes	PW-N03@14'
R29	26.3	Yes	PW-N04@7'
R30	18.6	Yes	PW-N04@14'
R31	650.9	Yes	PW-E01@7'
R32	372.8	Yes	PW-E01@14'
R33	1624	Yes	PW-E02@7'
R34	1511	Yes	PW-E02@14'
R35	161.2	Yes	PW-E03@7'
R36	1450	Yes	PW-E04@14'

Photo(s)

R1 - P1



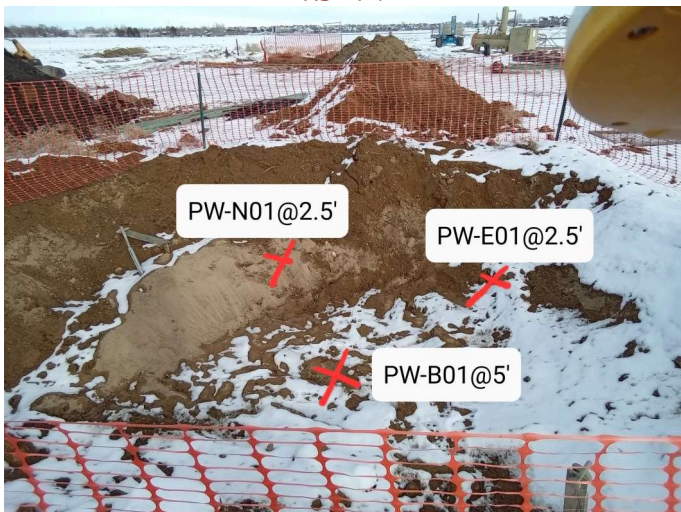
Looking west

R1 - P2



Looking west

R3 - P1



Looking west

R5 - P1



Looking west

R12 - P1



Looking west

R18 - P1



Looking south

R22 - P1



Looking west

R30 - P1



Looking north

R35 - P1



Looking east

Other observations regarding tanks

Separators

#	PID Readings	Sample Taken?	Sample ID #
R1	6.2	Yes	SEP-B01@3'
R2	3.5	Yes	SEP-B02@3'

Photo(s)

R1 - P1



Looking west

Other observations regarding separators

Third Party Equipment

#	Type	Sample Taken?	Sample ID #	PID Readings
R1	Meter House	Yes	MH-B01@3"	2.1

Photo(s)

R1 - P1



Looking west

Other Facility Equipment

#	Equipment type	PID Readings	Sample Taken?	Sample ID #
R1	Background	2.8	Yes	PW-BG01@3'
R2	Background	3.1	Yes	PW-BG01@6'
R3	Dumpline	1.8	Yes	DL-B01@3'
R4	Dumpline	2.7	Yes	DL-B02@3'

Photo(s)

R1 - P1



Looking west

R3 - P1



Looking west



Looking west

Other observations regarding other facility or third party equipment

Summary

Was impacted soil identified?	Yes - more than 10 cubic yards
Total number of soil samples field screened	38
Total number of soil samples collected	38
Highest PID Reading	1450
Total number of soil samples submitted to lab for analysis	31
Vertical Extent	
Lateral Extent	
Estimated spill volume	
Volume of soil removed	
Is additional investigation required?	
Was groundwater encountered during the investigation?	Yes - groundwater impacted and/or in contact with impacted soils
Measured depth to groundwater	
Was remedial groundwater removal conducted?	
Date Groundwater was encountered	
Commencement date of removal	
Sheen on groundwater?	Yes
Free product observed?	
Volume of groundwater removed prior to sampling	
Volume of groundwater removed post sampling	
Total volume of groundwater removed	
Total number of groundwater samples collected	
Total number of groundwater samples submitted to lab for analysis	