

FOUNDED 1943  
**Relax ENGINEERING COMPANY**  
 7005 - MIDLAND, TEXAS - PHONE MU 4-6631  
 HYDROCARBON ANALYSIS LOG

BY U.S. GME REFINING & MINING CO.  
 WELL W.W. MCWILLIAMS, B-90, WELL NO. 1-29  
 FIELD NORTH CRAIG  
 COUNTY MOFFAT STATE COLORADO

DEPTH LOGGED FROM 0' TO 3300'  
 DATE LOGGED FROM 9-8-57 TO 9-14-57  
 SUPERVISING ENGINEER D. J. LYLE  
 UNITY NO. AP-5

ELEVATION  
 NB - NEW BIT  
 DCB - DIAMOND CORE BIT  
 NR - NO RETURNS

CO - CALCULATED OUT  
 OST - DRILL STEM TEST  
 T - TOTAL GAS  
 F - FREE FRACTION GAS

LEGEND  
 GRANITE  
 CHERT  
 ANHYDRITE  
 CONGLOMERATE  
 SAND  
 LIMESTONE  
 DOLOMITE  
 SANDY SHALE  
 SHALE  
 COAL

DRILLING RATE  
 MIN/FT  
 FT/HR

DEPTH  
 LITHOLOGY

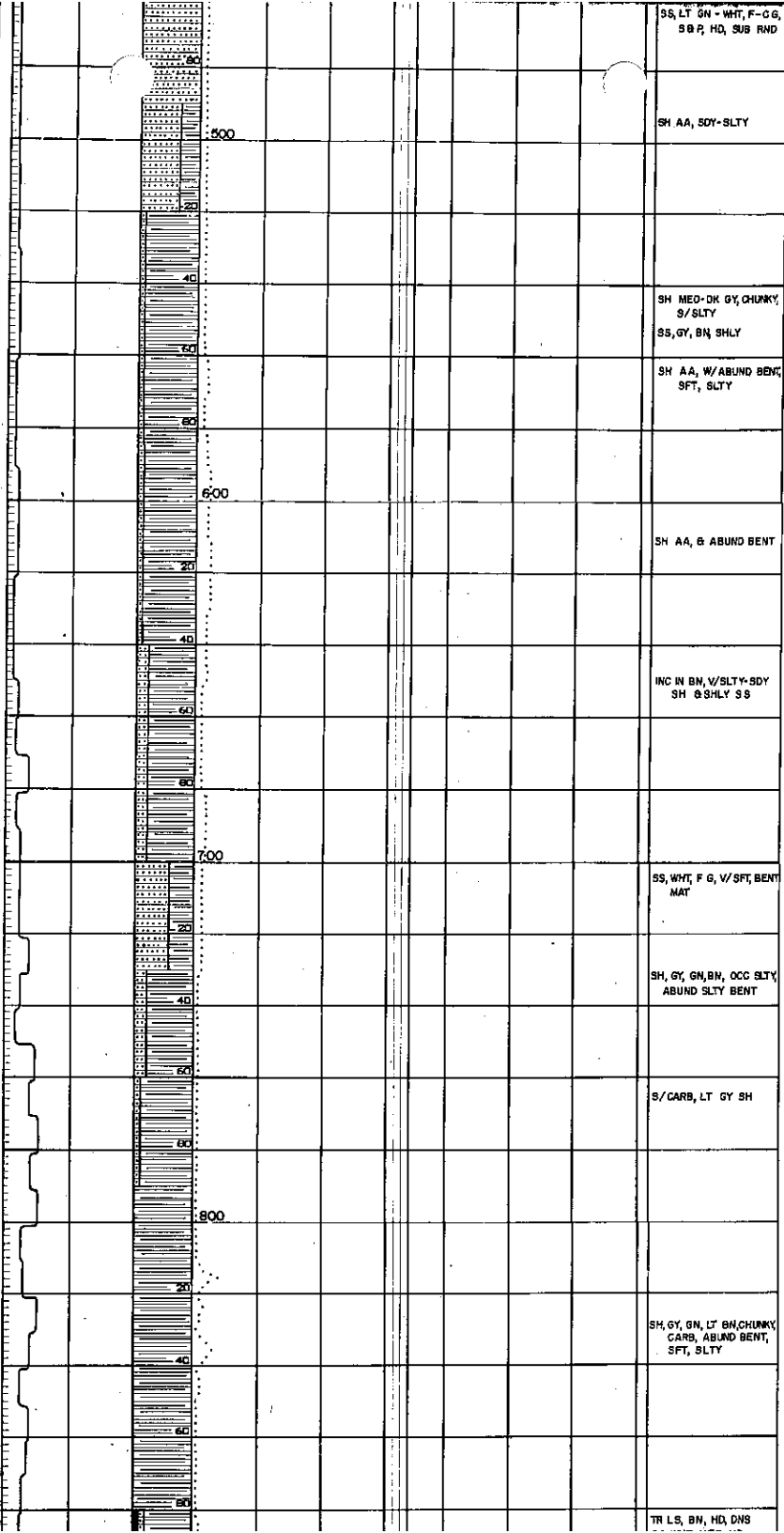
GAS FROM MUD  
 20 60 140

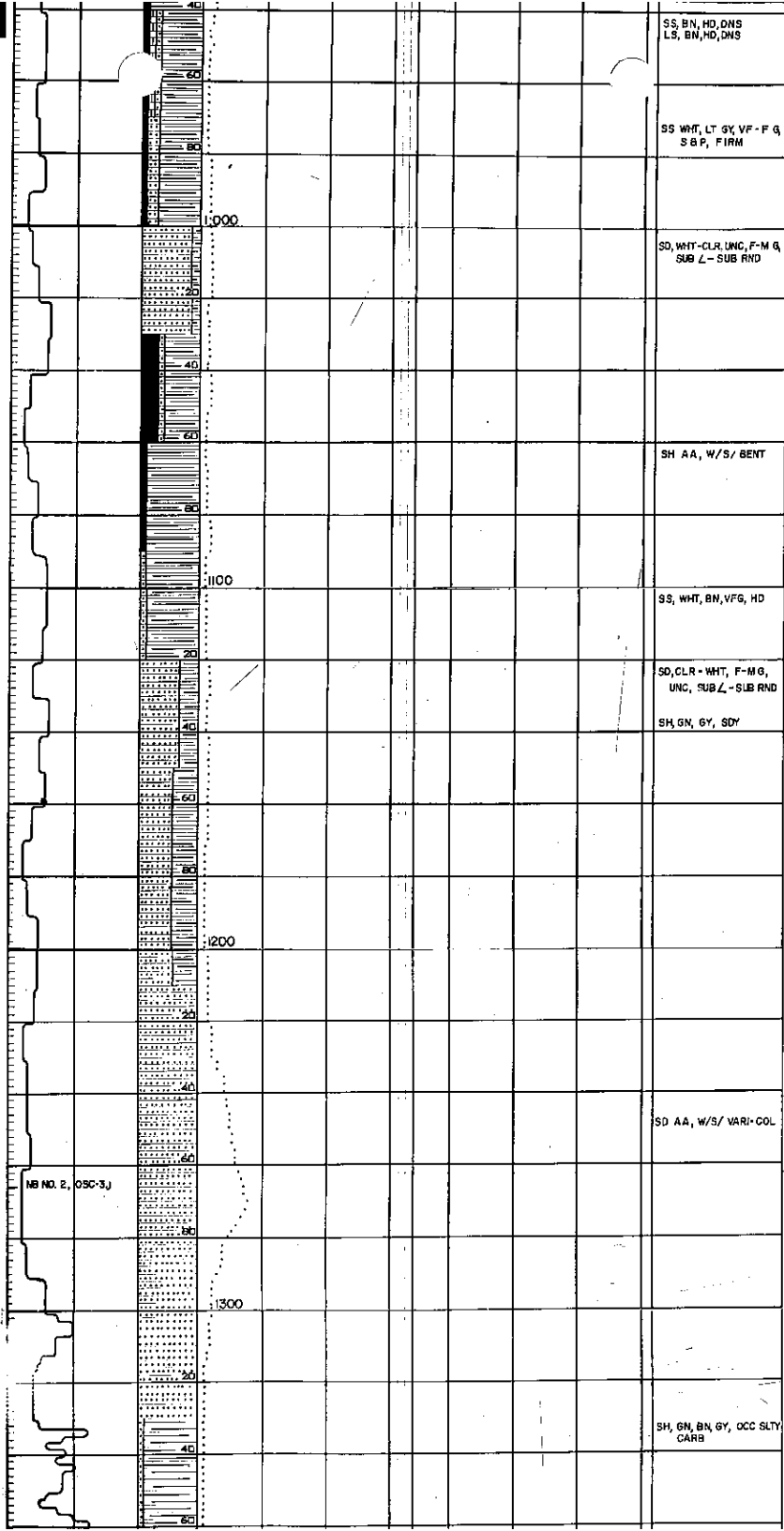
RESISTIVITY OHMS/FOOT 50°C  
 GAS FROM CUTTINGS  
 20 60 140

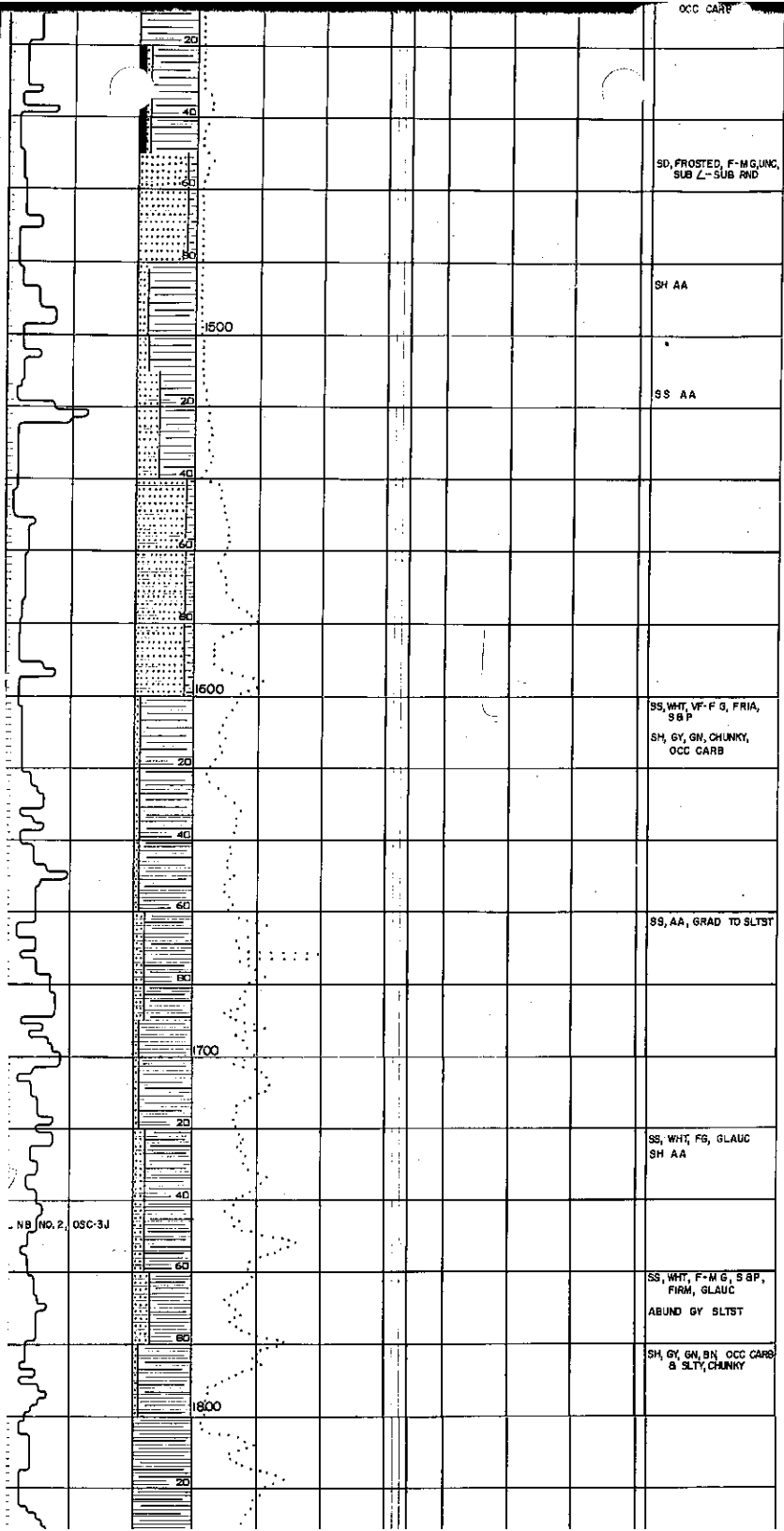
REMARKS  
 VACUUM GAS CORES  
 GSY, ETC  
 W V F CK PH SAL

DRILLING RATE MIN/FT FT/HR	DEPTH LITHOLOGY	GAS FROM MUD 20 60 140	RESISTIVITY OHMS/FOOT 50°C GAS FROM CUTTINGS 20 60 140	REMARKS VACUUM GAS CORES GSY, ETC W V F CK PH SAL
7 7/8" OSC-3J 13 3/4" REAMER				
				SS, CLR-WHT, S/YELL ST M-V/C G, UNC
				SS, MULTI-COL, M-V/C G, S/CONS, S/ BY SUBST
				SS, V/F - V/C G, WHT/W S/YELL ST, UNC
				SH, MED GY, CHUNKY
				SH, MED GY, CHUNKY
				SH, AA, B SL/SLTY
				SS, WHT, F-M G, S & P, OCC CONSOL, FRIA
				SH, GN, GY, BN, CHUNKY, SLTY - SDY
				SS, GN, V/SPLY, VF-FG

SET 9 5/8" CSG TO 320'  
 NB 100', OSC-3J







SD, FROSTED, F-M LUNK,  
SUB L-SUB RID

SH AA

SS AA

SS, WHI, VF-F G, FRIA,  
S P  
SH, GY, GN, CHUNKY,  
OCC CARB

SS, AA, GRAD TO SLTST

SS, WHI, FS, GLAUC  
SH AA

SS, WHI, F-M G, S P,  
FIRM, GLAUC  
ABUND GY SLTST

SH, GY, GN, BN, OCC CARB  
& SLTY, CHUNKY

NB No. 2, OSC-3J

20

40

60

80

1500

20

40

60

80

1500

20

40

60

80

1700

20

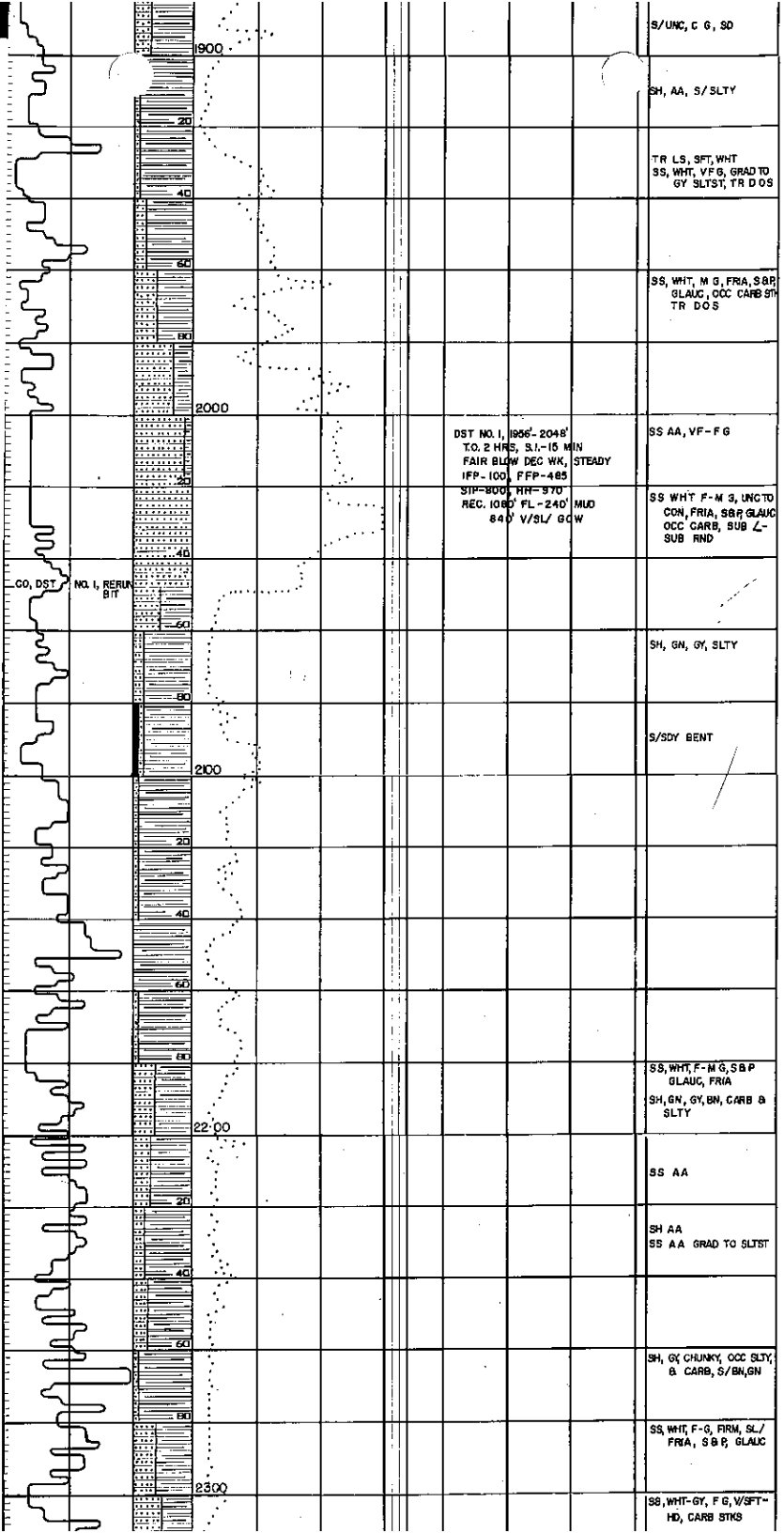
40

60

80

1800

20



S/UNC, C G, SD

SH, AA, S/SLTY

TR LS, SFT, WHT  
SS, WHT, VF G, GRAD TO  
GY SLTST, TR DOS

SS, WHT, M G, FRIA, S&P  
GLAUC, OCC CARB ST  
TR DOS

SS AA, VF-F G

DST NO. 1, 1956-2048  
TO 2 HRS, S.I.-15 MIN  
FAIR BLOW DEC WK, STEADY  
IFP-100, FFP-485  
SIP-800, RIF-370  
REC. 1000' FL-240' MUD  
840' V/S/L/ GCW

SS WHT F-M S, UNCTO  
CON, FRIA, S&P GLAUC  
OCC CARB, SUB L-  
SUB RND

CO. DST NO. 1, REFR  
BIT

SH, GN, GY, SLTY

S/SDY BENT

SS, WHT, F-M G, S&P  
GLAUC, FRIA  
SH, GN, GY, BN, CARB &  
SLTY

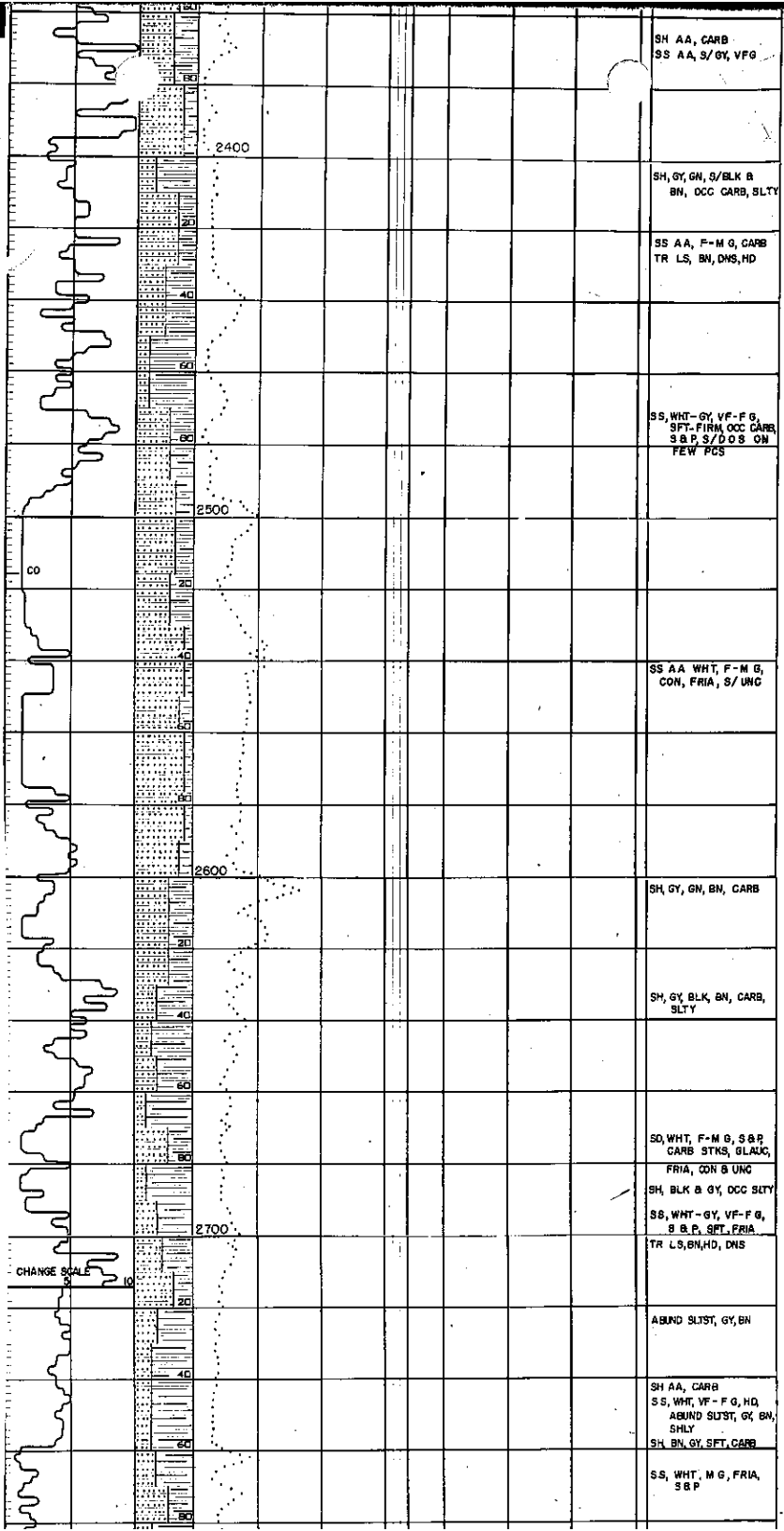
SS AA

SH AA  
SS AA GRAD TO SLTST

SH, GY CHUNKY, OCC SLTY,  
& CARB, S/BN, GN

SS, WHT, F-G, FIRM, SL/  
FRIA, S&P, GLAUC

SS, WHT-GY, F G, W/SFT-  
HD, CARB STKS



SH AA, CARB  
SS AA, S/GY, VFG

2400

SH, GY, GN, S/BLK B  
BN, OCC CARB, SLTY

SS AA, F-M G, CARB  
TR LS, BN, DNS, HD

SS, WHT-GY, VF-F G,  
SFT-FIRM, OCC CARB,  
S & P, S/D O S ON  
FEW PCS

2500

SS AA WHT, F-M G,  
CON, FRIA, S/UNC

2600

SH, GY, GN, BN, CARB

SH, GY, BLK, BN, CARB,  
SLTY

SD, WHT, F-M G, S & P,  
CARB STKS, GLAUC,  
FRIA, CON & UNC

SH, BLK & GY, OCC SLTY

SS, WHT-GY, VF-F G,  
S & P, SFT, FRIA

2700

TR LS, BN, HD, DNS

CHANGE SCALE

ABUND SLTST, GY, BN

SH AA, CARB  
SS, WHT, VF-F G, HD,  
ABUND SLTST, GY, BN,  
SHLY  
SH, BN, GY, SFT, CARB

SS, WHT, M G, FRIA,  
S & P

