

FUNDARE RESOURCES OPERATING COMPANY, LLC

**WELD COUNTY
SEC 30-T10N-R58W
RAZOR FED 30K-1906**

OWB

Plan: PROPOSAL 1

Standard Planning Report

03 May, 2023

Project: WELD COUNTY
Site: SEC 30-T10N-R58W
Well: RAZOR FED 30K-1906
Wellbore: OWB
Design: PROPOSAL 1

PROJECT DETAILS: WELD COUNTY
 Geodetic System: US State Plane 1983
 Datum: North American Datum 1983
 Ellipsoid: GRS 1980
 Zone: Colorado Northern Zone
 System Datum: Mean Sea Level



Azimuths to True North
 Magnetic North: 7.23°
 Magnetic Field
 Strength: 52052.5nT
 Dip Angle: 67.01°
 Date: 5/2/2023
 Model: IGRF2020

WELL DETAILS: RAZOR FED 30K-1906

+N/-S	+E/-W	Northing	Easting	4828.00	Latitude	Longitude	Slot
0.00	0.00	1541250.97	3440159.34		40.808283°N	103.909933°W	

FORMATION TOP DETAILS

No formation data is available

SECTION DETAILS

Sec	MD	Inc	Azi	TVD	+N/-S	+E/-W	Dleg	TFace	VSect	Target
1	0.00	0.00	0.00	0.00	0.00	0.00	0.00	0.00	0.00	
2	200.00	0.00	0.00	200.00	0.00	0.00	0.00	0.00	0.00	
3	382.67	3.65	252.31	382.54	-1.77	-5.55	2.00	252.31	-1.59	
4	5506.22	3.65	252.31	5495.68	-100.97	-316.58	0.00	0.00	-90.51	
5	6417.65	90.00	0.56	6079.00	472.19	-346.31	10.00	108.22	483.32	LP-RAZOR FED 30K-1906
6	13962.41	90.00	0.56	6079.00	8016.58	-272.04	0.00	0.00	8021.19	BPZ-RAZOR FED 30K-1906
7	13962.83	90.00	0.56	6079.00	8017.01	-272.03	2.00	-90.00	8021.62	PBHL-RAZOR FED 30K-1906
8	14162.44	90.00	0.56	6079.00	8216.61	-270.10	0.00	0.00	8221.05	PBHL-RAZOR FED 30K-1906

ANNOTATIONS

MD	Inc	Azi	TVD	+N/-S	+E/-W	VSect	Departure	Annotation
200.00	0.00	0.00	200.00	0.00	0.00	0.00	0.00	Start Build 2.00
382.67	3.65	252.31	382.54	-1.77	-5.55	1.59	5.82	Start 5123.55 hold at 382.67 MD
5506.22	3.65	252.31	5495.68	-100.97	-316.58	-90.51	332.29	Start DLS 10.00 TFO 108.22
6417.65	90.00	0.56	6079.00	472.19	-346.31	483.32	910.23	Start 7544.76 hold at 6417.65 MD
13962.83	90.00	0.56	6079.00	8017.01	-272.03	8021.62	8455.41	Start 199.61 hold at 13962.83 MD
14162.44	90.00	0.56	6079.00	8216.61	-270.10	8221.05	8655.02	TD at 14162.44

DESIGN TARGET DETAILS

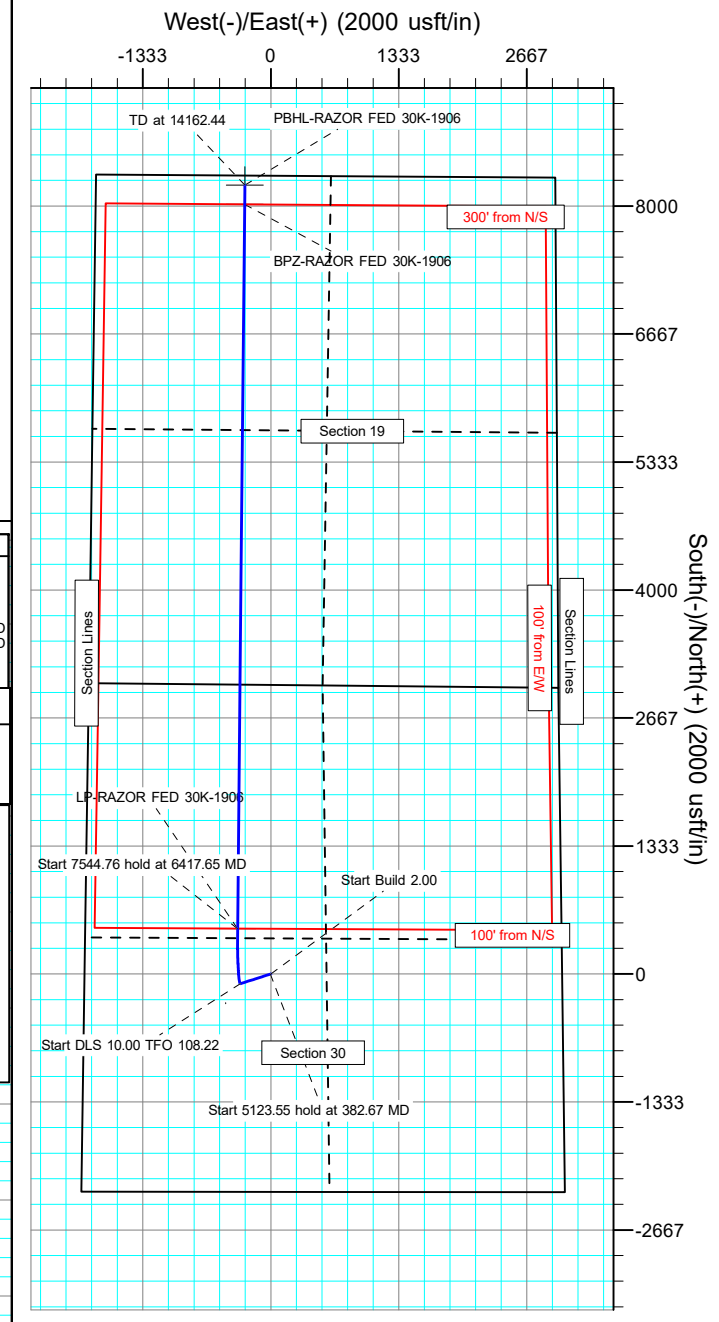
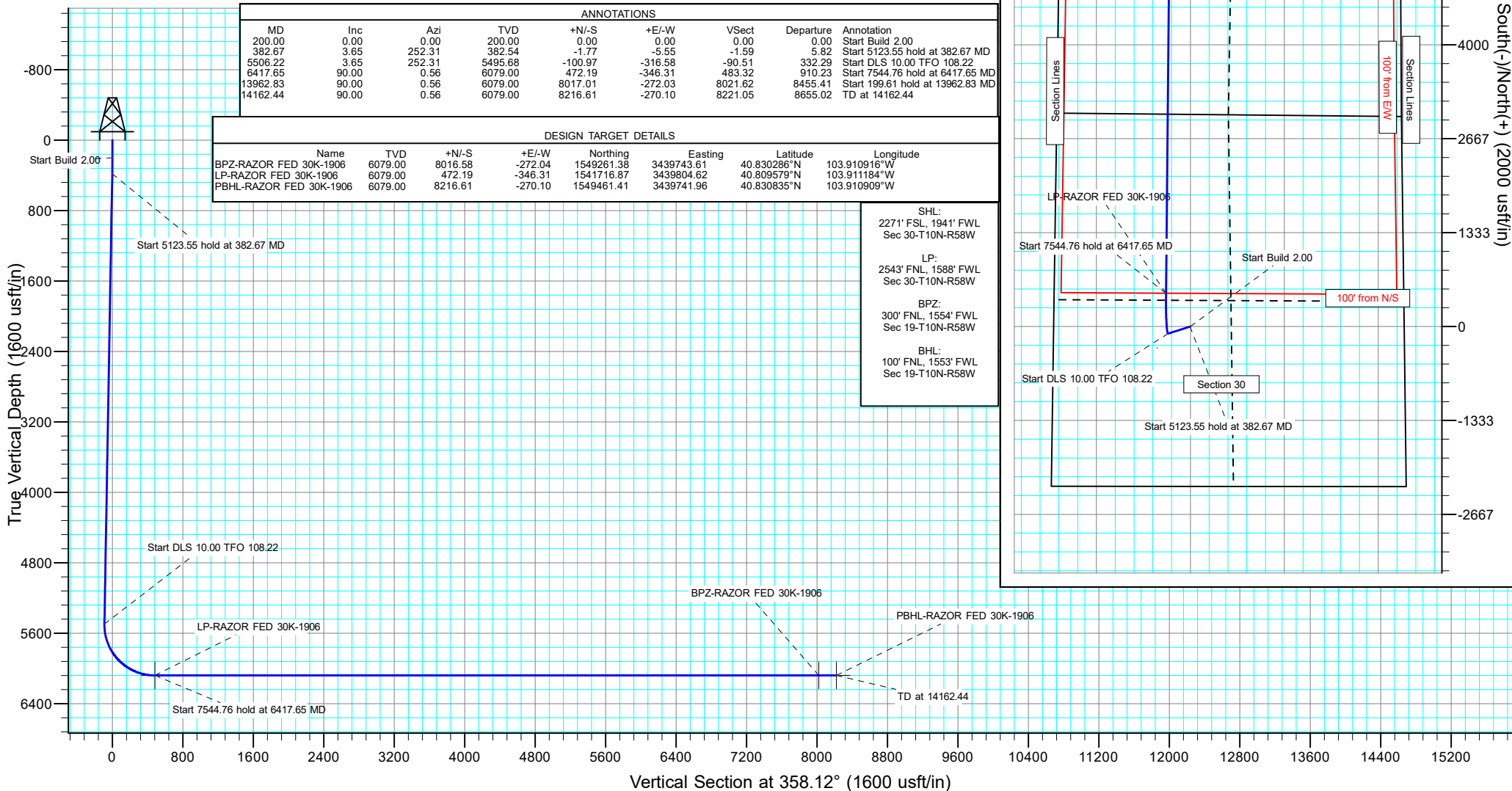
Name	TVD	+N/-S	+E/-W	Northing	Easting	Latitude	Longitude
BPZ-RAZOR FED 30K-1906	6079.00	8016.58	-272.04	1549261.38	3439743.61	40.830286°N	103.910916°W
LP-RAZOR FED 30K-1906	6079.00	472.19	-346.31	1541716.87	3439804.62	40.809579°N	103.911184°W
PBHL-RAZOR FED 30K-1906	6079.00	8216.61	-270.10	1549461.41	3439741.96	40.830835°N	103.910909°W

SHL:
 2271' FSL, 1941' FWL
 Sec 30-T10N-R58W

LP:
 2543' FNL, 1588' FWL
 Sec 30-T10N-R58W

BPZ:
 300' FNL, 1554' FWL
 Sec 19-T10N-R58W

BHL:
 100' FNL, 1553' FWL
 Sec 19-T10N-R58W



Planning Report

Database:	EDM 5000.16 Single User Db	Local Co-ordinate Reference:	Well RAZOR FED 30K-1906
Company:	FUNDARE RESOURCES OPERATING COMPANY, LLC	TVD Reference:	KB 25' @ 4853.00usft
Project:	WELD COUNTY	MD Reference:	KB 25' @ 4853.00usft
Site:	SEC 30-T10N-R58W	North Reference:	True
Well:	RAZOR FED 30K-1906	Survey Calculation Method:	Minimum Curvature
Wellbore:	OWB		
Design:	PROPOSAL 1		

Project	WELD COUNTY		
Map System:	US State Plane 1983	System Datum:	Mean Sea Level
Geo Datum:	North American Datum 1983		
Map Zone:	Colorado Northern Zone		

Site	SEC 30-T10N-R58W				
Site Position:		Northing:	1,538,948.03 usft	Latitude:	40.802058°N
From:	Lat/Long	Easting:	3,438,226.87 usft	Longitude:	103.917061°W
Position Uncertainty:	0.00 usft	Slot Radius:	13.200 in		

Well	RAZOR FED 30K-1906					
Well Position	+N/-S	0.00 usft	Northing:	1,541,250.97 usft	Latitude:	40.808283°N
	+E/-W	0.00 usft	Easting:	3,440,159.34 usft	Longitude:	103.909933°W
Position Uncertainty	0.00 usft		Wellhead Elevation:	usft	Ground Level:	4,828.00 usft
Grid Convergence:	1.03 °					

Wellbore	OWB				
Magnetics	Model Name	Sample Date	Declination (°)	Dip Angle (°)	Field Strength (nT)
	IGRF2020	5/2/2023	7.23	67.01	52,052.52720796

Design	PROPOSAL 1			
Audit Notes:				
Version:	Phase:	PROTOTYPE	Tie On Depth:	0.00
Vertical Section:	Depth From (TVD) (usft)	+N/-S (usft)	+E/-W (usft)	Direction (°)
	0.00	0.00	0.00	358.12

Plan Survey Tool Program	Date 5/3/2023			
Depth From (usft)	Depth To (usft)	Survey (Wellbore)	Tool Name	Remarks
1	0.00	14,162.44 PROPOSAL 1 (OWB)	MWD	
			OWSG MWD - Standard	

Planning Report

Database:	EDM 5000.16 Single User Db	Local Co-ordinate Reference:	Well RAZOR FED 30K-1906
Company:	FUNDARE RESOURCES OPERATING COMPANY, LLC	TVD Reference:	KB 25' @ 4853.00usft
Project:	WELD COUNTY	MD Reference:	KB 25' @ 4853.00usft
Site:	SEC 30-T10N-R58W	North Reference:	True
Well:	RAZOR FED 30K-1906	Survey Calculation Method:	Minimum Curvature
Wellbore:	OWB		
Design:	PROPOSAL 1		

Plan Sections										
Measured Depth (usft)	Inclination (°)	Azimuth (°)	Vertical Depth (usft)	+N/-S (usft)	+E/-W (usft)	Dogleg Rate (°/100ft)	Build Rate (°/100ft)	Turn Rate (°/100ft)	TFO (°)	Target
0.00	0.00	0.00	0.00	0.00	0.00	0.00	0.00	0.00	0.00	
200.00	0.00	0.00	200.00	0.00	0.00	0.00	0.00	0.00	0.00	
382.67	3.65	252.31	382.54	-1.77	-5.55	2.00	2.00	0.00	252.31	
5,506.22	3.65	252.31	5,495.68	-100.97	-316.58	0.00	0.00	0.00	0.00	
6,417.65	90.00	0.56	6,079.00	472.19	-346.31	10.00	9.47	11.88	108.22	LP-RAZOR FED 30K-
13,962.41	90.00	0.56	6,079.00	8,016.58	-272.04	0.00	0.00	0.00	0.00	BPZ-RAZOR FED 30I
13,962.83	90.00	0.56	6,079.00	8,017.01	-272.03	2.00	0.00	-2.00	-90.00	PBHL-RAZOR FED 3
14,162.44	90.00	0.56	6,079.00	8,216.61	-270.10	0.00	0.00	0.00	0.00	PBHL-RAZOR FED 3

Planning Report

Database:	EDM 5000.16 Single User Db	Local Co-ordinate Reference:	Well RAZOR FED 30K-1906
Company:	FUNDARE RESOURCES OPERATING COMPANY, LLC	TVD Reference:	KB 25' @ 4853.00usft
Project:	WELD COUNTY	MD Reference:	KB 25' @ 4853.00usft
Site:	SEC 30-T10N-R58W	North Reference:	True
Well:	RAZOR FED 30K-1906	Survey Calculation Method:	Minimum Curvature
Wellbore:	OWB		
Design:	PROPOSAL 1		

Planned Survey										
Measured Depth (usft)	Inclination (°)	Azimuth (°)	Vertical Depth (usft)	+N/-S (usft)	+E/-W (usft)	Vertical Section (usft)	Dogleg Rate (°/100ft)	Build Rate (°/100ft)	Turn Rate (°/100ft)	
0.00	0.00	0.00	0.00	0.00	0.00	0.00	0.00	0.00	0.00	
200.00	0.00	0.00	200.00	0.00	0.00	0.00	0.00	0.00	0.00	
Start Build 2.00										
300.00	2.00	252.31	299.98	-0.53	-1.66	-0.48	2.00	2.00	0.00	
382.67	3.65	252.31	382.54	-1.77	-5.55	-1.59	2.00	2.00	0.00	
Start 5123.55 hold at 382.67 MD										
400.00	3.65	252.31	399.84	-2.10	-6.60	-1.89	0.00	0.00	0.00	
500.00	3.65	252.31	499.64	-4.04	-12.67	-3.62	0.00	0.00	0.00	
600.00	3.65	252.31	599.43	-5.98	-18.74	-5.36	0.00	0.00	0.00	
700.00	3.65	252.31	699.23	-7.91	-24.81	-7.09	0.00	0.00	0.00	
800.00	3.65	252.31	799.03	-9.85	-30.88	-8.83	0.00	0.00	0.00	
900.00	3.65	252.31	898.82	-11.79	-36.95	-10.57	0.00	0.00	0.00	
1,000.00	3.65	252.31	998.62	-13.72	-43.02	-12.30	0.00	0.00	0.00	
1,100.00	3.65	252.31	1,098.42	-15.66	-49.09	-14.04	0.00	0.00	0.00	
1,200.00	3.65	252.31	1,198.22	-17.59	-55.16	-15.77	0.00	0.00	0.00	
1,300.00	3.65	252.31	1,298.01	-19.53	-61.23	-17.51	0.00	0.00	0.00	
1,400.00	3.65	252.31	1,397.81	-21.47	-67.31	-19.24	0.00	0.00	0.00	
1,500.00	3.65	252.31	1,497.61	-23.40	-73.38	-20.98	0.00	0.00	0.00	
1,600.00	3.65	252.31	1,597.40	-25.34	-79.45	-22.71	0.00	0.00	0.00	
1,700.00	3.65	252.31	1,697.20	-27.27	-85.52	-24.45	0.00	0.00	0.00	
1,800.00	3.65	252.31	1,797.00	-29.21	-91.59	-26.19	0.00	0.00	0.00	
1,900.00	3.65	252.31	1,896.79	-31.15	-97.66	-27.92	0.00	0.00	0.00	
2,000.00	3.65	252.31	1,996.59	-33.08	-103.73	-29.66	0.00	0.00	0.00	
2,100.00	3.65	252.31	2,096.39	-35.02	-109.80	-31.39	0.00	0.00	0.00	
2,200.00	3.65	252.31	2,196.18	-36.96	-115.87	-33.13	0.00	0.00	0.00	
2,300.00	3.65	252.31	2,295.98	-38.89	-121.94	-34.86	0.00	0.00	0.00	
2,400.00	3.65	252.31	2,395.78	-40.83	-128.01	-36.60	0.00	0.00	0.00	
2,500.00	3.65	252.31	2,495.57	-42.76	-134.08	-38.34	0.00	0.00	0.00	
2,600.00	3.65	252.31	2,595.37	-44.70	-140.15	-40.07	0.00	0.00	0.00	
2,700.00	3.65	252.31	2,695.17	-46.64	-146.22	-41.81	0.00	0.00	0.00	
2,800.00	3.65	252.31	2,794.96	-48.57	-152.30	-43.54	0.00	0.00	0.00	
2,900.00	3.65	252.31	2,894.76	-50.51	-158.37	-45.28	0.00	0.00	0.00	
3,000.00	3.65	252.31	2,994.56	-52.44	-164.44	-47.01	0.00	0.00	0.00	
3,100.00	3.65	252.31	3,094.35	-54.38	-170.51	-48.75	0.00	0.00	0.00	
3,200.00	3.65	252.31	3,194.15	-56.32	-176.58	-50.49	0.00	0.00	0.00	
3,300.00	3.65	252.31	3,293.95	-58.25	-182.65	-52.22	0.00	0.00	0.00	
3,400.00	3.65	252.31	3,393.74	-60.19	-188.72	-53.96	0.00	0.00	0.00	
3,500.00	3.65	252.31	3,493.54	-62.13	-194.79	-55.69	0.00	0.00	0.00	
3,600.00	3.65	252.31	3,593.34	-64.06	-200.86	-57.43	0.00	0.00	0.00	
3,700.00	3.65	252.31	3,693.13	-66.00	-206.93	-59.16	0.00	0.00	0.00	
3,800.00	3.65	252.31	3,792.93	-67.93	-213.00	-60.90	0.00	0.00	0.00	
3,900.00	3.65	252.31	3,892.73	-69.87	-219.07	-62.64	0.00	0.00	0.00	
4,000.00	3.65	252.31	3,992.53	-71.81	-225.14	-64.37	0.00	0.00	0.00	
4,100.00	3.65	252.31	4,092.32	-73.74	-231.21	-66.11	0.00	0.00	0.00	
4,200.00	3.65	252.31	4,192.12	-75.68	-237.29	-67.84	0.00	0.00	0.00	
4,300.00	3.65	252.31	4,291.92	-77.62	-243.36	-69.58	0.00	0.00	0.00	
4,400.00	3.65	252.31	4,391.71	-79.55	-249.43	-71.31	0.00	0.00	0.00	
4,500.00	3.65	252.31	4,491.51	-81.49	-255.50	-73.05	0.00	0.00	0.00	
4,600.00	3.65	252.31	4,591.31	-83.42	-261.57	-74.78	0.00	0.00	0.00	
4,700.00	3.65	252.31	4,691.10	-85.36	-267.64	-76.52	0.00	0.00	0.00	
4,800.00	3.65	252.31	4,790.90	-87.30	-273.71	-78.26	0.00	0.00	0.00	
4,900.00	3.65	252.31	4,890.70	-89.23	-279.78	-79.99	0.00	0.00	0.00	
5,000.00	3.65	252.31	4,990.49	-91.17	-285.85	-81.73	0.00	0.00	0.00	

Planning Report

Database:	EDM 5000.16 Single User Db	Local Co-ordinate Reference:	Well RAZOR FED 30K-1906
Company:	FUNDARE RESOURCES OPERATING COMPANY, LLC	TVD Reference:	KB 25' @ 4853.00usft
Project:	WELD COUNTY	MD Reference:	KB 25' @ 4853.00usft
Site:	SEC 30-T10N-R58W	North Reference:	True
Well:	RAZOR FED 30K-1906	Survey Calculation Method:	Minimum Curvature
Wellbore:	OWB		
Design:	PROPOSAL 1		

Planned Survey										
Measured Depth (usft)	Inclination (°)	Azimuth (°)	Vertical Depth (usft)	+N/-S (usft)	+E/-W (usft)	Vertical Section (usft)	Dogleg Rate (°/100ft)	Build Rate (°/100ft)	Turn Rate (°/100ft)	
5,100.00	3.65	252.31	5,090.29	-93.10	-291.92	-83.46	0.00	0.00	0.00	
5,200.00	3.65	252.31	5,190.09	-95.04	-297.99	-85.20	0.00	0.00	0.00	
5,300.00	3.65	252.31	5,289.88	-96.98	-304.06	-86.93	0.00	0.00	0.00	
5,400.00	3.65	252.31	5,389.68	-98.91	-310.13	-88.67	0.00	0.00	0.00	
5,500.00	3.65	252.31	5,489.48	-100.85	-316.20	-90.41	0.00	0.00	0.00	
5,506.22	3.65	252.31	5,495.68	-100.97	-316.58	-90.51	0.00	0.00	0.00	
Start DLS 10.00 TFO 108.22										
5,600.00	8.93	337.87	5,589.01	-95.12	-322.18	-84.48	10.00	5.63	91.23	
5,700.00	18.55	350.15	5,686.05	-72.20	-327.84	-61.39	10.00	9.62	12.29	
5,800.00	28.43	354.13	5,777.66	-32.75	-333.01	-21.79	10.00	9.88	3.98	
5,900.00	38.37	356.17	5,861.04	22.04	-337.53	33.12	10.00	9.94	2.04	
6,000.00	48.33	357.47	5,933.67	90.49	-341.26	101.65	10.00	9.96	1.30	
6,100.00	58.30	358.42	5,993.34	170.53	-344.09	181.74	10.00	9.97	0.95	
6,200.00	68.28	359.18	6,038.23	259.73	-345.93	270.95	10.00	9.98	0.76	
6,300.00	78.26	359.84	6,066.99	355.37	-346.73	366.57	10.00	9.98	0.66	
6,400.00	88.24	0.46	6,078.73	454.55	-346.47	465.69	10.00	9.98	0.62	
6,417.65	90.00	0.56	6,079.00	472.19	-346.31	483.32	10.00	9.98	0.61	
Start 7544.76 hold at 6417.65 MD										
6,500.00	90.00	0.56	6,079.00	554.54	-345.50	565.59	0.00	0.00	0.00	
6,600.00	90.00	0.56	6,079.00	654.54	-344.52	665.50	0.00	0.00	0.00	
6,700.00	90.00	0.56	6,079.00	754.53	-343.53	765.41	0.00	0.00	0.00	
6,800.00	90.00	0.56	6,079.00	854.53	-342.55	865.32	0.00	0.00	0.00	
6,900.00	90.00	0.56	6,079.00	954.52	-341.56	965.23	0.00	0.00	0.00	
7,000.00	90.00	0.56	6,079.00	1,054.52	-340.58	1,065.14	0.00	0.00	0.00	
7,100.00	90.00	0.56	6,079.00	1,154.51	-339.59	1,165.04	0.00	0.00	0.00	
7,200.00	90.00	0.56	6,079.00	1,254.51	-338.61	1,264.95	0.00	0.00	0.00	
7,300.00	90.00	0.56	6,079.00	1,354.50	-337.63	1,364.86	0.00	0.00	0.00	
7,400.00	90.00	0.56	6,079.00	1,454.50	-336.64	1,464.77	0.00	0.00	0.00	
7,500.00	90.00	0.56	6,079.00	1,554.49	-335.66	1,564.68	0.00	0.00	0.00	
7,600.00	90.00	0.56	6,079.00	1,654.49	-334.67	1,664.59	0.00	0.00	0.00	
7,700.00	90.00	0.56	6,079.00	1,754.48	-333.69	1,764.50	0.00	0.00	0.00	
7,800.00	90.00	0.56	6,079.00	1,854.48	-332.70	1,864.41	0.00	0.00	0.00	
7,900.00	90.00	0.56	6,079.00	1,954.47	-331.72	1,964.32	0.00	0.00	0.00	
8,000.00	90.00	0.56	6,079.00	2,054.47	-330.73	2,064.22	0.00	0.00	0.00	
8,100.00	90.00	0.56	6,079.00	2,154.46	-329.75	2,164.13	0.00	0.00	0.00	
8,200.00	90.00	0.56	6,079.00	2,254.46	-328.77	2,264.04	0.00	0.00	0.00	
8,300.00	90.00	0.56	6,079.00	2,354.45	-327.78	2,363.95	0.00	0.00	0.00	
8,400.00	90.00	0.56	6,079.00	2,454.45	-326.80	2,463.86	0.00	0.00	0.00	
8,500.00	90.00	0.56	6,079.00	2,554.44	-325.81	2,563.77	0.00	0.00	0.00	
8,600.00	90.00	0.56	6,079.00	2,654.44	-324.83	2,663.68	0.00	0.00	0.00	
8,700.00	90.00	0.56	6,079.00	2,754.43	-323.84	2,763.59	0.00	0.00	0.00	
8,800.00	90.00	0.56	6,079.00	2,854.43	-322.86	2,863.49	0.00	0.00	0.00	
8,900.00	90.00	0.56	6,079.00	2,954.42	-321.87	2,963.40	0.00	0.00	0.00	
9,000.00	90.00	0.56	6,079.00	3,054.42	-320.89	3,063.31	0.00	0.00	0.00	
9,100.00	90.00	0.56	6,079.00	3,154.41	-319.91	3,163.22	0.00	0.00	0.00	
9,200.00	90.00	0.56	6,079.00	3,254.41	-318.92	3,263.13	0.00	0.00	0.00	
9,300.00	90.00	0.56	6,079.00	3,354.40	-317.94	3,363.04	0.00	0.00	0.00	
9,400.00	90.00	0.56	6,079.00	3,454.40	-316.95	3,462.95	0.00	0.00	0.00	
9,500.00	90.00	0.56	6,079.00	3,554.39	-315.97	3,562.86	0.00	0.00	0.00	
9,600.00	90.00	0.56	6,079.00	3,654.39	-314.98	3,662.77	0.00	0.00	0.00	
9,700.00	90.00	0.56	6,079.00	3,754.39	-314.00	3,762.67	0.00	0.00	0.00	
9,800.00	90.00	0.56	6,079.00	3,854.38	-313.01	3,862.58	0.00	0.00	0.00	
9,900.00	90.00	0.56	6,079.00	3,954.38	-312.03	3,962.49	0.00	0.00	0.00	

Planning Report

Database:	EDM 5000.16 Single User Db	Local Co-ordinate Reference:	Well RAZOR FED 30K-1906
Company:	FUNDARE RESOURCES OPERATING COMPANY, LLC	TVD Reference:	KB 25' @ 4853.00usft
Project:	WELD COUNTY	MD Reference:	KB 25' @ 4853.00usft
Site:	SEC 30-T10N-R58W	North Reference:	True
Well:	RAZOR FED 30K-1906	Survey Calculation Method:	Minimum Curvature
Wellbore:	OWB		
Design:	PROPOSAL 1		

Planned Survey										
Measured Depth (usft)	Inclination (°)	Azimuth (°)	Vertical Depth (usft)	+N/-S (usft)	+E/-W (usft)	Vertical Section (usft)	Dogleg Rate (°/100ft)	Build Rate (°/100ft)	Turn Rate (°/100ft)	
10,000.00	90.00	0.56	6,079.00	4,054.37	-311.05	4,062.40	0.00	0.00	0.00	
10,100.00	90.00	0.56	6,079.00	4,154.37	-310.06	4,162.31	0.00	0.00	0.00	
10,200.00	90.00	0.56	6,079.00	4,254.36	-309.08	4,262.22	0.00	0.00	0.00	
10,300.00	90.00	0.56	6,079.00	4,354.36	-308.09	4,362.13	0.00	0.00	0.00	
10,400.00	90.00	0.56	6,079.00	4,454.35	-307.11	4,462.04	0.00	0.00	0.00	
10,500.00	90.00	0.56	6,079.00	4,554.35	-306.12	4,561.95	0.00	0.00	0.00	
10,600.00	90.00	0.56	6,079.00	4,654.34	-305.14	4,661.85	0.00	0.00	0.00	
10,700.00	90.00	0.56	6,079.00	4,754.34	-304.15	4,761.76	0.00	0.00	0.00	
10,800.00	90.00	0.56	6,079.00	4,854.33	-303.17	4,861.67	0.00	0.00	0.00	
10,900.00	90.00	0.56	6,079.00	4,954.33	-302.19	4,961.58	0.00	0.00	0.00	
11,000.00	90.00	0.56	6,079.00	5,054.32	-301.20	5,061.49	0.00	0.00	0.00	
11,100.00	90.00	0.56	6,079.00	5,154.32	-300.22	5,161.40	0.00	0.00	0.00	
11,200.00	90.00	0.56	6,079.00	5,254.31	-299.23	5,261.31	0.00	0.00	0.00	
11,300.00	90.00	0.56	6,079.00	5,354.31	-298.25	5,361.22	0.00	0.00	0.00	
11,400.00	90.00	0.56	6,079.00	5,454.30	-297.26	5,461.12	0.00	0.00	0.00	
11,500.00	90.00	0.56	6,079.00	5,554.30	-296.28	5,561.03	0.00	0.00	0.00	
11,600.00	90.00	0.56	6,079.00	5,654.29	-295.29	5,660.94	0.00	0.00	0.00	
11,700.00	90.00	0.56	6,079.00	5,754.29	-294.31	5,760.85	0.00	0.00	0.00	
11,800.00	90.00	0.56	6,079.00	5,854.28	-293.33	5,860.76	0.00	0.00	0.00	
11,900.00	90.00	0.56	6,079.00	5,954.28	-292.34	5,960.67	0.00	0.00	0.00	
12,000.00	90.00	0.56	6,079.00	6,054.27	-291.36	6,060.58	0.00	0.00	0.00	
12,100.00	90.00	0.56	6,079.00	6,154.27	-290.37	6,160.49	0.00	0.00	0.00	
12,200.00	90.00	0.56	6,079.00	6,254.26	-289.39	6,260.40	0.00	0.00	0.00	
12,300.00	90.00	0.56	6,079.00	6,354.26	-288.40	6,360.30	0.00	0.00	0.00	
12,400.00	90.00	0.56	6,079.00	6,454.25	-287.42	6,460.21	0.00	0.00	0.00	
12,500.00	90.00	0.56	6,079.00	6,554.25	-286.43	6,560.12	0.00	0.00	0.00	
12,600.00	90.00	0.56	6,079.00	6,654.24	-285.45	6,660.03	0.00	0.00	0.00	
12,700.00	90.00	0.56	6,079.00	6,754.24	-284.47	6,759.94	0.00	0.00	0.00	
12,800.00	90.00	0.56	6,079.00	6,854.23	-283.48	6,859.85	0.00	0.00	0.00	
12,900.00	90.00	0.56	6,079.00	6,954.23	-282.50	6,959.76	0.00	0.00	0.00	
13,000.00	90.00	0.56	6,079.00	7,054.23	-281.51	7,059.67	0.00	0.00	0.00	
13,100.00	90.00	0.56	6,079.00	7,154.22	-280.53	7,159.57	0.00	0.00	0.00	
13,200.00	90.00	0.56	6,079.00	7,254.22	-279.54	7,259.48	0.00	0.00	0.00	
13,300.00	90.00	0.56	6,079.00	7,354.21	-278.56	7,359.39	0.00	0.00	0.00	
13,400.00	90.00	0.56	6,079.00	7,454.21	-277.57	7,459.30	0.00	0.00	0.00	
13,500.00	90.00	0.56	6,079.00	7,554.20	-276.59	7,559.21	0.00	0.00	0.00	
13,600.00	90.00	0.56	6,079.00	7,654.20	-275.61	7,659.12	0.00	0.00	0.00	
13,700.00	90.00	0.56	6,079.00	7,754.19	-274.62	7,759.03	0.00	0.00	0.00	
13,800.00	90.00	0.56	6,079.00	7,854.19	-273.64	7,858.94	0.00	0.00	0.00	
13,900.00	90.00	0.56	6,079.00	7,954.18	-272.65	7,958.85	0.00	0.00	0.00	
13,962.41	90.00	0.56	6,079.00	8,016.58	-272.04	8,021.19	0.00	0.00	0.00	
13,962.83	90.00	0.56	6,079.00	8,017.01	-272.03	8,021.62	2.00	0.00	-2.00	
Start 199.61 hold at 13962.83 MD										
14,000.00	90.00	0.56	6,079.00	8,054.18	-271.67	8,058.75	0.00	0.00	0.00	
14,100.00	90.00	0.56	6,079.00	8,154.17	-270.70	8,158.66	0.00	0.00	0.00	
14,162.44	90.00	0.56	6,079.00	8,216.61	-270.10	8,221.05	0.00	0.00	0.00	
TD at 14162.44										

Planning Report

Database:	EDM 5000.16 Single User Db	Local Co-ordinate Reference:	Well RAZOR FED 30K-1906
Company:	FUNDARE RESOURCES OPERATING COMPANY, LLC	TVD Reference:	KB 25' @ 4853.00usft
Project:	WELD COUNTY	MD Reference:	KB 25' @ 4853.00usft
Site:	SEC 30-T10N-R58W	North Reference:	True
Well:	RAZOR FED 30K-1906	Survey Calculation Method:	Minimum Curvature
Wellbore:	OWB		
Design:	PROPOSAL 1		

Design Targets									
Target Name - hit/miss target - Shape	Dip Angle (°)	Dip Dir. (°)	TVD (usft)	+N/-S (usft)	+E/-W (usft)	Northing (usft)	Easting (usft)	Latitude	Longitude
BPZ-RAZOR FED 30K-1 - plan hits target center - Point	0.00	0.00	6,079.00	8,016.58	-272.04	1,549,261.39	3,439,743.60	40.830286°N	103.910916°W
LP-RAZOR FED 30K-19 - plan hits target center - Point	0.00	0.00	6,079.00	472.19	-346.31	1,541,716.88	3,439,804.62	40.809579°N	103.911184°W
PBHL-RAZOR FED 30K - plan hits target center - Point	0.00	0.00	6,079.00	8,216.61	-270.10	1,549,461.42	3,439,741.96	40.830835°N	103.910909°W

Plan Annotations					
Measured Depth (usft)	Vertical Depth (usft)	Local Coordinates		Comment	
		+N/-S (usft)	+E/-W (usft)		
200.00	200.00	0.00	0.00	Start Build 2.00	
382.67	382.54	-1.77	-5.55	Start 5123.55 hold at 382.67 MD	
5,506.22	5,495.68	-100.97	-316.58	Start DLS 10.00 TFO 108.22	
6,417.65	6,079.00	472.19	-346.31	Start 7544.76 hold at 6417.65 MD	
13,962.83	6,079.00	8,017.01	-272.03	Start 199.61 hold at 13962.83 MD	
14,162.44	6,079.00	8,216.61	-270.10	TD at 14162.44	