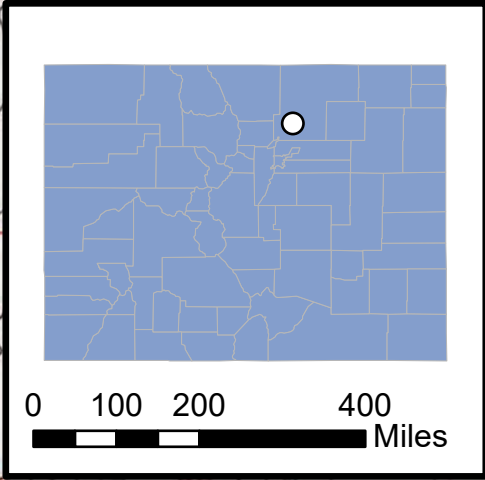
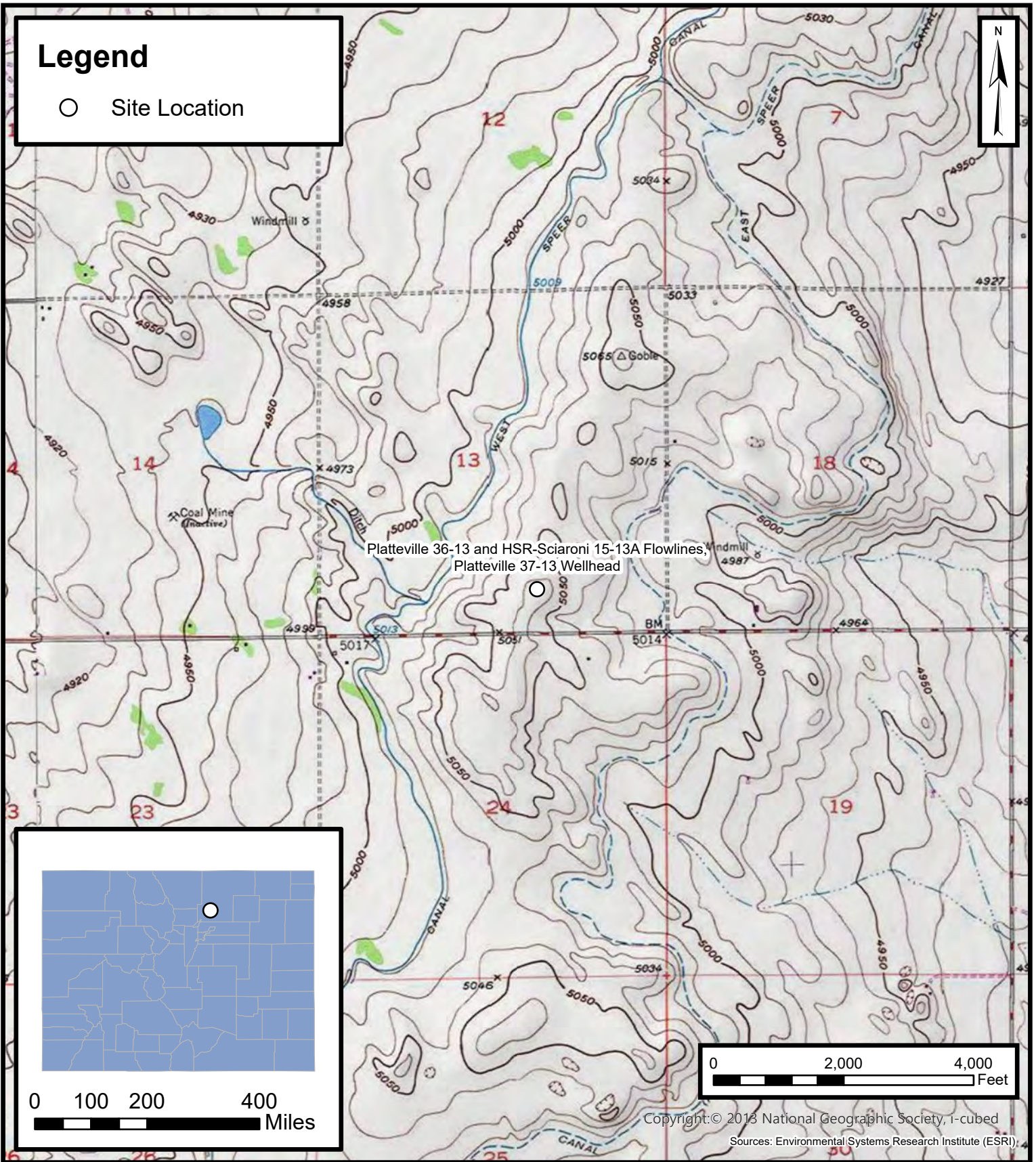


Legend

○ Site Location



0 100 200 400 Miles

0 2,000 4,000 Feet

Copyright: © 2013 National Geographic Society, i-cubed
Sources: Environmental Systems Research Institute (ESRI)



Site Location Map

Platteville 36-13 and HSR-Sciaroni 15-13A Flowlines,
Platteville 37-13 Wellhead
Kerr-McGee Oil & Gas Onshore, LP
SWSE SEC 13-T3N-R66W
Weld County, CO

Project Number: 09A1417299

FIGURE

1