

Well Latitude / Longitude:

40.577963/-104.57627

Flowline Point A (Lat / Long):

40.577960/-104.576242

Flowline Point B (Lat / Long):

40.578034/-104.575224

Flowline Length (ft):

291

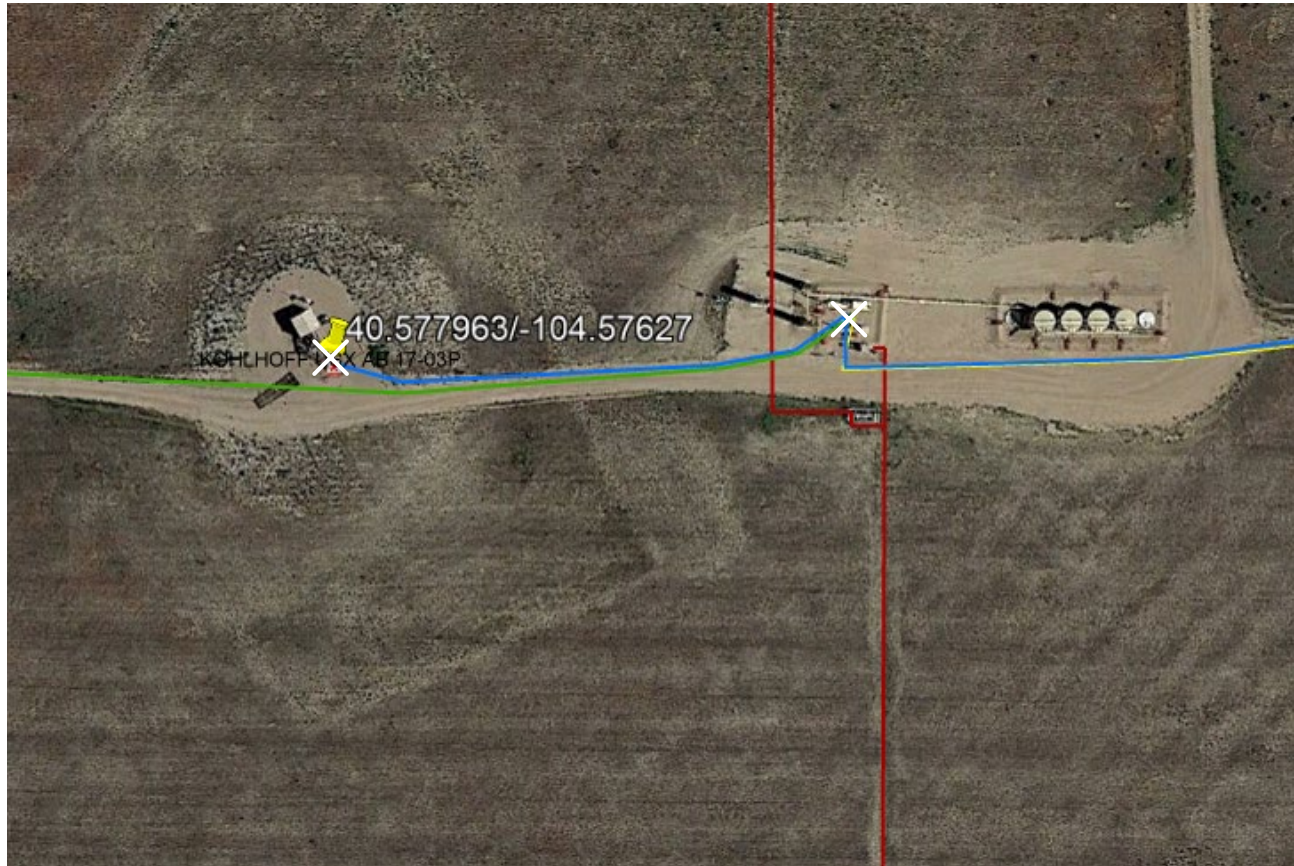
Flowline Abandonment Type:

Abandon in place due to common trench with active flowline

Comments:

X = Proposed Soil Sample Location

**□ = Area of Conflict, Proposed
Flowline Abandon-in-Place Area**



Map Created Date:

5-15-2023

Well Name:

KOHLHOFF USX AB17-03P

Map Created By:

Jeff White

Well API:

05-123-31167

the
human  **energy**
company™