

Inspection Photos

Location: Verdad Resources LLC / Shull 1-35-9-60

Location ID: 432694



Photo 1 – Unused equipment stored on location

Photo 2 – Visible leak from fittings/gauge on tank

Inspection Photos
Location: Verdad Resources LLC / Shull 1-35-9-60
Location ID: 432694



Photo 3 – Earthen berm around pad – inadequate

Photo 4 – Earthen berm

Inspection Photos
Location: Verdad Resources LLC / Shull 1-35-9-60
Location ID: 432694



Photo 5 – Soil staining present

Photo 6 – Inadequate signage at wellheads

Inspection Photos

Location: Verdad Resources LLC / Shull 1-35-9-60

Location ID: 432694



Photo 7 – Unused equipment stored on location

Photo 8 – Soil staining present

Inspection Photos

Location: Verdad Resources LLC / Shull 1-35-9-60

Location ID: 432694



Photo 9 – Soil staining present



Photo 10 – Unused equipment – (2) 400-bbl crude oil above-ground storage tanks (ASTs) stored on location with no out of service locks/tags (OOSLAT)

Inspection Photos

Location: Verdad Resources LLC / Shull 1-35-9-60

Location ID: 432694



Photo 11 – Stained soil observed along locations earthen secondary containment berm - staining appears to be from previously observed impacts as noted Inspection Doc #708200264.



Photo 12 – Stained soil observed along locations earthen secondary containment berm - staining appears to be from previously observed impacts as noted Inspection Doc #708200264.

Inspection Photos

Location: Verdad Resources LLC / Shull 1-35-9-60

Location ID: 432694



Photo 13 – Soil staining present & no OOSLAT on (2) 400-bbl crude oil ASTs



Photo 14 – Stained soil observed along locations earthen secondary containment berm - staining appears to be from previously observed impacts as noted Inspection Doc #708200264.

Inspection Photos

Location: Verdad Resources LLC / Shull 1-35-9-60

Location ID: 432694



Photo 15 – Stained soil observed along locations earthen secondary containment berm - staining appears to be from previously observed impacts as noted Inspection Doc #708200264.

Photo 16 – Stained soil observed along locations earthen secondary containment berm - staining appears to be from previously observed impacts as noted Inspection Doc #708200264.

Inspection Photos

Location: Verdad Resources LLC / Shull 1-35-9-60

Location ID: 432694



Photo 17 – Stained soil observed along locations earthen secondary containment berm - staining appears to be from previously observed impacts as noted Inspection Doc #708200264.



Photo 18 – Standing water in secondary containment for crude oil and produced water ASTs & corroded tank bottoms observed on all crude oil ASTs

Inspection Photos
Location: Verdad Resources LLC / Shull 1-35-9-60
Location ID: 432694



Photo 19 – Standing water in produced water & crude oil AST secondary containment

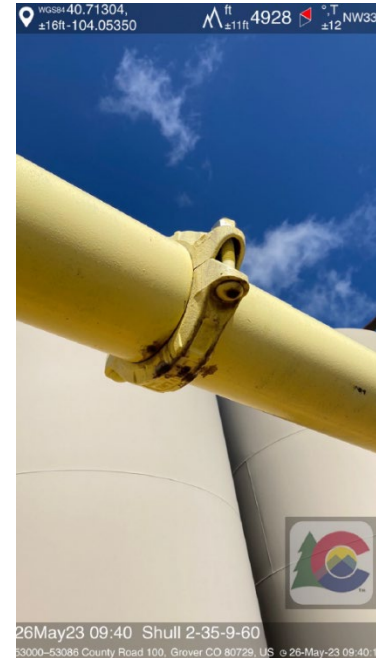


Photo 20 – Location of audible and olfactory leak on line running to ECD

Inspection Photos

Location: Verdad Resources LLC / Shull 1-35-9-60

Location ID: 432694



Photo 21 – Location of audible and olfactory leak (coupling on red elbow)

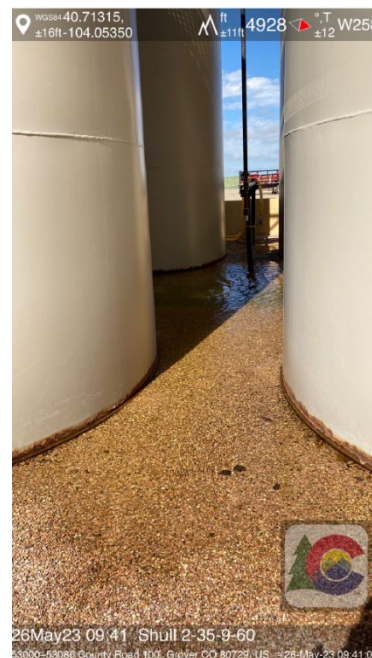


Photo 22 – Standing water in secondary containment for crude oil and produced water ASTs & corroded tank bottoms observed on all crude oil ASTs

Inspection Photos
Location: Verdad Resources LLC / Shull 1-35-9-60
Location ID: 432694



Photo 23 – Signage around tank battery. Note: Former Operator (Carrizo (Niobrara) LLC listed along with current Operator (Verdad Resources).

Photo 24 – Unused equipment store on location

Inspection Photos
Location: Verdad Resources LLC / Shull 1-35-9-60
Location ID: 432694



Photo 25 – Lease road signage. Note: Weeds, Location ID not listed, and Former Operator (Carrizo (Niobrara) LLC listed along with current Operator (Verdad Resources).

Photo 26 – Lease road signage. Note: Weeds, Location ID not listed, and Former Operator (Carrizo (Niobrara) LLC listed along with current Operator (Verdad Resources).

Inspection Photos
Location: Verdad Resources LLC / Shull 1-35-9-60
Location ID: 432694



Photo 27 – Hydrocarbons present on compressor skid

Photo 28 – Stained soil in compressor housing