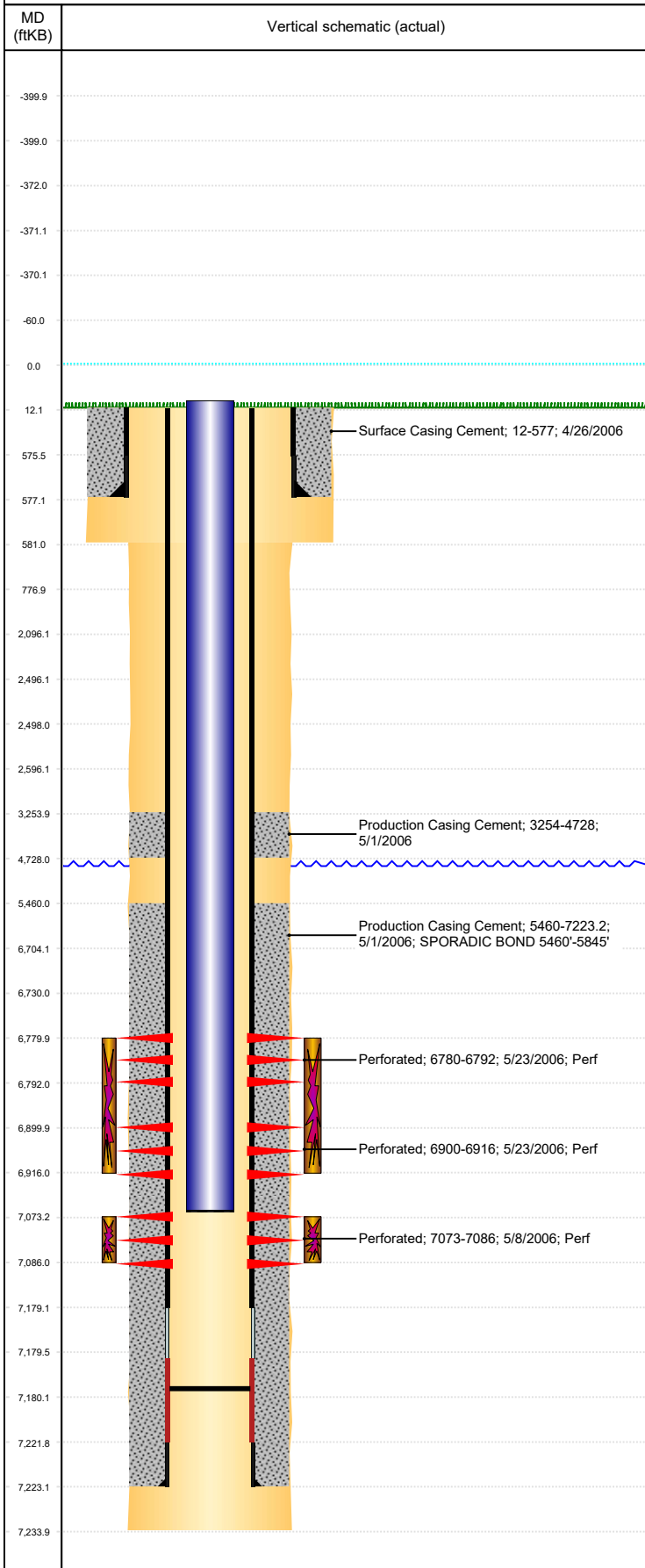




P&A Wellbore For State

Well Name: ERICKSON A08-08

Land, Original Hole, 5/31/2023 3:05:51 PM



Well Header									
Surface UWI 0512323752			Business Unit Rockies			Gov Auth Dist		Prod Tree Loc Land	
Orig. KB to Gnd (ft) 12.00		Original Spud Date 4/26/2006		Abandon Date		Well Sub-Status PR			High... N
Comment SURFACE CSG SET DEPTH DISCREP: DRL RPT @ 577', ST COMP RPT CHANGED TO 572', REASON UNKNOWN POOR TO NO CMT BOND 4700-6250									
Surface Location (Congressional)									
Qtr 3 SE	Qtr 4 NE	Section 8	Twnshp 6	Twnsh... N	Range 64	Rng E/... W	Latitude (°) 40.50251179 3	Longitude (°) -104.566367334	
Wellbore Sections									
Section Des			Hole Size (in)			Act Top (ftKB)		Act Btm (ftKB)	
SURFACE			12 1/4			12.0		581.0	
PRODUCTION			7 7/8			581.0		7,234.0	
Casing Strings									
Csg Des			Run Date		OD (in)	Wt/Len (lb/ft)	Grade	Top Depth (MD) (ftKB)	Set Depth (MD) (ftKB)
Surface			4/26/2006		8 5/8	24.00	J-55	12	577
Production Casing			5/1/2006		4 1/2	11.60	M-80	12	7223.2
Cement									
Des					Start Date		Top (ftKB)		Btm (ftKB)
Surface Casing Cement					4/26/2006		12.0		577.0
Production Casing Cement					5/1/2006		3,254.0		4,728.0
Production Casing Cement					5/1/2006		5,460.0		7,223.2
Zone Statuses									
Zone Name		Status Date		Status	Fluid Type	Job			Prod Method
CODELL		5/25/2006		PR	Water Water	DRILLING/COMPLETION - ORIGINAL, 4/26/2006...			Flowing Flowing
CODELL		4/14/2010		PR					
NIOBRARA		4/14/2010		PR					
NIOBRARA		3/30/2017		PR					
Perforation Data									
Linked Zone			Explosive Type	Entered Shot Total	Top (ftKB)		Btm (ftKB)		Date
NIOBRARA, Original Hole				72	6,780.0		6,792.0		5/23/2006
NIOBRARA, Original Hole				96	6,900.0		6,916.0		5/23/2006
CODELL, Original Hole				52	7,073.0		7,086.0		5/8/2006
Stimulation Intervals									
Zone				Start Date		Top (ftKB)		Btm (ftKB)	
NIOBRARA, Original Hole				5/23/2006		6,780.0		6,916.0	
CODELL, Original Hole				5/23/2006		7,073.0		7,086.0	
Other In Hole									
Run Date		Des			Make		OD (in)	Top (ftKB)	Btm (ftKB)
Logs									
Date		Type					Depth Top (MD) (ftKB)		Btm (ftKB)
5/1/2006		COMPENSATED DENSITY					2,800		7,130.0
5/1/2006		INDUCTION					577		7,230.0
5/8/2006		CBL/CCL/GR					3,145		5,000.0
5/8/2006		CBL/CCL/GR					4,990		7,152.0
Plug Back Total Depths									
Date		Type			Com				PBTD (ftKB)
5/8/2006		FILL			DEPTH LOGGER ON CBL				7,154
9/8/2006		FILL			CLEAN OUT				7,180