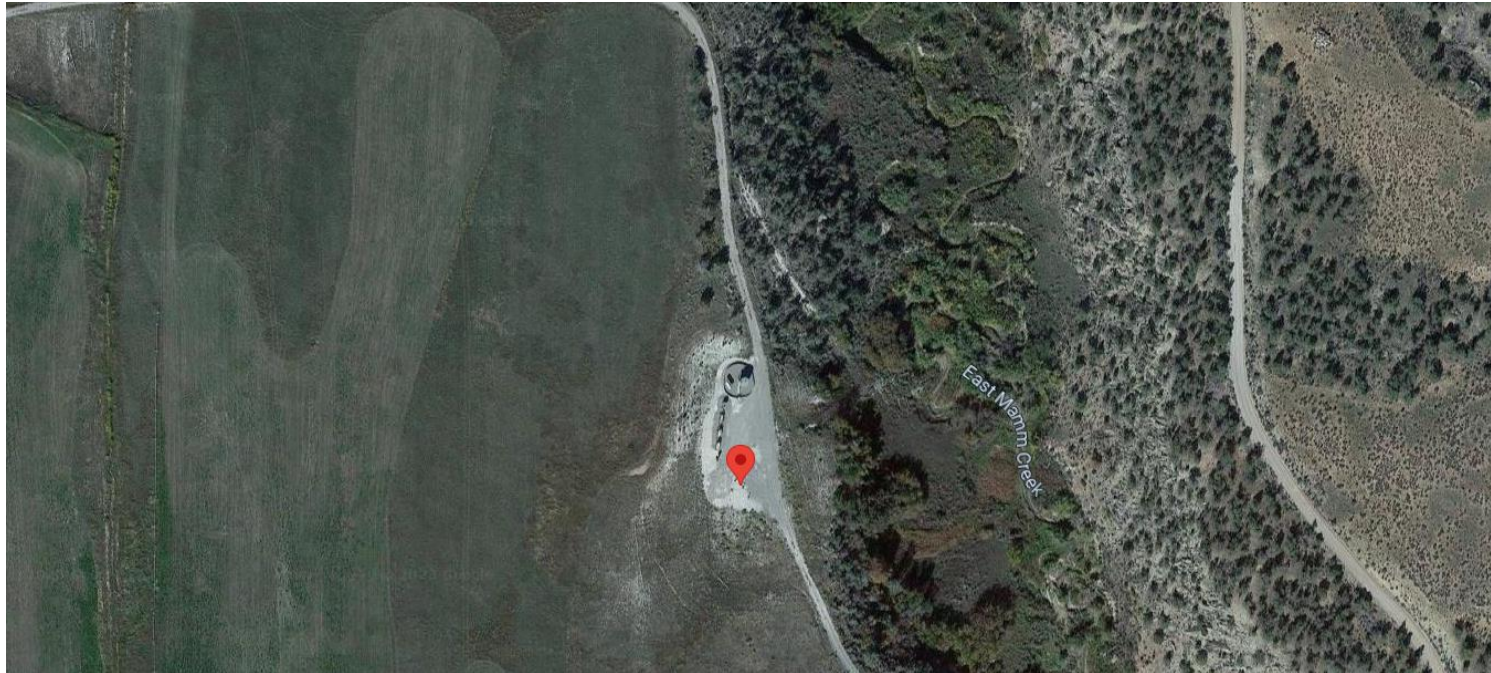


## Storm Water Management and Erosion control

Location Name: CAERUS PICEANCE LLC A17E

Location #: 334953



Location Overview: Location is approximately 75 yards from East Mamm Creek

Section/Township/Range: 17 7S92W



**COLORADO**  
Oil & Gas Conservation  
Commission  
Department of Natural Resources

## Storm water Management and Erosion control

Location Name: CAERUS PICEANCE LLC A17E

Location #: 334953



North West corner of location.



North East corner of location.



South West corner of location.



South East corner of location.



**COLORADO**  
Oil & Gas Conservation  
Commission  
Department of Natural Resources