

Well Latitude / Longitude:

40.429765/-104.467816

Flowline Point A (Lat / Long):

40.429762/-104.467791

Flowline Point B (Lat / Long):

40.433920/-104.465838

Flowline Length (ft):

1610

Flowline Abandonment Type:

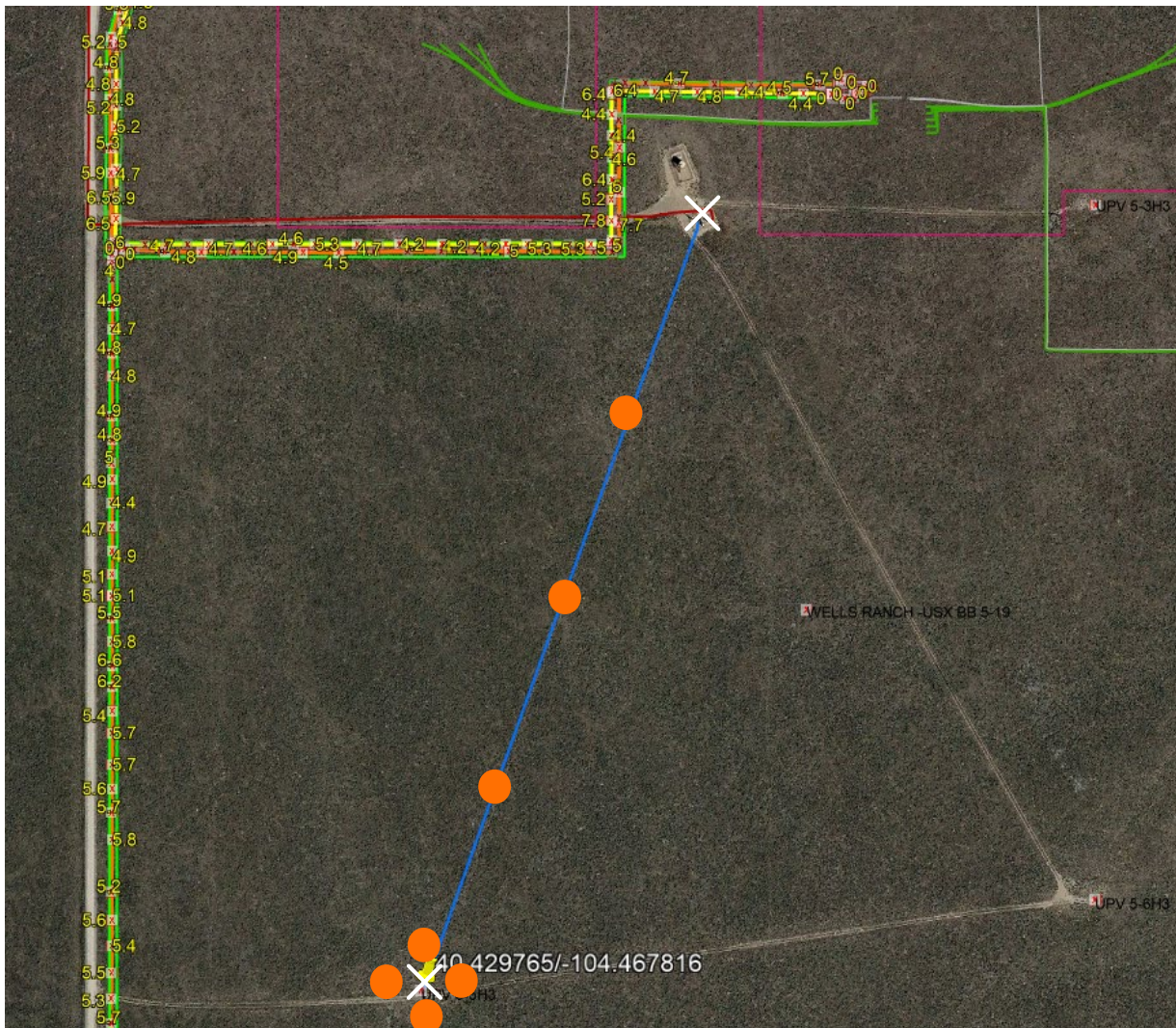
Full removal

Comments:

X = Proposed Soil Sample Location

□ = Area of Conflict, Proposed
Flowline Abandon-in-Place Area

● = Field Screening Location



Map Created Date:

5-15-2023

Well Name:

UPV 05-05H3

Map Created By:

Jeff White

Well API:

05-123-18860

the
human  **energy**
company™