

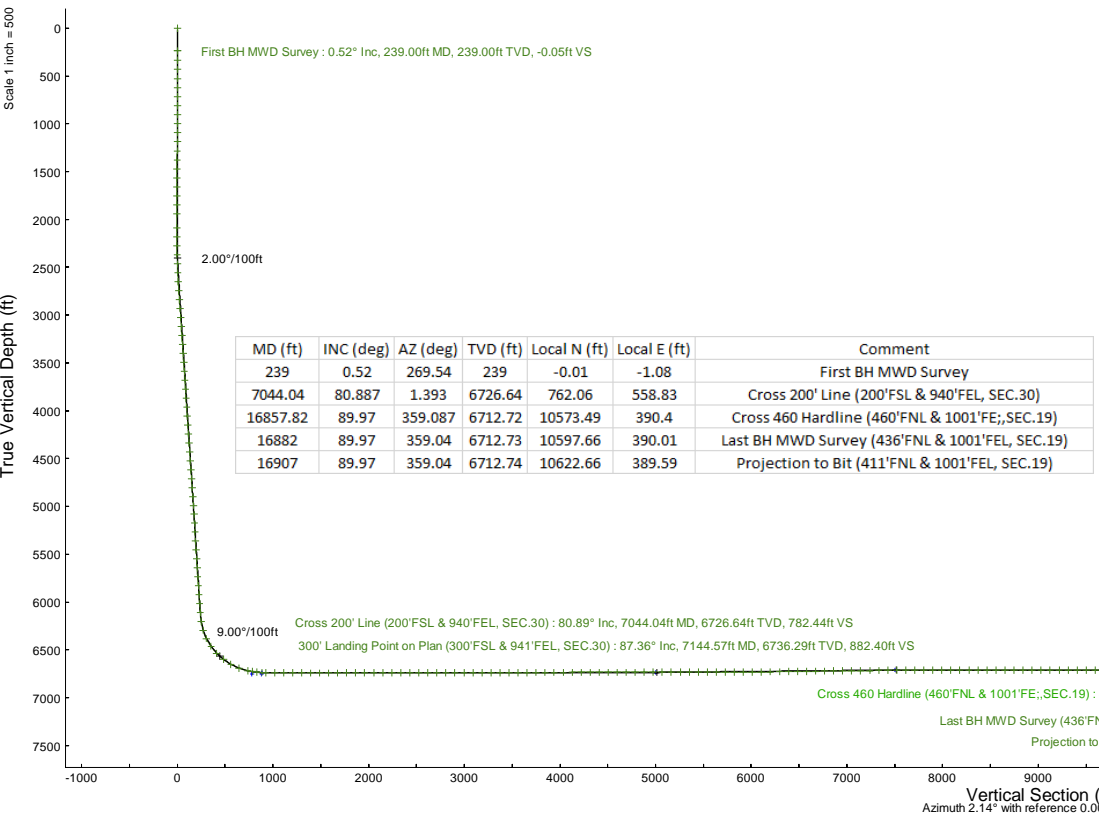
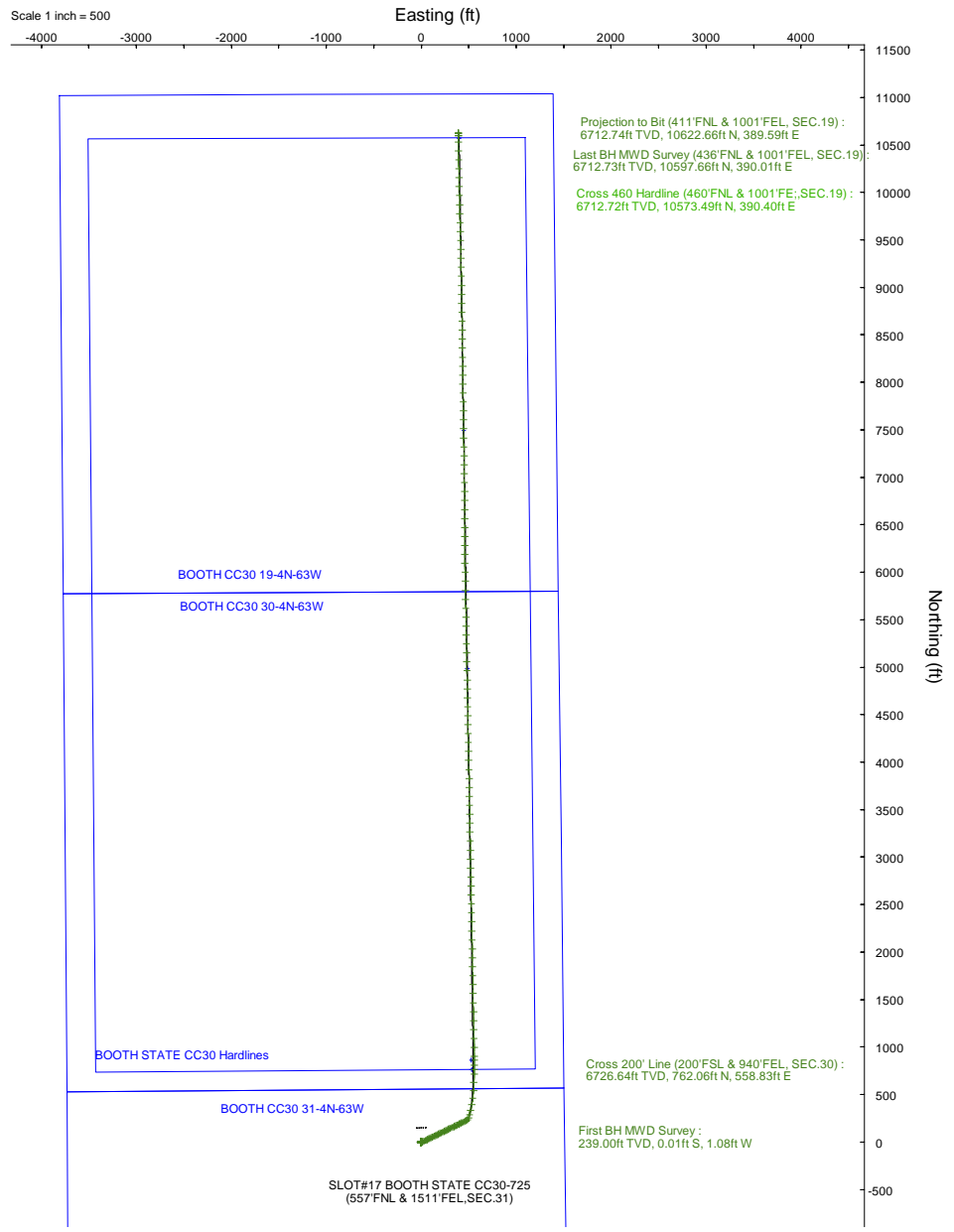
# NOBLE ENERGY, INC

Location: COLORADO Slot: SLOT#17 BOOTH STATE CC30-725 (557'FNL & 1511'FEL,SEC.31)  
 Field: WELD COUNTY (NOBLE NAD 83 GRID) Well: BOOTH STATE CC30-725  
 Facility: SEC.31-T04N-R63W Wellbore: BOOTH STATE CC30-725 PWB

<b>Plot reference wellpath is BOOTH STATE CC30-725 (REV-D.0) PWP</b>		Grid System: NAD83 / Lambert Colorado SP, Northern Zone (501), US feet
True vertical depths are referenced to (4787'GL+30'KB @ 4817'RKB) (RKB)		North Reference: Grid north
Reference wellpath measured depths are referenced to (4787'GL+30'KB @ 4817'RKB) (RKB)		Scale: True distance
(4787'GL+30'KB @ 4817'RKB) (RKB) to Mean Sea Level: 4817 feet		Coordinates are in feet referenced to Slot
Mean Sea Level to Ground level (At Slot: SLOT#17 BOOTH STATE CC30-725 (557'FNL & 1511'FEL,SEC.31)): 0 feet		Depths are in feet
Offset wellpath MDs are referenced to each path's default MD datum		Created by: matsam01 on 2023-04-21; Database: WA_Deriver

### Location Information

Facility Name			Grid East (US ft)	Grid North (US ft)	Latitude	Longitude
SEC.31-T04N-R63W			3282901.810	1344633.967	40°16'29.9280"N	104°29'9.8880"W
Slot	Local N (ft)	Local E (ft)	Grid East (US ft)	Grid North (US ft)	Latitude	Longitude
SLOT#17 BOOTH STATE CC30-725 (557'FNL & 1511'FEL,SEC.31)	-129.48	2683.21	3285584.903	1344504.495	40°16'28.3440"N	104°28'35.2920"W
(4787'GL+30'KB @ 4817'RKB) (RKB) to Ground level (At Slot: SLOT#17 BOOTH STATE CC30-725 (557'FNL & 1511'FEL,SEC.31))					4817ft	
Mean Sea Level to Ground level (At Slot: SLOT#17 BOOTH STATE CC30-725 (557'FNL & 1511'FEL,SEC.31))					0ft	
(4787'GL+30'KB @ 4817'RKB) (RKB) to Mean Sea Level					4817ft	





# Actual Wellpath Report

BOOTH STATE CC30-725 AWP  
Page 1 of 9



## REFERENCE WELLPATH IDENTIFICATION

Operator	NOBLE ENERGY, INC	Well	BOOTH STATE CC30-725
Field	WELD COUNTY (NOBLE NAD 83 GRID)	API/Legal	05-123-49272
Facility	SEC.31-T04N-R63W	Wellbore	BOOTH STATE CC30-725 AWB
Slot	SLOT#17 BOOTH STATE CC30-725 (557'FNL & 1511'FEL,SEC.31)		

## REPORT SETUP INFORMATION

Projection System	NAD83 / Lambert Colorado SP, Northern Zone (501), US feet	Software System	WellArchitect® 6.0
North Reference	Grid	User	Martsam01
Scale	0.999957	Report Generated	4/19/2023 at 5:34:29 PM
Convergence at slot	0.66° East	Database	WA_Denver

## WELLPATH LOCATION

	Local coordinates		Grid coordinates		Geographic coordinates	
	North[ft]	East[ft]	Easting[US ft]	Northing[US ft]	Latitude	Longitude
Slot Location	-129.48	2683.21	3285584.90	1344504.50	40.2745400°	-104.4764700°
Facility Reference Pt			3282901.81	1344633.97	40.2749800°	-104.4860800°
Field Reference Pt			3000000.00	4454105.15	48.7761986°	-105.5000000°

## WELLPATH DATUM

Calculation method	Minimum curvature	(4787'GL+30'KB@4817'RKB) (RKB) to Facility Vertical Datum	4817.00ft
Horizontal Reference Pt	Slot	(4787'GL+30'KB@4817'RKB) (RKB) to Mean Sea Level	4817.00ft
Vertical Reference Pt	(4787'GL+30'KB@4817'RKB) (RKB)	(4787'GL+30'KB@4817'RKB) (RKB) to Ground Level at Slot (SLOT#17 BOOTH STATE CC30-725 (557'FNL & 1511'FEL,SEC.31))	4817.00ft
MD Reference Pt	(4787'GL+30'KB@4817'RKB) (RKB)	Section Origin	N 0.00, E 0.00 ft
Field Vertical Reference	Mean Sea Level	Section Azimuth	2.14°

**REFERENCE WELLPATH IDENTIFICATION**

Operator	NOBLE ENERGY, INC	Well	BOOTH STATE CC30-725
Field	WELD COUNTY (NOBLE NAD 83 GRID)	API/Legal	05-123-49272
Facility	SEC.31-T04N-R63W	Wellbore	BOOTH STATE CC30-725 AWB
Slot	SLOT#17 BOOTH STATE CC30-725 (557'FNL & 1511'FEL,SEC.31)		

**WELLPATH DATA (181 stations)**

MD [ft]	Inclination [°]	Azimuth [°]	TVD [ft]	Vert Sect [ft]	North [ft]	East [ft]	Latitude	Longitude	DLS [°/100ft]	Comments
0.00	0.000	269.540	0.00	0.00	0.00	0.00	40.2745400	-104.4764700	0.00	
239.00	0.520	269.540	239.00	-0.05	-0.01	-1.08	40.2745400	-104.4764739	0.22	First BH MWD Survey
338.00	0.360	272.520	337.99	-0.07	0.00	-1.84	40.2745401	-104.4764766	0.16	
433.00	0.240	309.990	432.99	0.06	0.14	-2.30	40.2745405	-104.4764782	0.24	
527.00	0.370	295.400	526.99	0.30	0.40	-2.72	40.2745412	-104.4764797	0.16	
622.00	0.190	315.030	621.99	0.53	0.64	-3.11	40.2745419	-104.4764811	0.21	
716.00	0.230	340.660	715.99	0.81	0.93	-3.28	40.2745427	-104.4764817	0.11	
811.00	0.210	337.650	810.99	1.14	1.27	-3.41	40.2745436	-104.4764822	0.02	
905.00	0.150	265.470	904.99	1.29	1.42	-3.60	40.2745440	-104.4764828	0.23	
1000.00	0.220	183.610	999.99	1.09	1.23	-3.73	40.2745435	-104.4764833	0.26	
1094.00	0.370	207.650	1093.99	0.63	0.78	-3.89	40.2745423	-104.4764839	0.20	
1189.00	0.590	190.880	1188.98	-0.13	0.03	-4.12	40.2745402	-104.4764848	0.27	
1283.00	0.660	186.720	1282.98	-1.14	-0.98	-4.28	40.2745374	-104.4764854	0.09	
1378.00	0.630	182.550	1377.97	-2.21	-2.05	-4.36	40.2745345	-104.4764857	0.06	
1472.00	0.540	179.110	1471.97	-3.17	-3.01	-4.38	40.2745319	-104.4764858	0.10	
1566.00	0.530	183.140	1565.96	-4.05	-3.89	-4.40	40.2745295	-104.4764859	0.04	
1661.00	0.420	156.880	1660.96	-4.80	-4.65	-4.28	40.2745274	-104.4764855	0.25	
1756.00	0.460	134.000	1755.96	-5.37	-5.23	-3.87	40.2745258	-104.4764841	0.19	
1850.00	0.380	135.040	1849.95	-5.84	-5.71	-3.38	40.2745244	-104.4764824	0.09	
1945.00	0.350	198.190	1944.95	-6.33	-6.21	-3.25	40.2745231	-104.4764819	0.40	
2089.00	0.040	299.910	2088.95	-6.73	-6.60	-3.43	40.2745220	-104.4764826	0.25	
2184.00	1.420	68.810	2183.94	-6.25	-6.16	-2.36	40.2745232	-104.4764787	1.52	
2278.00	3.080	66.010	2277.87	-4.67	-4.71	1.03	40.2745270	-104.4764665	1.77	
2373.00	2.910	65.240	2372.74	-2.46	-2.67	5.55	40.2745325	-104.4764502	0.18	
2467.00	4.470	64.810	2466.54	0.30	-0.11	11.04	40.2745394	-104.4764305	1.66	
2561.00	6.330	64.440	2560.12	4.40	3.69	19.03	40.2745495	-104.4764017	1.98	
2655.00	8.110	63.850	2653.37	9.95	8.85	29.65	40.2745633	-104.4763634	1.90	
2750.00	8.260	63.620	2747.40	16.38	14.83	41.78	40.2745794	-104.4763197	0.16	
2844.00	8.230	64.120	2840.43	22.77	20.77	53.88	40.2745953	-104.4762760	0.08	
2939.00	8.340	63.720	2934.44	29.24	26.79	66.18	40.2746114	-104.4762317	0.13	
3033.00	8.130	64.700	3027.47	35.55	32.64	78.30	40.2746271	-104.4761881	0.27	
3127.00	8.200	64.150	3120.52	41.76	38.41	90.34	40.2746426	-104.4761447	0.11	
3222.00	8.030	64.420	3214.56	48.03	44.23	102.43	40.2746581	-104.4761011	0.18	
3316.00	8.010	64.380	3307.65	54.13	49.89	114.25	40.2746733	-104.4760585	0.02	
3411.00	8.050	64.280	3401.71	60.33	55.64	126.21	40.2746887	-104.4760154	0.04	
3505.00	8.070	62.990	3494.79	66.62	61.50	138.02	40.2747044	-104.4759729	0.19	
3600.00	8.130	64.080	3588.84	73.03	67.46	150.00	40.2747204	-104.4759297	0.17	
3694.00	8.110	64.250	3681.90	79.26	73.25	161.95	40.2747359	-104.4758866	0.03	
3788.00	8.150	64.340	3774.95	85.47	79.01	173.93	40.2747514	-104.4758434	0.04	
3882.00	8.120	64.260	3868.00	91.68	84.78	185.92	40.2747668	-104.4758003	0.03	
3977.00	8.210	64.080	3962.04	98.01	90.66	198.06	40.2747826	-104.4757565	0.10	
4071.00	8.120	64.070	4055.09	104.29	96.50	210.07	40.2747982	-104.4757132	0.10	
4166.00	8.140	63.880	4149.13	110.63	102.39	222.14	40.2748140	-104.4756697	0.04	
4260.00	8.200	63.840	4242.18	116.96	108.28	234.13	40.2748298	-104.4756265	0.06	
4354.00	8.160	63.880	4335.22	123.30	114.17	246.14	40.2748456	-104.4755832	0.04	

**REFERENCE WELLPATH IDENTIFICATION**

Operator	NOBLE ENERGY, INC	Well	BOOTH STATE CC30-725
Field	WELD COUNTY (NOBLE NAD 83 GRID)	API/Legal	05-123-49272
Facility	SEC.31-T04N-R63W	Wellbore	BOOTH STATE CC30-725 AWB
Slot	SLOT#17 BOOTH STATE CC30-725 (557'FNL & 1511'FEL,SEC.31)		

**WELLPATH DATA (181 stations) † = interpolated, ‡ = extrapolated station**

MD [ft]	Inclination [°]	Azimuth [°]	TVD [ft]	Vert Sect [ft]	North [ft]	East [ft]	Latitude	Longitude	DLS [°/100ft]	Comments
4449.00	8.090	63.450	4429.27	129.70	120.12	258.17	40.2748615	-104.4755399	0.10	
4543.00	8.080	64.190	4522.34	135.97	125.96	270.04	40.2748772	-104.4754971	0.11	
4638.00	8.070	63.660	4616.39	142.28	131.82	282.02	40.2748929	-104.4754539	0.08	
4732.00	8.200	63.920	4709.45	148.60	137.70	293.96	40.2749086	-104.4754109	0.14	
4826.00	8.160	63.730	4802.49	154.95	143.60	305.96	40.2749244	-104.4753676	0.05	
4921.00	8.120	64.350	4896.53	161.28	149.48	318.05	40.2749402	-104.4753241	0.10	
5015.00	8.190	63.970	4989.58	167.54	155.30	330.06	40.2749558	-104.4752808	0.09	
5109.00	8.040	64.030	5082.64	173.80	161.11	341.98	40.2749714	-104.4752378	0.16	
5204.00	7.660	64.830	5176.75	179.84	166.72	353.68	40.2749864	-104.4751957	0.42	
5298.00	7.490	64.790	5269.93	185.53	171.99	364.90	40.2750005	-104.4751553	0.18	
5392.00	7.110	64.640	5363.17	191.03	177.09	375.70	40.2750142	-104.4751164	0.40	
5487.00	6.640	64.170	5457.49	196.32	182.00	385.95	40.2750273	-104.4750794	0.50	
5581.00	7.210	64.650	5550.80	201.59	186.90	396.18	40.2750404	-104.4750426	0.61	
5675.00	7.950	64.430	5643.98	207.34	192.23	407.37	40.2750547	-104.4750022	0.79	
5770.00	8.290	64.680	5738.03	213.55	197.99	419.49	40.2750701	-104.4749586	0.36	
5864.00	8.670	65.310	5831.00	219.88	203.85	432.05	40.2750858	-104.4749133	0.42	
5959.00	8.760	64.780	5924.90	226.43	209.92	445.10	40.2751021	-104.4748663	0.13	
6053.00	8.730	65.190	6017.81	232.96	215.97	458.05	40.2751183	-104.4748196	0.07	
6148.00	9.100	64.520	6111.66	239.71	222.22	471.38	40.2751350	-104.4747716	0.40	
6242.00	11.340	41.030	6204.20	250.35	232.40	484.16	40.2751625	-104.4747254	4.98	
6336.00	17.820	25.000	6295.16	270.83	252.43	496.33	40.2752171	-104.4746810	8.06	
6430.00	26.920	15.630	6382.02	304.86	286.04	508.17	40.2753090	-104.4746371	10.37	
6524.00	35.050	12.410	6462.55	352.20	332.98	519.72	40.2754375	-104.4745938	8.82	
6619.00	44.490	10.490	6535.49	412.11	392.49	531.67	40.2756004	-104.4745485	10.02	
6713.00	51.410	7.360	6598.42	481.38	461.40	542.39	40.2757892	-104.4745072	7.76	
6808.00	60.770	3.780	6651.37	559.98	539.78	549.89	40.2760041	-104.4744771	10.33	
6902.00	69.790	1.760	6690.64	645.27	624.97	553.96	40.2762378	-104.4744590	9.79	
6996.00	77.050	2.430	6717.45	735.30	714.94	557.26	40.2764847	-104.4744434	7.75	
7044.04†	80.887	1.393	6726.64	782.44	762.06	558.83	40.2766140	-104.4744358	8.26	Cross 200' Line (200'FSL & 940'FEL, SEC.30)
7091.00	84.640	0.400	6732.55	829.00	808.63	559.56	40.2767418	-104.4744313	8.26	
7144.57†	87.364	359.475	6736.29	882.40	862.06	559.50	40.2768884	-104.4744293	5.37	300' Landing Point on Plan (300'FSL & 941'FEL, SEC.30)
7185.00	89.420	358.780	6737.42	922.75	902.47	558.89	40.2769994	-104.4744298	5.37	
7279.00	89.600	358.960	6738.23	1016.60	996.45	557.03	40.2772574	-104.4744326	0.27	
7373.00	89.450	358.630	6739.01	1110.43	1090.42	555.05	40.2775154	-104.4744358	0.39	
7467.00	89.450	359.570	6739.91	1204.30	1184.41	553.58	40.2777734	-104.4744372	1.00	
7562.00	89.480	358.420	6740.80	1299.15	1279.39	551.91	40.2780341	-104.4744392	1.21	
7656.00	89.420	358.810	6741.70	1392.96	1373.35	549.64	40.2782921	-104.4744434	0.42	
7750.00	90.180	358.910	6742.03	1486.81	1467.34	547.77	40.2785501	-104.4744463	0.82	
7845.00	90.090	358.760	6741.80	1581.65	1562.32	545.84	40.2788109	-104.4744492	0.18	
7939.00	90.120	358.850	6741.63	1675.49	1656.29	543.88	40.2790689	-104.4744524	0.10	
8034.00	90.150	358.970	6741.41	1770.34	1751.28	542.07	40.2793297	-104.4744549	0.13	
8128.00	90.180	358.910	6741.13	1864.19	1845.26	540.33	40.2795877	-104.4744572	0.07	
8222.00	90.180	359.010	6740.84	1958.04	1939.24	538.63	40.2798457	-104.4744595	0.11	
8317.00	90.220	358.630	6740.51	2052.88	2034.22	536.67	40.2801065	-104.4744625	0.40	
8411.00	90.120	358.870	6740.23	2146.72	2128.20	534.62	40.2803645	-104.4744660	0.28	

**REFERENCE WELLPATH IDENTIFICATION**

Operator	NOBLE ENERGY, INC	Well	BOOTH STATE CC30-725
Field	WELD COUNTY (NOBLE NAD 83 GRID)	API/Legal	05-123-49272
Facility	SEC.31-T04N-R63W	Wellbore	BOOTH STATE CC30-725 AWB
Slot	SLOT#17 BOOTH STATE CC30-725 (557'FNL & 1511'FEL,SEC.31)		

**WELLPATH DATA (181 stations)**

MD [ft]	Inclination [°]	Azimuth [°]	TVD [ft]	Vert Sect [ft]	North [ft]	East [ft]	Latitude	Longitude	DLS [°/100ft]	Comments
8506.00	90.090	358.710	6740.05	2241.56	2223.18	532.61	40.2806252	-104.4744692	0.17	
8600.00	90.150	358.940	6739.86	2335.40	2317.16	530.69	40.2808832	-104.4744723	0.25	
8695.00	90.150	359.250	6739.61	2430.26	2412.15	529.18	40.2811440	-104.4744737	0.33	
8789.00	90.120	358.780	6739.39	2524.12	2506.13	527.57	40.2814020	-104.4744756	0.50	
8884.00	90.220	358.940	6739.11	2618.96	2601.11	525.68	40.2816628	-104.4744784	0.20	
8978.00	90.120	358.960	6738.83	2712.82	2695.10	523.96	40.2819208	-104.4744807	0.11	
9073.00	90.000	358.850	6738.73	2807.67	2790.08	522.14	40.2821816	-104.4744833	0.17	
9167.00	90.180	359.040	6738.58	2901.52	2884.06	520.41	40.2824396	-104.4744856	0.28	
9262.00	90.030	358.780	6738.41	2996.37	2979.05	518.60	40.2827004	-104.4744881	0.32	
9356.00	90.120	359.070	6738.28	3090.22	3073.03	516.84	40.2829584	-104.4744905	0.32	
9450.00	90.060	358.950	6738.14	3184.08	3167.02	515.22	40.2832164	-104.4744925	0.14	
9545.00	90.150	358.960	6737.96	3278.93	3262.00	513.48	40.2834772	-104.4744947	0.10	
9639.00	90.150	358.970	6737.72	3372.79	3355.98	511.78	40.2837352	-104.4744969	0.01	
9734.00	90.150	358.850	6737.47	3467.63	3450.97	509.98	40.2839959	-104.4744995	0.13	
9828.00	90.120	358.930	6737.24	3561.48	3544.95	508.16	40.2842540	-104.4745021	0.09	
9923.00	90.220	359.020	6736.96	3656.34	3639.93	506.46	40.2845147	-104.4745043	0.14	
10017.00	90.120	359.080	6736.68	3750.20	3733.92	504.90	40.2847727	-104.4745059	0.12	
10112.00	90.030	358.790	6736.56	3845.05	3828.90	503.13	40.2850335	-104.4745083	0.32	
10206.00	90.180	358.840	6736.39	3938.89	3922.88	501.19	40.2852915	-104.4745114	0.17	
10301.00	90.150	359.050	6736.11	4033.74	4017.87	499.44	40.2855523	-104.4745137	0.22	
10395.00	90.220	358.940	6735.81	4127.60	4111.85	497.79	40.2858103	-104.4745158	0.14	
10489.00	90.120	358.800	6735.53	4221.45	4205.83	495.94	40.2860683	-104.4745185	0.18	
10584.00	90.180	359.030	6735.28	4316.29	4300.81	494.14	40.2863291	-104.4745210	0.25	
10678.00	90.090	358.860	6735.06	4410.15	4394.80	492.41	40.2865871	-104.4745233	0.20	
10772.00	90.000	358.830	6734.99	4503.99	4488.78	490.51	40.2868451	-104.4745262	0.10	
10867.00	89.970	358.760	6735.01	4598.83	4583.76	488.52	40.2871059	-104.4745294	0.08	
10961.00	90.090	358.970	6734.96	4692.68	4677.74	486.65	40.2873639	-104.4745322	0.26	
11055.00	90.120	358.930	6734.79	4786.53	4771.72	484.93	40.2876219	-104.4745345	0.05	
11149.00	90.030	358.860	6734.67	4880.38	4865.71	483.12	40.2878799	-104.4745371	0.12	
11244.00	90.150	359.090	6734.52	4975.23	4960.69	481.42	40.2881407	-104.4745393	0.27	
11338.00	89.880	358.110	6734.49	5069.05	5054.66	479.12	40.2883987	-104.4745436	1.08	
11432.00	90.180	359.020	6734.44	5162.87	5148.63	476.77	40.2886567	-104.4745481	1.02	
11527.00	90.120	358.950	6734.20	5257.72	5243.62	475.09	40.2889175	-104.4745502	0.10	
11621.00	90.310	359.100	6733.84	5351.58	5337.60	473.49	40.2891755	-104.4745521	0.26	
11716.00	90.030	358.830	6733.56	5446.44	5432.59	471.77	40.2894362	-104.4745543	0.41	
11810.00	90.150	359.040	6733.41	5540.29	5526.57	470.02	40.2896943	-104.4745566	0.26	
11905.00	90.120	358.940	6733.19	5635.14	5621.55	468.35	40.2899550	-104.4745587	0.11	
11999.00	90.250	359.230	6732.89	5729.01	5715.54	466.85	40.2902131	-104.4745602	0.34	
12093.00	90.030	358.850	6732.66	5822.87	5809.53	465.27	40.2904711	-104.4745619	0.47	
12188.00	90.400	359.030	6732.30	5917.72	5904.51	463.51	40.2907318	-104.4745643	0.43	
12282.00	90.220	358.900	6731.79	6011.57	5998.49	461.82	40.2909898	-104.4745665	0.24	
12376.00	90.740	358.940	6731.00	6105.42	6092.47	460.04	40.2912479	-104.4745690	0.55	
12471.00	90.980	359.270	6729.58	6200.28	6187.45	458.56	40.2915086	-104.4745703	0.43	
12566.00	90.740	0.120	6728.15	6295.18	6282.44	458.06	40.2917693	-104.4745682	0.93	
12660.00	90.860	0.150	6726.84	6389.11	6376.43	458.28	40.2920273	-104.4745635	0.13	



# Actual Wellpath Report

BOOTH STATE CC30-725 AWP  
Page 5 of 9


**REFERENCE WELLPATH IDENTIFICATION**

Operator	NOBLE ENERGY, INC	Well	BOOTH STATE CC30-725
Field	WELD COUNTY (NOBLE NAD 83 GRID)	API/Legal	05-123-49272
Facility	SEC.31-T04N-R63W	Wellbore	BOOTH STATE CC30-725 AWB
Slot	SLOT#17 BOOTH STATE CC30-725 (557'FNL & 1511'FEL,SEC.31)		

**WELLPATH DATA (181 stations)**

MD [ft]	Inclination [°]	Azimuth [°]	TVD [ft]	Vert Sect [ft]	North [ft]	East [ft]	Latitude	Longitude	DLS [°/100ft]	Comments
12755.00	90.740	359.990	6725.51	6484.04	6471.42	458.39	40.2922880	-104.4745592	0.21	
12849.00	90.830	0.270	6724.23	6577.97	6565.41	458.61	40.2925460	-104.4745545	0.31	
12943.00	90.650	359.960	6723.01	6671.91	6659.40	458.79	40.2928040	-104.4745499	0.38	
13038.00	90.650	359.040	6721.93	6766.80	6754.39	457.97	40.2930647	-104.4745490	0.97	
13132.00	90.620	358.860	6720.89	6860.65	6848.37	456.24	40.2933227	-104.4745512	0.19	
13226.00	90.580	358.920	6719.91	6954.49	6942.35	454.42	40.2935807	-104.4745539	0.08	
13321.00	90.830	359.210	6718.74	7049.35	7037.33	452.87	40.2938415	-104.4745555	0.40	
13416.00	90.740	359.100	6717.44	7144.21	7132.31	451.47	40.2941022	-104.4745566	0.15	
13510.00	90.800	359.030	6716.17	7238.06	7226.29	449.94	40.2943602	-104.4745582	0.10	
13604.00	90.650	359.010	6714.98	7331.92	7320.26	448.33	40.2946182	-104.4745600	0.16	
13699.00	90.830	359.190	6713.76	7426.77	7415.25	446.84	40.2948790	-104.4745615	0.27	
13793.00	90.800	359.240	6712.42	7520.64	7509.23	445.55	40.2951370	-104.4745622	0.06	
13888.00	89.970	359.310	6711.78	7615.52	7604.22	444.35	40.2953977	-104.4745625	0.88	
13982.00	90.090	359.300	6711.73	7709.40	7698.21	443.21	40.2956558	-104.4745627	0.13	
14076.00	90.150	359.210	6711.54	7803.28	7792.20	441.99	40.2959138	-104.4745632	0.12	
14171.00	89.910	359.090	6711.49	7898.15	7887.19	440.58	40.2961746	-104.4745643	0.28	
14265.00	89.970	358.590	6711.58	7992.00	7981.17	438.67	40.2964326	-104.4745673	0.54	
14360.00	90.060	359.560	6711.56	8086.86	8076.16	437.14	40.2966933	-104.4745688	1.03	
14454.00	89.970	359.090	6711.54	8180.75	8170.15	436.03	40.2969514	-104.4745689	0.51	
14549.00	90.150	359.400	6711.44	8275.62	8265.14	434.78	40.2972121	-104.4745694	0.38	
14643.00	89.880	358.840	6711.41	8369.49	8359.13	433.34	40.2974701	-104.4745707	0.66	
14738.00	90.030	359.060	6711.49	8464.34	8454.11	431.60	40.2977309	-104.4745730	0.28	
14832.00	90.000	359.110	6711.46	8558.21	8548.10	430.10	40.2979889	-104.4745745	0.06	
14927.00	90.060	359.300	6711.41	8653.09	8643.09	428.78	40.2982497	-104.4745753	0.21	
15021.00	90.030	359.280	6711.34	8746.97	8737.09	427.61	40.2985077	-104.4745756	0.04	
15116.00	90.250	359.430	6711.11	8841.86	8832.08	426.54	40.2987685	-104.4745755	0.28	
15210.00	90.030	359.070	6710.88	8935.74	8926.07	425.31	40.2990265	-104.4745760	0.45	
15305.00	89.910	359.020	6710.93	9030.60	9021.06	423.73	40.2992873	-104.4745777	0.14	
15399.00	89.940	359.020	6711.05	9124.46	9115.04	422.12	40.2995453	-104.4745796	0.03	
15494.00	90.180	359.140	6710.95	9219.32	9210.03	420.60	40.2998061	-104.4745811	0.28	
15588.00	89.750	358.600	6711.01	9313.17	9304.01	418.74	40.3000641	-104.4745839	0.73	
15683.00	89.820	358.470	6711.36	9407.98	9398.98	416.31	40.3003248	-104.4745886	0.16	
15777.00	89.970	358.540	6711.54	9501.79	9492.95	413.86	40.3005828	-104.4745935	0.18	
15871.00	89.630	358.390	6711.86	9595.59	9586.91	411.34	40.3008408	-104.4745987	0.40	
15966.00	89.970	358.120	6712.20	9690.37	9681.87	408.45	40.3011015	-104.4746051	0.46	
16060.00	89.940	358.790	6712.27	9784.18	9775.83	405.92	40.3013595	-104.4746103	0.71	
16154.00	89.970	358.860	6712.34	9878.02	9869.81	403.99	40.3016176	-104.4746133	0.08	
16249.00	89.820	358.600	6712.52	9972.85	9964.79	401.88	40.3018783	-104.4746169	0.32	
16343.00	89.910	358.870	6712.74	10066.68	10058.77	399.81	40.3021363	-104.4746205	0.30	
16437.00	89.720	358.250	6713.04	10160.50	10152.74	397.45	40.3023943	-104.4746250	0.69	
16532.00	89.910	358.710	6713.35	10255.30	10247.70	394.93	40.3026551	-104.4746301	0.52	
16626.00	90.460	359.730	6713.05	10349.18	10341.69	393.65	40.3029131	-104.4746308	1.23	
16720.00	90.000	358.980	6712.67	10443.07	10435.68	392.59	40.3031711	-104.4746307	0.94	
16815.00	89.970	359.170	6712.69	10537.93	10530.67	391.05	40.3034319	-104.4746323	0.20	
16882.00	89.970	359.040	6712.73	10604.84	10597.66	390.01	40.3036158	-104.4746333	0.19	Last BH MWD Survey (436'FNL & 1001'FEL, SEC.19)

**REFERENCE WELLPATH IDENTIFICATION**

Operator	NOBLE ENERGY, INC	Well	BOOTH STATE CC30-725
Field	WELD COUNTY (NOBLE NAD 83 GRID)	API/Legal	05-123-49272
Facility	SEC.31-T04N-R63W	Wellbore	BOOTH STATE CC30-725 AWB
Slot	SLOT#17 BOOTH STATE CC30-725 (557'FNL & 1511'FEL,SEC.31)		

**WELLPATH DATA (181 stations) † = interpolated, ‡ = extrapolated station**

MD [ft]	Inclination [°]	Azimuth [°]	TVD [ft]	Vert Sect [ft]	North [ft]	East [ft]	Latitude	Longitude	DLS [°/100ft]	Comments
16907.00‡	89.970	359.040	6712.74	10629.80	10622.66	389.59	40.3036844	-104.4746337	0.00	Projection to Bit (411'FNL & 1001'FEL, SEC.19)

**REFERENCE WELLPATH IDENTIFICATION**

Operator	NOBLE ENERGY, INC	Well	BOOTH STATE CC30-725
Field	WELD COUNTY (NOBLE NAD 83 GRID)	API/Legal	05-123-49272
Facility	SEC.31-T04N-R63W	Wellbore	BOOTH STATE CC30-725 AWB
Slot	SLOT#17 BOOTH STATE CC30-725 (557'FNL & 1511'FEL,SEC.31)		

**TARGETS**

Name	TVD [ft]	North [ft]	East [ft]	Grid East [US ft]	Grid North [US ft]	Latitude	Longitude	Shape
BOOTH CC30 19-4N-63W	14.00	-19.62	-2659.18	3282925.84	1344484.87	40.2745700	-104.4860000	polygon
	2D Polygon: dimensions not calculated							
BOOTH CC30 30-4N-63W	14.00	-19.62	-2659.18	3282925.84	1344484.87	40.2745700	-104.4860000	polygon
	2D Polygon: dimensions not calculated							
BOOTH CC30 31-4N-63W	14.00	-19.62	-2659.18	3282925.84	1344484.87	40.2745700	-104.4860000	polygon
	2D Polygon: dimensions not calculated							
BOOTH CC30-725 Rev-1 BPZ (460'FNL & 993'FEL,SEC.19)	6710.00	10573.49	398.64	<b>3285983.53</b>	<b>1355077.50</b>	40.3035491	-104.4746033	point
BOOTH STATE CC30-725 BHL /Plan REV-2 (200'FNL & 993'FEL,SEC.19)	6710.00	10832.67	396.77	3285981.66	1355336.68	40.3042606	-104.4745993	point
BOOTH STATE CC30-725 Rev-3 BHL Plan (200'FNL & 993'FEL,SEC.19)	6710.00	10833.49	395.74	<b>3285980.63</b>	<b>1355337.50</b>	40.3042629	-104.4746029	point
BOOTH STATE CC30-725 VS TARGET 2	6710.00	7489.32	446.57	<b>3286031.45</b>	<b>1351993.48</b>	40.2950823	-104.4745594	point
BOOTH STATE CC30-725 REV-3 LP for AC (300'FSL & 953'FEL,SEC.30)	6736.00	862.06	547.30	<b>3286132.18</b>	<b>1345366.52</b>	40.2768888	-104.4744730	point
BOOTH STATE CC30-725 VS TARGET 1	6736.00	4986.42	484.62	<b>3286069.50</b>	<b>1349490.69</b>	40.2882112	-104.4745267	point
BOOTH CC30-725 LP /Plan (200'FSL & 973'FEL,SEC.30)	6753.00	761.52	529.07	3286113.95	1345265.98	40.2766134	-104.4745425	point
BOOTH CC30-725 LP for AC (300'FSL & 973'FEL,SEC.30)	6753.00	861.91	527.30	<b>3286112.18</b>	<b>1345366.37</b>	40.2768890	-104.4745447	point
BOOTH STATE CC30 Hardlines	7000.00	0.26	22.32	3285607.22	1344504.75	40.2745400	-104.4763900	polygon
	2D Polygon: dimensions not calculated							

**REFERENCE WELLPATH IDENTIFICATION**

Operator	NOBLE ENERGY, INC	Well	BOOTH STATE CC30-725
Field	WELD COUNTY (NOBLE NAD 83 GRID)	API/Legal	05-123-49272
Facility	SEC.31-T04N-R63W	Wellbore	BOOTH STATE CC30-725 AWB
Slot	SLOT#17 BOOTH STATE CC30-725 (557'FNL & 1511'FEL,SEC.31)		

**WELLPATH COMPOSITION - Ref Wellbore: BOOTH STATE CC30-725 AWB    Ref Wellpath: BOOTH STATE CC30-725 AWP**

Start MD [ft]	End MD [ft]	Positional Uncertainty Model	Log Name/Comment	Wellbore	Survey Date
0.00	1945.00	OWSG MWD rev2 (MS+IFR1)	13.5" Hole EVO OWSG MWD rev2 (MS+IFR1)	BOOTH STATE CC30-725 AWB	3/22/2023
1945.00	16907.00	OWSG MWD rev2 (MS+IFR1)	8.5" Hole ATC Lucida OWSG MWD rev2 (MS+IFR1) <2089'-16882'>	BOOTH STATE CC30-725 AWB	4/5/2023

**REFERENCE WELLPATH IDENTIFICATION**

Operator	NOBLE ENERGY, INC	Well	BOOTH STATE CC30-725
Field	WELD COUNTY (NOBLE NAD 83 GRID)	API/Legal	05-123-49272
Facility	SEC.31-T04N-R63W	Wellbore	BOOTH STATE CC30-725 AWB
Slot	SLOT#17 BOOTH STATE CC30-725 (557'FNL & 1511'FEL,SEC.31)		

**WELLPATH COMMENTS**

MD [ft]	Inclination [°]	Azimuth [°]	TVD [ft]	Comment
239.00	0.520	269.540	239.00	First BH MWD Survey
7044.04	80.887	1.393	6726.64	Cross 200' Line (200'FSL & 940'FEL, SEC.30)
7144.57	87.364	359.475	6736.29	300' Landing Point on Plan (300'FSL & 941'FEL, SEC.30)
16882.00	89.970	359.040	6712.73	Last BH MWD Survey (436'FNL & 1001'FEL, SEC.19)
16907.00	89.970	359.040	6712.74	Projection to Bit (411'FNL & 1001'FEL, SEC.19)