

POINT	NAD 83	NAD 27
SURFACE HOLE LOCATION	N: 1256775.25	N: 256778.19
	E: 3252829.14	E: 2252980.75
	LAT: N40.0347023	LAT: N40.0347191
	LONG: W104.5970588	LONG: W104.5965408
LANDING POINT LOCATION	N: 1254375.42	N: 254378.34
	E: 3247032.74	E: 2247184.49
	LAT: N40.0282749	LAT: N40.0282916
	LONG: W104.6178436	LONG: W104.6173247
BOTTOM OF PRODUCTION ZONE	N: 1244737.26	N: 244740.28
	E: 3247114.33	E: 2247266.16
	LAT: N40.0018154	LAT: N40.0018319
	LONG: W104.6178946	LONG: W104.6173756
BOTTOM HOLE LOCATION	N: 1244647.26	N: 244650.28
	E: 3247115.09	E: 2247266.92
	LAT: N40.0015684	LAT: N40.0015849
	LONG: W104.6178951	LONG: W104.6173761

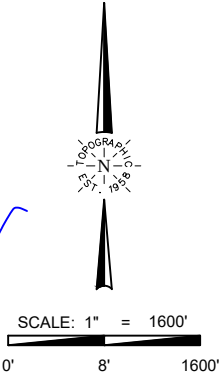
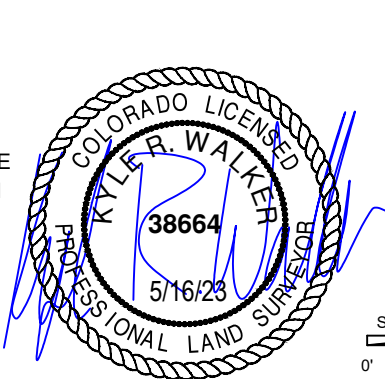


TOPOGRAPHIC
LOYALTY INNOVATION LEGACY
520 Stacy Court Ste B, Lafayette, CO 80026
303.666.0379 www.topographic.com

SURVEYOR'S STATEMENT
THE UNDERSIGNED HEREBY STATES THAT THE WELL LOCATION SHOWN HEREON WAS STAKED ON THE GROUND BASED ON EXISTING MONUMENTATION AND/OR PHYSICAL EVIDENCE FOUND IN THE FIELD AND IS CORRECT TO THE BEST OF MY KNOWLEDGE, INFORMATION AND BELIEF.

- NOTES**
- HORIZONTAL (NAD 83) AND VERTICAL (NAVD 88) DATUM IS BASED ON THE TRIMBLE VRS NETWORK. THE LINEAL UNITS OF MEASUREMENT ARE U.S. SURVEY FEET.
 - ALL DIRECTIONS, DISTANCES, AND DIMENSIONS SHOWN HEREON ARE BASED ON COORDINATES FROM THE "COLORADO COORDINATE SYSTEM OF 1983 NORTH ZONE" (TITLE 38, ARTICLE 52 C.R.S.).
 - ALL SECTION LINE DIMENSIONS SHOWN HEREON ARE BASED ON FIELD MEASUREMENTS OF EXISTING MONUMENTS AND/OR PHYSICAL EVIDENCE FOUND IN THE FIELD UNLESS OTHERWISE INDICATED.
 - PHYSICAL FEATURES SHOWN HEREON ARE FOR GRAPHICAL REPRESENTATION ONLY.
 - SEE FORM 2A FOR VISIBLE IMPROVEMENTS WITHIN 500' OF WELLHEAD.
 - DISTANCES TO NEAREST SECTION LINES ARE MEASURED PERPENDICULARLY.
 - THIS IS NOT A LAND SURVEY NOR LAND SURVEY PLAT.
- PDOP READING: 1.2 INSTRUMENT OPERATOR: B. Garcia

- LEGEND**
- COUNTY LINE
 - RANGE/TOWNSHIP LINE
 - SECTION LINE
 - QUARTER SECTION LINE
 - SIXTEENTH SECTION LINE
 - POINT OF INTERSECTION
 - MONUMENT FOUND
 - ⊙ CALCULATED CORNER



VERDAD RESOURCES CHIVE 2536 11H			
FIELD	04/19/2023	DRAFT	SW
REV 0	05/16/2023	CHECK	ZAK
SHEET : 1 OF 1		JOB: 1001724	

WELL LOCATION MAP
S.H.L. NE/4 SW/4, SECTION 19 T01N R64W 6TH PM
TPZ NW/4 NW/4, SECTION 25 T01N R65W 6TH PM
BPZ SW/4 SW/4, SECTION 36 T01N R65W 6TH PM
BHL SW/4 SW/4, SECTION 36 T01N R65W 6TH PM
WELD COUNTY, COLORADO