

POINT	NAD 83		NAD 27	
SURFACE HOLE LOCATION	N:	1256775.09	N:	256778.03
	E:	3252813.14	E:	2252964.75
	LAT:	N40.0347024	LAT:	N40.0347191
	LONG:	W104.5971159	LONG:	W104.5965980
LANDING POINT LOCATION	N:	1254368.18	N:	254371.09
	E:	3246414.18	E:	2246565.94
	LAT:	N40.0282719	LAT:	N40.0282886
	LONG:	W104.6200526	LONG:	W104.6195336
BOTTOM OF PRODUCTION ZONE	N:	1244732.02	N:	244735.03
	E:	3246497.73	E:	2246649.57
	LAT:	N40.0018179	LAT:	N40.0018344
	LONG:	W104.6200957	LONG:	W104.6195766
BOTTOM HOLE LOCATION	N:	1244642.02	N:	244645.04
	E:	3246498.51	E:	2246650.35
	LAT:	N40.0015708	LAT:	N40.0015873
	LONG:	W104.6200961	LONG:	W104.6195770



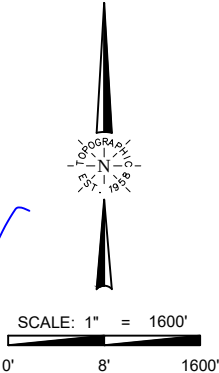
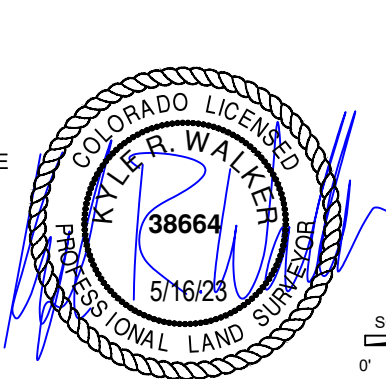
**TOPOGRAPHIC**  
LOYALTY INNOVATION LEGACY  
520 Stacy Court Ste B, Lafayette, CO 80026  
303.666.0379 www.topographic.com

**SURVEYOR'S STATEMENT**  
THE UNDERSIGNED HEREBY STATES THAT THE WELL LOCATION SHOWN HEREON WAS STAKED ON THE GROUND BASED ON EXISTING MONUMENTATION AND/OR PHYSICAL EVIDENCE FOUND IN THE FIELD AND IS CORRECT TO THE BEST OF MY KNOWLEDGE, INFORMATION AND BELIEF.

- NOTES**
- HORIZONTAL (NAD 83) AND VERTICAL (NAVD 88) DATUM IS BASED ON THE TRIMBLE VRS NETWORK. THE LINEAL UNITS OF MEASUREMENT ARE U.S. SURVEY FEET.
  - ALL DIRECTIONS, DISTANCES, AND DIMENSIONS SHOWN HEREON ARE BASED ON COORDINATES FROM THE "COLORADO COORDINATE SYSTEM OF 1983 NORTH ZONE" (TITLE 38, ARTICLE 52 C.R.S.).
  - ALL SECTION LINE DIMENSIONS SHOWN HEREON ARE BASED ON FIELD MEASUREMENTS OF EXISTING MONUMENTS AND/OR PHYSICAL EVIDENCE FOUND IN THE FIELD UNLESS OTHERWISE INDICATED.
  - PHYSICAL FEATURES SHOWN HEREON ARE FOR GRAPHICAL REPRESENTATION ONLY.
  - SEE FORM 2A FOR VISIBLE IMPROVEMENTS WITHIN 500' OF WELLHEAD.
  - DISTANCES TO NEAREST SECTION LINES ARE MEASURED PERPENDICULARLY.
  - THIS IS NOT A LAND SURVEY NOR LAND SURVEY PLAT.
- PDOP READING: 1.2 INSTRUMENT OPERATOR: B. Garcia

**LEGEND**

COUNTY LINE  
RANGE/TOWNSHIP LINE  
SECTION LINE  
QUARTER SECTION LINE  
SIXTEENTH SECTION LINE  
POINT OF INTERSECTION  
MONUMENT FOUND  
CALCULATED CORNER



VERDAD RESOURCES CHIVE 2536 10H			
FIELD	04/19/2023	DRAFT	SW
REV 0	05/16/2023	CHECK	ZAK
SHEET : 1 OF 1		JOB: 1001724	

**WELL LOCATION MAP**  
S.H.L. NE/4 SW/4, SECTION 19 T01N R64W 6TH PM  
TPZ NW/4 NW/4, SECTION 25 T01N R65W 6TH PM  
BPZ SW/4 SW/4, SECTION 36 T01N R65W 6TH PM  
BHL SW/4 SW/4, SECTION 36 T01N R65W 6TH PM  
WELD COUNTY, COLORADO