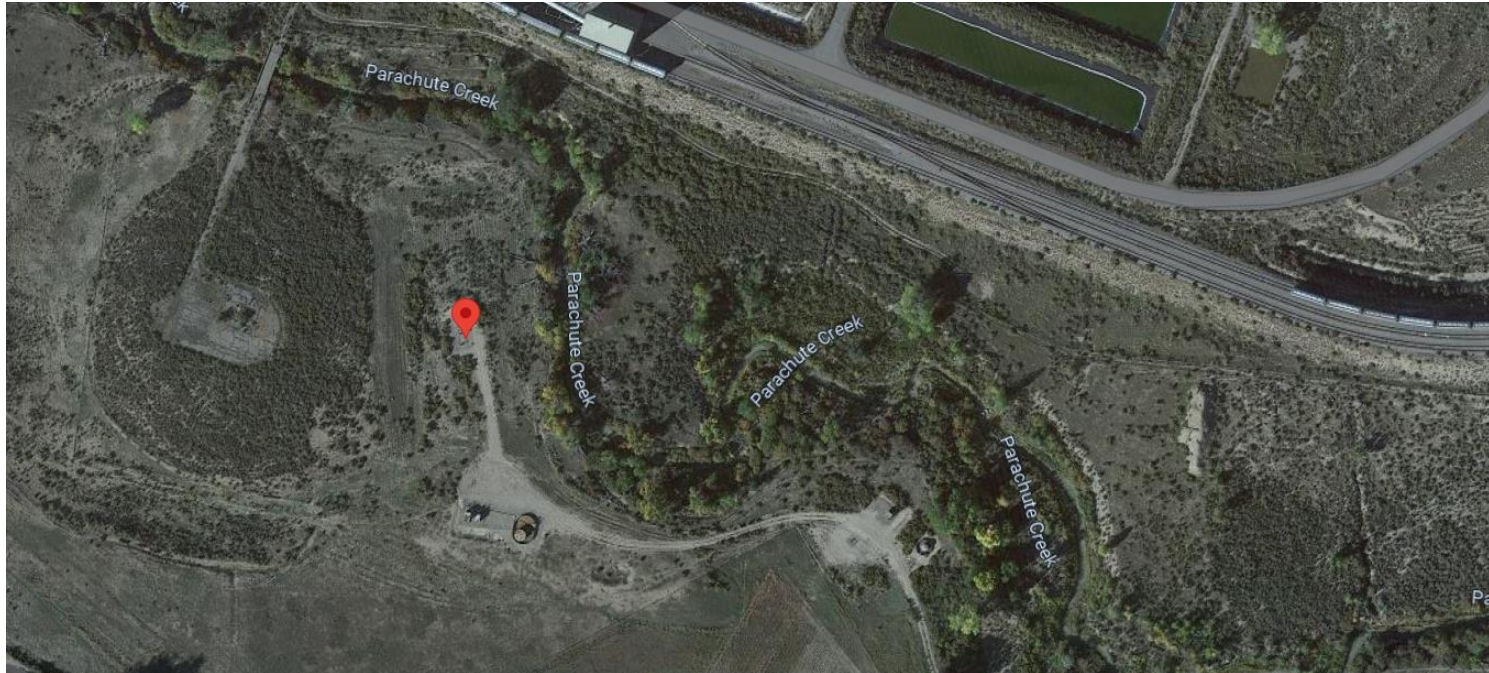


Storm Water Management and Erosion control
Location Name: TEP ROCKY MOUNTAIN LLC GM 266-3 Pad
Location ID: 334596



**Location Overview: Location is approximately 45 yards from
Parachute Creek
Section/Township/Range: 3 7S96W**



COLORADO
Oil & Gas Conservation
Commission
Department of Natural Resources

Storm water Management and Erosion control
Location Name: TEP ROCKY MOUNTAIN LLC GM 266-3 Pad
Location ID: 334596



North West corner of location.



North East corner of location.



South West corner of location.



South East corner of location.

Storm water Management and Erosion control
Location Name: TEP ROCKY MOUNTAIN LLC GM 266-3 Pad
Location ID: 334596



Photo # 8693 Lack of stabilization/compaction on location

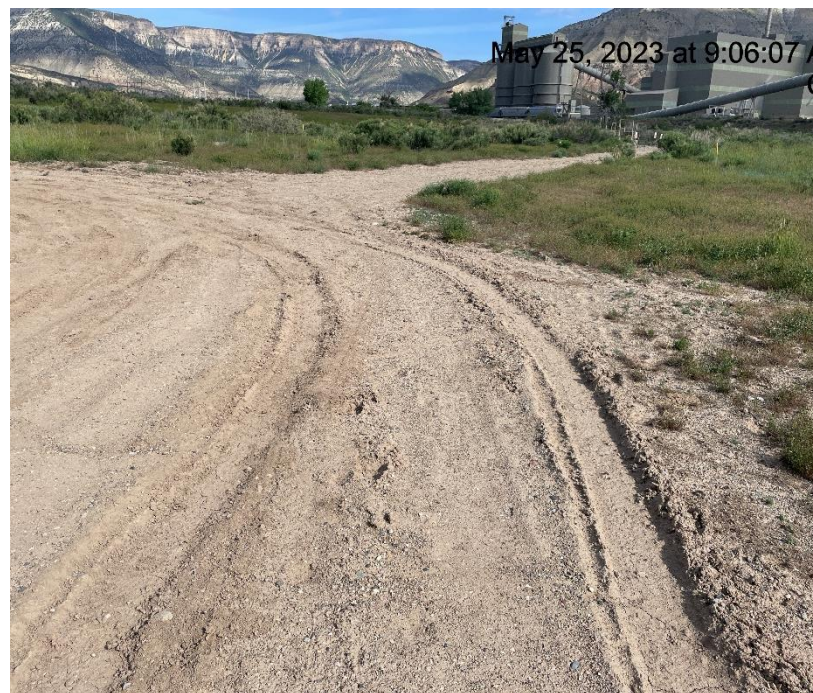


Photo # 8694 Lack of stabilization/compaction on location

Storm water Management and Erosion control
Location Name: TEP ROCKY MOUNTAIN LLC GM 266-3 Pad
Location ID: 334596



Photo # 8695 Lack of stabilization/compaction on location



Photo # 8696 Lack of stabilization/compaction on location

Storm water Management and Erosion control
Location Name: TEP ROCKY MOUNTAIN LLC GM 266-3 Pad
Location ID: 334596



Photo # 8699 Lack of stabilization/compaction on access road



Photo # 8700 Lack of stabilization/compaction on access road

Storm water Management and Erosion control
Location Name: TEP ROCKY MOUNTAIN LLC GM 266-3 Pad
Location ID: 334596



Photo # 8701 Lack of stabilization/compaction on access road



Photo # 8702 Lack of stabilization/compaction on access road

Storm water Management and Erosion control
Location Name: TEP ROCKY MOUNTAIN LLC GM 266-3 Pad
Location ID: 334596



Photo # 8703 Lack of stabilization/compaction on access road



Photo # 8704 Lack of stabilization/compaction on access road

Storm water Management and Erosion control
Location Name: TEP ROCKY MOUNTAIN LLC GM 266-3 Pad
Location ID: 334596

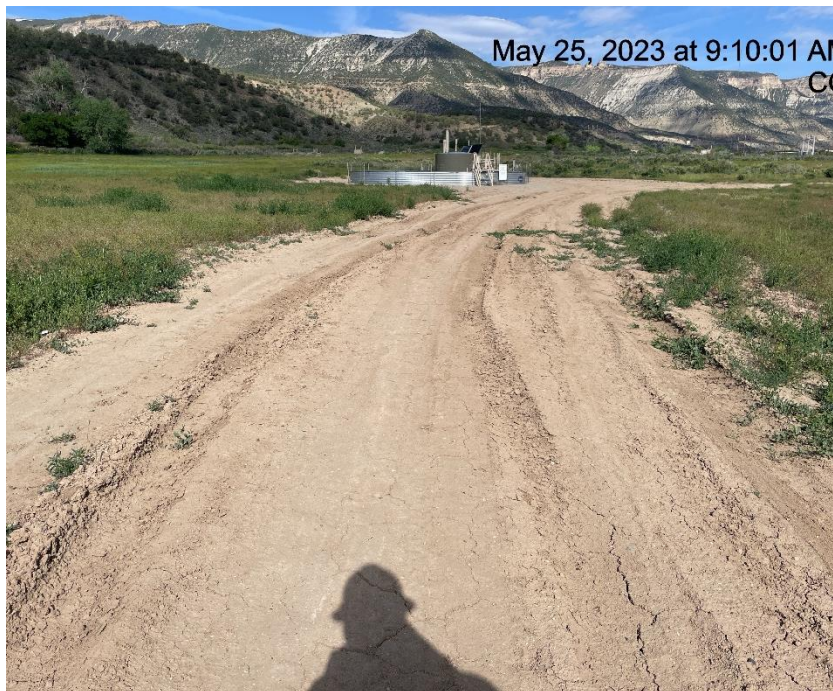


Photo # 8705 Lack of stabilization/compaction on access road



Photo # 8706 Lack of stabilization/compaction on access road