

## Inspection Photos

Location Name: TEP ROCKY MOUNTAIN LLC GM 266-3 Pad

Location ID: 334596



Photo # 8678 From entrance to location



Photo # 8679 From entrance to location

**Location ID: 334596**



## Inspection Photos

Location Name: TEP ROCKY MOUNTAIN LLC GM 266-3 Pad

Location ID: 334596



Photo # 8682 Location



Photo # 8684 Unused equipment



**COLORADO**  
Oil & Gas Conservation  
Commission  
Department of Natural Resources

## Inspection Photos

Location Name: TEP ROCKY MOUNTAIN LLC GM 266-3 Pad

Location ID: 334596



**Photo # 8685 Meter calibration info not conspicuously posted**



**Photo # 8686 Meter calibration info not conspicuously posted**

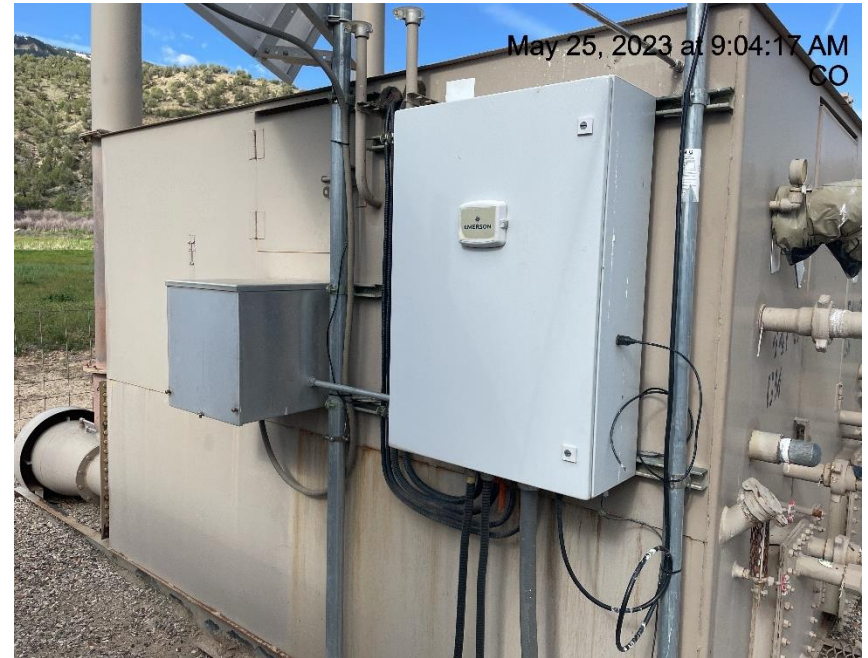
## Inspection Photos

Location Name: TEP ROCKY MOUNTAIN LLC GM 266-3 Pad

Location ID: 334596



**Photo # 8687 Meter calibration info not conspicuously posted**



**Photo # 8688 Meter calibration info not conspicuously posted**

**Inspection Photos**  
**Location Name: TEP ROCKY MOUNTAIN LLC GM 266-3 Pad**  
**Location ID: 334596**



**Photo # 8690 Meter calibration info not conspicuously posted**



**Photo # 8691 Meter calibration info not conspicuously posted**

## Inspection Photos

Location Name: TEP ROCKY MOUNTAIN LLC GM 266-3 Pad

Location ID: 334596



**Photo # 8692 Meter calibration info not conspicuously posted**