

Construction and Stormwater Inspection

Date: 05/17/2023

Operator: VERDAD RESOURCES LLC - 10651

Location ID: 481827

Inspection Document #: 708200271

Weld County, CO

NENW Section 34 T10N R59W

Dylan Edwardson
Reclamation Specialist, COGCC



COLORADO

**Oil & Gas Conservation
Commission**

Department of Natural Resources

Inspection Photos
Location Name: Peanut Fed 3403
Location ID: 481827

A photograph of a printed 'Form 2A' titled 'Oil and Gas Location Assessment' from the State of Colorado. The form contains details for 'Peanut Fed 3403' and 'Verdad Resources LLC'. It includes sections for 'CONSULTATION', 'FINANCIAL ASSURANCE', and 'LOCATION IDENTIFICATION'. A timestamp '5/17/23, 12:01 PM' and coordinates '90° E COGCC' are overlaid at the bottom right of the form.

Photo 1. A copy of the approved Form 2A was posted at the location entrance.

Inspection Photos
Location Name: Peanut Fed 3403
Location ID: 481827



Photo 2. Northwest corner. Stormwater ditch and berm BMP installed. Also pictured, cut and fill operations after the topsoil has been salvaged.

Inspection Photos
Location Name: Peanut Fed 3403
Location ID: 481827



Photo 3. See comments in Photo 2.

Inspection Photos
Location Name: Peanut Fed 3403
Location ID: 481827



Photo 4. Northeast corner. See comments in Photo 2. Also pictured, topsoil stockpile in the background.

Inspection Photos
Location Name: Peanut Fed 3403
Location ID: 481827



Photo 5. Facing south towards the topsoil stockpile. Photo illustrates that at the time of this inspection, the stockpile did not and any evidence of stabilization BMPs (e.g. equipment tracking). Subsequent photos illustrates evidence of rill erosion on the stockpile.

Inspection Photos
Location Name: Peanut Fed 3403
Location ID: 481827

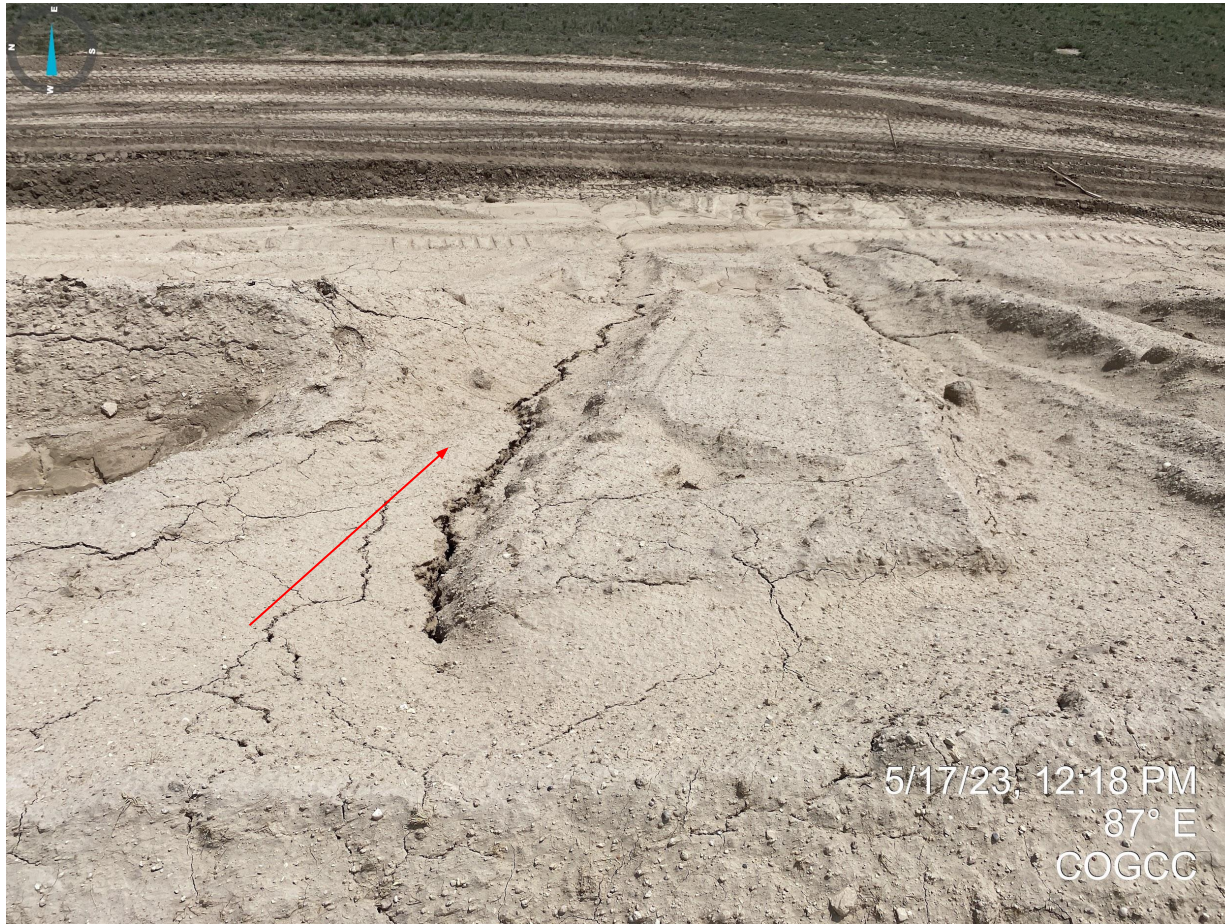


Photo 6. East side of stockpile; rill erosion identified. See comments in Photo 5.

Inspection Photos
Location Name: Peanut Fed 3403
Location ID: 481827

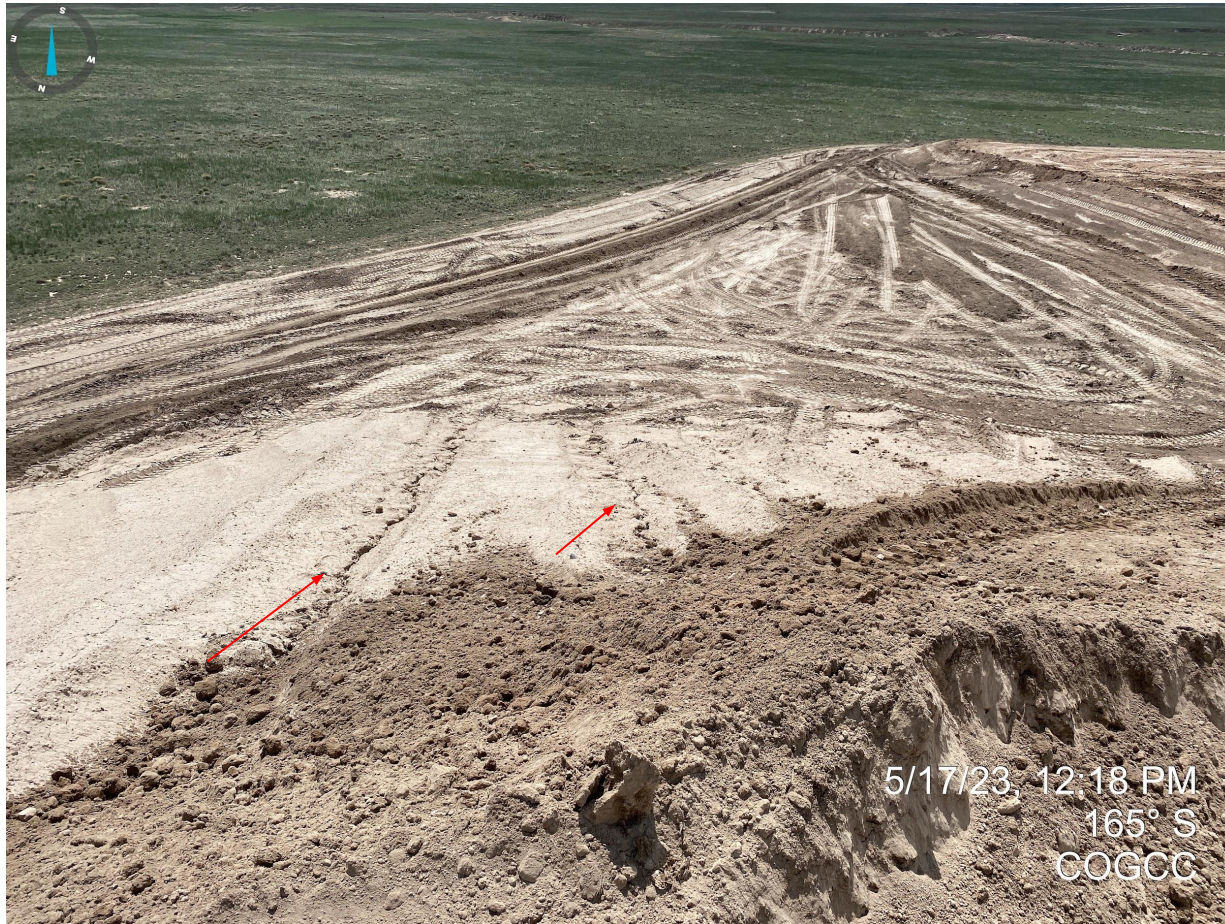


Photo 7. South side of stockpile, rill erosion identified. See comments in Photo 5.

Inspection Photos
Location Name: Peanut Fed 3403
Location ID: 481827



Photo 8. East side of stockpile, rill erosion identified. See comments in Photo 5.

Inspection Photos
Location Name: Peanut Fed 3403
Location ID: 481827



Photo 9. Taken from the southern end of the stockpile; see comments in Photo 5.

Inspection Photos
Location Name: Peanut Fed 3403
Location ID: 481827



Photo 10. Southeast corner, stormwater ditch and berm pictured. See comments in Photo 2.



Photo 11. Southwest corner. On site crews were in the process of shaping fill areas and constructing the sediment trap/detention area at the time of this inspection. A follow-up inspection will be conducted at a later date to ensure compliance with 1002.f Rules and Operator submitted stormwater management plan.

Inspection Photos
Location Name: Peanut Fed 3403
Location ID: 481827



Photo 12. During this inspection, Staff observed a water truck on location to mitigate the fugitive dust occurring from construction activities.