

Project: Mesa County, CO
 Site: BCU 14L Pad
 Well: Laramie BCU Fed 0993-14-07W
 Wellbore: OH
 Design: Design #1
 Latitude: 39.272688
 Longitude: -107.744861
 Ground Level: 7394.0
 RKB @ 7418.0usft (Ensign #157)

PROJECT DETAILS: Mesa County, CO

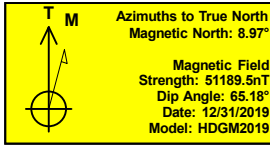
Geodetic System: US State Plane 1983
 Datum: North American Datum 1983
 Ellipsoid: GRS 1980
 Zone: Colorado Central Zone
 System Datum: Mean Sea Level

REFERENCE INFORMATION

Vertical (TVD) Reference: RKB @ 7418.0usft (Ensign #157)
 Section (VS) Reference: Slot - A-7(0.0N, 0.0E)
 Measured Depth Reference: RKB @ 7418.0usft (Ensign #157)
 Calculation Method: Minimum Curvature

SECTION DETAILS

MD	Inc	Azi	TVD	+N/-S	+E/-W	Dleg	TFace	Vsect	Annotation
0.0	0.00	0.00	0.0	0.0	0.0	0.00	0.00	0.0	
300.0	0.00	0.00	300.0	0.0	0.0	0.00	0.00	0.0	
1218.7	22.97	14.10	1194.3	176.2	44.3	2.50	14.10	181.7	
5596.1	22.97	14.10	5224.7	1832.8	460.5	0.00	0.00	1889.8	
6514.8	0.00	0.00	6119.0	2009.0	504.7	2.50	180.00	2071.5	
8264.8	0.00	0.00	7869.0	2009.0	504.7	0.00	0.00	2071.5	

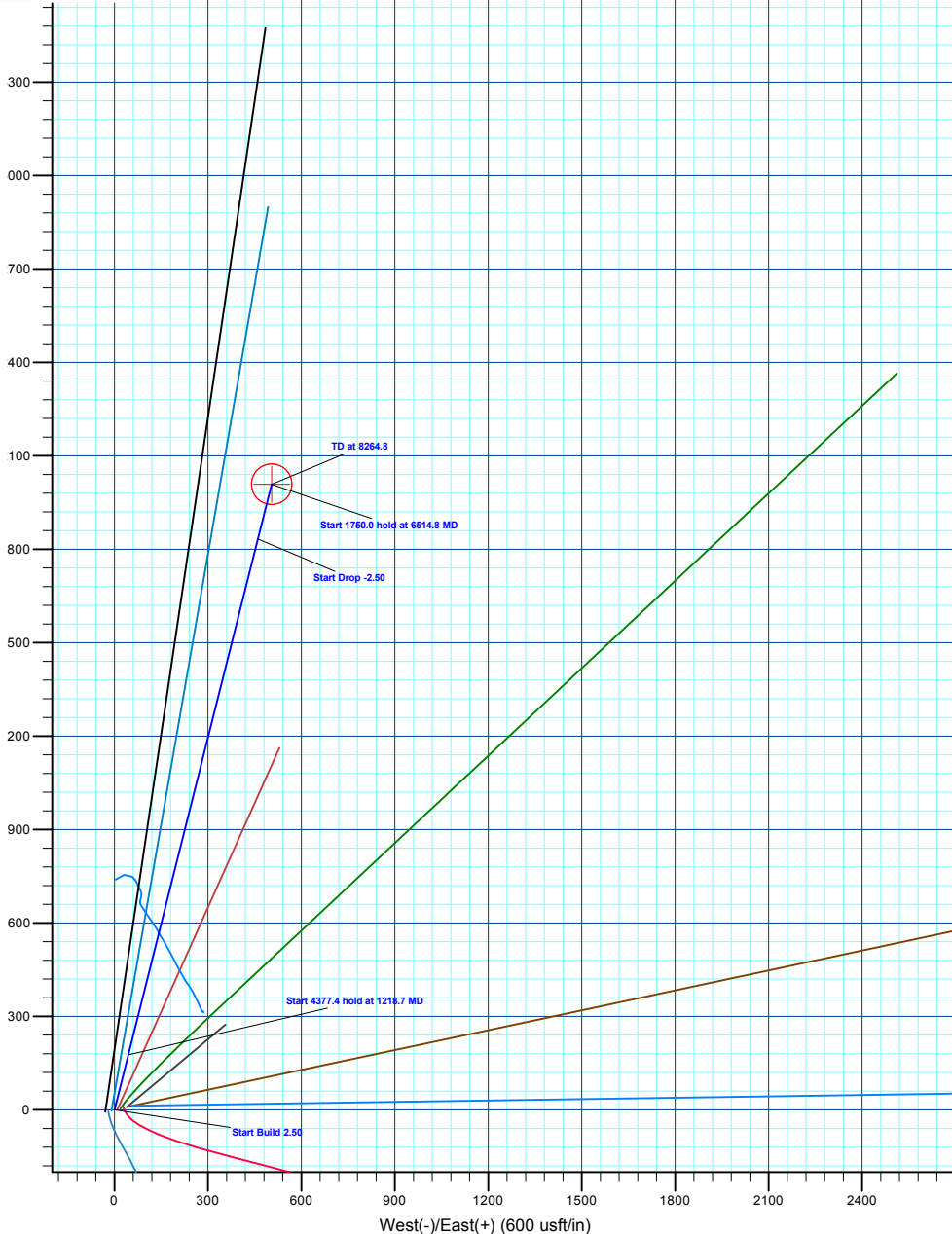
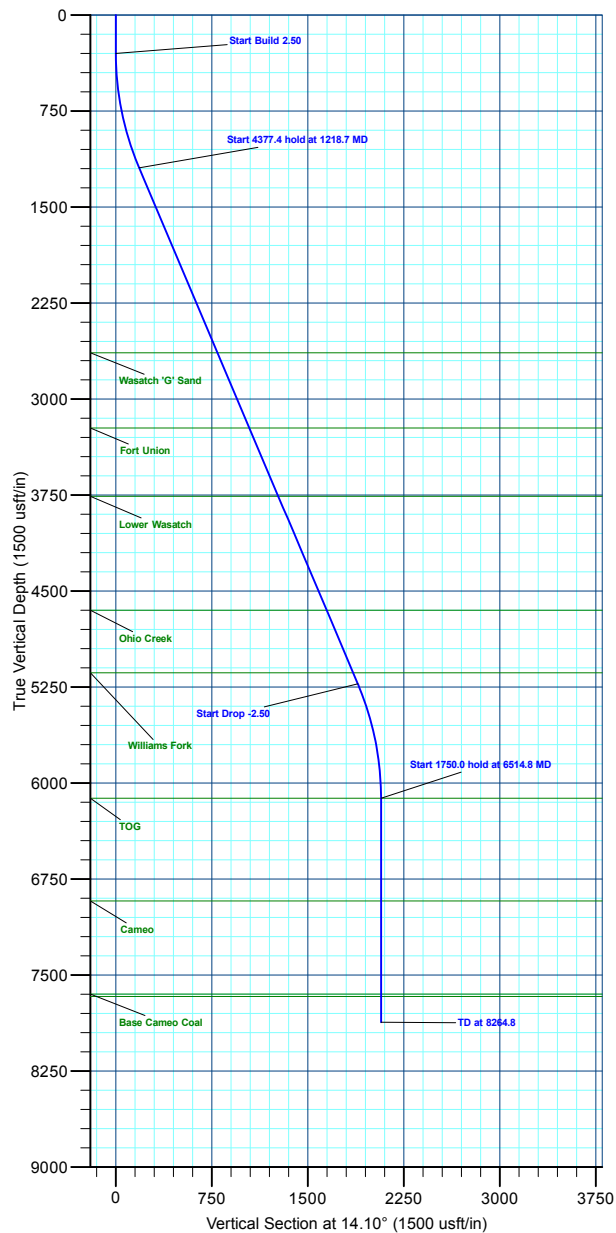


DESIGN TARGET DETAILS

Name	TVD	+N/-S	+E/-W	Northing	Easting	Latitude	Longitude
BHL - 14-07W	7869.0	2009.0	504.7	1534057.66	2365108.17	39.278204	-107.743078

WELL DETAILS: Laramie BCU Fed 0993-14-07W

+N/-S	+E/-W	Ground Level : 7394.0	Northing	Easting	Latitude	Longitude	A-7
0.0	0.0		1532061.70	2364553.97	39.272688	-107.744861	



Plan: Design #1 (Laramie BCU Fed 0993-14-07W/OH)

Created By: Will Jircik

Date: 14:04, October 24 2022