


**Map Key**

-  Well Location
-  Soil Sample Location
-  Earthen Berm Containment
-  Scraped Area



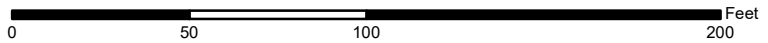
112 High Street  
Buffalo, Wyoming 82834  
855.684.5891

[www.absarokasolutions.com](http://www.absarokasolutions.com)

FEO.CO.0701.32


Surprise-Damfino S6  
**Soil Sample Locations 10/21/2022**  
Jackson County, Colorado

Scale: 1:650



0      50      100      200 Feet

Coordinate System: WGS 1984 UTM Zone 13N

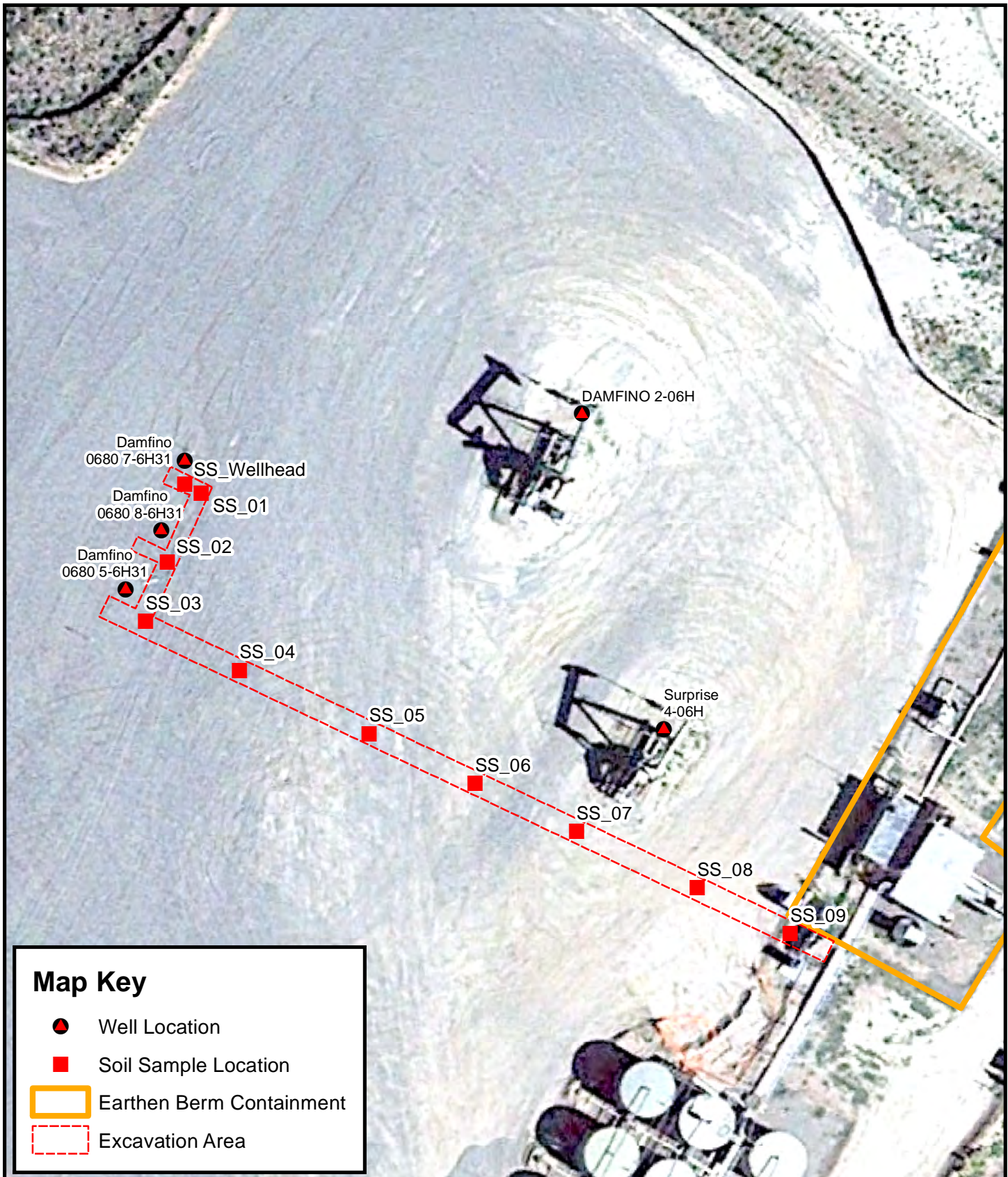


N



Date: 11/22/2022

Attachment B



**Map Key**

- Well Location
- Soil Sample Location
- Earthen Berm Containment
- Excavation Area



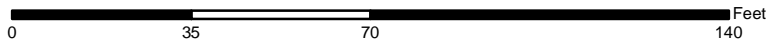
112 High Street  
Buffalo, Wyoming 82834  
855.684.5891

[www.absarokasolutions.com](http://www.absarokasolutions.com)


FEO.CO.0701.32

Surprise-Damfino S6  
Soil Sample Locations - **12/15/2022**

Jackson County, Colorado  
Scale: 1:450



0 35 70 140 Feet



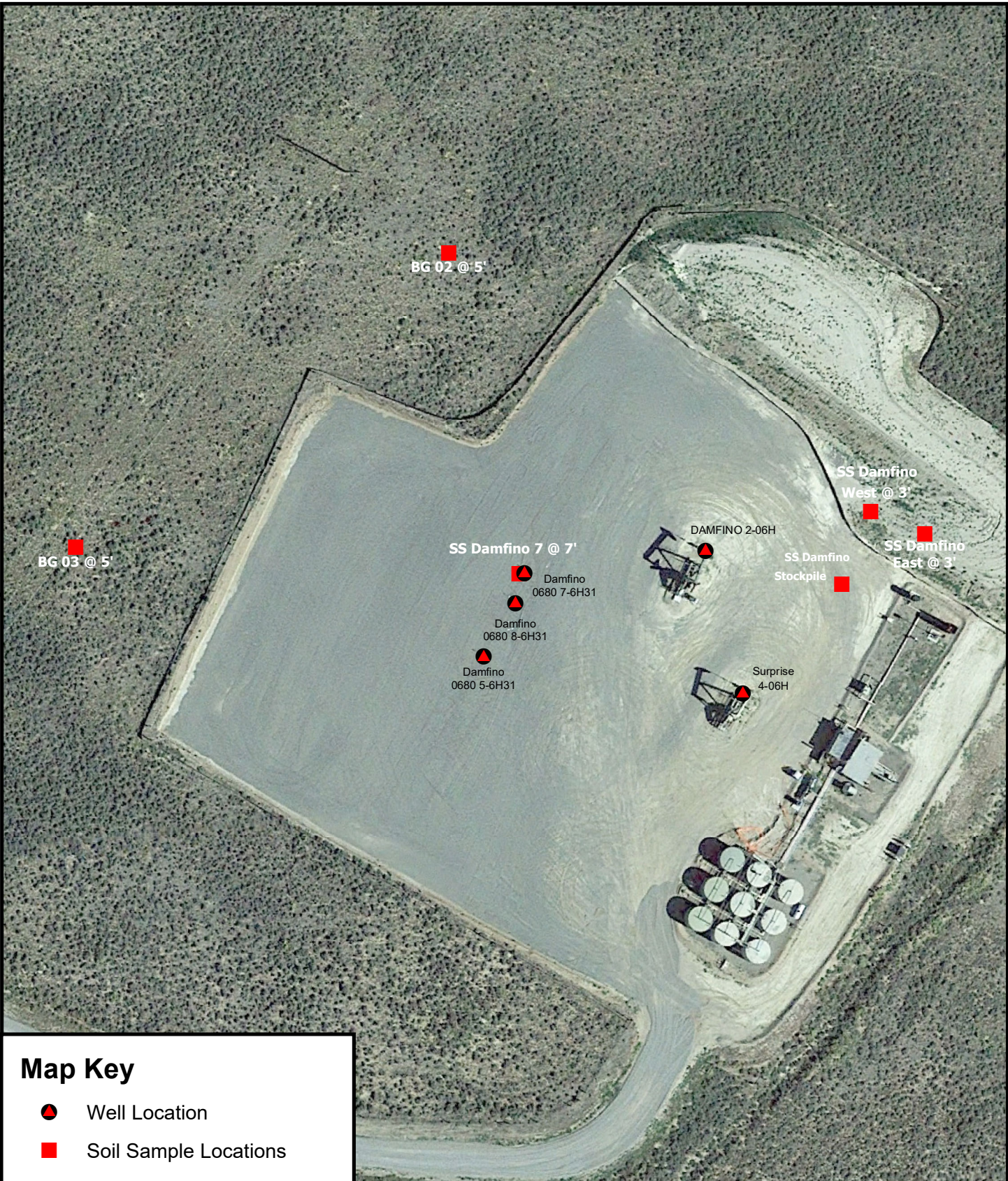
N

Coordinate System: WGS 1984 UTM Zone 13N



Date: 1/18/2023

Attachment B



**Map Key**

- Well Location
- Soil Sample Locations



112 High Street  
Buffalo, Wyoming 82834  
855.684.5891

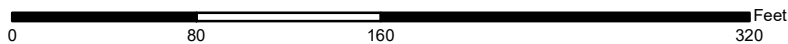
[www.absarokasolutions.com](http://www.absarokasolutions.com)

FEO.CO.0701.32

**Surprise-Damfino S6  
Soil Sample Locations - 4/27/2023**

Jackson County, Colorado

Scale: 1:1,000



Coordinate System: WGS 1984 UTM Zone 13N



Date: 5/22/2023

Attachment B