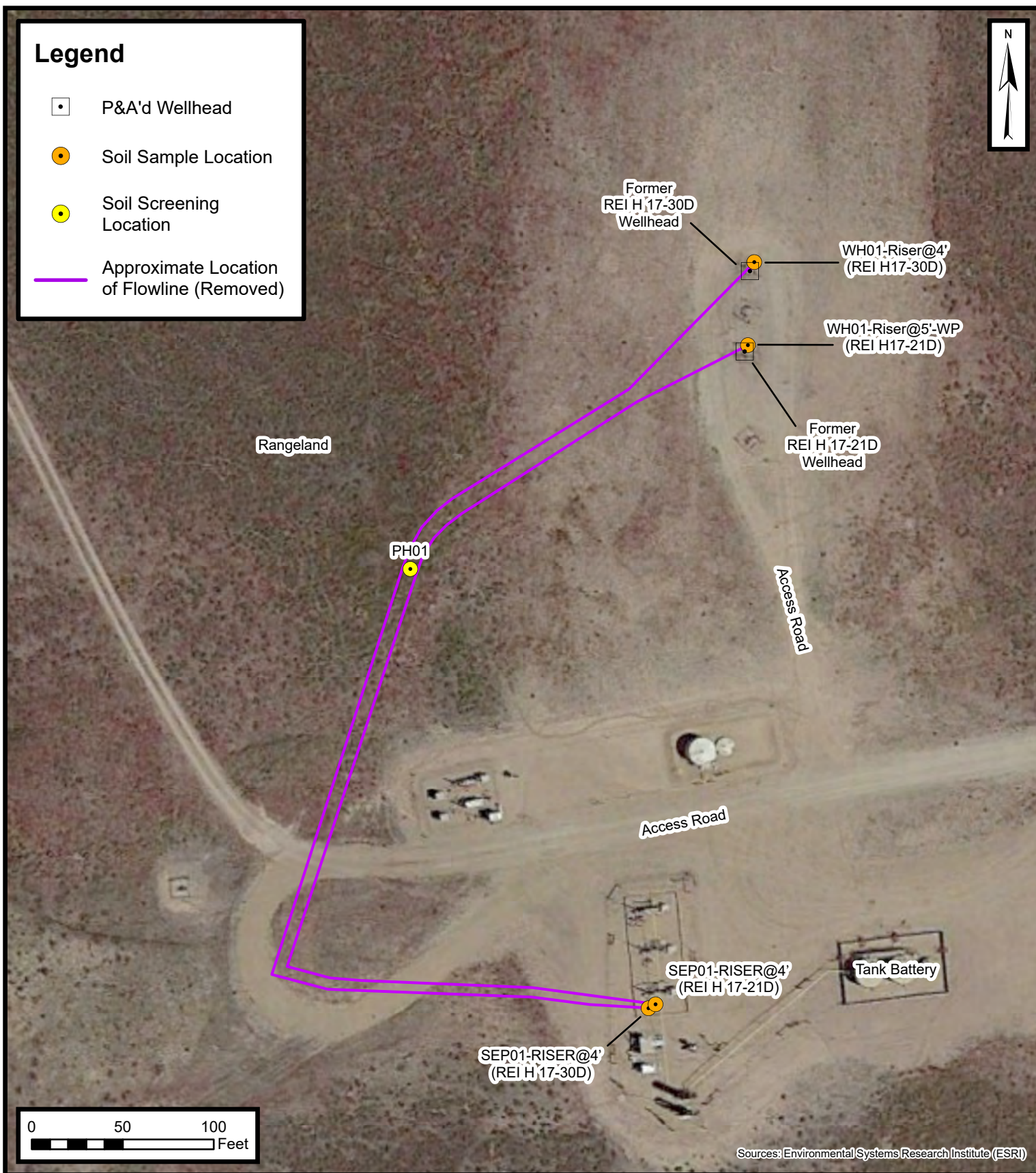


Legend

- P&A'd Wellhead
- Soil Sample Location
- Soil Screening Location
- Approximate Location of Flowline (Removed)



Sources: Environmental Systems Research Institute (ESRI)

Flowline Excavation Site Map

REI H 17-21D, 30D Wellheads
Kerr-McGee Oil & Gas Onshore, LP
NWNW SEC 17-T3N-R65W
Weld County, CO

Project Number: 09A1417235

FIGURE
3