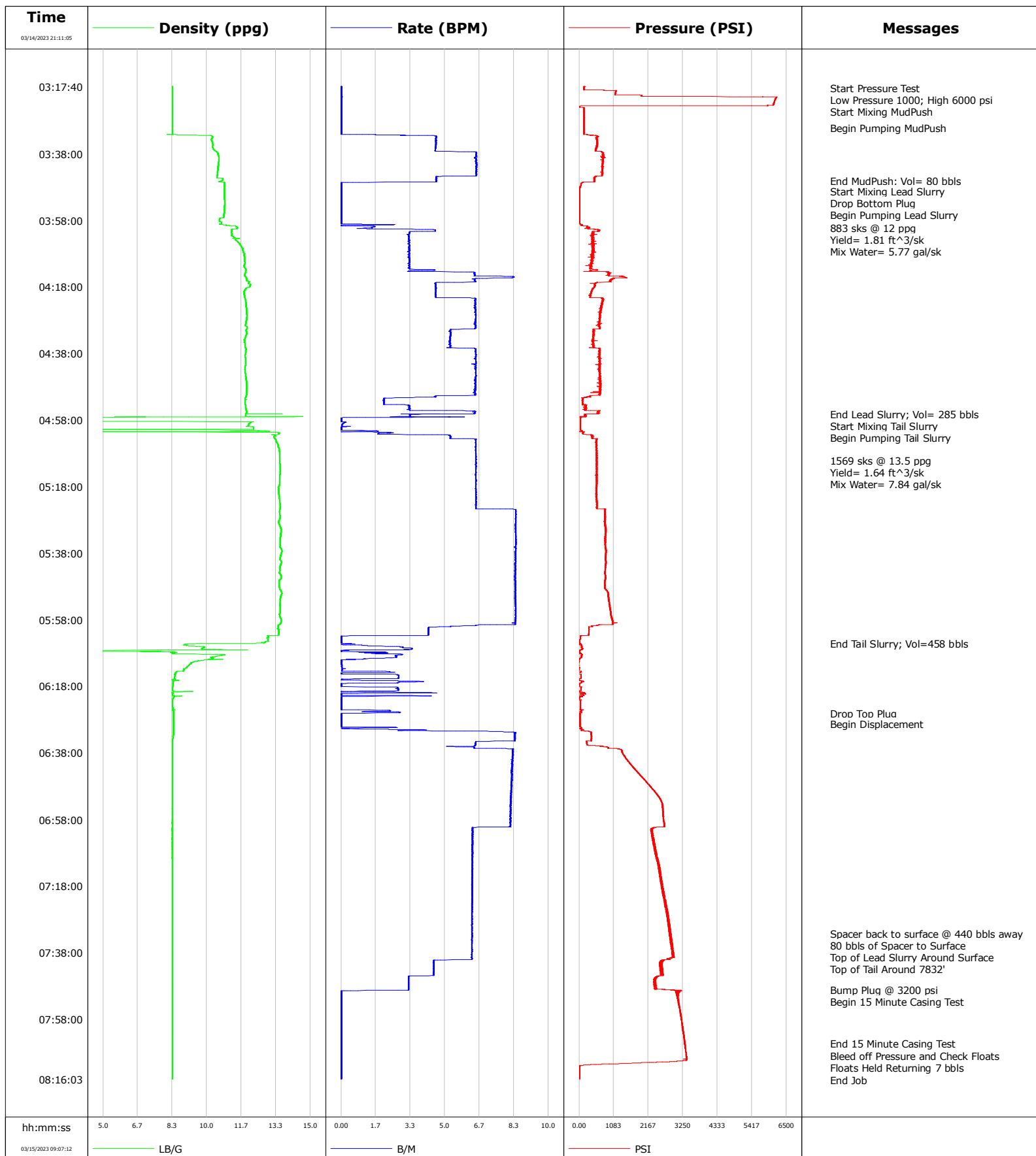


**Well** Berry Farms 8-2HZ  
**Field** Wattenburg  
**Engineer** Thomas Trapp  
**Country** USA

**Client** Oxy  
**SIR No.** 63971  
**Job Type** 5.5" Production  
**Job Date**



				Customer Oxy			Job Number 63971		
Well Berry Farms 8-2HZ 8-2HZ			Location (legal) Platteville			Schlumberger Location		Job Start Mar/14/2023	
Field Wattenburg		Formation Name/Type		Deviation deg	Bit Size in		Well MD 22434.0 ft		Well TVD 7289.0 ft
County Weld		State/Province Colorado		BHP psi	BHST degF	BHCT degF	Pore Press. Gradient lb/gal		
Well Master 0066640698		API/UWI 05-123-51858-00-00							
Rig Name Precision 461	Drilled For Oil and Gas	Service Via Land	Casing/Liner						
			Depth, ft	Size, in	Weight, lb/ft	Grade		Thread	
Offshore Zone	Well Class New	Well Type Development	1865.0	9.6	36.0	J-55		BUTT	
			22434.0	5.5	17.0	P-110		BUTT	
Drilling Fluid Type		Max. Density lb/gal	Plastic Viscosity cP	Tubing/Drill Pipe					
				T/D	Depth, ft	Size, in	Weight, lb/ft	Grade	
Service Line Cementing	Job Type 5.5" Production								
Max. Allowed Tub. Press psi	Max. Allowed Ann. Press psi	WH Connection	Perforations/Open Hole						
			Top, ft	Bottom, ft	shot/ft	No. of Shots		Total Interval ft	
Service Instructions	ft	ft							
	ft	ft							
	ft	ft							
	Treat Down Casing	Displacement 520.0 bbl	Packer Type		Packer Depth ft				
	Tubing Vol. bbl	Casing Vol. 520.0 bbl	Annular Vol. 89.3 bbl		Openhole Vol. 672.0 bbl				
	Casing/Tubing Secured <input checked="" type="checkbox"/>	1 Hole Vol. Circulated prior to Cement <input checked="" type="checkbox"/>	Casing Tools		Squeeze Job				
	Lift Pressure psi		Shoe Type Float	Squeeze Type					
	Pipe Rotated <input checked="" type="checkbox"/>	Pipe Reciprocated <input checked="" type="checkbox"/>	Shoe Depth 22434.0 ft		Tool Type				
	No. Centralizers	Top Plugs 1	Bottom Plugs 1	Stage Tool Type		Tool Depth ft			
	Cement Head Type Single			Stage Tool Depth ft		Tail Pipe Size in			
Job Scheduled For Mar/14/2023 22:30	Arrived on Location Mar/14/2023 22:30	Leave Location Mar/15/2023 09:00	Collar Type Float		Tail Pipe Depth ft				
			Collar Depth 22389.0 ft		Sqz. Total Vol. bbl				
Date	Time 24-hr clock	Treating Pressure PSI	Flow Rate B/M	Density LB/G	Volume BBL	Message			
03/14/2023	21:11:05	39	0.0	0.01	0.0	Started Acquisition			
03/15/2023	03:18:12	148	0.0	8.34	0.0	Start Pressure Test			
03/15/2023	03:19:12	1149	0.0	8.34	0.0	Low Pressure 1000; High 6000 psi			
03/15/2023	03:24:12	144	0.0	8.34	0.0	Start Mixing MudPush			
03/15/2023	03:30:12	150	0.0	8.34	0.0	Begin Pumping MudPush			
03/15/2023	03:46:12	501	4.6	10.67	0.0	End MudPush; Vol= 80 bbls			
03/15/2023	03:49:12	4	0.0	10.85	0.0	Start Mixing Lead Slurry			
03/15/2023	03:51:12	3	0.0	10.84	0.0	Drop Bottom Plug			
03/15/2023	03:56:12	10	0.0	10.83	0.0	Begin Pumping Lead Slurry			
03/15/2023	04:00:12	311	1.5	11.48	0.0	883 sks @ 12 ppg			
03/15/2023	04:02:12	419	3.2	11.21	0.0	Mix Water= 5.77 gal/sk			
03/15/2023	04:56:12	291	4.7	12.06	0.0	End Lead Slurry; Vol= 285 bbls			
03/15/2023	04:58:12	36	0.0	0.13	0.0	Start Mixing Tail Slurry			
03/15/2023	05:00:12	35	0.0	12.24	0.0	Begin Pumping Tail Slurry			
03/15/2023	05:10:12	540	6.5	13.52	0.0	1569 sks @ 13.5 ppg			
03/15/2023	05:11:12	554	6.5	13.53	0.0	Yield= 1.64 ft^3/sk			
03/15/2023	05:12:12	568	6.5	13.53	0.0	Mix Water= 7.84 gal/sk			
03/15/2023	06:05:12	40	0.5	9.61	0.0	End Tail Slurry; Vol=458 bbls			
03/15/2023	06:26:12	25	0.0	8.40	0.0	Drop Top Plug			
03/15/2023	06:29:12	23	0.0	8.40	0.0	Begin Displacement			
03/15/2023	07:32:12	2844	6.3	8.35	0.0	Spacer back to surface @ 440 bbls away			

Well			Field		Job Start		Customer		Job Number	
Berry Farms 8-2HZ 8-2HZ			Wattenburg		Mar/14/2023		Oxy		63971	
Date	Time 24-hr clock	Treating Pressure PSI	Flow Rate B/M	Density LB/G	Volume BBL	Message				
03/15/2023	07:34:12	2907	6.3	8.35	0.0	Top of Lead Slurry Around Surface				
03/15/2023	07:35:12	2876	6.3	8.34	0.0	Top of Tail Around 7832'				
03/15/2023	07:49:12	2656	3.2	8.34	0.0	Bump Plug @ 3200 psi				
03/15/2023	07:50:12	3037	0.0	8.35	0.0	Begin 15 Minute Casing Test				
03/15/2023	08:05:12	3309	0.0	8.35	0.0	End 15 Minute Casing Test				
03/15/2023	08:09:12	3358	0.0	8.34	0.0	Bleed off Pressure and Check Floats				
03/15/2023	08:10:12	3373	0.0	8.34	0.0	Floats Held Returning 7 bbls				

Post Job Summary

Average Pump Rates, bbl/min					Volume of Fluid Injected, bbl			
Slurry	N2	Mud	Maximum Rate		Total Slurry	Mud	Spacer	N2
			0.0		0.0	0.0	0.0	
Treating Pressure Summary, psi					Breakdown Fluid			
Maximum	Final	Average	Bump Plug to	Breakdown	Type	Volume	Density	
0	0		3200			bbl	lb/gal	
Avg. N2 Percent	Designed Slurry Volume		Displacement	Mix Water Temp	Cement Circulated to Surface?		Volume	
%	0.0 bbl		0.0 bbl	degF	<input type="checkbox"/>		bbl	
				Washed Thru Perfs		<input type="checkbox"/>		To
						ft		
Customer or Authorized Representative			Schlumberger Supervisor			Circulation Lost		Job Completed
			Thomas Trapp			<input type="checkbox"/>		<input type="checkbox"/>
						-		-