

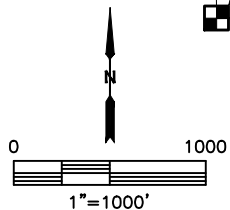
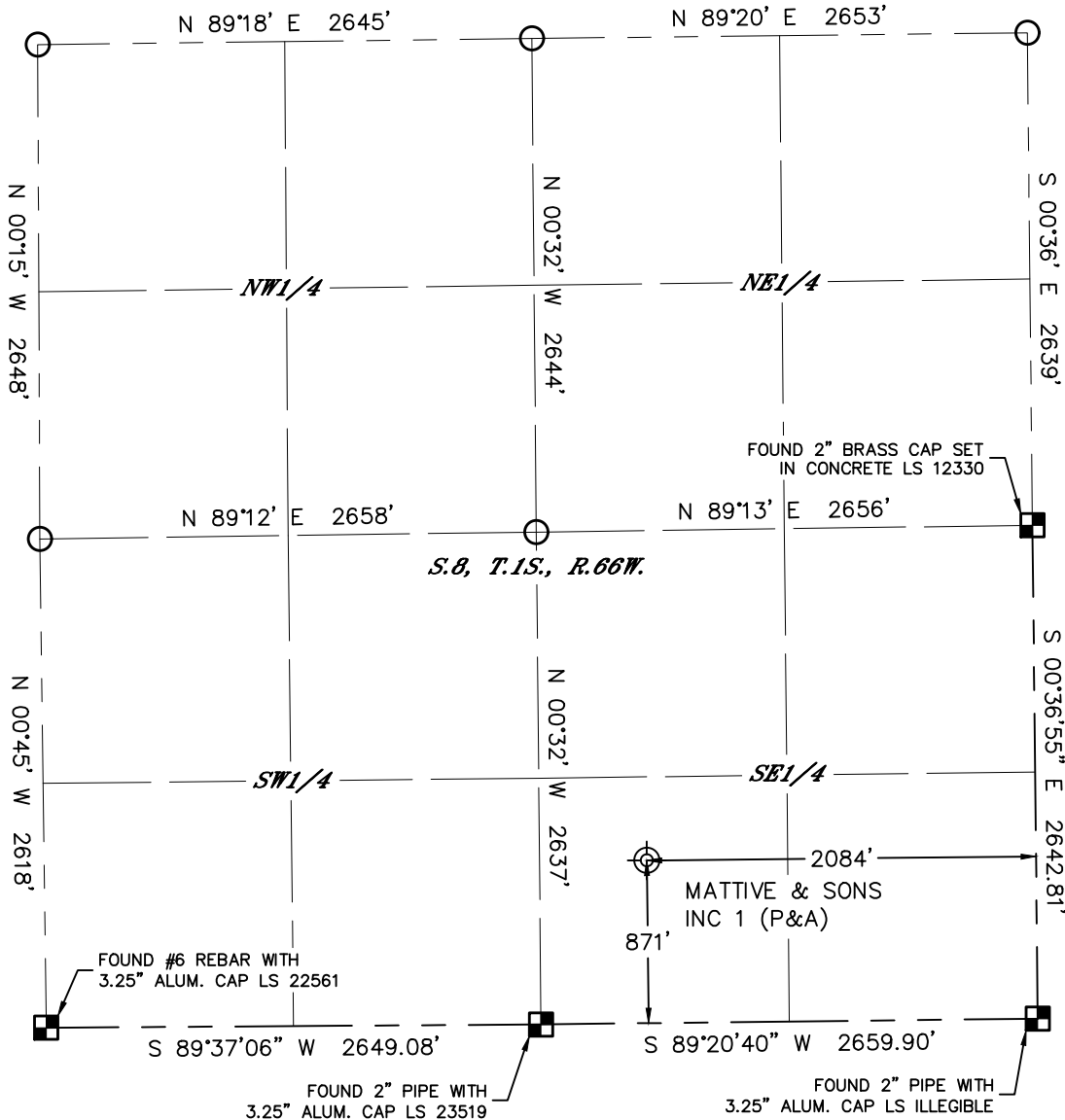


Lat40°, Inc. 6250 W. 10th Street, Unit 2, Greeley, CO 970-515-5294

PLUGGED AND ABANDONED WELL EXHIBIT

MATTIVE & SONS INC 1

SECTION: 8
TOWNSHIP: 1S
RANGE: 66W
6TH. P.M.
ADAMS COUNTY, CO



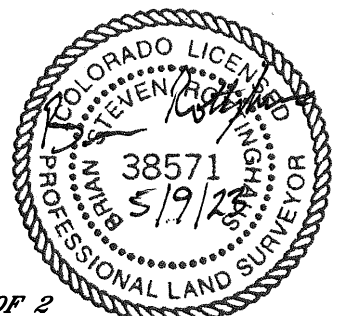
CLIENT: PDC ENERGY, INC.				LANDMAN: PAUL MONTVILLE		
INSTRUMENT OPERATOR: CASEY KOHOUT				SURVEY DATE: 5/8/2023		SURFACE USE: SUBDIVISION TRACT
SHL FOOTAGE		SHL LAT°	SHL LONG°	SHL PDOP	SHL ELEV (FT.)	SHL 1/4/1/4
871	FSL	2084	FEL	39.97470	-104.79729	1.0
					5014	SWSE
						8-1S-66
DESCRIPTION: LOCATED EXPOSED WELL. FOUND 10" STEEL PIPE FILLED WITH CONCRETE APPROXIMATELY 4.1' BELOW GRADE						

LEGEND

- = ALIQUOT MONUMENT AS DESCRIBED
- = CALCULATED POSITION PER BRANT LE 08-162HNX WELL LOCATION PLAT
- ⊙ = ABANDONED WELL

NOTE:

- 1) Bearings shown are Grid Bearings of the Colorado State Plane Coordinate System, North Zone, North American Datum 1983. The lineal dimensions as contained herein are based upon the "U.S. Survey Foot."
- 2) Distances to section lines measured at 90 degrees from said section lines.
- 3) Ground elevations are based on an observed GPS elevation (NAVD 1988 DATUM).
- 4) Latitude and Longitude shown are (NAD 83 DATUM).
- 5) Sectional data as shown hereon is from previous surveys and was not verified for this P&A Exhibit.
- 6) This map does not represent a boundary survey.



SHEET 1 OF 2

Brian S. Rottinghaus—On behalf of Lat40°, Inc.
Colorado Licensed Professional Land Surveyor No. 38571
DATE: 5/9/2023
PROJECT#: 2023189



Lat40°, Inc. 6250 W. 10th Street, Unit 2, Greeley, CO 970-515-5294

PLUGGED AND ABANDONED WELL EXHIBIT

MATTIVE & SONS INC 1

SECTION: 8
TOWNSHIP: 1S
RANGE: 66W
6TH. P.M.
ADAMS COUNTY, CO
DATE: 5/8/2023



VIEW NORTH



VIEW WEST



VIEW EAST



VIEW SOUTH



VIEW TOP