

Inspection Photos

Location Name: TEP Rocky Mountain LLC EXXON GM 21-12 Pad

Location # 311597



Photo # 7920 From entrance to location



Photo # 7921 From entrance to location

Inspection Photos

Location Name: TEP Rocky Mountain LLC EXXON GM 21-12 Pad

Location # 311597



Photo # 7922 From entrance to location



Photo # 7923 Location

Inspection Photos

Location Name: TEP Rocky Mountain LLC EXXON GM 21-12 Pad

Location # 311597



Photo # 7924 Location



Photo # 7925 Location



Inspection Photos

Location Name: TEP Rocky Mountain LLC EXXON GM 21-12 Pad

Location # 311597



Photo # 7926 Location



Photo # 7927 Location



COLORADO
Oil & Gas Conservation
Commission
Department of Natural Resources

Inspection Photos

Location Name: TEP Rocky Mountain LLC EXXON GM 21-12 Pad

Location # 311597



Photo # 7929 Open ended load line



Photo # 7930 Open ended load lines



COLORADO
Oil & Gas Conservation
Commission
Department of Natural Resources

Inspection Photos

Location Name: TEP Rocky Mountain LLC EXXON GM 21-12 Pad

Location # 311597



Photo # 7931 Open ended load line



Photo # 7934 Open ended load line

Inspection Photos

Location Name: TEP Rocky Mountain LLC EXXON GM 21-12 Pad

Location # 311597



Photo # 1507 From inspection 708900066 conducted on 03/02/2023 Containment needs maintenance



Photo # 7941 Containment needs maintenance

Inspection Photos

Location Name: TEP Rocky Mountain LLC EXXON GM 21-12 Pad

Location # 311597



Photo # 1511 From inspection 708900066 conducted on 03/02/2023 Containment needs maintenance



Photo # 7937 Containment needs maintenance

Inspection Photos

Location Name: TEP Rocky Mountain LLC EXXON GM 21-12 Pad

Location # 311597



Photo # 1514 From inspection 708900066 conducted on 03/02/2023 Containment needs maintenance



Photo # 7936 Containment needs maintenance

Inspection Photos

Location Name: TEP Rocky Mountain LLC EXXON GM 21-12 Pad

Location # 311597



Photo # 7938 Containment needs maintenance



Photo # 7956 Stained soils & gravel



COLORADO
Oil & Gas Conservation
Commission
Department of Natural Resources

Inspection Photos

Location Name: TEP Rocky Mountain LLC EXXON GM 21-12 Pad

Location # 311597

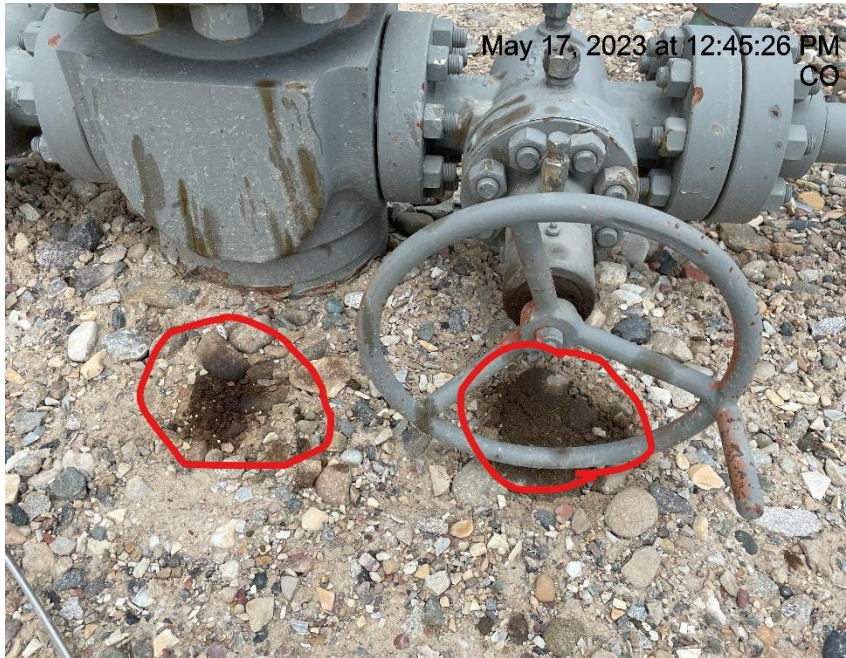


Photo # 7957 Stained soils & gravel



Photo # 7959 Stained soils & gravel

Inspection Photos

Location Name: TEP Rocky Mountain LLC EXXON GM 21-12 Pad

Location # 311597



Photo # 7960 Stained soils & gravel



Photo # 7962 Stained soils & gravel



Inspection Photos

Location Name: TEP Rocky Mountain LLC EXXON GM 21-12 Pad

Location # 311597



Photo # 7964 Stained soils & gravel



Photo # 7976 Meter calibration info not conspicuously posted

Inspection Photos
Location Name: TEP Rocky Mountain LLC EXXON GM 21-12 Pad
Location # 311597



Photo # 7977 Meter calibration info not conspicuously posted



Photo # 7978 Meter calibration info not conspicuously posted

Inspection Photos

Location Name: TEP Rocky Mountain LLC EXXON GM 21-12 Pad

Location # 311597



Photo # 7979 Meter calibration info not conspicuously posted



Photo # 7983 Unmarked deadman