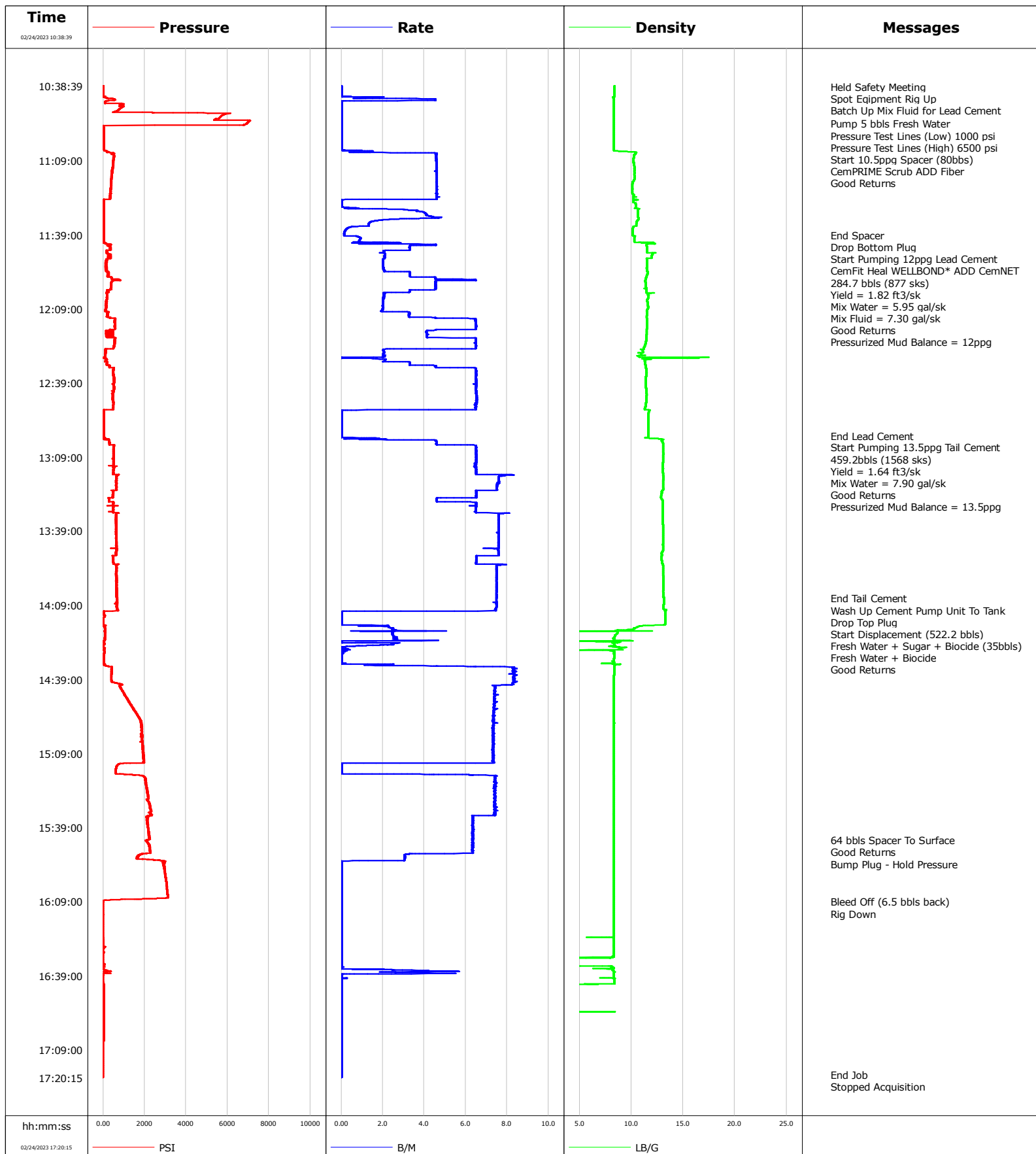


Well Berry Farms 8-5HZ
Field Wattenberg
Engineer Dustin Krueger
Country United States

Client OXY USA WTP LP
SIR No. EOIC-01142
Job Type 5.5" Production Casing
Job Date 2-24-2022



				Customer OXY USA WTP LP				Job Number EOIC-01142			
Well Berry Farms 8-5HZ			Location (legal) 40.243736574,-104.907598396			Schlumberger Location Windsor, Colorado			Job Start Feb/24/2023		
Field Wattenberg		Formation Name/Type		Deviation 90 deg		Bit Size in		Well MD 22527.0 ft		Well TVD 7278.0 ft	
County Weld		State/Province Colorado		BHP psi		BHST 230 degF		BHCT 230 degF		Pore Press. Gradient lb/gal	
Well Master 0066640699		API/UWI 05-123-51862-00-00									
Rig Name Precision 461		Drilled For Gas		Service Via Land		Casing/ Liner					
						Depth, ft		Size, in		Weight, lb/ft	
								Grade		Thread	
Offshore Zone		Well Class Old		Well Type Workover		22511.0		5.5		17.0	
						0.0		0.0		0.0	
Drilling Fluid Type		Max. Density 9.20 lb/gal		Plastic Viscosity cP		Tubing/Drill Pipe					
						T/D		Depth, ft		Size, in	
								Weight, lb/ft		Grade	
Service Line Cementing		Job Type 5.5" Production Casing									
Max. Allowed Tub. Press psi		Max. Allowed Ann. Press psi		WH Connection Single Cement head		Perforations/Open Hole					
						Top, ft		Bottom, ft		shot/ft	
						ft		ft		No. of Shots	
						ft		ft		Total Interval ft	
						ft		ft		Diameter in	
						Treat Down Casing		Displacement 522.2 bbl		Packer Type	
										Packer Depth ft	
						Tubing Vol. bbl		Casing Vol. 523.3 bbl		Annular Vol. 726.8 bbl	
										Openhole Vol. 1356.1 bbl	
Casing/Tubing Secured <input checked="" type="checkbox"/>		1 Hole Vol. Circulated prior to Cement <input checked="" type="checkbox"/>				Casing Tools		Squeeze Job			
Lift Pressure 16108 psi						Shoe Type Float		Squeeze Type			
Pipe Rotated <input type="checkbox"/>		Pipe Reciprocated <input type="checkbox"/>				Shoe Depth 22511.0 ft		Tool Type			
No. Centralizers 335		Top Plugs 1		Bottom Plugs 1		Stage Tool Type N/A		Tool Depth ft			
Cement Head Type Single						Stage Tool Depth 0.0 ft		Tail Pipe Size in			
Job Scheduled For Feb/24/2023 01:30		Arrived on Location Feb/23/2023 00:00		Leave Location Feb/24/2023 17:30		Collar Type Float		Tail Pipe Depth ft			
						Collar Depth 22465.6 ft		Sqz. Total Vol. bbl			
Date	Time 24-hr clock	Treating Pressure PSI	Flow Rate B/M	Density LB/G	Volume BBL	Message					
02/24/2023	10:38:39	0.0	0.0	0.0	0.0	Started Acquisition					
02/24/2023	10:39:00	0.0	0.0	0.0	0.0	Held Safety Meeting					
02/24/2023	10:39:30	0.0	0.0	0.0	0.0	Spot Equipment Rig Up					
02/24/2023	10:40:00	0.0	0.0	0.0	0.0	Batch Up Mix Fluid for Lead Cement					
02/24/2023	10:40:19	0.0	0.0	0.0	0.0						
02/24/2023	10:41:59	0.0	0.0	0.0	0.0						
02/24/2023	10:43:39	0.0	0.0	0.0	0.0						
02/24/2023	10:45:19	0.0	0.0	0.0	0.0						
02/24/2023	10:46:59	0.0	0.0	0.0	0.0						
02/24/2023	10:48:39	0.0	0.0	0.0	0.0						
02/24/2023	10:50:19	0.0	0.0	0.0	0.0						
02/24/2023	10:51:59	0.0	0.0	0.0	0.0						
02/24/2023	10:53:39	0.0	0.0	0.0	0.0						
02/24/2023	10:54:00	0.0	0.0	0.0	0.0	Pump 5 bbls Fresh Water					
02/24/2023	10:55:19	0.0	0.0	0.0	0.0						
02/24/2023	10:56:33	0.0	0.0	0.0	0.0	Pressure Test Lines (Low) 1000 psi					
02/24/2023	10:56:59	0.0	0.0	0.0	0.0						
02/24/2023	10:58:33	0.0	0.0	0.0	0.0	Pressure Test Lines (High) 6500 psi					
02/24/2023	10:58:39	0.0	0.0	0.0	0.0						
02/24/2023	11:00:19	0.0	0.0	0.0	0.0						
02/24/2023	11:01:33	0.0	0.0	0.0	0.0	Start 10.5ppg Spacer (80bbs)					

Well			Field	Job Start		Customer	Job Number	
Berry Farms 8-5HZ			Wattenberg		Feb/24/2023		OXY USA WTP LP	EOIC-01142
Date	Time 24-hr clock	Treating Pressure PSI	Flow Rate B/M	Density LB/G	Volume BBL	Message		
02/24/2023	11:02:33	0.0	0.0	0.0	0.0	CemPRIME Scrub ADD Fiber		
02/24/2023	11:03:00	0.0	0.0	0.0	0.0	Good Returns		
02/24/2023	11:03:39	0.0	0.0	0.0	0.0			
02/24/2023	11:05:19	0.0	0.0	0.0	0.0			
02/24/2023	11:06:59	0.0	0.0	0.0	0.0			
02/24/2023	11:08:39	0.0	0.0	0.0	0.0			
02/24/2023	11:10:19	0.0	0.0	0.0	0.0			
02/24/2023	11:11:59	0.0	0.0	0.0	0.0			
02/24/2023	11:13:39	0.0	0.0	0.0	0.0			
02/24/2023	11:15:19	0.0	0.0	0.0	0.0			
02/24/2023	11:16:59	0.0	0.0	0.0	0.0			
02/24/2023	11:18:39	0.0	0.0	0.0	0.0			
02/24/2023	11:20:19	0.0	0.0	0.0	0.0			
02/24/2023	11:21:59	0.0	0.0	0.0	0.0			
02/24/2023	11:23:39	0.0	0.0	0.0	0.0			
02/24/2023	11:25:19	0.0	0.0	0.0	0.0			
02/24/2023	11:26:59	0.0	0.0	0.0	0.0			
02/24/2023	11:28:39	0.0	0.0	0.0	0.0			
02/24/2023	11:30:19	0.0	0.0	0.0	0.0			
02/24/2023	11:31:59	0.0	0.0	0.0	0.0			
02/24/2023	11:33:39	0.0	0.0	0.0	0.0			
02/24/2023	11:35:19	0.0	0.0	0.0	0.0			
02/24/2023	11:36:59	0.0	0.0	0.0	0.0			
02/24/2023	11:38:39	0.0	0.0	0.0	0.0			
02/24/2023	11:39:10	0.0	0.0	0.0	0.0	End Spacer		
02/24/2023	11:39:40	0.0	0.0	0.0	0.0	Drop Bottom Plug		
02/24/2023	11:40:10	0.0	0.0	0.0	0.0	Start Pumping 12ppg Lead Cement		
02/24/2023	11:40:19	0.0	0.0	0.0	0.0			
02/24/2023	11:40:40	0.0	0.0	0.0	0.0	CemFit Heal WELLBOND* ADD CemNET		
02/24/2023	11:41:10	0.0	0.0	0.0	0.0	284.7 bbls (877 sks)		
02/24/2023	11:41:40	0.0	0.0	0.0	0.0	Yield = 1.82 ft3/sk		
02/24/2023	11:41:59	0.0	0.0	0.0	0.0			
02/24/2023	11:42:10	0.0	0.0	0.0	0.0	Mix Water = 5.95 gal/sk		
02/24/2023	11:42:40	0.0	0.0	0.0	0.0	Mix Fluid = 7.30 gal/sk		
02/24/2023	11:43:10	0.0	0.0	0.0	0.0	Good Returns		
02/24/2023	11:43:39	0.0	0.0	0.0	0.0			
02/24/2023	11:43:40	0.0	0.0	0.0	0.0	Pressurized Mud Balance = 12ppg		
02/24/2023	11:45:19	0.0	0.0	0.0	0.0			
02/24/2023	11:46:59	0.0	0.0	0.0	0.0			
02/24/2023	11:48:39	0.0	0.0	0.0	0.0			
02/24/2023	11:50:19	0.0	0.0	0.0	0.0			
02/24/2023	11:51:59	0.0	0.0	0.0	0.0			
02/24/2023	11:53:39	0.0	0.0	0.0	0.0			
02/24/2023	11:55:19	0.0	0.0	0.0	0.0			
02/24/2023	11:56:59	0.0	0.0	0.0	0.0			
02/24/2023	11:58:39	0.0	0.0	0.0	0.0			
02/24/2023	12:00:19	0.0	0.0	0.0	0.0			
02/24/2023	12:01:59	0.0	0.0	0.0	0.0			
02/24/2023	12:03:39	0.0	0.0	0.0	0.0			
02/24/2023	12:05:19	0.0	0.0	0.0	0.0			
02/24/2023	12:06:59	0.0	0.0	0.0	0.0			
02/24/2023	12:08:39	0.0	0.0	0.0	0.0			
02/24/2023	12:10:19	0.0	0.0	0.0	0.0			
02/24/2023	12:11:59	0.0	0.0	0.0	0.0			

Well			Field		Job Start		Customer		Job Number	
Berry Farms 8-5HZ			Wattenberg		Feb/24/2023		OXY USA WTP LP		EOIC-01142	
Date	Time 24-hr clock	Treating Pressure PSI		Flow Rate B/M	Density LB/G		Volume BBL		Message	
02/24/2023	12:15:19	0.0		0.0	0.0		0.0			
02/24/2023	12:16:59	0.0		0.0	0.0		0.0			
02/24/2023	12:18:39	0.0		0.0	0.0		0.0			
02/24/2023	12:20:19	0.0		0.0	0.0		0.0			
02/24/2023	12:21:59	0.0		0.0	0.0		0.0			
02/24/2023	12:23:39	0.0		0.0	0.0		0.0			
02/24/2023	12:25:19	0.0		0.0	0.0		0.0			
02/24/2023	12:26:59	0.0		0.0	0.0		0.0			
02/24/2023	12:30:19	0.0		0.0	0.0		0.0			
02/24/2023	12:31:59	0.0		0.0	0.0		0.0			
02/24/2023	12:33:39	0.0		0.0	0.0		0.0			
02/24/2023	12:35:19	0.0		0.0	0.0		0.0			
02/24/2023	12:36:59	0.0		0.0	0.0		0.0			
02/24/2023	12:38:39	0.0		0.0	0.0		0.0			
02/24/2023	12:40:19	0.0		0.0	0.0		0.0			
02/24/2023	12:41:59	0.0		0.0	0.0		0.0			
02/24/2023	12:43:39	0.0		0.0	0.0		0.0			
02/24/2023	12:45:19	0.0		0.0	0.0		0.0			
02/24/2023	12:46:59	0.0		0.0	0.0		0.0			
02/24/2023	12:48:39	0.0		0.0	0.0		0.0			
02/24/2023	12:50:19	0.0		0.0	0.0		0.0			
02/24/2023	12:51:59	0.0		0.0	0.0		0.0			
02/24/2023	12:53:39	0.0		0.0	0.0		0.0			
02/24/2023	12:55:19	0.0		0.0	0.0		0.0			
02/24/2023	12:56:59	0.0		0.0	0.0		0.0			
02/24/2023	12:58:39	0.0		0.0	0.0		0.0			
02/24/2023	13:00:08	0.0		0.0	0.0		0.0		End Lead Cement	
02/24/2023	13:00:19	0.0		0.0	0.0		0.0			
02/24/2023	13:00:38	0.0		0.0	0.0		0.0		Start Pumping 13.5ppg Tail Cement	
02/24/2023	13:01:00	0.0		0.0	0.0		0.0		459.2bbls (1568 sks)	
02/24/2023	13:01:38	0.0		0.0	0.0		0.0		Yield = 1.64 ft3/sk	
02/24/2023	13:01:59	0.0		0.0	0.0		0.0			
02/24/2023	13:02:08	0.0		0.0	0.0		0.0		Mix Water = 7.90 gal/sk	
02/24/2023	13:02:38	0.0		0.0	0.0		0.0		Good Returns	
02/24/2023	13:03:08	0.0		0.0	0.0		0.0		Pressurized Mud Balance = 13.5ppg	
02/24/2023	13:03:39	0.0		0.0	0.0		0.0			
02/24/2023	13:05:19	0.0		0.0	0.0		0.0			
02/24/2023	13:06:59	0.0		0.0	0.0		0.0			
02/24/2023	13:08:39	0.0		0.0	0.0		0.0			
02/24/2023	13:10:19	0.0		0.0	0.0		0.0			
02/24/2023	13:11:59	0.0		0.0	0.0		0.0			
02/24/2023	13:13:39	0.0		0.0	0.0		0.0			
02/24/2023	13:15:19	0.0		0.0	0.0		0.0			
02/24/2023	13:16:59	0.0		0.0	0.0		0.0			
02/24/2023	13:18:39	0.0		0.0	0.0		0.0			
02/24/2023	13:20:19	0.0		0.0	0.0		0.0			
02/24/2023	13:21:59	0.0		0.0	0.0		0.0			
02/24/2023	13:23:39	0.0		0.0	0.0		0.0			
02/24/2023	13:25:19	0.0		0.0	0.0		0.0			
02/24/2023	13:26:59	0.0		0.0	0.0		0.0			
02/24/2023	13:28:39	0.0		0.0	0.0		0.0			
02/24/2023	13:31:59	0.0		0.0	0.0		0.0			
02/24/2023	13:33:39	0.0		0.0	0.0		0.0			
02/24/2023	13:35:19	0.0		0.0	0.0		0.0			

Well			Field		Job Start		Customer		Job Number	
Berry Farms 8-5HZ			Wattenberg		Feb/24/2023		OXY USA WTP LP		EOIC-01142	
Date	Time 24-hr clock	Treating Pressure PSI		Flow Rate B/M	Density LB/G		Volume BBL	Message		
02/24/2023	13:38:39	0.0		0.0	0.0		0.0			
02/24/2023	13:40:19	0.0		0.0	0.0		0.0			
02/24/2023	13:41:59	0.0		0.0	0.0		0.0			
02/24/2023	13:43:39	0.0		0.0	0.0		0.0			
02/24/2023	13:45:19	0.0		0.0	0.0		0.0			
02/24/2023	13:46:59	0.0		0.0	0.0		0.0			
02/24/2023	13:48:39	0.0		0.0	0.0		0.0			
02/24/2023	13:50:19	0.0		0.0	0.0		0.0			
02/24/2023	13:51:59	0.0		0.0	0.0		0.0			
02/24/2023	13:53:39	0.0		0.0	0.0		0.0			
02/24/2023	13:55:19	0.0		0.0	0.0		0.0			
02/24/2023	13:56:59	0.0		0.0	0.0		0.0			
02/24/2023	13:58:39	0.0		0.0	0.0		0.0			
02/24/2023	14:00:19	0.0		0.0	0.0		0.0			
02/24/2023	14:01:59	0.0		0.0	0.0		0.0			
02/24/2023	14:03:39	0.0		0.0	0.0		0.0			
02/24/2023	14:05:19	0.0		0.0	0.0		0.0			
02/24/2023	14:06:06	0.0		0.0	0.0		0.0	End Tail Cement		
02/24/2023	14:06:36	0.0		0.0	0.0		0.0	Wash Up Cement Pump Unit To Tank		
02/24/2023	14:06:59	0.0		0.0	0.0		0.0			
02/24/2023	14:07:06	0.0		0.0	0.0		0.0	Drop Top Plug		
02/24/2023	14:08:39	0.0		0.0	0.0		0.0			
02/24/2023	14:10:19	0.0		0.0	0.0		0.0			
02/24/2023	14:11:59	0.0		0.0	0.0		0.0			
02/24/2023	14:13:39	0.0		0.0	0.0		0.0			
02/24/2023	14:15:19	0.0		0.0	0.0		0.0			
02/24/2023	14:16:36	0.0		0.0	0.0		0.0	Start Displacement (522.2 bbls)		
02/24/2023	14:16:59	0.0		0.0	0.0		0.0			
02/24/2023	14:17:00	0.0		0.0	0.0		0.0	Fresh Water + Sugar + Biocide (35bbls)		
02/24/2023	14:17:30	0.0		0.0	0.0		0.0	Fresh Water + Biocide		
02/24/2023	14:18:39	0.0		0.0	0.0		0.0			
02/24/2023	14:20:19	0.0		0.0	0.0		0.0			
02/24/2023	14:21:59	0.0		0.0	0.0		0.0			
02/24/2023	14:23:39	0.0		0.0	0.0		0.0			
02/24/2023	14:25:19	0.0		0.0	0.0		0.0			
02/24/2023	14:26:59	0.0		0.0	0.0		0.0			
02/24/2023	14:27:30	0.0		0.0	0.0		0.0	Good Returns		
02/24/2023	14:28:39	0.0		0.0	0.0		0.0			
02/24/2023	14:30:19	0.0		0.0	0.0		0.0			
02/24/2023	14:31:59	0.0		0.0	0.0		0.0			
02/24/2023	14:33:39	0.0		0.0	0.0		0.0			
02/24/2023	14:35:19	0.0		0.0	0.0		0.0			
02/24/2023	14:36:59	0.0		0.0	0.0		0.0			
02/24/2023	14:38:39	0.0		0.0	0.0		0.0			
02/24/2023	14:40:19	0.0		0.0	0.0		0.0			
02/24/2023	14:41:59	0.0		0.0	0.0		0.0			
02/24/2023	14:43:39	0.0		0.0	0.0		0.0			
02/24/2023	14:45:19	0.0		0.0	0.0		0.0			
02/24/2023	14:46:59	0.0		0.0	0.0		0.0			
02/24/2023	14:48:39	0.0		0.0	0.0		0.0			
02/24/2023	14:50:19	0.0		0.0	0.0		0.0			
02/24/2023	14:51:59	0.0		0.0	0.0		0.0			
02/24/2023	14:53:39	0.0		0.0	0.0		0.0			
02/24/2023	14:55:19	0.0		0.0	0.0		0.0			

Well			Field		Job Start		Customer		Job Number	
Berry Farms 8-5HZ			Wattenberg		Feb/24/2023		OXY USA WTP LP		EOIC-01142	
Date	Time 24-hr clock	Treating Pressure PSI	Flow Rate B/M	Density LB/G	Volume BBL	Message				
02/24/2023	14:58:39	0.0	0.0	0.0	0.0					
02/24/2023	15:00:19	0.0	0.0	0.0	0.0					
02/24/2023	15:01:59	0.0	0.0	0.0	0.0					
02/24/2023	15:03:39	0.0	0.0	0.0	0.0					
02/24/2023	15:05:19	0.0	0.0	0.0	0.0					
02/24/2023	15:06:59	0.0	0.0	0.0	0.0					
02/24/2023	15:08:39	0.0	0.0	0.0	0.0					
02/24/2023	15:10:19	0.0	0.0	0.0	0.0					
02/24/2023	15:11:59	0.0	0.0	0.0	0.0					
02/24/2023	15:13:39	0.0	0.0	0.0	0.0					
02/24/2023	15:15:19	0.0	0.0	0.0	0.0					
02/24/2023	15:16:59	0.0	0.0	0.0	0.0					
02/24/2023	15:18:39	0.0	0.0	0.0	0.0					
02/24/2023	15:20:19	0.0	0.0	0.0	0.0					
02/24/2023	15:21:59	0.0	0.0	0.0	0.0					
02/24/2023	15:23:39	0.0	0.0	0.0	0.0					
02/24/2023	15:25:19	0.0	0.0	0.0	0.0					
02/24/2023	15:28:39	0.0	0.0	0.0	0.0					
02/24/2023	15:30:19	0.0	0.0	0.0	0.0					
02/24/2023	15:31:59	0.0	0.0	0.0	0.0					
02/24/2023	15:33:39	0.0	0.0	0.0	0.0					
02/24/2023	15:35:19	0.0	0.0	0.0	0.0					
02/24/2023	15:36:59	0.0	0.0	0.0	0.0					
02/24/2023	15:38:39	0.0	0.0	0.0	0.0					
02/24/2023	15:40:19	0.0	0.0	0.0	0.0					
02/24/2023	15:41:59	0.0	0.0	0.0	0.0					
02/24/2023	15:43:39	0.0	0.0	0.0	0.0					
02/24/2023	15:44:00	0.0	0.0	0.0	0.0	64 bbls Spacer To Surface				
02/24/2023	15:44:10	0.0	0.0	0.0	0.0	Good Returns				
02/24/2023	15:45:19	0.0	0.0	0.0	0.0					
02/24/2023	15:46:59	0.0	0.0	0.0	0.0					
02/24/2023	15:48:39	0.0	0.0	0.0	0.0					
02/24/2023	15:50:19	0.0	0.0	0.0	0.0					
02/24/2023	15:51:59	0.0	0.0	0.0	0.0					
02/24/2023	15:53:39	0.0	0.0	0.0	0.0					
02/24/2023	15:54:00	0.0	0.0	0.0	0.0	Bump Plug - Hold Pressure				
02/24/2023	15:55:19	0.0	0.0	0.0	0.0					
02/24/2023	15:56:59	0.0	0.0	0.0	0.0					
02/24/2023	15:58:39	0.0	0.0	0.0	0.0					
02/24/2023	16:00:19	0.0	0.0	0.0	0.0					
02/24/2023	16:01:59	0.0	0.0	0.0	0.0					
02/24/2023	16:03:39	0.0	0.0	0.0	0.0					
02/24/2023	16:05:19	0.0	0.0	0.0	0.0					
02/24/2023	16:06:59	0.0	0.0	0.0	0.0					
02/24/2023	16:08:39	0.0	0.0	0.0	0.0					
02/24/2023	16:09:00	0.0	0.0	0.0	0.0	Bleed Off (6.5 bbls back)				
02/24/2023	16:09:30	0.0	0.0	0.0	0.0	Rig Down				
02/24/2023	16:10:19	0.0	0.0	0.0	0.0					
02/24/2023	16:11:59	0.0	0.0	0.0	0.0					
02/24/2023	16:13:39	0.0	0.0	0.0	0.0					
02/24/2023	16:15:19	0.0	0.0	0.0	0.0					
02/24/2023	16:16:59	0.0	0.0	0.0	0.0					
02/24/2023	16:20:19	0.0	0.0	0.0	0.0					
02/24/2023	16:21:59	0.0	0.0	0.0	0.0					

Well			Field		Job Start		Customer		Job Number	
Berry Farms 8-5HZ			Wattenberg		Feb/24/2023		OXY USA WTP LP		EOIC-01142	
Date	Time 24-hr clock	Treating Pressure PSI	Flow Rate B/M	Density LB/G	Volume BBL	Message				
02/24/2023	16:25:19	0.0	0.0	0.0	0.0					
02/24/2023	16:26:59	0.0	0.0	0.0	0.0					
02/24/2023	16:28:39	0.0	0.0	0.0	0.0					
02/24/2023	16:30:19	0.0	0.0	0.0	0.0					
02/24/2023	16:31:59	0.0	0.0	0.0	0.0					
02/24/2023	16:33:39	0.0	0.0	0.0	0.0					
02/24/2023	16:35:19	0.0	0.0	0.0	0.0					
02/24/2023	16:36:59	0.0	0.0	0.0	0.0					
02/24/2023	16:38:39	0.0	0.0	0.0	0.0					
02/24/2023	16:40:19	0.0	0.0	0.0	0.0					
02/24/2023	16:41:59	0.0	0.0	0.0	0.0					
02/24/2023	16:43:39	0.0	0.0	0.0	0.0					
02/24/2023	16:45:19	0.0	0.0	0.0	0.0					
02/24/2023	16:46:59	0.0	0.0	0.0	0.0					
02/24/2023	16:48:39	0.0	0.0	0.0	0.0					
02/24/2023	16:50:19	0.0	0.0	0.0	0.0					
02/24/2023	16:51:59	0.0	0.0	0.0	0.0					
02/24/2023	16:53:39	0.0	0.0	0.0	0.0					
02/24/2023	16:55:19	0.0	0.0	0.0	0.0					
02/24/2023	16:56:59	0.0	0.0	0.0	0.0					
02/24/2023	16:58:39	0.0	0.0	0.0	0.0					
02/24/2023	17:00:19	0.0	0.0	0.0	0.0					
02/24/2023	17:01:59	0.0	0.0	0.0	0.0					
02/24/2023	17:03:39	0.0	0.0	0.0	0.0					
02/24/2023	17:05:19	0.0	0.0	0.0	0.0					
02/24/2023	17:06:59	0.0	0.0	0.0	0.0					
02/24/2023	17:08:39	0.0	0.0	0.0	0.0					
02/24/2023	17:10:19	0.0	0.0	0.0	0.0					
02/24/2023	17:11:59	0.0	0.0	0.0	0.0					
02/24/2023	17:13:39	0.0	0.0	0.0	0.0					
02/24/2023	17:15:19	0.0	0.0	0.0	0.0					
02/24/2023	17:16:59	0.0	0.0	0.0	0.0					
02/24/2023	17:18:39	0.0	0.0	0.0	0.0					
02/24/2023	17:19:00	0.0	0.0	0.0	0.0	End Job				

Post Job Summary

Average Pump Rates, bbl/min					Volume of Fluid Injected, bbl			
Slurry	N2	Mud	Maximum Rate		Total Slurry 743.9	Mud	Spacer 80.0	N2
Treating Pressure Summary, psi					Breakdown Fluid			
Maximum 7151	Final 0	Average 1236	Bump Plug to 3076	Breakdown	Type FreshWater	Volume 939.7 bbl	Density 8.34 lb/gal	
Avg. N2 Percent %		Designed Slurry Volume 743.9 bbl	Displacement 522.2 bbl	Mix Water Temp 71 degF	Cement Circulated to Surface? <input type="checkbox"/>		Volume bbl	
					Washed Thru Perfs <input type="checkbox"/>		To ft	
Customer or Authorized Representative Nick Vasconcellos			Schlumberger Supervisor Dustin Krueger			Circulation Lost <input type="checkbox"/>		Job Completed <input checked="" type="checkbox"/>
						-		-