

## Inspection Photos

Location Name: TEP ROCKY MOUNTAIN LLC CLOUGH RMV 54-28 Pad

Location ID: 311583



Photo # 7850 From entrance to location



Photo # 7851 Location



**COLORADO**  
Oil & Gas Conservation  
Commission  
Department of Natural Resources

## Inspection Photos

Location Name: TEP ROCKY MOUNTAIN LLC CLOUGH RMV 54-28 Pad

Location ID: 311583



Photo # 7852 Location



Photo # 7853 Location



**COLORADO**  
Oil & Gas Conservation  
Commission  
Department of Natural Resources



## Inspection Photos

Location Name: TEP ROCKY MOUNTAIN LLC CLOUGH RMV 54-28 Pad

Location ID: 311583



Photo # 7854 Open ended load line



Photo # 3407 From inspection 708900173 conducted on 03/27/2023 Meter calibration info not conspicuously posted

## Inspection Photos

Location Name: TEP ROCKY MOUNTAIN LLC CLOUGH RMV 54-28 Pad

Location ID: 311583

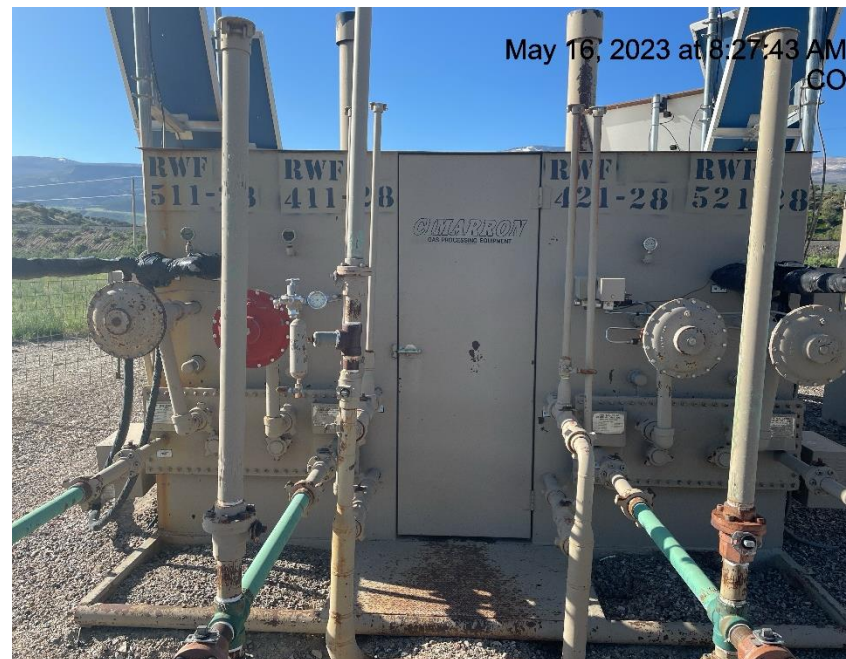


Photo # 7347 From Inspection 708900441 conducted on 05/09/2023 Meter calibration info not conspicuously posted

Photo # 7857 Meter calibration info not conspicuously posted



## Inspection Photos

Location Name: TEP ROCKY MOUNTAIN LLC CLOUGH RMV 54-28 Pad

Location ID: 311583



**Photo # 3409 From inspection 708900173 conducted on 03/27/2023 Meter calibration info not conspicuously posted**



**Photo # 7351 From inspection 708900441 conducted on 05/09/2023 Meter calibration info not conspicuously posted**

## Inspection Photos

Location Name: TEP ROCKY MOUNTAIN LLC CLOUGH RMV 54-28 Pad

Location ID: 311583



**Photo # 7861 Meter calibration info not conspicuously posted**



**Photo # 7360 From inspection 708900441 conducted on 05/09/2023 Open cellar/wildlife hazard  
(Cellar is off the north side of lease road approximately 1/10 of a mile from location)**



## Inspection Photos

Location Name: TEP ROCKY MOUNTAIN LLC CLOUGH RMV 54-28 Pad

Location ID: 311583



May 16, 2023 at 8:38:24 AM  
CO

**Photo # 7867 Open cellar/wildlife hazard (Cellar is off the north side of lease road approximately 1/10 of a mile from location)**



May 16, 2023 at 8:38:51 AM  
CO

**Photo # 7868 Open cellar/wildlife hazard**



**COLORADO**  
Oil & Gas Conservation  
Commission  
Department of Natural Resources



## Inspection Photos

Location Name: TEP ROCKY MOUNTAIN LLC CLOUGH RMV 54-28 Pad

Location ID: 311583



Photo # 7869 Open cellar/wildlife hazard



Photo # 7871 Open cellar/wildlife hazard



**COLORADO**  
Oil & Gas Conservation  
Commission  
Department of Natural Resources