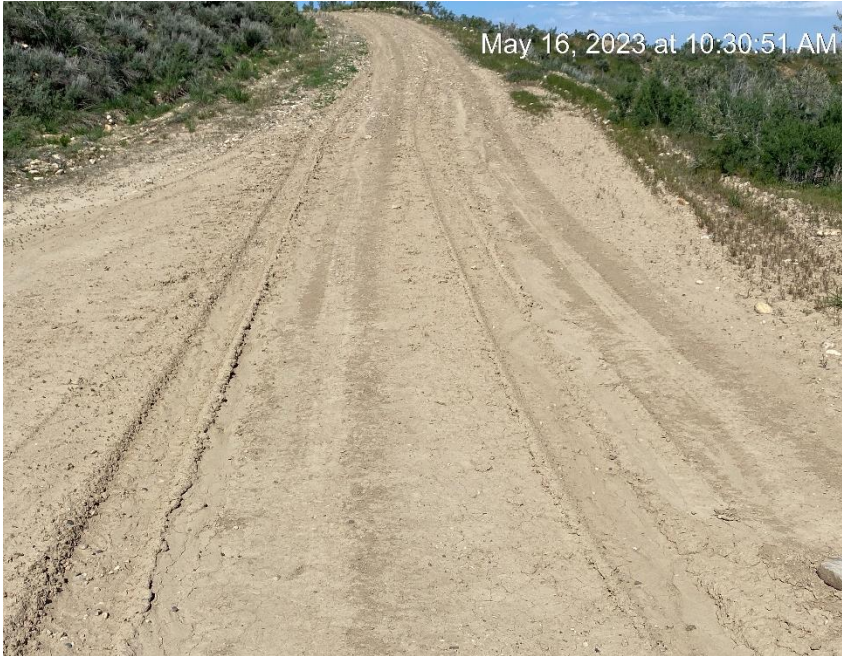


**Utah Gas Corporation  
Government C18983 6-1  
Location #315060**



**West side access road to location**



**West side entrance to location**

**Utah Gas Corporation  
Government C18983 6-1  
Location #315060**



**East side access road to location**



**East side entrance to location**



Utah Gas Corporation  
Government C18983 6-1  
Location #315060



**Open cellar**



**Full of liquid**

Utah Gas Corporation  
Government C18983 6-1  
Location #315060



No labels



Containments full

# Utah Gas Corporation Government C18983 6-1 Location #315060



Wellhead signage



Unused equipment? Out of service?

Utah Gas Corporation  
Government C18983 6-1  
Location #315060

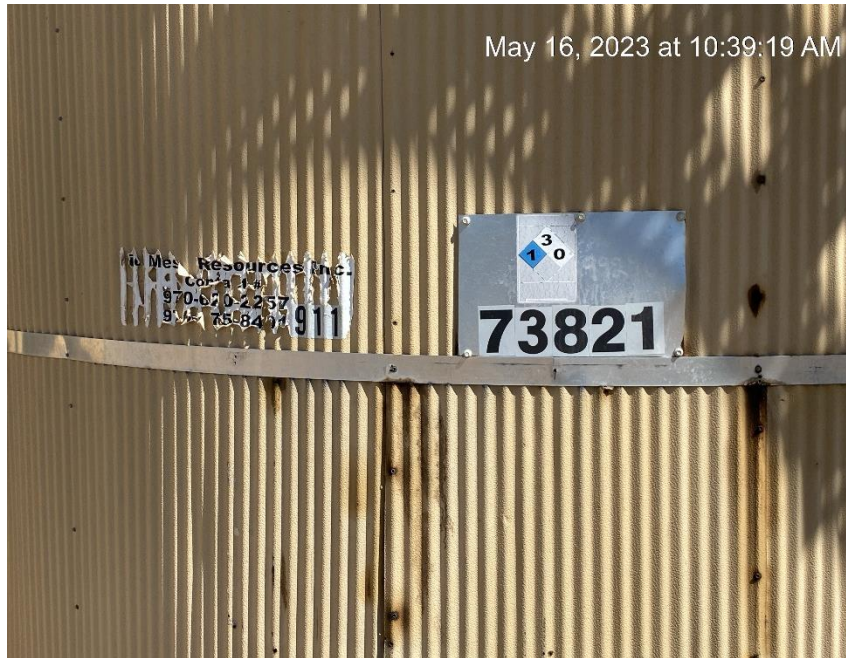


**Disconnected. Out of service?**

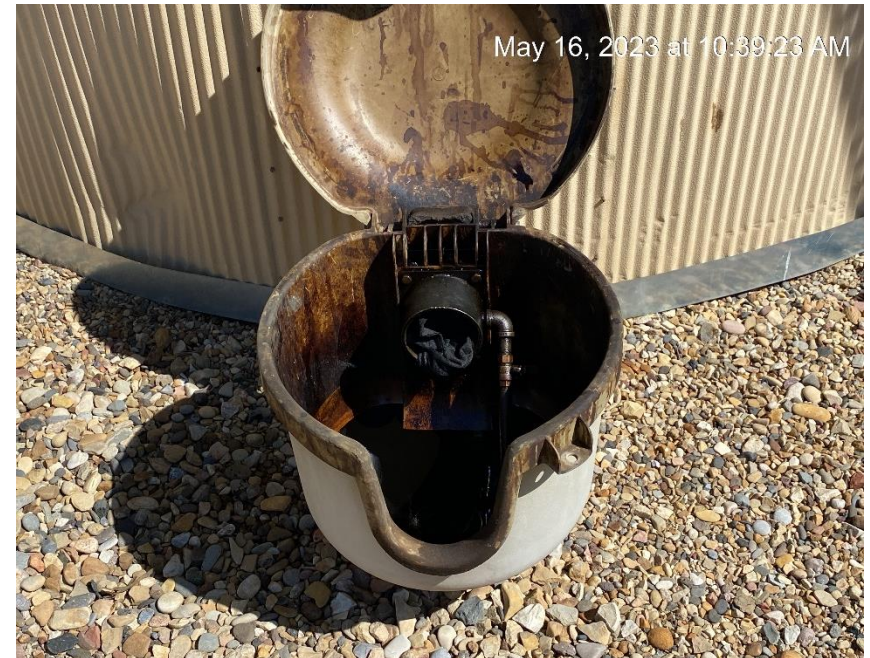


**Missing and outdated information**

Utah Gas Corporation  
Government C18983 6-1  
Location #315060



**Insufficient information on all tanks**



**Open end loadlines on crude oil tanks**

**Utah Gas Corporation  
Government C18983 6-1  
Location #315060**



**Debris inside tank battery**



**Debris along East access road**



# Utah Gas Corporation Government C18983 6-1 Location #315060



Tank battery sign lacking required information



Debris. Gas can next to tank heater.

**Utah Gas Corporation  
Government C18983 6-1  
Location #315060**



**Left and middle tanks without pumps. Unused equipment. Containments full.**



**Oil leak and stained soil**



Utah Gas Corporation  
Government C18983 6-1  
Location #315060



**Buried vent tank without sufficient berm**



**Downhill berm insufficient. No containment.**

**Utah Gas Corporation  
Government C18983 6-1  
Location #315060**



**West side culvert plugged off**



**East side erosion and sediment migration**

**Utah Gas Corporation  
Government C18983 6-1  
Location #315060**



**Sediment migration leaving location**



**Sediment migration leaving location**

**Utah Gas Corporation  
Government C18983 6-1  
Location #315060**



**Berm erosion and sediment migration**



**Erosion and sediment migration**

**Utah Gas Corporation  
Government C18983 6-1  
Location #315060**



**Location view from Northwest corner**



**Location view from Southwest corner**

**Utah Gas Corporation  
Government C18983 6-1  
Location #315060**



**Location view from Southeast corner**



**Location view from Northeast corner**