

# Stormwater Management and Erosion control

## Location Name: CAERUS PICEANCE LLC BENTLEY-67S95W /11SWNE

### Location #: 334625

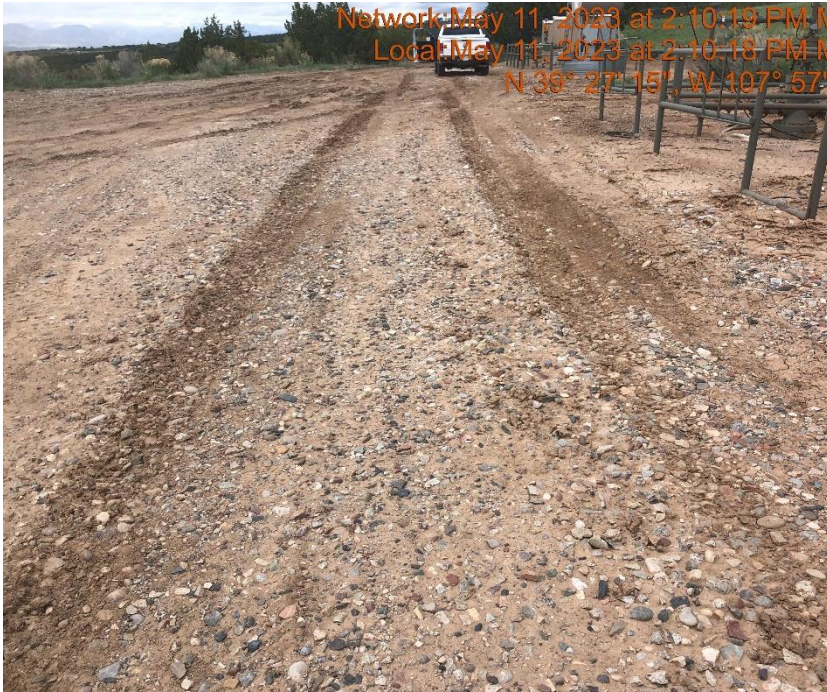


**Location Overview: Location is located in a high priority habitat area.**

**Section/Township/Range: 11 7S95W**



**Stormwater Management and Erosion control**  
**Location Name: CAERUS PICEANCE LLC BENTLEY-67S95W /11SWNE**  
**Location #: 334625**



**Photo #9948 Location lacks stabilization.**



**Photo #9949 Location lacks stabilization.**



**Stormwater Management and Erosion control**  
**Location Name: CAERUS PICEANCE LLC BENTLEY-67S95W /11SWNE**  
**Location #: 334625**



**Photo #9947 Location lacks stabilization.**

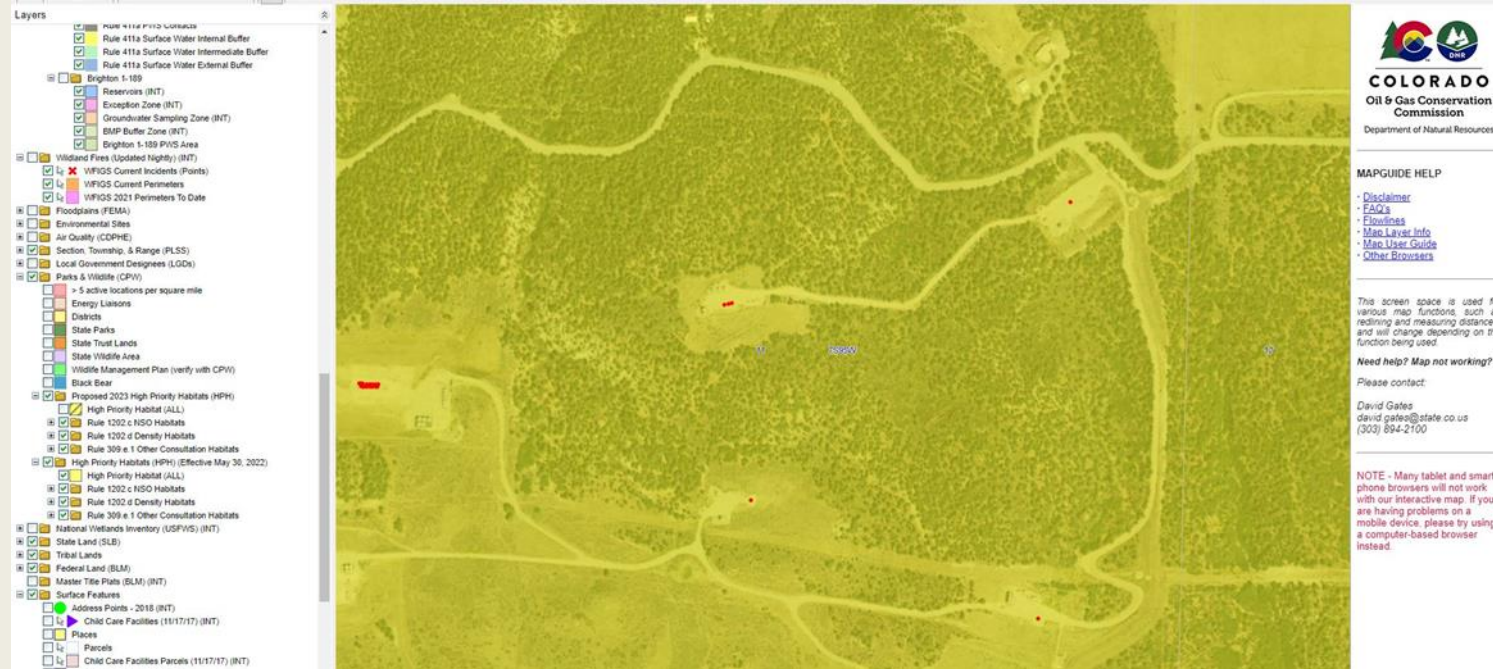


**Photo #9950 Insufficient tracking BMP at entrance to minimize the transport of sediment.**

# Stormwater Management and Erosion control

## Access Road/Assoc. Location Name: CAERUS PICEANCE LLC BENTLEY-67S95W /11SWNE

### Access Road/Assoc. Location #:



Access Road overview: Access road is located in a High priority habitat area.

Section/Township/Range: 11 7S95W



## Stormwater Management and Erosion control

Access Road/Assoc. Location Name: CAERUS PICEANCE LLC BENTLEY-67S95W /11SWNE

Access Road/Assoc. Location #: 334625



Photo #9952 Access road lacks stabilization.



Photo #9953 Access road lacks stabilization.



## Stormwater Management and Erosion control

Access Road/Assoc. Location Name: CAERUS PICEANCE LLC BENTLEY-67S95W /11SWNE

Access Road/Assoc. Location #: 334625



Photo #9954 Access road lacks stabilization.



Photo #9955 Access road lacks stabilization.

## Stormwater Management and Erosion control

Access Road/Assoc. Location Name: CAERUS PICEANCE LLC BENTLEY-67S95W /11SWNE

Access Road/Assoc. Location #: 334625



**Photo #9958 Insufficient tracking BMP at entrance to access road to minimize the transport of sediment.**