

From: [Chris Ogbonna](#)
To: [McFarland - DNR, Nick](#)
Cc: [TJ Hanneman](#); [Michael Schwarz](#); [Adam Conry](#); [Regulatory](#); [Randy Williams](#)
Subject: RE: Lamb 31-15 & Lamb 15C
Date: Tuesday, March 28, 2023 10:35:44 AM
Attachments: [image001.png](#)
[image002.png](#)
[image003.png](#)
[image004.png](#)

Sounds good, no problem.

Chris Ogbonna

Production Engineer

Cell: (720) 435 – 9250 | Direct: (303) 294 – 7877

650 Southgate Drive | Windsor, CO | 80550

www.civitasresources.com | NYSE: CIVI



From: McFarland - DNR, Nick <nick.mcfarland@state.co.us>
Sent: Tuesday, March 28, 2023 10:32 AM
To: Chris Ogbonna <cogbonna@civiresources.com>
Cc: TJ Hanneman <thanneman@civiresources.com>; Michael Schwarz <mschwarz@civiresources.com>; Adam Conry <aconry@civiresources.com>; Regulatory <regulatory@civiresources.com>; Randy Williams <rwilliams@civiresources.com>
Subject: Re: Lamb 31-15 & Lamb 15C

No questions at this time. Thank you for the update.

On Tue, Mar 28, 2023 at 10:19 AM Chris Ogbonna <cogbonna@civiresources.com> wrote:

Morning Nick,

Following up again on the Lamb wells P&A Ops. We've plugged the 31-15 up to surface – completed on Friday. We confirmed static conditions at 500' before we brought cement to surface. We let the 31-15 sit over the weekend after setting the surface plug and have verified no migration from the well on Monday.

We're currently rigged up on the Lamb 15C with a similar plan to that of the Lamb 31-15. Well was on a slight vacuum this morning before we began circulation. We're planning on pumping a 200' thixo balance plug from 650' to 450' – this plug will cover the 25' underreamed section and the surface casing shoe. We'll shutdown for the night, monitor and verify static conditions tomorrow before bringing cement to surface.

Please let me know if you have any questions,

Thanks

Chris Ogbonna

Production Engineer

cell: (720) 435 – 9250 | Direct: (303) 294 – 7877

650 Southgate Drive | Windsor, CO | 80550

www.civitasresources.com | NYSE: CIVI



From: McFarland - DNR, Nick <nick.mcfarland@state.co.us>
Sent: Wednesday, March 22, 2023 1:41 PM
To: Chris Ogbonna <cogbonna@civiresources.com>
Cc: TJ Hanneman <thanneman@civiresources.com>; Michael Schwarz <mschwarz@civiresources.com>; Adam Conry <aconry@civiresources.com>; Regulatory <regulatory@civiresources.com>; Randy Williams <rwilliams@civiresources.com>
Subject: Re: Lamb 31-15 & Lamb 15C

Great, thanks for the update.

On Wed, Mar 22, 2023 at 12:51 PM Chris Ogbonna <cogbonna@civiresources.com> wrote:

Good Afternoon Nick,

Sending over an update on the Lamb wells. We're rigged back up on the Lamb 31-15. Pressure was at 0.23 psi prior to rig up. Loaded the well back up with mud yesterday before shutting down and came back this morning and seeing small bubbles every 20-30 sec, no LEL's detected.

We plan on pumping cement in 2 stages, first pump up to 500' (50' into the SC) and shutting down. We'll then verify static conditions after overnight WOC before bringing cement from 500' to surface.

Please let me know if you have any questions, or concerns.

Thanks,

Christopher Ogbonna

Production Engineer

cell: (720) 435 – 9250 | Direct: (303) 294 – 7877

650 Southgate Drive | Windsor, CO | 80550

www.civitasresources.com | NYSE: CIVI



From: TJ Hanneman <thanneman@civiresources.com>

Sent: Wednesday, March 8, 2023 9:51 AM

To: McFarland - DNR, Nick <nick.mcfarland@state.co.us>

Cc: Michael Schwarz <mschwarz@civiresources.com>; Chris Ogbonna <cogbonna@civiresources.com>

Subject: RE: Lamb 31-15 & Lamb 15C

Great, thank you Nick. We will be in touch as schedule and plans progress.

Thanks,

TJ Hanneman

Sr Production Engineer

Direct 303-312-8783 | Cell 303-947-7213

555 17th Street | Suite 3500 | Denver, CO | 80202

www.civitasresources.com | NYSE: CIVI



From: McFarland - DNR, Nick <nick.mcfarland@state.co.us>

Sent: Wednesday, March 8, 2023 9:47 AM

To: TJ Hanneman <thanneman@civiresources.com>

Cc: Michael Schwarz <mschwarz@civiresources.com>; Chris Ogbonna <cogbonna@civiresources.com>

Subject: Re: Lamb 31-15 & Lamb 15C

Thank you for the reference WBD's.

As discussed over the phone I'm fine with proceeding to rig back up and finish these out barring any negative change in the current pressure readings.

I know there are some potential logistical concerns with the landowner so just keep me posted as you better understand timing.

On Wed, Mar 8, 2023 at 9:41 AM TJ Hanneman <thanneman@civiresources.com> wrote:

Nick - following up to our conversation this morning. Here are WBDs for each well. Both were swabbed down past 600 ft, tubing was pulled out of each. Let us know what you find out and then we can talk. Again, we will have to see where surface land is at with conversation with farmer in the area.



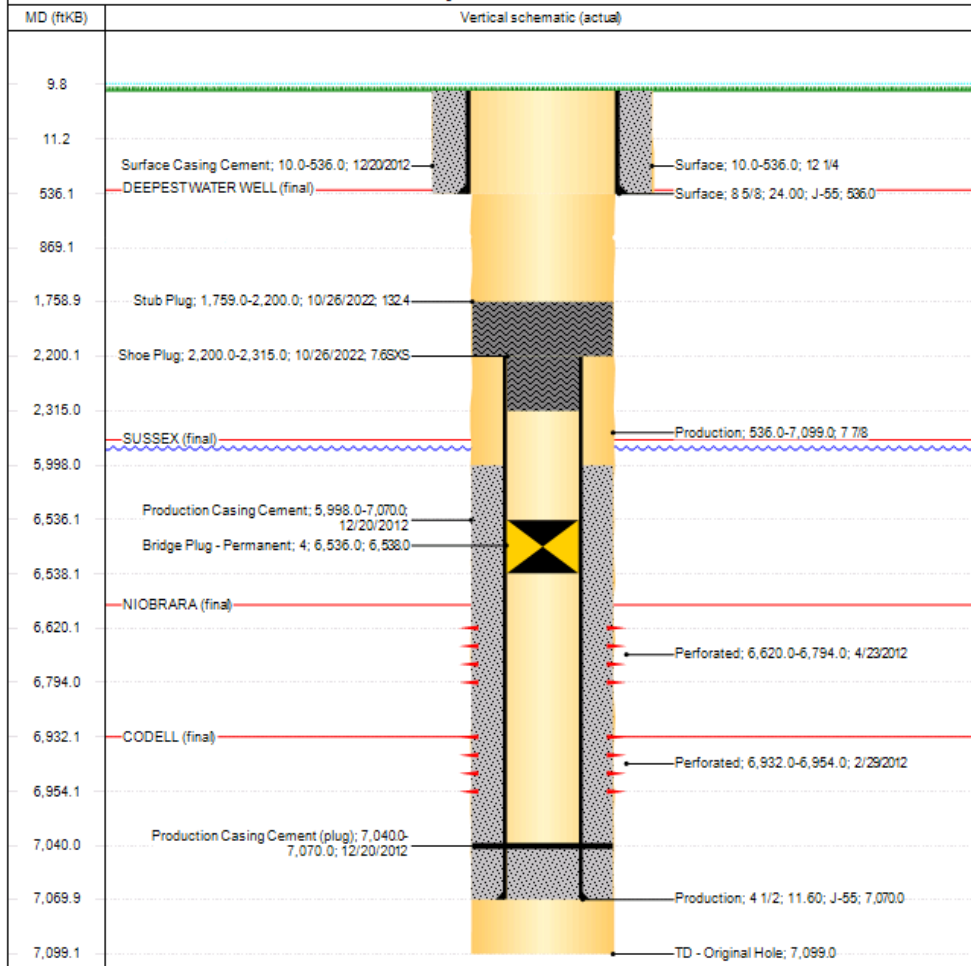
Abandon Wellbore Diagram

Well Name: LAMB 15C

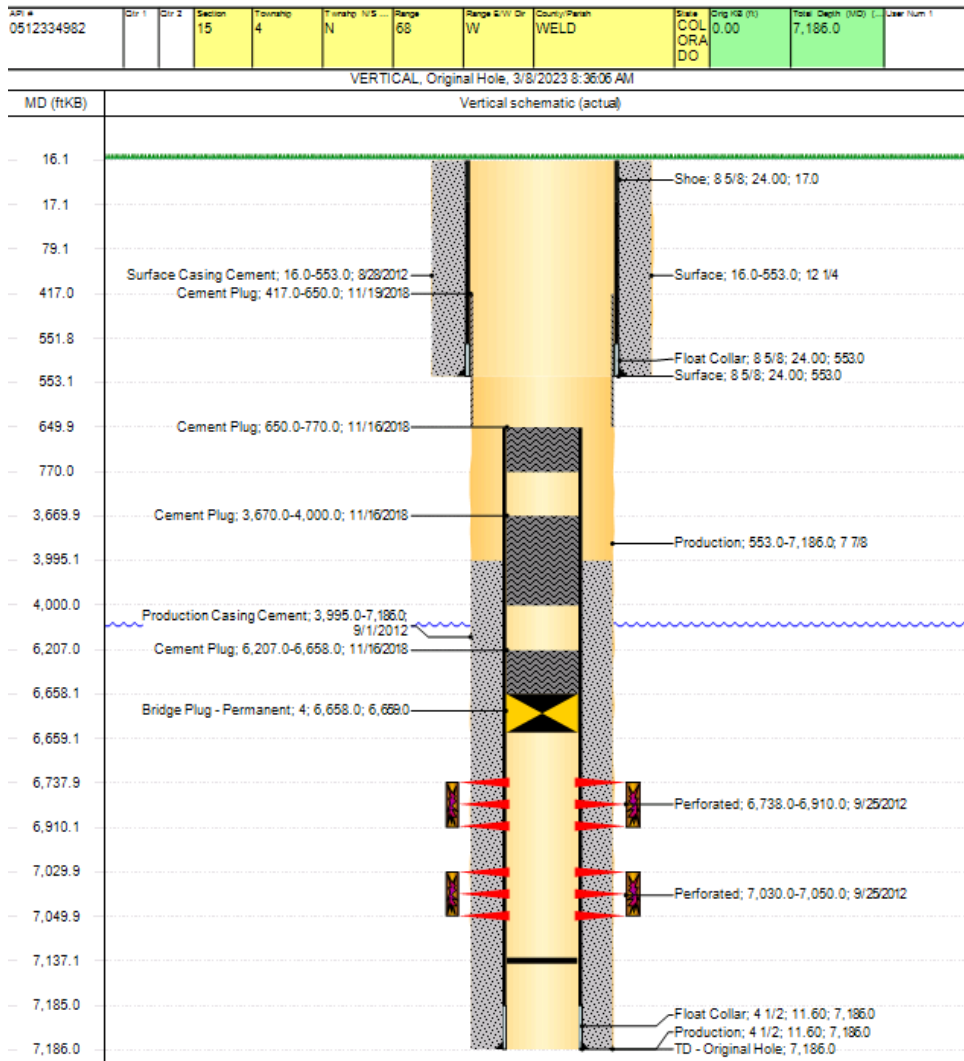
Reference Wells	
Type Sussex	Comment no production within 1 mile

Well #	Dir 1	Dir 2	Section	Footwall	Fracture N/S	Range	Range S/W Dr	County/Parish	State	Orig G/L (ft)	Total Depth (MD) (ft)	Layer Num 1
0512334986			15	4	N	6S	W	WELD	COL ORA DO	10.00	7,099.0	

VERTICAL, Original Hole, 3/8/2023 9:28:36 AM



Well Name: LAMB 31-15



Thanks,

TJ Hanneman

Sr Production Engineer

Direct 303-312-8783 | Cell 303-947-7213

555 17th Street | Suite 3500 | Denver, CO | 80202

www.civitasresources.com | NYSE: CIVI



From: TJ Hanneman <thanneman@civiresources.com>

Sent: Tuesday, March 7, 2023 8:49 PM

To: McFarland - DNR, Nick <nick.mcfarland@state.co.us>; Michael Schwarz <mschwarz@civiresources.com>; Chris Ogbonna <cogbonna@civiresources.com>

Subject: Re: Lamb 31-15 & Lamb 15C

Evening, Nick. Wanted to give you an update on the Lambs as Chris O is on PTO. I will call you before our scheduled COGCC meeting in the morning to discuss real quick. Have a good one.

Thanks,

TJ Hanneman
Sr Production Engineer
Direct 303-312-8783 | Cell 303-947-7213
555 17th Street | Suite 3500 | Denver, CO | 80202
www.civitasresources.com | NYSE: CIVI

From: McFarland - DNR, Nick <nick.mcfarland@state.co.us>
Sent: Tuesday, December 20, 2022 10:34:24 AM
To: Chris Ogbonna <cogbonna@civiresources.com>
Cc: TJ Hanneman <thanneman@civiresources.com>; Michael Schwarz <mschwarz@civiresources.com>; Adam Conry <aconry@civiresources.com>; Randy Williams <rwilliams@civiresources.com>; Regulatory <regulatory@civiresources.com>; James Miller <jmiller@civiresources.com>
Subject: Re: Lamb 31-15 & Lamb 15C

New sundries at this point would be great given we don't know exactly how long they will be tied into the Mesco units.

On Tue, Dec 20, 2022 at 10:29 AM Chris Ogbonna <cogbonna@civiresources.com> wrote:

Morning Nick,

The Lamb wells are both now tied to a Messco unit in efforts to completely alleviate all pressure from well as previously communicated. Would you like to see a new Bradenhead FM4 submitted detailing this plan? Or would you rather a follow up post-P&A FM4 submittal?

Lamb 15C | API: 05-123-34986
Lamb 31-15 | API: 05-123-34982

Thanks,

Chris Ogbonna

Production Engineer
cell: (720) 435 – 9250 | Direct: (303) 294 – 7877
650 Southgate Drive | Windsor, CO | 80550
www.civitasresources.com | NYSE: CIVI



From: McFarland - DNR, Nick <nick.mcfarland@state.co.us>
Sent: Monday, December 12, 2022 8:14 AM
To: Chris Ogbonna <cogbonna@civiresources.com>
Cc: TJ Hanneman <thanneman@civiresources.com>; Michael Schwarz <mschwarz@civiresources.com>; Adam Conry <aconry@civiresources.com>; Randy Williams <rwilliams@civiresources.com>; Regulatory <regulatory@civiresources.com>
Subject: Re: Lamb 31-15 Re-Entry P&A (API: 05-123-34982)

I appreciate the update Chris.

On Mon, Dec 12, 2022 at 8:03 AM Chris Ogbonna <cogbonna@civiresources.com> wrote:

Morning Nick,

Hope you had a good weekend, sending over a quick progress update on the Lamb 15C. We're still rigged up on well, seeing overnight buildup pressure of less than 1 psi during last week operations. Pressure bleeds off quickly with no LEL detected.

With the surface plug drilled out, we've been working to identify where our migration is coming from. We've sent a camera downhole with good visibility but weren't seeing any bubbles. Under-reamed from 600' to 625' and set a packer at 613' just before the weekend. Came back today and seeing pressure on casing and 0 psi on tubing – migration most likely coming from above the set depth.

Plan is to swab down to ~ 625' and put well on similar blowdown program as the Lamb 31-15 to come back later when pressures are exhausted to complete the P&A.

Please let me know if you have any questions, thoughts, or concerns,

Chris Ogbonna

Production Engineer

Cell: (720) 435 – 9250 | Direct: (303) 294 – 7877

650 Southgate Drive | Windsor, CO | 80550

www.civitasresources.com | NYSE: CIVI



From: Chris Ogbonna

Sent: Tuesday, November 8, 2022 7:57 AM

To: McFarland - DNR, Nick <nick.mcfarland@state.co.us>

Cc: TJ Hanneman <thanneman@civiresources.com>; Michael Schwarz <mschwarz@civiresources.com>; Adam Conry <aconry@civiresources.com>; Randy Williams <rwilliams@civiresources.com>; Dave Magruder <dmagruder@civiresources.com>; Regulatory <regulatory@civiresources.com>

Subject: RE: Lamb 31-15 Re-Entry P&A (API: 05-123-34982)

Hi Nick,

Good Morning, sending over a quick progress update on the Lamb 31-15. We opted to run an open-hole packer first before attempting to go deeper. We set it at 600' and saw pressure above the packer and 0 psi below. We decided against getting below the stub since we weren't seeing any pressure below the set depth. We've circulated out the well numerous times in efforts to get as much gas out of the well as possible. We'll be swabbing the well down and rigging off to vent out the gas over time, and return later to complete the P&A.

We'll be rigging over to Lamb 15C to re-enter, we found migration through the surface plug. We'll be drilling out the surface plug and running diagnostic tests to determine where the migration is coming from.

Let me know if you have any questions,

Thanks,

Chris Ogbonna

Production Engineer

Cell: (720) 435 – 9250 | Direct: (303) 294 – 7877

650 Southgate Drive | Windsor, CO | 80550

www.civitasresources.com | NYSE: CIVI



From: McFarland - DNR, Nick <nick.mcfarland@state.co.us>

Sent: Wednesday, November 2, 2022 12:35 PM

To: Chris Ogbonna <cogbonna@civiresources.com>

Cc: TJ Hanneman <thanneman@civiresources.com>; Michael Schwarz <mschwarz@civiresources.com>; Adam Conry <aconry@civiresources.com>; Randy Williams <rwilliams@civiresources.com>; Dave Magruder <dmagruder@civiresources.com>; Regulatory <regulatory@civiresources.com>

Subject: Re: Lamb 31-15 Re-Entry P&A (API: 05-123-34982)

Thank you for the update.

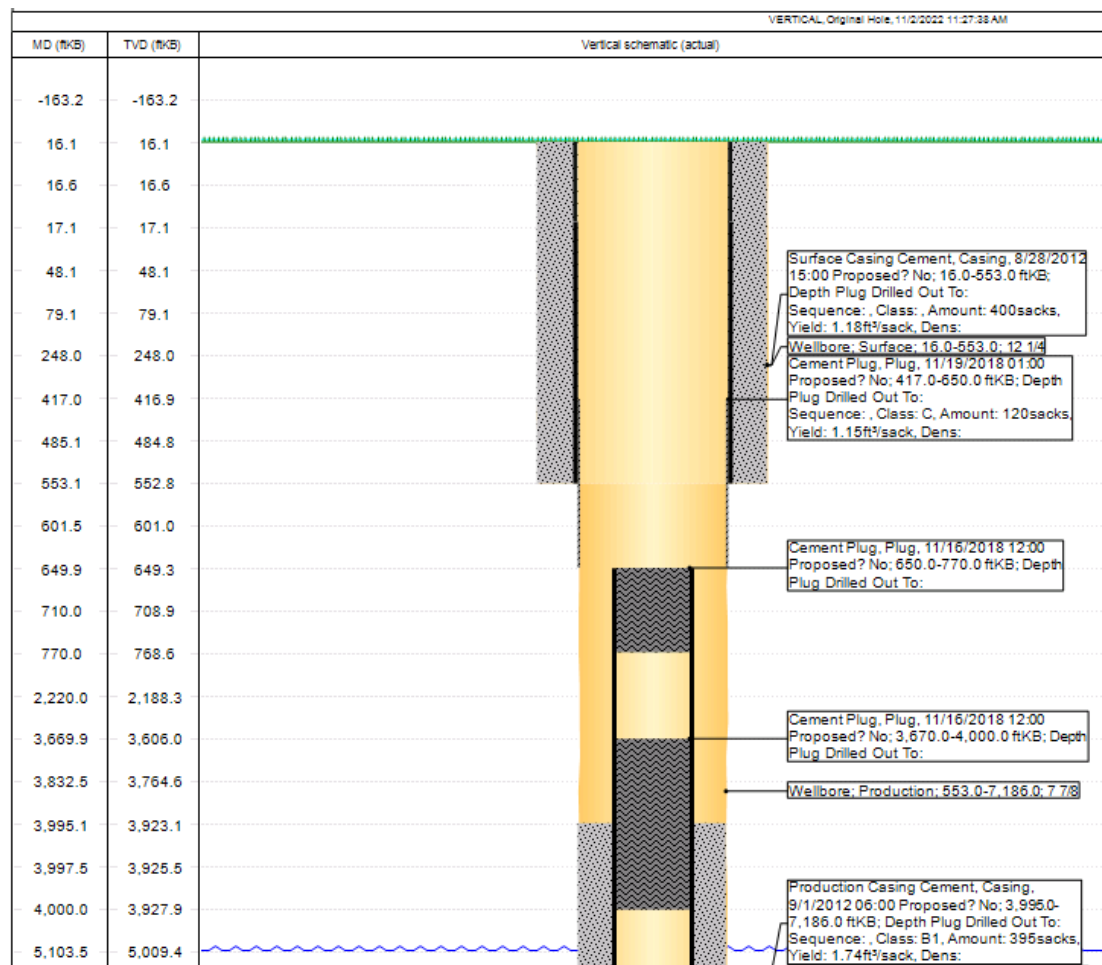
On Wed, Nov 2, 2022 at 12:23 PM Chris Ogbonna <cogbonna@civiresources.com> wrote:

Morning Nick,

We moved off the subject well earlier this year to come back later and wrap up the P&A because of the Oxy offset frac operation being relatively close. We're currently rigged up on the well and I wanted to provide you with a quick update on how things are progressing.

We went in hole and tagged TOC at 650' as expected; circulated and shutdown. We came back the following day and seeing pressure and migration from well. We'll washover the ~ 120' casing plug to cut/work deeper in efforts to shutting off the migration.

Let me know if you have any questions,



Thanks,

Chris Ogbonna

Production Engineer

cell: (720) 435 – 9250 | Direct: (303) 294 – 7877

650 Southgate Drive | Windsor, CO | 80550

www.civitasresources.com | NYSE: CIVI



If immediate assistance is needed please give me a call.

Nick McFarland

Central Area Engineer

[Redacted]

P 720.446.8276 | F 303.894.2109

nick.mcfarland@state.co.us | www.colorado.gov/cogcc

--

If immediate assistance is needed please give me a call.

Nick McFarland

Central Area Engineer

[Redacted]

P 720.446.8276 | F 303.894.2109

nick.mcfarland@state.co.us | www.colorado.gov/cogcc

--

If immediate assistance is needed please give me a call.

Nick McFarland

Central Area Engineer

[Redacted]

P 720.446.8276 | F 303.894.2109

nick.mcfarland@state.co.us | www.colorado.gov/cogcc

--

If immediate assistance is needed please give me a call.

Nick McFarland

Central Area Engineer


P 720.446.8276 | F 303.894.2109

nick.mcfarland@state.co.us | www.colorado.gov/cogcc

--

If immediate assistance is needed please give me a call.

Nick McFarland
Central Area Engineer


P 720.446.8276 | F 303.894.2109

nick.mcfarland@state.co.us | www.colorado.gov/cogcc

--

If immediate assistance is needed please give me a call.

Nick McFarland
Central Area Engineer


P 720.446.8276 | F 303.894.2109

nick.mcfarland@state.co.us | www.colorado.gov/cogcc