

WELL PAD LOCATION PICTURES
VISTA 13-16HZ

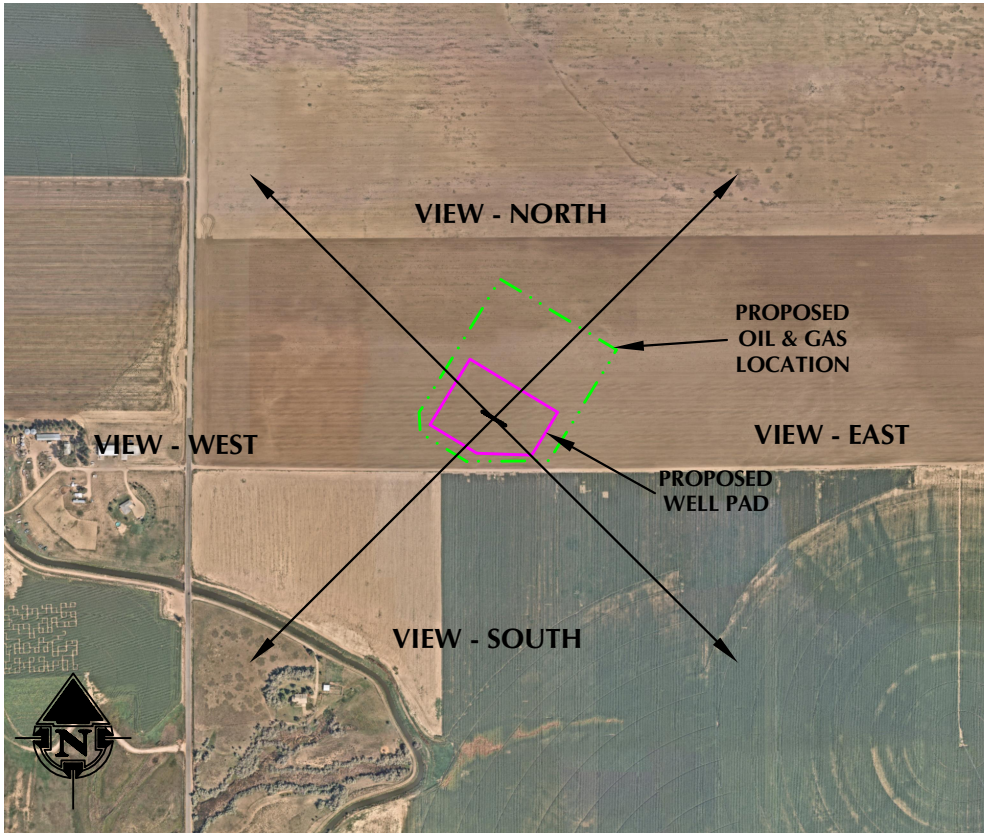
S1/2 SW1/4 SECTION 16, TOWNSHIP 5 NORTH, RANGE 67 WEST, 6TH P.M., GREELEY, COLORADO



LOCATION PICTURE OF VISTA 13-16HZ WELL PAD - CAMERA VIEW NORTH



LOCATION PICTURE OF VISTA 13-16HZ WELL PAD - CAMERA VIEW SOUTH



VIEW - OVERHEAD
AERIAL IMAGERY COURTESY OF NEARMAP
2022-09-04



LOCATION PICTURE OF VISTA 13-16HZ WELL PAD - CAMERA VIEW EAST



LOCATION PICTURE OF VISTA 13-16HZ WELL PAD - CAMERA VIEW WEST



LOVELAND OFFICE
6706 North Franklin Avenue
Loveland, Colorado 80538
Phone 970-776-4331

SHERIDAN OFFICE
1095 Saberton Avenue
Sheridan, Wyoming 82801
Phone 307-674-0609

CONSULTING, LLC

**Kerr-McGee Oil &
Gas Onshore LP**
**1099 18th Street
Denver, Colorado 80202**

DATE SURVEYED: 11/21/22
DATE: 12/7/22
DRAFTER: HJL
REVISED:

DATA SOURCES:
-AERIAL IMAGERY COURTESY OF NEARMAP.