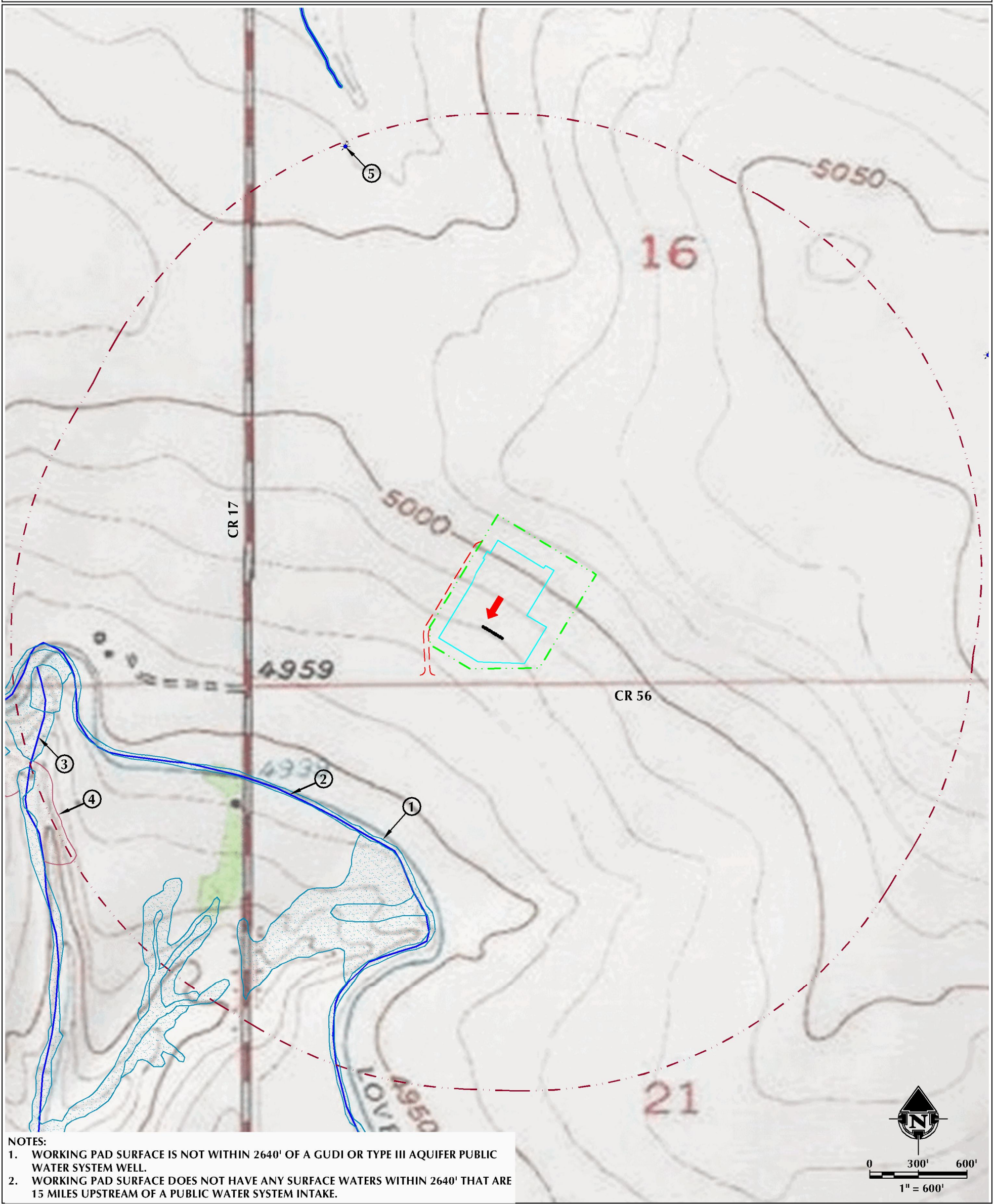


HYDROLOGY MAP

VISTA 13-16HZ

HORIZONTAL MULTI-WELL PAD

S1/2 SW1/4 SECTION 16, TOWNSHIP 5 NORTH, RANGE 67 WEST, 6TH P.M., GREELEY, COLORADO



NOTES:

- WORKING PAD SURFACE IS NOT WITHIN 2640' OF A GUDI OR TYPE III AQUIFER PUBLIC WATER SYSTEM WELL.
- WORKING PAD SURFACE DOES NOT HAVE ANY SURFACE WATERS WITHIN 2640' THAT ARE 15 MILES UPSTREAM OF A PUBLIC WATER SYSTEM INTAKE.

- NWI RIVERINE/POND/WETLAND AREAS ARE ±1245' SW, ±1278' SW, ±1482' SW, ±2105' SW, ±2225' SW, ±2274' W & ±2341' W.
- LOVELAND AND GREELEY CANAL IS ±1272' SW.
- EXISTING DRAINAGE/DITCH IS ±2457' W.
- NWI RIPARIAN AREA IS ±2547' W.
- EXISTING WATER WELL (PERMIT #32201-MH, PERMIT ISSUED) IS ±2610' N.

609 CONSULTING, LLC

LOVELAND OFFICE
6706 North Franklin Avenue
Loveland, Colorado 80538
Phone: 970-776-4331

SHERIDAN OFFICE
1095 Saberton Avenue
Sheridan, Wyoming 82801
Phone: 307-674-6069

DATE SURVEYED: 11/21/22

DATE: 12/7/22

DRAFTER: HJL

REVISED:

DATA SOURCES & NOTES:

- TOPOGRAPHIC MAP IS COURTESY OF USGS.

- WATER WELLS COURTESY OF COLORADO DIVISION OF WATER RESOURCES.

- MANY FEATURES ON THIS MAP COME FROM PUBLICLY AVAILABLE DATA AND SURFACE WATER LYING OUTSIDE THE SURFACE PROPERTY MAY HAVE BEEN OBTAINED FROM AERIAL IMAGERY. THE ACCURACY AND COMPLETENESS OF SAID DATA HAS NOT BEEN VERIFIED BY 609 CONSULTING, LLC. EXISTING CONDITIONS MAY DIFFER FROM WHAT IS SHOWN.

PROPOSED WELL

WATER WELL

PROPOSED ACCESS ROAD

DITCH/CANAL/DRAINAGE

DOWNGRADIENT

2640' WORKING PAD SURFACE BUFFER

PROPOSED OIL & GAS LOCATION

WORKING PAD SURFACE

100-YEAR FLOODPLAIN (PRELIMINARY, 2020)

100-YEAR FLOODWAY (PRELIMINARY, 2020)

100-YEAR FLOODPLAIN (EFFECTIVE, 2016)

NWI RIVERINE/POND/WETLAND

NWI RIPARIAN AREA

ALL MEASUREMENTS ARE MADE FROM NEAREST EDGE OF WORKING PAD SURFACE

PREPARED FOR:
Kerr-McGee Oil & Gas Onshore LP

K:\ANADARKO\2021\2021_LUP_VISTA_TSHL_R67W_SEC_16\DWG\HYDROLOGY\OPTION_1_TSHL_R67W_SEC_16.DWG, 12/7/2022 2:48:39 PM, dlevan