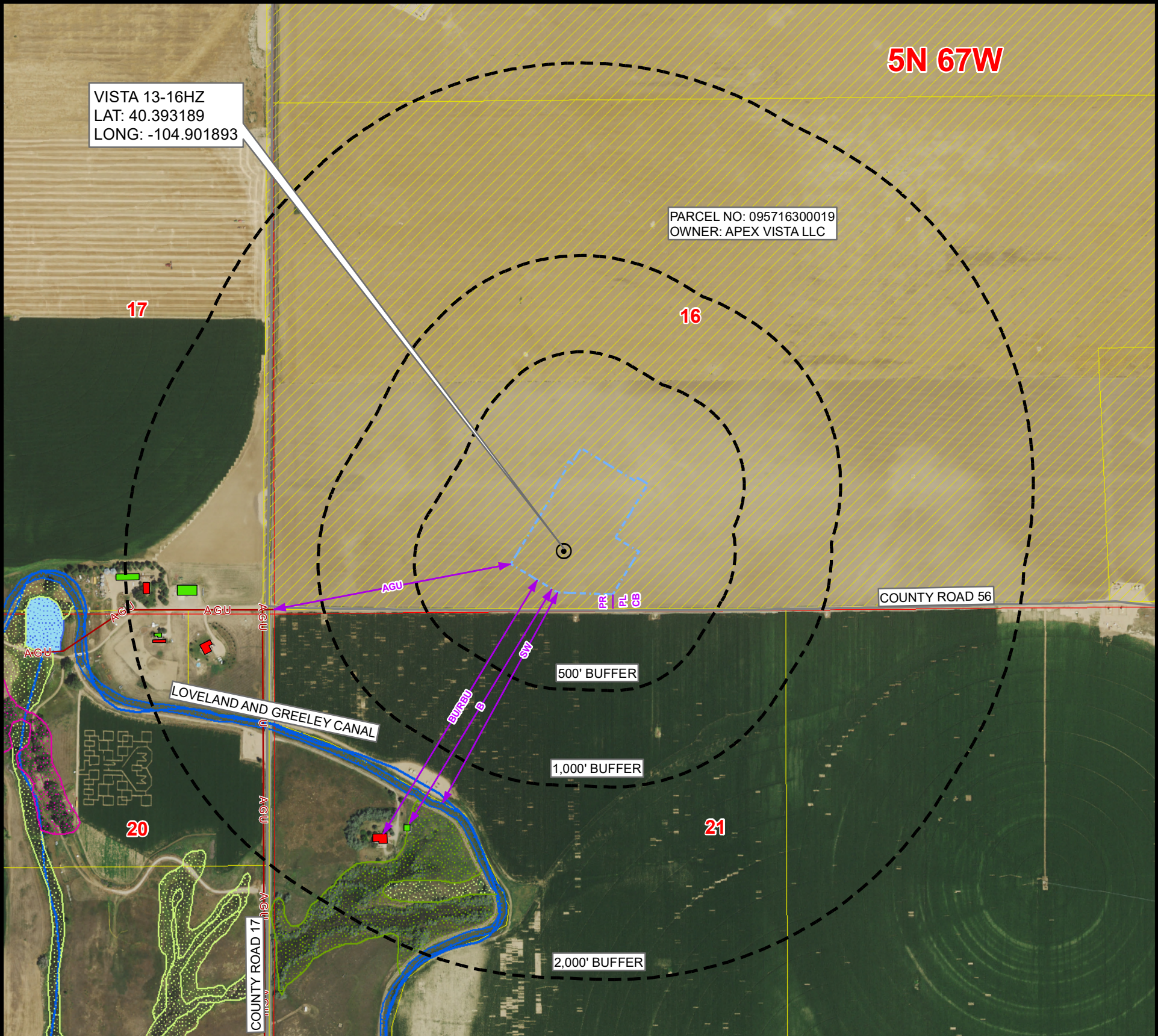


# CULTURAL FEATURES MAP VISTA 13-16HZ

SECTION 16, TOWNSHIP 5 NORTH, RANGE 67 WEST, 6TH P.M., GREELEY, COLORADO



VISTA 13-16HZ  
LAT: 40.393189  
LONG: -104.901893

PARCEL NO: 095716300019  
OWNER: APEX VISTA LLC

5N 67W

17

16

20

21

COUNTY ROAD 56

LOVELAND AND GREELEY CANAL

COUNTY ROAD 17

500' BUFFER

1,000' BUFFER

2,000' BUFFER

# OF CULTURAL FEATURES WITHIN	0-500 FEET	501-1,000 FEET	1,001-2,000 FEET
BUILDING UNIT (RESIDENTIAL & NON-RESIDENTIAL)	0	0	4
RESIDENTIAL BUILDING UNIT	0	0	4
HIGH OCCUPANCY BUILDING UNIT	0	0	0
SCHOOL PROPERTY	0	0	0
SCHOOL FACILITY	0	0	0
DESIGNATED OUTSIDE ACTIVITY AREA	0	0	0

MEASURED FROM THE NEAREST		EDGE OF WORKING PAD
B	BUILDING	±1426' SW
BU	BUILDING UNIT	±1542' SW
RBU	RESIDENTIAL BUILDING UNIT	±1542' SW
HOB	HIGH OCCUPANCY BUILDING UNIT	2000'+
DOAA	DESIGNATED OUTSIDE ACTIVITY AREA	2000'+
PR	PUBLIC ROAD	±74' S
AGU	ABOVE GROUND UTILITY	±1252' W
RR	RAILROAD	2000'+
PL	PROPERTY LINE	±60' S
S	SCHOOL FACILITY	2000'+
CC	CHILD CARE CENTER	2000'+
DIC	DISPROPORTIONATELY IMPACTED COMMUNITY BOUNDARY	2000'+
MB	MUNICIPALITY BOUNDARY	±0'
CB	COUNTY BOUNDARY	±60' S
SW	SURFACE WATER	±1245' SW
PWS	PUBLIC WATER SYSTEM SUPPLY WELL	2000'+
HPH	HIGH PRIORITY HABITAT	2000'+
RHSD	RBU, HOB, OR SCHOOL FACILITY WITHIN A DI COMMUNITY	2000'+

NOTE:  
THIS MAP IS A COMPILATION OF PUBLICLY AVAILABLE DATA. THE ACCURACY AND COMPLETENESS OF SAID DATA HAS NOT BEEN VERIFIED BY 609 CONSULTING, LLC. EXISTING CONDITIONS MAY DIFFER FROM WHAT IS SHOWN.

### Legend

- PROPOSED REFERENCE POINT
- PROPOSED WORKING PAD SURFACE
- BUFFER
- BUILDING
- NON-RESIDENTIAL BUILDING UNIT
- RESIDENTIAL BUILDING UNIT
- HEALTH FACILITY
- SCHOOL FACILITY
- CHILD CARE FACILITY
- ABOVE GROUND UTILITY
- PUBLIC ROAD
- RAILROAD
- DITCH/CANAL/DRAINAGE
- DISPROPORTIONATELY IMPACTED COMMUNITY
- PARCEL BOUNDARY
- GREELEY JURISDICTIONAL BOUNDARY
- RULE 411.b 2640' BUFFER
- RIPARIAN CORRIDOR
- DELINEATED WETLANDS
- RIVERINE CORRIDOR
- FRESHWATER EMERGENT WETLAND
- FRESHWATER FORESTED/SHRUB WETLAND
- LAKE
- FRESHWATER POND
- 100-YEAR FLOODPLAIN (EFFECTIVE, 2016)
- 100-YEAR FLOODWAY (PRELIMINARY, 2020)
- 100-YEAR FLOODPLAIN (PRELIMINARY, 2020)

**Kerr-McGee Oil &  
Gas Onshore LP**  
1099 18th Street  
Denver, Colorado 80202

**LOVELAND OFFICE**  
6706 North Franklin Avenue  
Loveland, Colorado 80538  
Phone 970-776-4331

**SHERIDAN OFFICE**  
1095 Saberton Avenue  
Sheridan, Wyoming 82801  
Phone 307-674-0609

Drawn by: RJ      Date: 7 Dec 2022  
Revised: RJ      Date: 16 Dec 2022

N

NAD83 CO-Nft  
Scale: 1" = 600ft

K:\ANADARKO\2021\2021\_104\_VISTA\_T5N\_R67W\_SEC\_16\GIS\FORM 2A\VISTA\_13\_16HZ\_CULTURAL\_FEATURES\_MAP - WPS.mxd 12/16/2022 12:32:41 PM