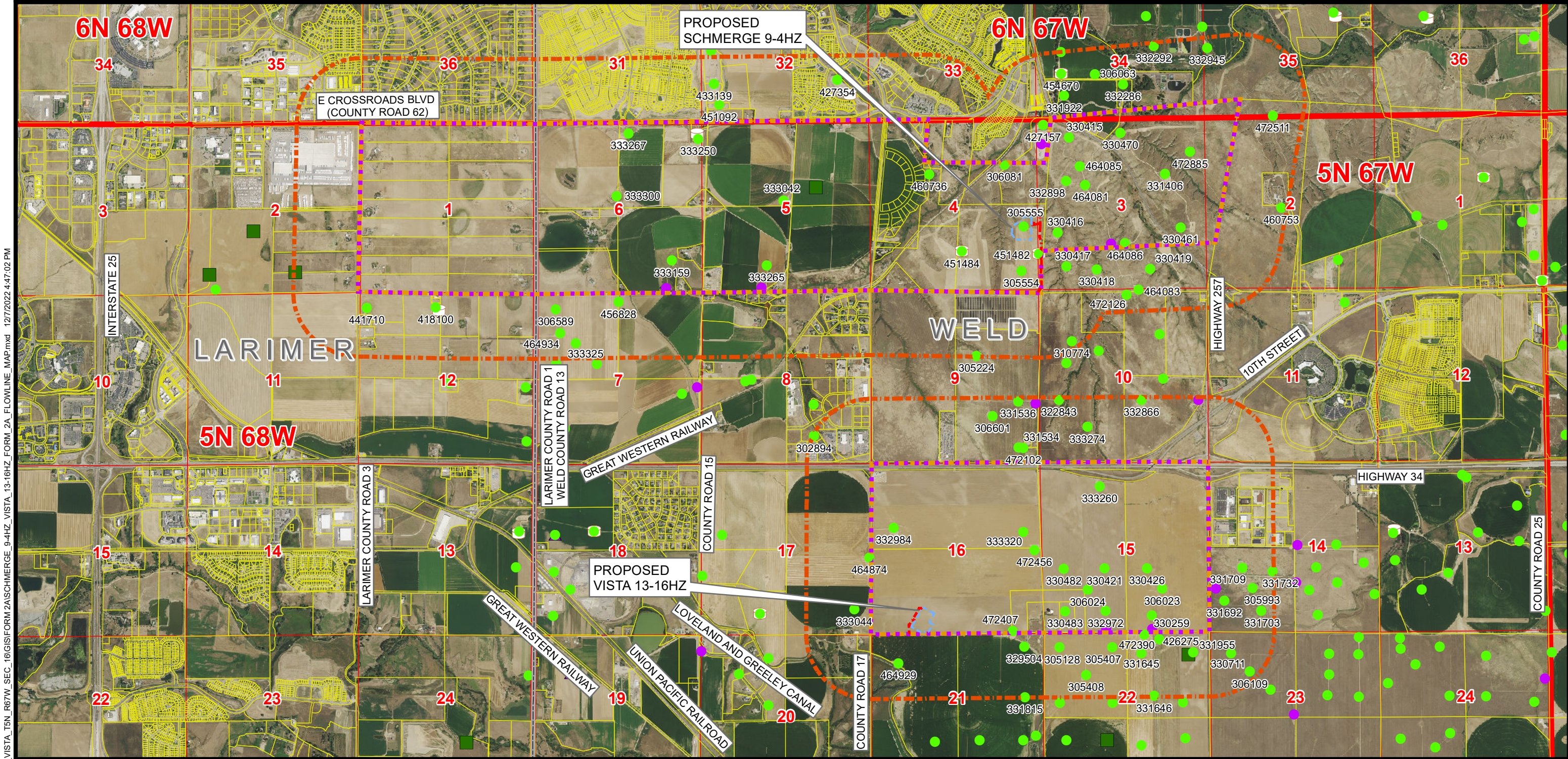


RELATED LOCATION AND FLOWLINE MAP
SCHMERGE 9-4HZ & VISTA 13-16HZ
SECTIONS 4 & 16, TOWNSHIP 5 NORTH, RANGE 67 WEST, 6TH P.M.

K:\ANADARKO\2021\2021_104_VISTA_T5N_R67W_SEC_16\GIS\FORM 2A\SCHMERGE_9-4HZ_VISTA_13-16HZ_FORM_2A_FLOWLINE_MAP.mxd 12/7/2022 4:47:02 PM



Legend

PROPOSED WORKING PAD SURFACE	2000' BUFFER - PROPOSED OGDG BOUNDARY	APPROVED LOCATION PERMIT (FORM 2A)	CLOSED PIT
PROPOSED ACCESS ROAD	ACTIVE LOCATION	APPROVED WELL PERMIT (FORM 2)	TANK BATTERY
PROPOSED MINERAL BOUNDARY	VISIBLE LOCATION ON AERIAL NOT IN COGCC GIS	PENDING WELL PERMIT (FORM 2)	PARCEL BOUNDARY
PROPOSED OGDG BOUNDARY	PENDING LOCATION PERMIT (FORM 2A)	WELD OIL AND GAS LOCATION ASSESSMENT (WOGLA)	

Kerr-McGee Oil & Gas Onshore LP
1099 18th Street
Denver, Colorado 80202

609 Consulting, LLC
LOVELAND OFFICE
6706 North Franklin Avenue
Loveland, Colorado 80538
Phone 970-776-4331
SHERIDAN OFFICE
1095 Saberton Avenue
Sheridan, Wyoming 82801
Phone 307-674-0609

Drawn by: RJ
Revised:

Date: 7 Dec 2022
Date:

NAD83 CO-Nft
1" = 3,000ft
0 1,500 3,000

K:\NADARKO2021\2021_104_VISTA_T5N_R67W_SEC_16\GIS\FORM 2\ASCHMERGE_9-4HZ_VISTA_13-16HZ_FORM_2A_FLOWLINE_TABLE.mxd 12/7/2022 2:52:18 PM


RELATED LOCATION & FLOWLINE MAP
SCHMERGE 9-4HZ & VISTA 13-16HZ
SECTIONS 4 & 16, TOWNSHIP 5 NORTH, RANGE 67 WEST, 6TH P.M.

LOCATION ID	LOCATION NAME	LOCATION NUMBER	OPERATOR NAME
302894	SOUTH GATE-65N67W	8SWSE	KERR MCGEE OIL & GAS ONSHORE LP
305128	KATIE HAGER-65N67W	22NWNW	BLUE CHIP OIL INC
305224	WARNER-65N67W	9SWNE	PDC ENERGY INC
305407	MARY HAGER-65N67W	22NENW	BLUE CHIP OIL INC
305408	JEAN ANN-65N67W	22CNW	BLUE CHIP OIL INC
305554	SCHMERGE-65N67W	4SESE	PDC ENERGY INC
305555	SCHMERGE-65N67W	4NESE	PDC ENERGY INC
305993	GOLDBERG N-65N67W	14NESW	NOBLE ENERGY INC
306023	EDWARDS-65N67W	15NWSE	KERR MCGEE OIL & GAS ONSHORE LP
306024	EDWARDS-65N67W	15NESW	KERR MCGEE OIL & GAS ONSHORE LP
306063	KODAK-66N67W	34SESW	KERR MCGEE OIL & GAS ONSHORE LP
306081	EPICENTER-65N67W	4SWNE	KERR MCGEE OIL & GAS ONSHORE LP
306109	KINZER-65N67W	23NWNW	NOBLE ENERGY INC
306589	HEINRICY-65N67W	7NWNW	PDC ENERGY INC
306601	WARNER-USX N-65N67W	9NWSE	PDC ENERGY INC
310774	HIGHPOINTE-65N67W	10SWNW	PDC ENERGY INC
322843	STEPHENS-FOE-65N67W	10NWSW	PDC ENERGY INC
329504	WIEDEMAN, *G-65N67W	21NENE	KERR MCGEE OIL & GAS ONSHORE LP
330259	HSR-NIES-65N67W	15SWSE	KERR MCGEE OIL & GAS ONSHORE LP
330415	HSR-KNOX-65N67W	3NWNW	KERR MCGEE OIL & GAS ONSHORE LP
330416	HSR-KNOX-65N67W	3NWSW	KERR MCGEE OIL & GAS ONSHORE LP
330417	HSR-KNOX-65N67W	3WSW	KERR MCGEE OIL & GAS ONSHORE LP
330418	HSR-KNOX-65N67W	3SESW	KERR MCGEE OIL & GAS ONSHORE LP
330419	HSR-KNOX-65N67W	3SWSE	KERR MCGEE OIL & GAS ONSHORE LP
330421	HSR-LEONARD-65N67W	15NESW	KERR MCGEE OIL & GAS ONSHORE LP
330426	HSR-NIES-65N67W	15NWSE	KERR MCGEE OIL & GAS ONSHORE LP
330461	SHURVIEW	13N-3HZ	KERR MCGEE OIL & GAS ONSHORE LP
330470	HSR-ANDERSON-65N67W	3NENW	KERR MCGEE OIL & GAS ONSHORE LP
330482	HSR-LEONARD-65N67W	15NWSW	KERR MCGEE OIL & GAS ONSHORE LP
330483	HSR-LEONARD-65N67W	15SWSW	KERR MCGEE OIL & GAS ONSHORE LP
330711	HSR-KINZER-65N67W	23NWNW	NOBLE ENERGY INC
331406	KNOX-65N67W	3SWNE	PDC ENERGY INC
331534	EDWARDS-65N67W	9SESE	PDC ENERGY INC
331536	EDWARDS-65N67W	9NESE	PDC ENERGY INC
331645	HANKINS-65N67W	22NWNE	PDC ENERGY INC
331646	HANKINS-65N67W	22SWNE	PDC ENERGY INC
331692	GOLDBERG N-65N67W	14SWSW	NOBLE ENERGY INC
331703	GOLDBERG N-65N67W	14SESW	NOBLE ENERGY INC
331709	GOLDBERG N-65N67W	14NWSW	NOBLE ENERGY INC
331732	GOLDBERG N-65N67W	14NESW	NOBLE ENERGY INC
331815	G. WIEDEMAN-65N67W	21SENE	KERR MCGEE OIL & GAS ONSHORE LP
331922	KODAK-66N67W	34SWSW	KERR MCGEE OIL & GAS ONSHORE LP
331955	HANKINS-65N67W	22NENE	PDC ENERGY INC
332286	KODAK-66N67W	34SESW	KERR MCGEE OIL & GAS ONSHORE LP

LOCATION ID	LOCATION NAME	LOCATION NUMBER	OPERATOR NAME
332292	KODAK-66N67W	34NWSE	KERR MCGEE OIL & GAS ONSHORE LP
332866	STEPHENS FOE-65N67W	10NWSE	PDC ENERGY INC
332898	HSR-KNOX-65N67W	3SWNW	KERR MCGEE OIL & GAS ONSHORE LP
332945	KODAK-66N67W	34NESE	GREAT WESTERN OPERATING COMPANY LLC
332972	HSR-LEONARD-65N67W	15SESW	KERR MCGEE OIL & GAS ONSHORE LP
332984	LEONARD & SON-65N67W	16SWNW	PDC ENERGY INC
333042	FRANK-65N67W	5SENW	KERR MCGEE OIL & GAS ONSHORE LP
333044	HANKINS-65N67W	17SESE	PDC ENERGY INC
333159	LIND-65N67W	6SESE	KERR MCGEE OIL & GAS ONSHORE LP
333250	LIND-65N67W	6NENE	KERR MCGEE OIL & GAS ONSHORE LP
333260	EDWARDS-65N67W	15NENW	PDC ENERGY INC
333265	TROLLCO-65N67W	5SESW	KERR MCGEE OIL & GAS ONSHORE LP
333267	LIND-65N67W	6NWNE	KERR MCGEE OIL & GAS ONSHORE LP
333274	HIGHPOINTE-65N67W	10SESW	PDC ENERGY INC
333300	LIND-65N67W	6SENW	KERR MCGEE OIL & GAS ONSHORE LP
333320	VILLAGE-65N67W	16SENE	PDC ENERGY INC
333325	HEINRICY	NW-7	PDC ENERGY INC
418100	ENCORE TANK BATTERY	41N-12HZ	KERR MCGEE OIL & GAS ONSHORE LP
426275	HANKINS	31-22H PAD	PDC ENERGY INC
427157	RANCHO WATER VALLEY PAD	41-4	EXTRACTION OIL & GAS INC
427354	FRYE FARMS	32-M PAD	EXTRACTION OIL & GAS INC
433139	MILKSHAKE PAD		EXTRACTION OIL & GAS INC
441710	ENCORE	41N-12HZ	KERR MCGEE OIL & GAS ONSHORE LP
451092	RAINDANCE TRUCK LOADOUT PAD	20-202HNX	GREAT WESTERN OPERATING COMPANY LLC
451482	SMERGE 43&44-4 TB LOCATION		PDC ENERGY INC
451484	SMERGE 33 & 34-4 TB LOCATION		PDC ENERGY INC
454670	KODAK SW 1/4 34 6N 67W TB LOCATION		KERR MCGEE OIL & GAS ONSHORE LP
456828	ZEILER-65N67W	7NWNE	KERR MCGEE OIL & GAS ONSHORE LP
460736	PAVISTMA-65N67W-BATT	4SENW	KERR MCGEE OIL & GAS ONSHORE LP
460753	E.JOHNSON FED/RUDOLPH		PDC ENERGY INC
464081	HSR-KNOX-65N67W-TANK	3SENW	KERR MCGEE OIL & GAS ONSHORE LP
464083	SHUR VIEW-65N67W-TANK	10NWNE	KERR MCGEE OIL & GAS ONSHORE LP
464085	SHUR VIEW-65N67W-TANK	3SWNW	KERR MCGEE OIL & GAS ONSHORE LP
464086	HSR-KNOX-65N67W-TANK	3NWSE	KERR MCGEE OIL & GAS ONSHORE LP
464874	HANKINS-65N67W	17NWSE	PDC ENERGY INC
464929	WIEDEMAN-65N67W	21SWNW	PDC ENERGY INC
464934	HEINRICY	NW-7	PDC ENERGY INC
472102	EDWARDS-65N67W	9SESE	PDC ENERGY INC
472126	B&B	10-31	PDC ENERGY INC
472390	HANKINS 31-22H; 22-11, 12, 13,	14; LT 22-15	PDC ENERGY INC
472407	EDWARDS 34-16U, 16DU	HARDMAN 5	PDC ENERGY INC
472456	VILLAGE	31, 32, 41, 42-	PDC ENERGY INC
472511	E JOHNSON	2-21	PDC ENERGY INC
472885	KNOX	41-3	PDC ENERGY INC

NOTE: THIS MAP IS A COMPILATION OF PUBLICLY AVAILABLE DATA. THE ACCURACY AND COMPLETENESS OF SAID DATA HAS NOT BEEN VERIFIED BY 609 CONSULTING, LLC. EXISTING CONDITIONS MAY DIFFER FROM WHAT IS SHOWN.

**Kerr-McGee Oil &
Gas Onshore LP**
1099 18th Street
Denver, Colorado 80202



LOVELAND OFFICE
6706 North Franklin Avenue
Loveland, Colorado 80538
Phone 970-776-4331

SHERIDAN OFFICE
1095 Saberton Avenue
Sheridan, Wyoming 82801
Phone 307-674-0609

609 Consulting, LLC

Drawn by: RJ
Revised:

Date: 7 Dec 2022
Date: