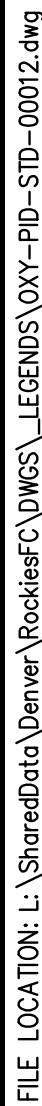
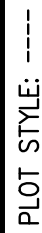


THIS DRAWING AND THE DESIGN IT COVERS ARE CONFIDENTIAL AND REMAIN THE PROPERTY OF ANADARKO PETROLEUM CORPORATION AND SHALL NOT BE DISCLOSED TO OTHERS OR REPRODUCED IN ANY MANNER OR USED FOR ANY PURPOSE WITHOUT THE WRITTEN PERMISSION BY THE OWNER.

TANKS	VESSELS			EXCHANGERS		PUMPS												
FLAT ROOF	VERTICAL VESSEL	VERTICAL VESSEL WITH SKIRT	EXCHANGER - DOUBLE END		PUMP - VERTICAL (Y AXIS)													
			EXCHANGER - SINGLE END		PUMP - HORIZONTAL (Y AXIS)													
					PUMP - CENTRIFUGAL (Y AXIS)													
SLOPING ROOF	VERTICAL VESSEL WITH CONE	VERTICAL VESSEL WITH SKIRT & CONE	EXCHANGER - DOUBLE END KETTLE		PUMP - DUAL													
			EXCHANGER - SINGLE END KETTLE		PUMP - SUMP (Y AXIS)													
					PUMP - ROTARY													
FLOATING ROOF	VERTICAL FLAT BOTTOM VESSEL	HORIZONTAL VESSEL	EXCHANGER - SUPER		PUMP - WITH STEAM TURBINE													
			EXCHANGER - PROCESS FLOW		PUMP - AIR OPERATED PUMP													
			LEAN/RICH AMINE EXCHANGER		PUMP - DIAPHRAM													
	HORIZONTAL VESSEL WITH ECCENTRIC	CENTRIFUGAL COMPRESSOR	FUEL GAS HEATER		PULSATION DAMPENER													
			AFTER COOLER WITH MOTOR		MOTOR													
					EQUIPMENT TAG													
					TAG DESC --- TAG													
NOTES:	REFERENCE DRAWINGS	REVISIONS	OXY Rockies		PIPING & INSTRUMENTATION DIAGRAM EQUIPMENT LEGEND													
DWG. NO.	TITLE	NO.	DESCRIPTION	BY	DATE	CHK.	DATE	APPR.	DATE	OXY STANDARD		DRAWN BY: MJ	CREATION DATE: --	AFE No.:	DWG. No.:	SHEET No.	2 OF 4	3
												APPROVED: --	APPR. DATE: --		OXY-PID-STD-00011			
												SCALE: NONE						

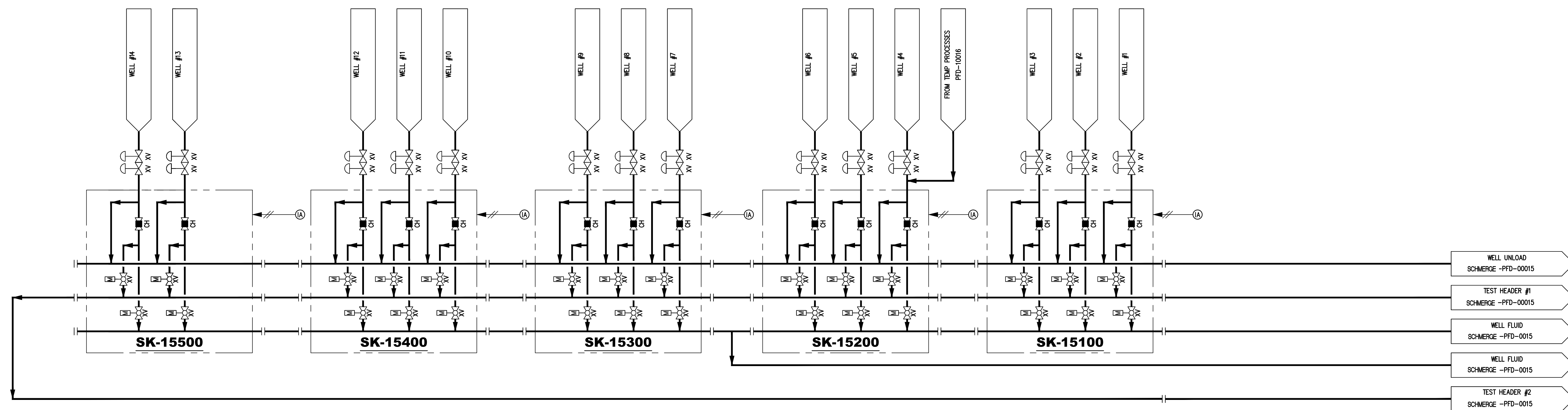


OXY Rockies

OXY STANDARD

FILE LOCATION: L:\SharedData\Denver\RockiesFC\DWGS\LEGENDS\OXY-PID-STD-00013.dwg
LAST SAVED: 1/8/2020 BY: Max Palchikto

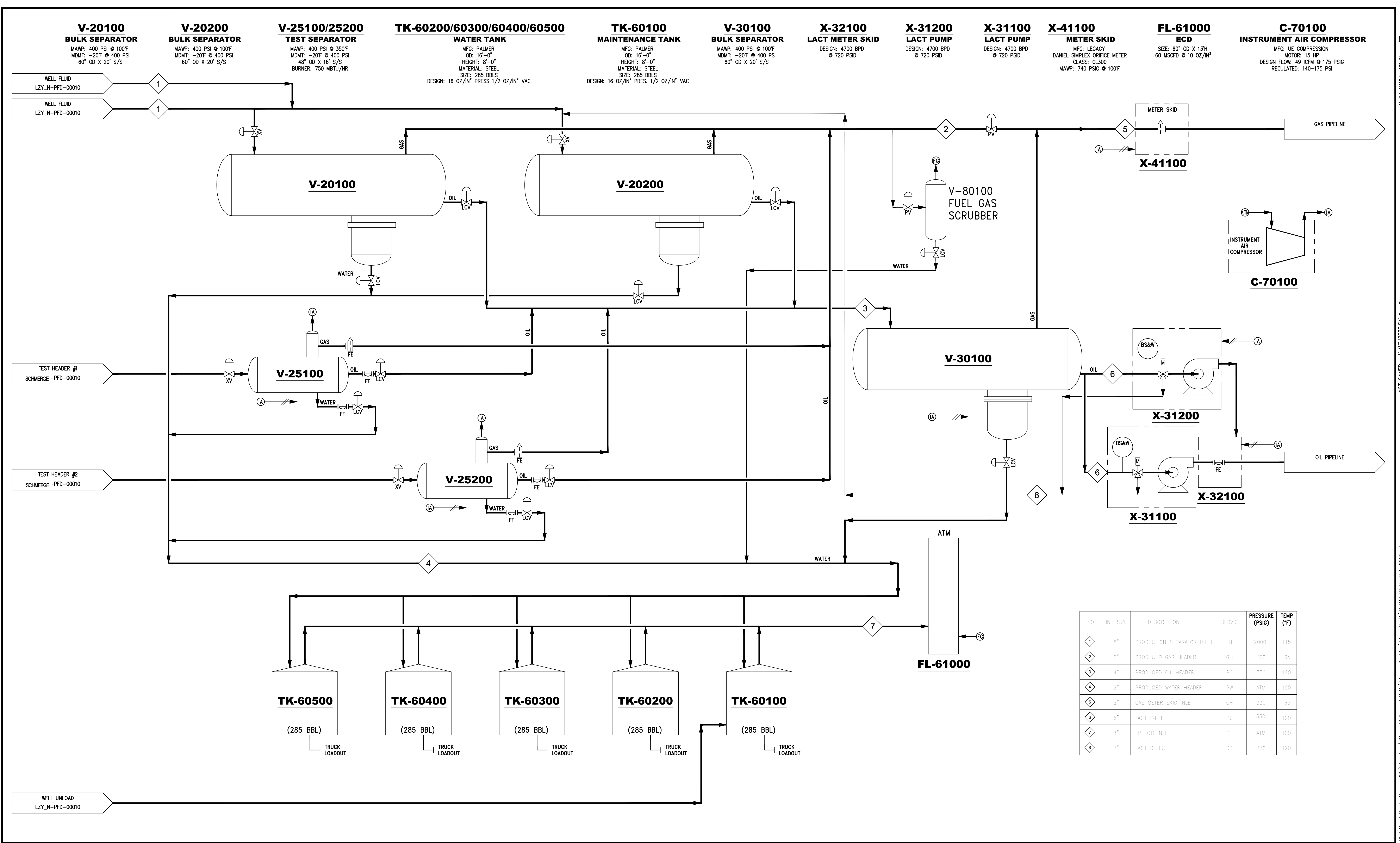
SK-15100-15400
WELLHEAD MANIFOLD
(3 PACK)



FILE LOCATION: P:\14046 - Well Head Production Facility\Drawings\01 - P&IDs and PFDs\Lizzy-Working\Lizzy North\PFD\LZY_N-PFD-00010.dwg

[illegible]

THIS DRAWING AND THE DESIGN IT COVERS ARE CONFIDENTIAL AND REMAIN THE PROPERTY OF ANADARKO PETROLEUM CORPORATION AND SHALL NOT BE DISCLOSED TO OTHERS OR REPRODUCED IN ANY MANNER OR USED FOR ANY PURPOSE WHATSOEVER EXCEPT BY WRITTEN PERMISSION BY THE OWNER.



NO.	LINE SIZE	DESCRIPTION	SERVICE	PRESSURE (PSIG)	TEMP (°F)
1	8"	PRODUCTION SEPARATOR INLET	LH	2000	115
2	6"	PRODUCED GAS HEADER	GH	360	65
3	4"	PRODUCED OIL HEADER	PC	350	120
4	2"	PRODUCED WATER HEADER	PW	ATM	120
5	2"	GAS METER SKID INLET	GH	330	65
6	6"	LACT INLET	PC	330	120
7	3"	LP ECD INLET	PF	ATM	100
8	3"	LACT REJECT	DP	330	120

NOTES:

REFERENCE DRAWINGS		REVISIONS					
DWG. NO.	TITLE	NO.	DESCRIPTION	BY	DATE	CHK.	

Kerr-McGee Oil & Gas Onshore LP

SCHMERGE

PROCESS FLOW DIAGRAM

PRODUCTION FACILITY

DRAWN BY: TCT	CREATION DATE: 11/17/22	AFE No.: -
APPROVED: MB	APPR. DATE: 11/17/22	
DWG. No.: SCHMERGE -PFD-00015		SHEET No.: - OF -
SCALE: -		

