

WELL PAD LOCATION PICTURES
SCHMERGE 9-4HZ

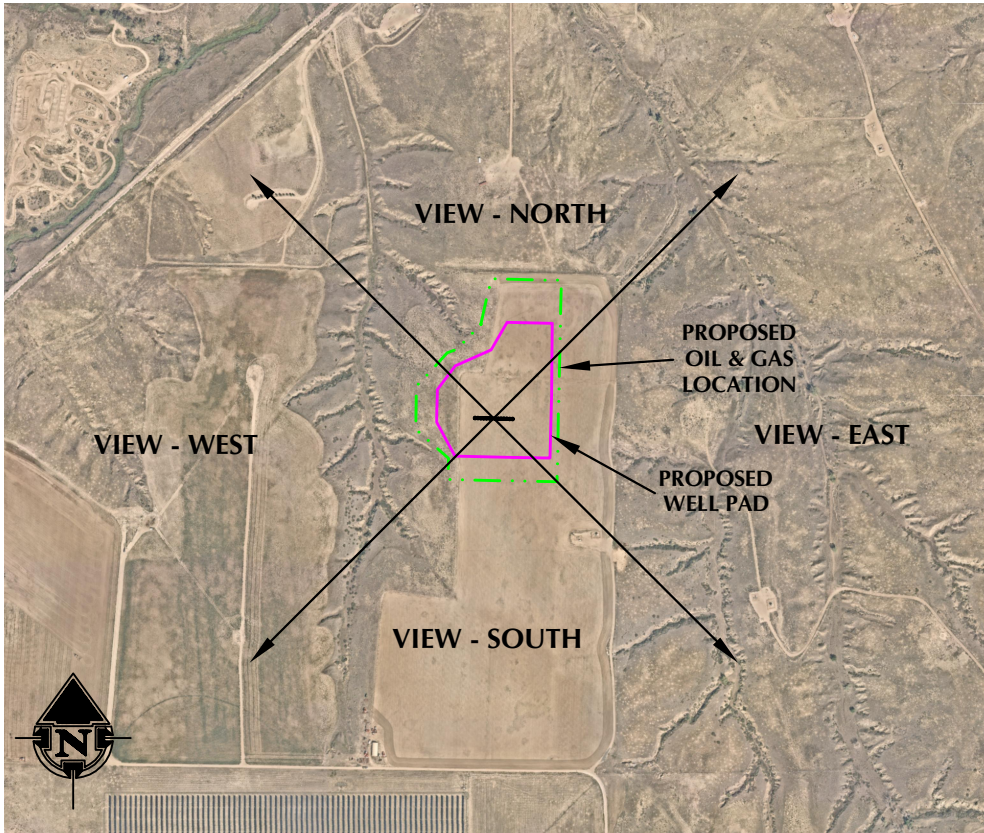
NE1/4 SE1/4 SECTION 4, TOWNSHIP 5 NORTH, RANGE 67 WEST, 6TH P.M., WELD COUNTY, COLORADO



LOCATION PICTURE OF SCHMERGE 9-4HZ WELL PAD - CAMERA VIEW NORTH



LOCATION PICTURE OF SCHMERGE 9-4HZ WELL PAD - CAMERA VIEW SOUTH



VIEW - OVERHEAD
AERIAL IMAGERY COURTESY OF NEARMAP
2022-09-04



LOCATION PICTURE OF SCHMERGE 9-4HZ WELL PAD - CAMERA VIEW EAST



LOCATION PICTURE OF SCHMERGE 9-4HZ WELL PAD - CAMERA VIEW WEST

K:\ANADARKO\2022\2022_97_SCHMERGE_TSN_R67W_SEC_4\DWG\SCHMERGE_TSN_R67W_SEC_4_OPTION_2.dwg, 11/11/2022 3:09:01 PM, steven



LOVELAND OFFICE
6706 North Franklin Avenue
Loveland, Colorado 80538
Phone 970-776-4331

SHERIDAN OFFICE
1095 Saberton Avenue
Sheridan, Wyoming 82801
Phone 307-674-0609

**Kerr-McGee Oil &
Gas Onshore LP**
1099 18th Street
Denver, Colorado 80202

DATE SURVEYED: 11/3/22
DATE: 11/18/22
DRAFTER: HJL
REVISED:

DATA SOURCES:
-AERIAL IMAGERY COURTESY OF NEARMAP.