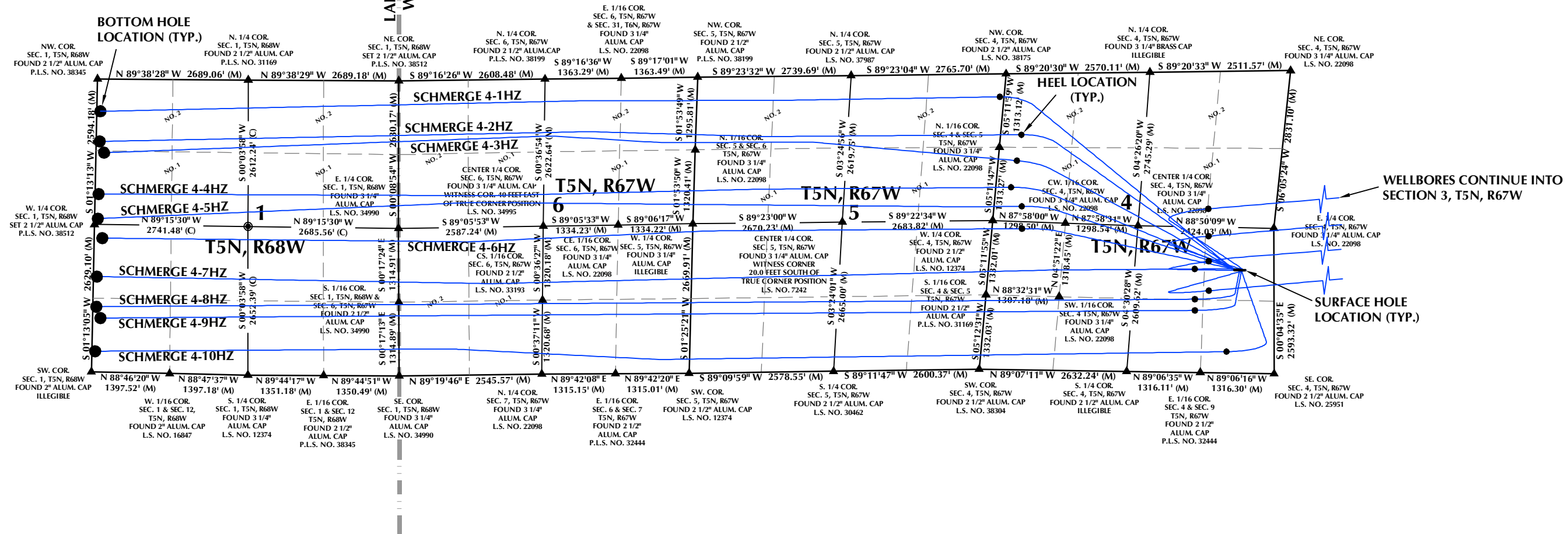
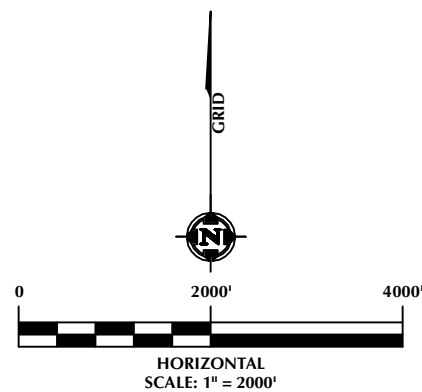


DIRECTIONAL WELL PLAT (COGCC) / MULTI-WELL PLAN (OGED)
SECTIONS 3, 4, 5, 6, T5N, R67W & SECTION 1, T5N, R68W



NOTES:

- ▲ INDICATES SECTION CORNER.
- INDICATES CALCULATED CORNER.
- BASIS OF BEARINGS DERIVED FROM COLORADO COORDINATE SYSTEM OF 1983, NORTH ZONE.
- ALL MEASURED DISTANCES ARE GRID.
- COMBINED SCALE FACTOR: .99973137 CALCULATED FROM THE E. 1/4 CORNER OF SECTION 4, T5N, R67W.
- WELL FOOTAGES ARE MEASURED AT RIGHT ANGLES TO THE SECTION LINES.



LOVELAND OFFICE
6706 North Franklin Avenue
Loveland, Colorado 80538
Phone 970-776-4331

SHERIDAN OFFICE
1095 Saberton Avenue
Sheridan, Wyoming 82801
Phone 307-674-0609

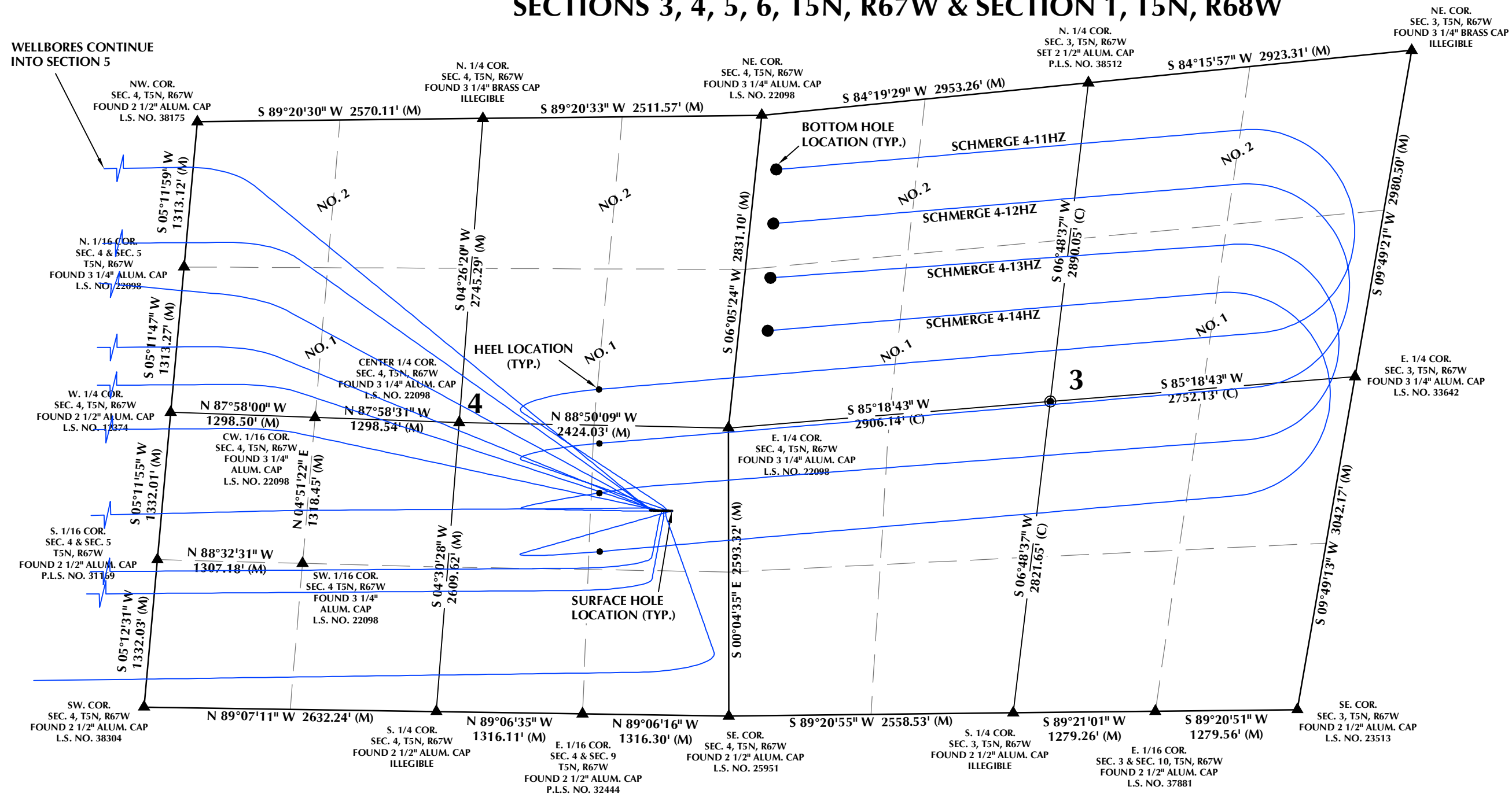
**Kerr-McGee Oil &
Gas Onshore LP**
1099 18th Street
Denver, Colorado 80202

WELL PAD - SCHMERGE 9-4HZ

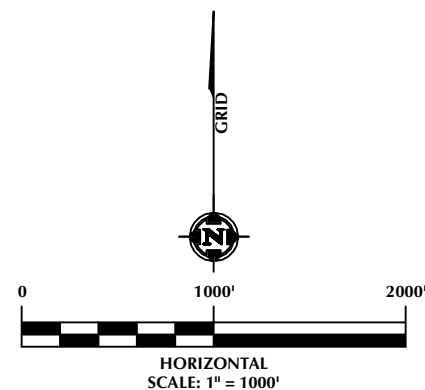
DIRECTIONAL WELL PLAT (COGCC) / MULTI-WELL PLAN (OGED)
SCHMERGE 4-1HZ, SCHMERGE 4-2HZ,
SCHMERGE 4-3HZ, SCHMERGE 4-4HZ,
SCHMERGE 4-5HZ, SCHMERGE 4-6HZ,
SCHMERGE 4-7HZ, SCHMERGE 4-8HZ,
SCHMERGE 4-9HZ, SCHMERGE 4-10HZ,
SCHMERGE 4-11HZ, SCHMERGE 4-12HZ,
SCHMERGE 4-13HZ & SCHMERGE 4-14HZ
LOCATED IN SECTIONS 3, 4, 5 & 6, T5N, R67W, 6TH P.M.
WELD COUNTY, COLORADO &
SECTION 1, T5N, R68W, 6TH P.M.
LARIMER COUNTY, COLORADO

DRAFTED BY:	SJM	CHECKED BY:	RKF	SHEET NO:
DATE DRAFTED:	12/14/22	DATE SURVEYED:	11/3/22	1A
REVISED:		FILE NAME:	22-97	1A OF 1

DIRECTIONAL WELL PLAT (COGCC) / MULTI-WELL PLAN (OGED)
SECTIONS 3, 4, 5, 6, T5N, R67W & SECTION 1, T5N, R68W



- NOTES:**
1. ▲ INDICATES SECTION CORNER.
 2. ● INDICATES CALCULATED CORNER.
 3. BASIS OF BEARINGS DERIVED FROM COLORADO COORDINATE SYSTEM OF 1983, NORTH ZONE.
 4. ALL MEASURED DISTANCES ARE GRID.
COMBINED SCALE FACTOR: .99973137 CALCULATED FROM THE E. 1/4 CORNER OF SECTION 4, T5N, R67W.
 5. WELL FOOTAGES ARE MEASURED AT RIGHT ANGLES TO THE SECTION LINES.



LOVELAND OFFICE
6706 North Franklin Avenue
Loveland, Colorado 80538
Phone 970-776-4331

SHERIDAN OFFICE
1095 Saberton Avenue
Sheridan, Wyoming 82801
Phone 307-674-0609

**Kerr-McGee Oil &
Gas Onshore LP**
1099 18th Street
Denver, Colorado 80202

WELL PAD - SCHMERGE 9-4HZ

DIRECTIONAL WELL PLAT (COGCC) / MULTI-WELL PLAN (OGED)
SCHMERGE 4-1HZ, SCHMERGE 4-2HZ,
SCHMERGE 4-3HZ, SCHMERGE 4-4HZ,
SCHMERGE 4-5HZ, SCHMERGE 4-6HZ,
SCHMERGE 4-7HZ, SCHMERGE 4-8HZ,
SCHMERGE 4-9HZ, SCHMERGE 4-10HZ,
SCHMERGE 4-11HZ, SCHMERGE 4-12HZ,
SCHMERGE 4-13HZ & SCHMERGE 4-14HZ
LOCATED IN SECTIONS 3, 4, 5 & 6, T5N, R67W, 6TH P.M.
WELD COUNTY, COLORADO &
SECTION 1, T5N, R68W, 6TH P.M.
LARIMER COUNTY, COLORADO

DRAFTED BY:	SJM	CHECKED BY:	RKF	SHEET NO: <div style="font-size: 2em; font-weight: bold;">1B</div> 1B OF 1
DATE DRAFTED:	12/14/22	DATE SURVEYED:	11/3/22	
REVISED:		FILE NAME:	22-97	

DIRECTIONAL WELL PLAT (COGCC) / MULTI-WELL PLAN (OGED)
SECTIONS 3, 4, 5, 6, T5N, R67W & SECTION 1, T5N, R68W

WELL NOTES:

SCHMERGE 4-1HZ
SURFACE HOLE LOCATION: 1839' FSL, 704' FEL (SEC. 4, T5N, R67W)
HEEL LOCATION: 408' FNL, 72' FEL (SEC. 5, T5N, R67W)
BOTTOM HOLE LOCATION: 575' FNL, 60' FWL (SEC. 1, T5N, R68W)

SCHMERGE 4-2HZ
SURFACE HOLE LOCATION: 1839' FSL, 689' FEL (SEC. 4, T5N, R67W)
HEEL LOCATION: 1088' FNL, 373' FWL (SEC. 4, T5N, R67W)
BOTTOM HOLE LOCATION: 1113' FNL, 60' FWL (SEC. 1, T5N, R68W)

SCHMERGE 4-3HZ
SURFACE HOLE LOCATION: 1839' FSL, 674' FEL (SEC. 4, T5N, R67W)
HEEL LOCATION: 1552' FNL, 336' FWL (SEC. 4, T5N, R67W)
BOTTOM HOLE LOCATION: 1314' FNL, 140' FWL (SEC. 1, T5N, R68W)

SCHMERGE 4-4HZ
SURFACE HOLE LOCATION: 1839' FSL, 659' FEL (SEC. 4, T5N, R67W)
HEEL LOCATION: 2026' FNL, 274' FWL (SEC. 4, T5N, R67W)
BOTTOM HOLE LOCATION: 2052' FNL, 60' FWL (SEC. 1, T5N, R68W)

SCHMERGE 4-5HZ
SURFACE HOLE LOCATION: 1839' FSL, 644' FEL (SEC. 4, T5N, R67W)
HEEL LOCATION: 2368' FNL, 496' FWL (SEC. 4, T5N, R67W)
BOTTOM HOLE LOCATION: 2490' FNL, 57' FWL (SEC. 1, T5N, R68W)

SCHMERGE 4-6HZ
SURFACE HOLE LOCATION: 1839' FSL, 629' FEL (SEC. 4, T5N, R67W)
HEEL LOCATION: 2518' FSL, 534' FWL (SEC. 4, T5N, R67W)
BOTTOM HOLE LOCATION: 2387' FSL, 141' FWL (SEC. 1, T5N, R68W)

SCHMERGE 4-7HZ
SURFACE HOLE LOCATION: 1839' FSL, 614' FEL (SEC. 4, T5N, R67W)
HEEL LOCATION: 1845' FSL, 1412' FEL (SEC. 4, T5N, R67W)
BOTTOM HOLE LOCATION: 1699' FSL, 60' FWL (SEC. 1, T5N, R68W)

SCHMERGE 4-8HZ
SURFACE HOLE LOCATION: 1839' FSL, 599' FEL (SEC. 4, T5N, R67W)
HEEL LOCATION: 1307' FSL, 1409' FEL (SEC. 4, T5N, R67W)
BOTTOM HOLE LOCATION: 1161' FSL, 60' FWL (SEC. 1, T5N, R68W)

SCHMERGE 4-9HZ
SURFACE HOLE LOCATION: 1839' FSL, 584' FEL (SEC. 4, T5N, R67W)
HEEL LOCATION: 1107' FSL, 1408' FEL (SEC. 4, T5N, R67W)
BOTTOM HOLE LOCATION: 961' FSL, 140' FWL (SEC. 1, T5N, R68W)

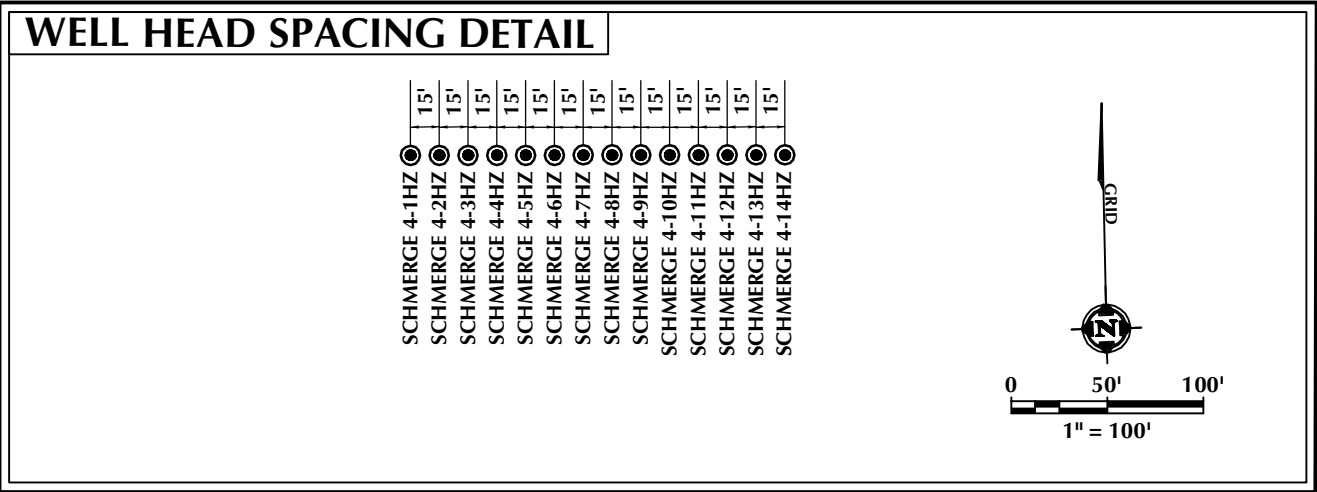
SCHMERGE 4-10HZ
SURFACE HOLE LOCATION: 1839' FSL, 569' FEL (SEC. 4, T5N, R67W)
HEEL LOCATION: 379' FSL, 846' FEL (SEC. 4, T5N, R67W)
BOTTOM HOLE LOCATION: 366' FSL, 56' FWL (SEC. 1, T5N, R68W)

SCHMERGE 4-11HZ
SURFACE HOLE LOCATION: 1838' FSL, 554' FEL (SEC. 4, T5N, R67W)
ENTRY POINT: 2450' FNL, 1197' FEL (SEC. 4, T5N, R67W)
BOTTOM HOLE LOCATION: 498' FNL, 179' FWL (SEC. 3, T5N, R67W)

SCHMERGE 4-12HZ
SURFACE HOLE LOCATION: 1838' FSL, 539' FEL (SEC. 4, T5N, R67W)
ENTRY POINT: 2436' FSL, 1164' FEL (SEC. 4, T5N, R67W)
BOTTOM HOLE LOCATION: 980' FNL, 206' FWL (SEC. 3, T5N, R67W)

SCHMERGE 4-13HZ
SURFACE HOLE LOCATION: 1838' FSL, 524' FEL (SEC. 4, T5N, R67W)
ENTRY POINT: 1989' FSL, 1163' FEL (SEC. 4, T5N, R67W)
BOTTOM HOLE LOCATION: 1463' FNL, 232' FWL (SEC. 3, T5N, R67W)

SCHMERGE 4-14HZ
SURFACE HOLE LOCATION: 1838' FSL, 509' FEL (SEC. 4, T5N, R67W)
ENTRY POINT: 1461' FSL, 1160' FEL (SEC. 4, T5N, R67W)
BOTTOM HOLE LOCATION: 1935' FNL, 257' FWL (SEC. 3, T5N, R67W)



WELL PAD - SCHMERGE 9-4HZ		
DIRECTIONAL WELL PLAT (COGCC) / MULTI-WELL PLAN (OGED) SCHMERGE 4-1HZ, SCHMERGE 4-2HZ, SCHMERGE 4-3HZ, SCHMERGE 4-4HZ, SCHMERGE 4-5HZ, SCHMERGE 4-6HZ, SCHMERGE 4-7HZ, SCHMERGE 4-8HZ, SCHMERGE 4-9HZ, SCHMERGE 4-10HZ, SCHMERGE 4-11HZ, SCHMERGE 4-12HZ, SCHMERGE 4-13HZ & SCHMERGE 4-14HZ LOCATED IN SECTIONS 3, 4, 5 & 6, T5N, R67W, 6TH P.M. WELD COUNTY, COLORADO & SECTION 1, T5N, R68W, 6TH P.M. LARIMER COUNTY, COLORADO		
DRAFTED BY:	SJM	CHECKED BY: RKF
DATE DRAFTED:	12/14/22	DATE SURVEYED: 11/3/22
REVISED:		FILE NAME: 22-97
		SHEET NO: 1C 1C OF 1

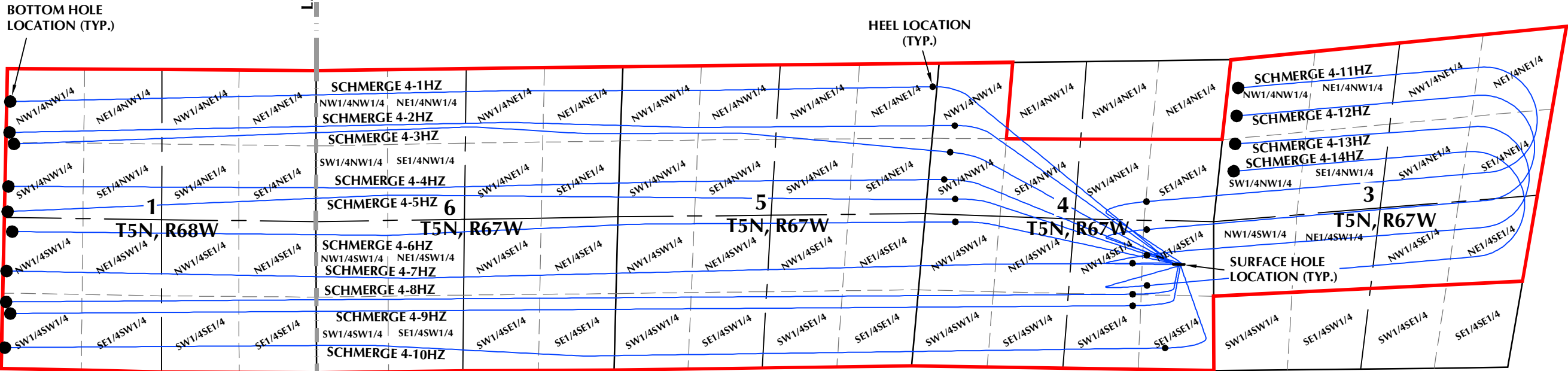


LOVELAND OFFICE
6706 North Franklin Avenue
Loveland, Colorado 80538
Phone 970-776-4331

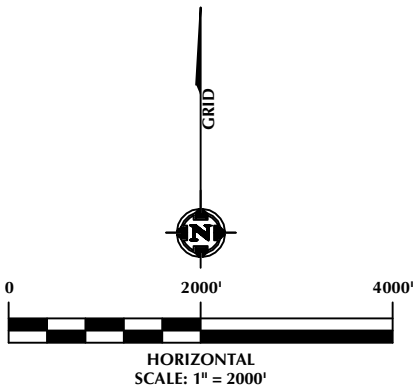
SHERIDAN OFFICE
1095 Saberton Avenue
Sheridan, Wyoming 82801
Phone 307-674-0609

Kerr-McGee Oil &
Gas Onshore LP
1099 18th Street
Denver, Colorado 80202

DIRECTIONAL WELL PLAT (COGCC) / MULTI-WELL PLAN (OGED)
SECTIONS 3, 4, 5, 6, T5N, R67W & SECTION 1, T5N, R68W



LEGEND:
— DSU BOUNDARY
— WELLBORE TRAJECTORY
● HEEL LOCATION
● BOTTOM HOLE LOCATION



LOVELAND OFFICE
6706 North Franklin Avenue
Loveland, Colorado 80538
Phone 970-776-4331

SHERIDAN OFFICE
1095 Saberton Avenue
Sheridan, Wyoming 82801
Phone 307-674-0609

**Kerr-McGee Oil &
Gas Onshore LP**
1099 18th Street
Denver, Colorado 80202

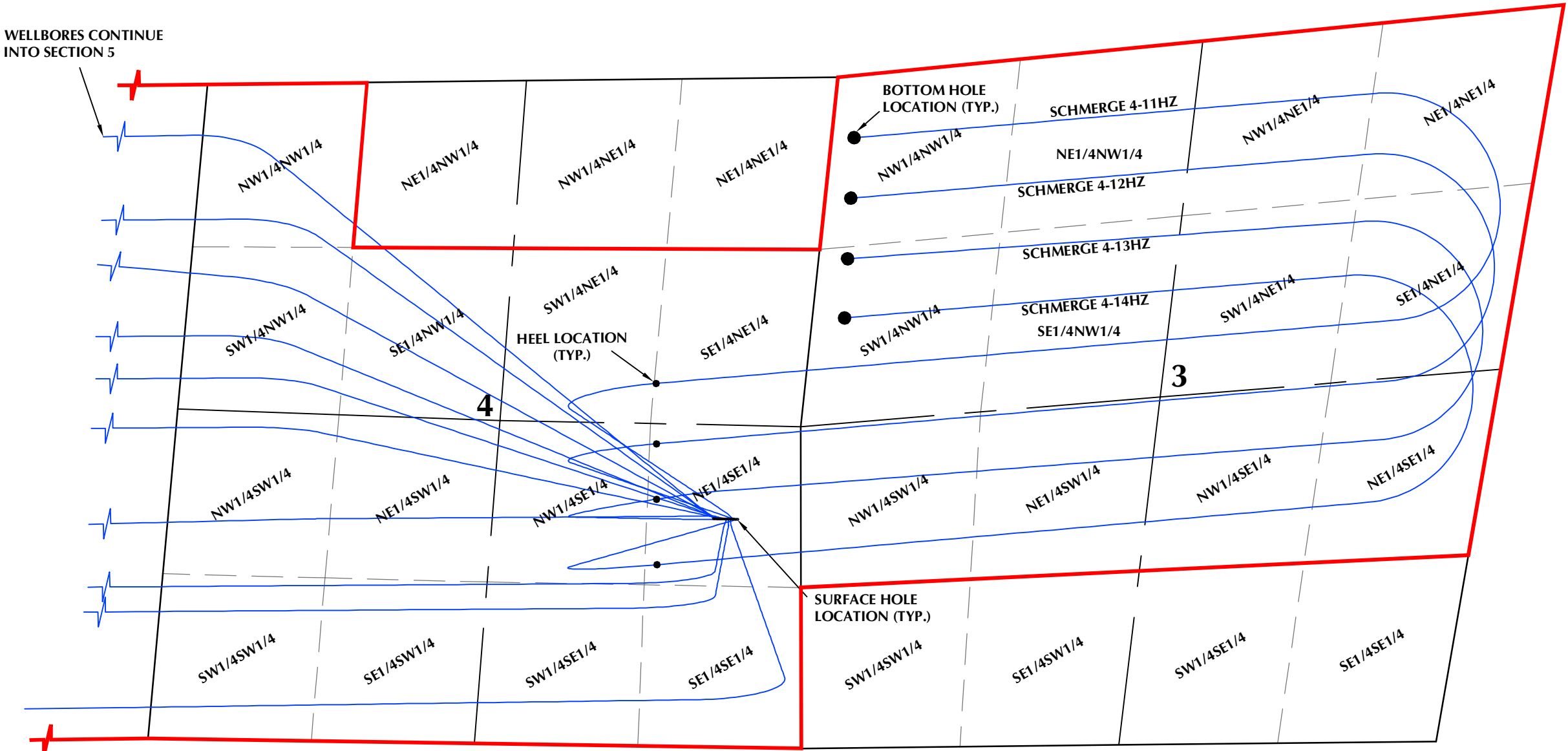
WELL PAD - SCHMERGE 9-4HZ

DIRECTIONAL WELL PLAT (COGCC) / MULTI-WELL PLAN (OGED)
SCHMERGE 4-1HZ, SCHMERGE 4-2HZ,
SCHMERGE 4-3HZ, SCHMERGE 4-4HZ,
SCHMERGE 4-5HZ, SCHMERGE 4-6HZ,
SCHMERGE 4-7HZ, SCHMERGE 4-8HZ,
SCHMERGE 4-9HZ, SCHMERGE 4-10HZ,
SCHMERGE 4-11HZ, SCHMERGE 4-12HZ,
SCHMERGE 4-13HZ & SCHMERGE 4-14HZ
LOCATED IN SECTIONS 3, 4, 5 & 6, T5N, R67W, 6TH P.M.
WELD COUNTY, COLORADO &
SECTION 1, T5N, R68W, 6TH P.M.
LARIMER COUNTY, COLORADO

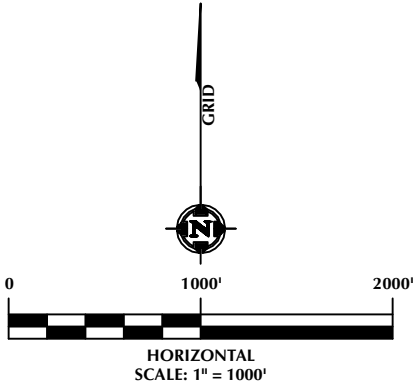
DRAFTED BY:	SJM	CHECKED BY:	RKF	SHEET NO:
DATE DRAFTED:	12/14/22	DATE SURVEYED:	11/3/22	1D
REVISED:		FILE NAME:	22-97	1D OF 1

DIRECTIONAL WELL PLAT (COGCC) / MULTI-WELL PLAN (OGED)
SECTIONS 3, 4, 5, 6, T5N, R67W & SECTION 1, T5N, R68W

WELLBORES CONTINUE
INTO SECTION 5



- LEGEND:
- DSU BOUNDARY
 - WELLBORE TRAJECTORY
 - HEEL LOCATION
 - BOTTOM HOLE LOCATION



LOVELAND OFFICE
6706 North Franklin Avenue
Loveland, Colorado 80538
Phone 970-776-4331

SHERIDAN OFFICE
1095 Saberton Avenue
Sheridan, Wyoming 82801
Phone 307-674-0609

**Kerr-McGee Oil &
Gas Onshore LP**
1099 18th Street
Denver, Colorado 80202

WELL PAD - SCHMERGE 9-4HZ

DIRECTIONAL WELL PLAT (COGCC) / MULTI-WELL PLAN (OGED)
SCHMERGE 4-1HZ, SCHMERGE 4-2HZ,
SCHMERGE 4-3HZ, SCHMERGE 4-4HZ,
SCHMERGE 4-5HZ, SCHMERGE 4-6HZ,
SCHMERGE 4-7HZ, SCHMERGE 4-8HZ,
SCHMERGE 4-9HZ, SCHMERGE 4-10HZ,
SCHMERGE 4-11HZ, SCHMERGE 4-12HZ,
SCHMERGE 4-13HZ & SCHMERGE 4-14HZ
LOCATED IN SECTIONS 3, 4, 5 & 6, T5N, R67W, 6TH P.M.
WELD COUNTY, COLORADO &
SECTION 1, T5N, R68W, 6TH P.M.
LARIMER COUNTY, COLORADO

DRAFTED BY:	SJM	CHECKED BY:	RKF
DATE DRAFTED:	12/14/22	DATE SURVEYED:	11/3/22
REVISED:		FILE NAME:	22-97

SHEET NO:
1E
1E OF 1

K:\ANDARCO\2022\2022_97_SCHMERGE_T5N_R67W_SEC_4\PLATS\SCHMERGE.dwg, 12/16/2022 9:28:35 AM, seven