



---

# **Caerus Operating LLC**

## **SURFACE CEMENT POST JOB REPORT**

**BJU B26 FED #15A-26-496 05-045-24454**  
**S:26 T:4S R:96W Garfield CO**

CallSheet #: 86266  
Proposal #: 67769



**SURFACE CEMENT Post Job Report**

**Attention:** Mr. Cole Walton | (720) 880-6325 | cwalton@caerusoilandgas.com

Caerus Operating LLC

1001 17TH STREET | DENVER, CO 80202

---

Dear Mr. Cole Walton,

Thank you for the opportunity to provide cementing services on this well. American Cementing strives to achieve complete customer satisfaction. If you have any questions regarding the services or data provided, please contact American Cementing at any time.

Sincerely,

**Krystal Schell**

Field Engineer I | (719) 992-1830 | krystal.schell@americacementing.com

**Field Office**      28730 US-6, Rifle, CO 81650  
Phone: (970) 657-1187

## Job Details & Summary

### Geometry

Type	Function	OD (in)	ID (in)	Weight (lb/ft)	Thread	Top (ft)	Bottom (ft)	Excess (%)
Casing	Outer	20	19.5	53	n/a	0	100	0
Open Hole	Outer	n/a	14.75	n/a	n/a	100	2500	25
Open Hole	Outer	n/a	14.75	n/a	n/a	2500	3035	0
Casing	Inner	9.625	8.921	36	n/a	0	2977	0

### Equipment / People

Unit Type	Unit	Power Unit	Employee #1
Field Storage Silo	FSS-478		
Field Storage Silo	FSS-468		
Cement Trailer Float	CTF-249	TRC-054	Hutchinson, Michael
Cement Pump Float	CPF-136	TRH-855	Carrasco, Joel
Light Duty Vehicles	LDV-045		McClure, Gerron
AS Cement Trailer Float	CTF-901	TRC-201	Bonin, Ryan

### Timing

Event	Date/Time
ERTS	00/04/2023 00:00
Call Out	4/4/2023 10:00
Depart Facility	4/4/2023 14:00
On Location	4/4/2023 17:00
Rig Up Iron	4/4/2023 18:00
Job Started	4/4/2023 20:33
Job Completed	4/5/2023 04:30
Rig Down Iron	4/5/2023 06:00
Depart Location	4/5/2023 06:30

### General Job Information

Metrics	Value
Well Fluid Density	9.4 lb/gal
Well Fluid Type	WBM
Rig Circulation Vol	300 bbls
Rig Circulation Time	1 hours
Calculated Displacement	228.2 bbls
Actual Displacement	228 bbls
Total Spacer to Surface	20 bbls
Total CMT to Surface	12 bbls
Well Topped Out	Yes
Top Out Volume	28 bbls

### Job Details

Metrics	Value
Flare Prior to Job	No
Flare Prior to Job	N/A units
Flare During Job	No
Flare During Job	N/A units
Flare at End of Job	No
Flare at End of Job	N/A units
Well Full Prior to Job	Yes
Well Fluid Density Into Well	9.4 lb/gal
Well Fluid Density Out of Well	9.4 lb/gal

### Job Details (cont.)

Metrics	Value
BHCT	87 °F
BHST	123 °F

### Water Analysis

Metrics	Value	Recommended
Water Source	Upright Rig Tank	
Temperature	78 °F	50-80 °F
pH Level	6	5.5-8.5
Chlorides	500 mg/L	0-3000 mg/L
Total Alkalinity	600	0-1000
Total Hardness	N/A mg/L	0-500 mg/L
Carbonates	200 mg/L	0-100 mg/L
Sulfates	200 mg/L	0-1500 mg/L
Potassium	100 mg/L	0-3000 mg/L
Iron	N/A mg/L	0-300 mg/L

## Circulation

Lost Circulation Experienced

No

## Job Execution Information

Fluid	Product	Function	Density (lb/gal)	Yield (ft <sup>3</sup> /sk)	Water Rq. (gal/sk)	Water Rq. (gal/bbl)	Volume (sks)	Volume (bbl)	Designed Top (ft)
1	Water	Flush	8.34			42.00		40.00	686
2	Lead	Lead	12.00	2.52	14.80		524.00	235.42	935
3	Tail	Tail	13.00	2.06	11.21		175.00	64.08	2500
4	Water	DisplacementFinal	8.34			42.00		228.20	0
1	Water	SUGAR WATER	8.34			42.00		15.00	0
2	TOPOUT	Topout	13.00	2.00	11.20		80.00	28.00	0

## Job Fluid Details

Fluid	Type	Fluid	Product	Function	Conc.	Uom
2	Lead	Lead	ASTM TYPE I/II	Cement	100.00	%
2	Lead	Lead	A-10	Accelerator	5.00	%BWOB
2	Lead	Lead	A-2	Accelerator	3.00	lb/sk
2	Lead	Lead	FP-24	Defoamer	0.30	%BWOB
2	Lead	Lead	IntegraSeal PHENO	LostCirculation	0.50	lb/sk
2	Lead	Lead	IntegraSeal POLI	LostCirculation	0.25	lb/sk
2	Lead	Lead	R-7C	Retarder	0.30	%BWOB
2	Lead	Lead	STATIC FREE	Other	0.01	lb/sk
3	Tail	Tail	ASTM TYPE I/II	Cement	100.00	%
3	Tail	Tail	A-10	Accelerator	5.00	%BWOB
3	Tail	Tail	A-2	Accelerator	2.00	lb/sk
3	Tail	Tail	A-5	Accelerator	5.00	%BWOW
3	Tail	Tail	FP-24	Defoamer	0.30	%BWOB
3	Tail	Tail	IntegraSeal PHENO	LostCirculation	0.50	lb/sk
3	Tail	Tail	IntegraSeal POLI	LostCirculation	0.25	lb/sk
3	Tail	Tail	STATIC FREE	Other	0.01	lb/sk
2	Primary	Primary	ASTM TYPE I/II	Cement	100.00	%
2	Primary	Primary	A-10	Accelerator	5.00	%BWOB
2	Primary	Primary	A-2	Accelerator	3.00	lb/sk
2	Primary	Primary	A-7P	Accelerator	2.00	lb/sk
2	Primary	Primary	FP-24	Defoamer	0.30	%BWOB
2	Primary	Primary	IntegraSeal POLI	LostCirculation	0.25	lb/sk
2	Primary	Primary	STATIC FREE	Other	0.01	lb/sk

## Job Logs

Line	Event	Date (MM/DD/YY)	Time (HH:MM)	Density (lb/gal)	Pump Rate (bpm)	Pump Volume (bbls)	Pipe Pressure (psi)	Comment
1	ARRIVED ON LOCATION	4/4/2023	16:30					ARRIVED ON LOCATION PER CUSTOMER REQUEST 17:00
2	HAZARD ASSESMENT	4/4/2023	16:45					
3	SPOT EQUIPMENT	4/4/2023	17:00					
4	PRE RIG UP SFTY MTG	4/4/2023	17:15					
5	RIGGED UP	4/4/2023	18:00					
6	PRE JOB SFTY MTG	4/4/2023	19:45					
7	STAB	4/4/2023	20:00					
8	START JOB	4/4/2023	20:32					START SURFACE CEMENT APPLICATION
9	PRESSURE TEST 3000	4/4/2023	20:33	8.34	5	1	3000	
10	20 BBL FW SPACER	4/4/2023	20:37	8.34	5	20	358	20 BBL FW SPACER
11	START LEAD CMT @12.00	4/4/2023	20:39	12	5	1	300	START LEAD CEMENT @ 12.00 PPG 235 BBLs
12	50 BBL LEAD	4/4/2023	20:48	12	5	50	303	
13	100 BBL LEAD	4/4/2023	20:57	12	5	100	264	
14	150 BBL LEAD	4/4/2023	21:08	12	5	150	273	
15	200 BBL LEAD	4/4/2023	21:16	12	5	200	270	
16	END OF LEAD	4/4/2023	21:25	12	5	236	220	END OF LEAD
17	START TAIL CMT @ 13	4/4/2023	21:26	13	5	1	295	START TAIL CEMENT @ 13.00 PPG 64 BBLs
18	END OF TAIL CEMENT	4/4/2023	21:35	13	3	64	90	END OF TAIL
19	Shutdown	4/4/2023	21:36					
20	Drop Top Plug	4/4/2023	21:37					DROP TOP PLUG
21	START BBL FW DISP	4/4/2023	21:39	8.34	5	1	97	START BBL FW DISPLACEMENT
22	CAUGHT CEMENT	4/4/2023	21:46	8.34	7	37	320	CAUGHT CEMENT @ 37 BBLs GONE
23	50 BBL GONE ON DISP	4/4/2023	21:48	8.34	7	50	400	SLOWED RATE THRU TOOL (4 BPM) 60-75 BBLs GONE
24	100 BBL GONE ON DISP	4/4/2023	21:57	8.34	7	100	506	
25	150 BBL GONE ON DISP	4/4/2023	22:05	8.34	7	150	688	
26	200 BBL GONE ON DISP	4/4/2023	22:12	8.34	7	200	870	
27	PRESSURE BEFORE SLOW	4/4/2023	22:14	8.34	7	218	914	PRESSURE BEFORE SLOW RATE 914 PSI
28	SLOW RATE	4/4/2023	22:14	8.34	4	218	698	SLOW RATE 698 PSI
29	PRESSURE BEFORE LAND	4/4/2023	22:21	8.34	4	228	784	PRESSURE BEFORE LAND/ FINAL LIFT PRESSURE 784 PSI
30	Land Plug	4/4/2023	22:21	8.34		228	1170	LAND PLUG @1170 PSI
31	Check Floats	4/4/2023	22:26	8.34		228		CHECK FLOAT RECEIVED 1 BBL BACK
32	WASH PARASITE LINE	4/4/2023	22:38	8.34		15		PUMPED 15 BBLs OF SUGAR WATER DOWN PARASITE LINE

Line	Event	Date (MM/DD/YY)	Time (HH:MM)	Density (lb/gal)	Pump Rate (bpm)	Pump Volume (bbls)	Pipe Pressure (psi)	Comment
33	DROP CANCELATION PLUG	4/4/2023	22:51	8.34				WAIT 10 MIN FREE FALL, COMPANY REP ADVISED CANCELLATION OF 2ND STAGE WAIT 4 HOURS FOR TOP OUT
34	CLOSED DV TOOL	4/4/2023	23:04	8.34	1	1	1480	CLOSED DV TOOL @ 1480 PSI/ 1 BBL BACK
35	BEGIN BBL CIRCULATION	12/30/1899	00:00	8.34				CIRCULATED BBLs
37	SHUTDOWN/ WOC	4/4/2023	23:21					SHUTDOWN/ WOC FOR 4 HOURS
38	START TOP OUT	4/5/2023	03:15			1		START TOP OUT
39	END TOP OUT	4/5/2023	04:28			28		TOPPED OUT WITH 28 BBLs OR 80 SKS, CIRCULATED 23 BBLs 5 BBLs TO PIT
40	END OF SERVICES	4/5/2023	04:30					END CEMENTING APPLICATION
41	POST JOB/ RIGDOWN MTG	4/5/2023	04:45					
42	RIGGED DOWN	4/5/2023	06:00					
43	PRE CONVOY SFTY MTG	4/5/2023	06:15					
44	Depart Location	4/5/2023	06:30					
45	END OF JOB	4/5/2023	06:30					END OF JOB

## Pump Diagrams



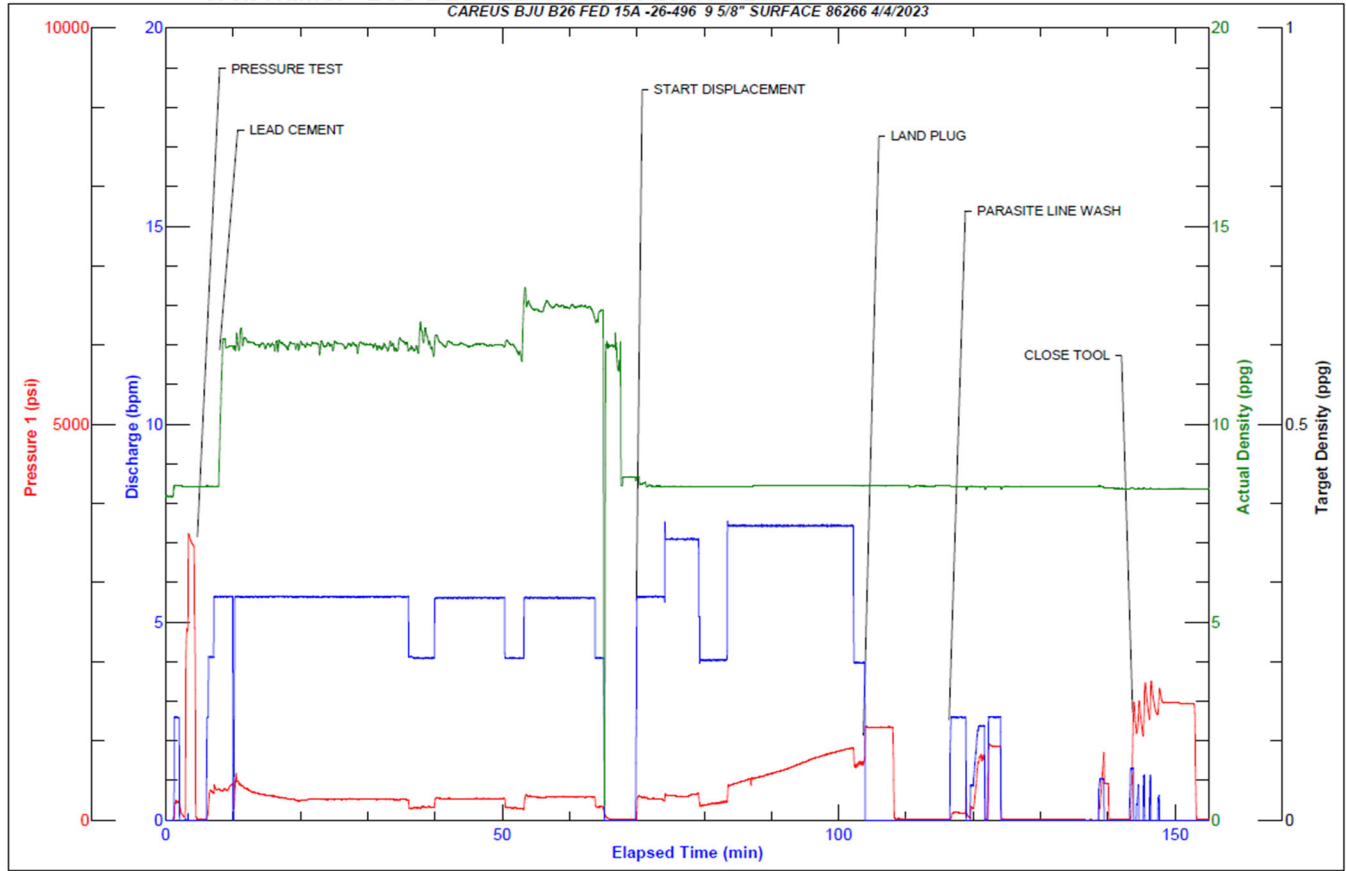
JobMaster Program Version 5.01C1

Job Number: 86266

Customer: CAERUS OPERATING

Well Name: BJU B26 FED 15A 15A-26-496-24454

CAREUS BJU B26 FED 15A -26-496 9 5/8" SURFACE 86266 4/4/2023



Job Start: Tuesday, April 04, 2023



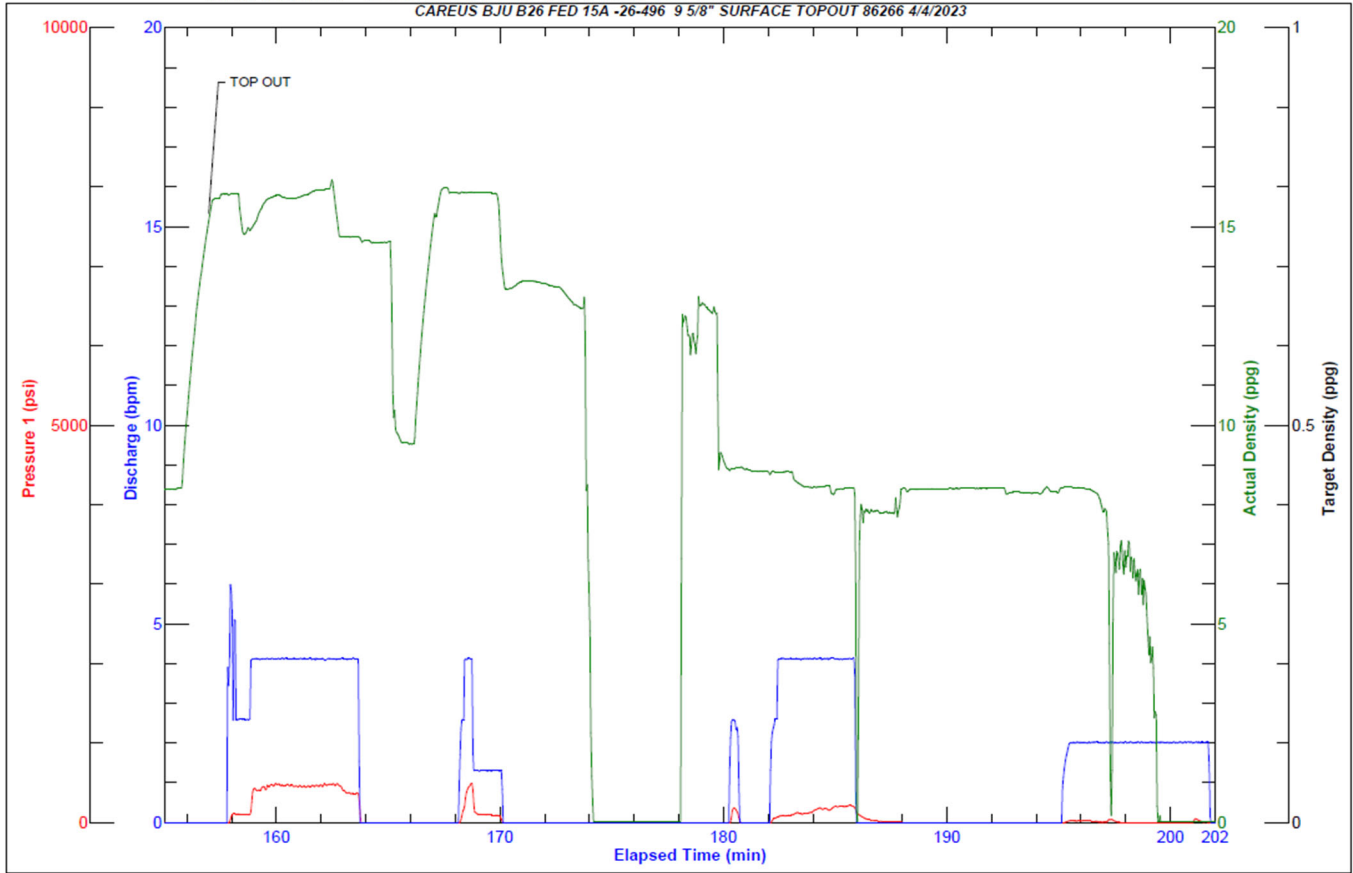
JobMaster Program Version 5.01C1

Job Number: 86266

Customer: CAERUS OPERATING

Well Name: BJU B26 FED 15A 15A-26-496-24454

CAREUS BJU B26 FED 15A -26-496 9 5/8" SURFACE TOPOUT 86266 4/4/2023



Job Start: Tuesday, April 04, 2023