

Project: Garfield County, CO  
 Site: BJU B26 496 Pad  
 Well: BJU B26 FED 25B-26 496  
 Wellbore: Wellbore #1  
 Design: Design #3  
 Latitude: 39.677078  
 Longitude: -108.137729  
 Ground Level: 8211.0  
 RKB @ 8241.0usft (30')

PROJECT DETAILS: Garfield County, CO  
 Geodetic System: Universal Transverse Mercator (US Survey Feet)  
 Datum: NAD 1927 - Western US  
 Ellipsoid: Clarke 1866  
 Zone: Zone 12N (114 W to 108 W)  
 System Datum: Mean Sea Level

REFERENCE INFORMATION  
 Vertical (TVD) Reference: RKB @ 8241.0usft (30')  
 Section (VS) Reference: Slot - 25B-26(0.0N, 0.0E)  
 Measured Depth Reference: RKB @ 8241.0usft (30')  
 Calculation Method: Minimum Curvature

#### SECTION DETAILS

MD	Inc	Azi	TVD	+N/-S	+E/-W	Dleg	TFace	VSect	Annotation
120.0	0.10	159.69	120.0	-0.1	0.2	0.00	0.00	0.2	Conductor Tie in
150.4	1.00	185.00	150.4	-0.4	0.2	3.00	28.00	0.4	Build 3' / 100'
283.7	5.00	185.00	283.5	-7.4	-0.4	3.00	0.00	6.3	EOB @ 5.00° Inc. / 185.00° Azm
953.3	24.45	158.47	928.4	-167.0	48.4	3.00	-32.55	173.5	EOB @ 24.45° Inc. / 158.47° Azm
7982.7	24.45	158.47	7327.7	-2872.9	1115.8	0.00	0.00	3080.7	Drop 3' / 100'
8797.5	0.00	0.00	8118.0	-3032.2	1178.6	3.00	180.00	3251.8	EOD @ Vertical / Build 1.5' / 100'
8895.5	1.53	235.01	8220.0	-3033.0	1177.5	1.50	235.01	3252.1	EOB @ 1.53° Inc. / 235.01° Azm
12595.8	1.53	235.01	11915.0	-3089.6	1096.6	0.00	0.00	3278.4	TD @ 12595.8' MD / 11915.0' TVD

#### DESIGN TARGET DETAILS

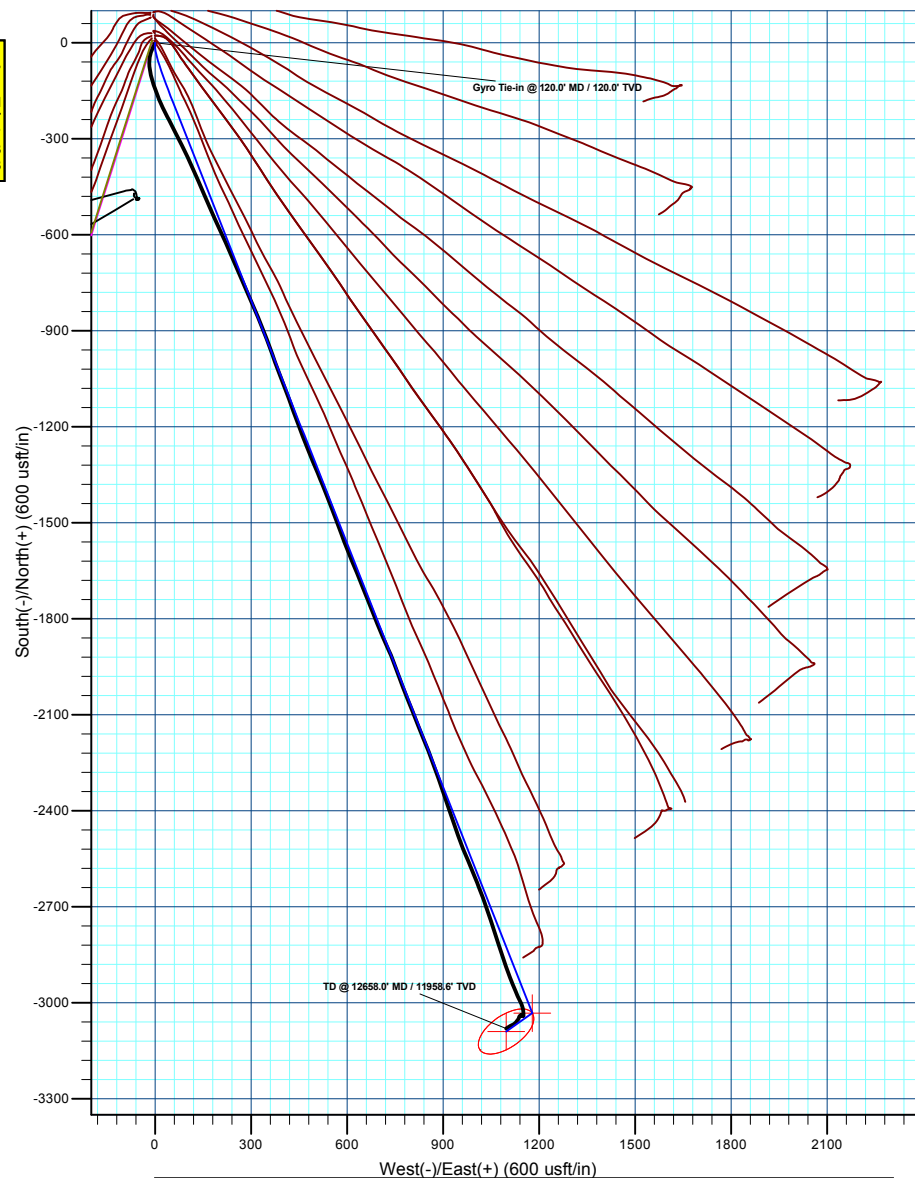
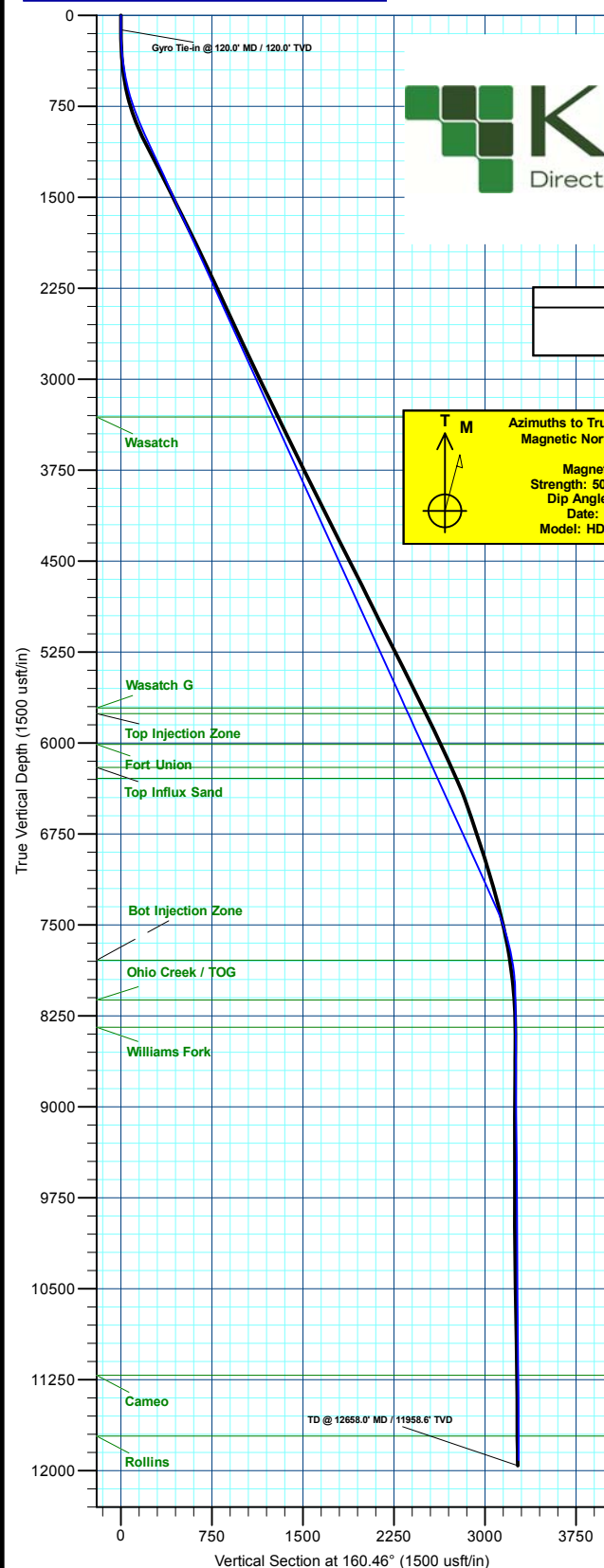
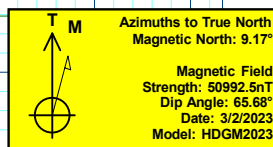
Name	TVD	+N/-S	+E/-W	North	East	Latitude	Longitude
25B-26 - OHCR2	8118.0	-3032.2	1178.6	14418318.15	2447119.75	39.668756	-108.133544
25B-26 - PBHL2	11915.0	-3089.6	1096.6	14418258.16	2447039.62	39.668599	-108.133835

#### WELL DETAILS: BJU B26 FED 25B-26 496

+N/-S	+E/-W	Ground Level : 8211.0	North	East	Latitude	Longitude
0.0	0.0		14421311.20	2445845.00	39.677078	-108.137729
						25B-26

#### ANNOTATIONS

MD	Inc	Azi	TVD	+N/-S	+E/-W	VSect	Departure	Annotation
120.0	0.10	159.69	120.0	-0.1	0.2	0.2	0.2	Gyro Tie-in @ 120.0' MD / 120.0' TVD
12658.0	3.00	234.80	11958.6	-3080.4	1097.0	3269.9	3352.5	TD @ 12658.0' MD / 11958.6' TVD



Plan: Design #3 (BJU B26 FED 25B-26 496/Wellbore #1)

Created By: Will Jircik Date: 21:11, March 12 2023



## **Caerus Oil & Gas**

**Garfield County, CO**

**BJU B26 496 Pad**

**BJU B26 FED 25B-26 496 - Slot 25B-26**

**Wellbore #1**

**Design: Wellbore #1**

## **KLX Survey Report**

**12 March, 2023**



<b>Company:</b>	Caerus Oil & Gas	<b>Local Co-ordinate Reference:</b>	Well BJU B26 FED 25B-26 496 - Slot 25B-26
<b>Project:</b>	Garfield County, CO	<b>TVD Reference:</b>	RKB @ 8241.0usft (30')
<b>Site:</b>	BJU B26 496 Pad	<b>MD Reference:</b>	RKB @ 8241.0usft (30')
<b>Well:</b>	BJU B26 FED 25B-26 496	<b>North Reference:</b>	True
<b>Wellbore:</b>	Wellbore #1	<b>Survey Calculation Method:</b>	Minimum Curvature
<b>Design:</b>	Wellbore #1	<b>Database:</b>	EDM 5000.1 Single User Db

<b>Project</b>	Garfield County, CO		
<b>Map System:</b>	Universal Transverse Mercator (US Survey Feet)	<b>System Datum:</b>	Mean Sea Level
<b>Geo Datum:</b>	NAD 1927 - Western US		
<b>Map Zone:</b>	Zone 12N (114 W to 108 W)		

Site		BJU B26 496 Pad			
Site Position:		Northing:	14,421,469.70 usft	Latitude:	39.677515
From:	Map	Easting:	2,445,821.30 usft	Longitude:	-108.137796
Position Uncertainty:	0.0 usft	Slot Radius:	13-3/16 "	Grid Convergence:	1.83 °

Well		BJU B26 FED 25B-26 496 - Slot 25B-26				
Well Position	+N/-S	0.0 usft	Northing:	14,421,311.20 usft	Latitude:	39.677078
	+E/-W	0.0 usft	Easting:	2,445,845.00 usft	Longitude:	-108.137729
Position Uncertainty		0.0 usft	Wellhead Elevation:	usft	Ground Level:	8,211.0 usft

<b>Wellbore</b>	Wellbore #1				
<b>Magnetics</b>	<b>Model Name</b>	<b>Sample Date</b>	<b>Declination (°)</b>	<b>Dip Angle (°)</b>	<b>Field Strength (nT)</b>
	HDGM2023	3/2/2023	9.17	65.68	50,992.50000000

<b>Design</b>	Wellbore #1				
<b>Audit Notes:</b>					
<b>Version:</b>	1.0	<b>Phase:</b>	ACTUAL	<b>Tie On Depth:</b>	0.0
<b>Vertical Section:</b>	<b>Depth From (TVD) (usft)</b>	<b>+N/-S (usft)</b>	<b>+E/-W (usft)</b>	<b>Direction (°)</b>	
	0.0	0.0	0.0	160.46	

<b>Survey Program</b>	<b>Date</b>	3/12/2023			
<b>From (usft)</b>	<b>To (usft)</b>	<b>Survey (Wellbore)</b>	<b>Tool Name</b>	<b>Description</b>	
30.0	120.0	Sfc Gyro (Wellbore #1)	GYRO-NS	OWSG Gyrocompass Gyro	
421.0	12,658.0	KLX MWD (Wellbore #1)	MWD	OWSG MWD - Standard	

<b>Survey</b>										
<b>Measured Depth (usft)</b>	<b>Inclination (°)</b>	<b>Azimuth (°)</b>	<b>Vertical Depth (usft)</b>	<b>+N/-S (usft)</b>	<b>+E/-W (usft)</b>	<b>Vertical Section (usft)</b>	<b>Dogleg Rate (°/100usft)</b>	<b>Build Rate (°/100usft)</b>	<b>Turn Rate (°/100usft)</b>	
0.0	0.00	0.00	0.0	0.0	0.0	0.0	0.00	0.00	0.00	
30.0	0.00	0.00	30.0	0.0	0.0	0.0	0.00	0.00	0.00	
60.0	0.17	103.46	60.0	0.0	0.0	0.0	0.57	0.57	0.00	
90.0	0.25	124.50	90.0	-0.1	0.1	0.1	0.37	0.27	70.13	
<b>Gyro Tie-in @ 120.0' MD / 120.0' TVD</b>										
120.0	0.10	159.69	120.0	-0.1	0.2	0.2	0.59	-0.50	117.30	
421.0	7.80	206.70	420.1	-18.6	-8.9	14.6	2.57	2.56	15.62	
512.0	10.30	196.70	509.9	-32.0	-14.0	25.4	3.24	2.75	-10.99	
606.0	12.90	186.70	602.0	-50.4	-17.7	41.6	3.49	2.77	-10.64	
701.0	15.60	175.30	694.1	-73.7	-17.8	63.5	4.09	2.84	-12.00	

<b>Company:</b>	Caerus Oil & Gas	<b>Local Co-ordinate Reference:</b>	Well BJU B26 FED 25B-26 496 - Slot 25B-26
<b>Project:</b>	Garfield County, CO	<b>TVD Reference:</b>	RKB @ 8241.0usft (30')
<b>Site:</b>	BJU B26 496 Pad	<b>MD Reference:</b>	RKB @ 8241.0usft (30')
<b>Well:</b>	BJU B26 FED 25B-26 496	<b>North Reference:</b>	True
<b>Wellbore:</b>	Wellbore #1	<b>Survey Calculation Method:</b>	Minimum Curvature
<b>Design:</b>	Wellbore #1	<b>Database:</b>	EDM 5000.1 Single User Db

Survey										
Measured Depth (usft)	Inclination (°)	Azimuth (°)	Vertical Depth (usft)	+N/-S (usft)	+E/-W (usft)	Vertical Section (usft)	Dogleg Rate (°/100usft)	Build Rate (°/100usft)	Turn Rate (°/100usft)	
795.0	18.30	168.50	784.0	-100.8	-13.9	90.3	3.56	2.87	-7.23	
889.0	20.40	160.70	872.7	-130.7	-5.5	121.3	3.54	2.23	-8.30	
984.0	24.30	158.20	960.6	-164.5	7.2	157.4	4.22	4.11	-2.63	
1,079.0	26.70	154.60	1,046.3	-201.9	23.7	198.2	3.01	2.53	-3.79	
1,152.4	27.17	153.42	1,111.8	-231.8	38.2	231.2	0.97	0.64	-1.61	
1,173.0	27.30	153.10	1,130.1	-240.2	42.5	240.6	0.95	0.63	-1.55	
1,268.0	28.50	152.50	1,214.0	-279.8	62.8	284.6	1.30	1.26	-0.63	
1,363.0	26.90	153.20	1,298.1	-319.0	82.9	328.4	1.72	-1.68	0.74	
1,457.0	26.80	155.20	1,382.0	-357.3	101.4	370.6	0.97	-0.11	2.13	
1,552.0	26.70	156.00	1,466.8	-396.2	119.1	413.2	0.39	-0.11	0.84	
1,646.0	25.80	156.90	1,551.1	-434.3	135.7	454.7	1.05	-0.96	0.96	
1,741.0	26.70	156.60	1,636.3	-472.9	152.3	496.6	0.96	0.95	-0.32	
1,836.0	26.20	156.10	1,721.4	-511.7	169.3	538.8	0.58	-0.53	-0.53	
1,930.0	25.70	155.60	1,805.9	-549.2	186.1	579.8	0.58	-0.53	-0.53	
2,025.0	26.50	155.20	1,891.2	-587.2	203.5	621.5	0.86	0.84	-0.42	
2,119.0	26.10	155.80	1,975.5	-625.1	220.8	662.9	0.51	-0.43	0.64	
2,214.0	25.40	156.40	2,061.1	-662.8	237.5	704.1	0.79	-0.74	0.63	
2,309.0	25.70	157.10	2,146.8	-700.5	253.7	745.0	0.45	0.32	0.74	
2,404.0	24.30	156.90	2,232.9	-737.4	269.3	785.1	1.48	-1.47	-0.21	
2,498.0	24.80	156.80	2,318.4	-773.4	284.7	824.0	0.53	0.53	-0.11	
2,593.0	25.80	156.70	2,404.3	-810.7	300.7	864.6	1.05	1.05	-0.11	
2,688.0	24.50	155.90	2,490.2	-847.6	316.9	904.8	1.41	-1.37	-0.84	
2,782.0	24.40	157.70	2,575.8	-883.4	332.3	943.6	0.80	-0.11	1.91	
2,877.0	25.40	160.30	2,662.0	-920.7	346.6	983.6	1.56	1.05	2.74	
2,972.0	26.00	160.50	2,747.6	-959.5	360.4	1,024.8	0.64	0.63	0.21	
3,068.0	24.40	159.30	2,834.5	-997.9	374.4	1,065.7	1.75	-1.67	-1.25	
3,163.0	24.70	159.30	2,920.9	-1,034.8	388.4	1,105.1	0.32	0.32	0.00	
3,257.0	26.40	159.50	3,005.7	-1,072.8	402.7	1,145.7	1.81	1.81	0.21	
3,352.0	26.40	159.60	3,090.8	-1,112.4	417.4	1,187.9	0.05	0.00	0.11	
3,447.0	26.20	159.70	3,175.9	-1,151.8	432.0	1,230.0	0.22	-0.21	0.11	
3,541.0	26.00	159.50	3,260.3	-1,190.6	446.5	1,271.4	0.23	-0.21	-0.21	
3,636.0	25.60	159.10	3,345.9	-1,229.3	461.1	1,312.7	0.46	-0.42	-0.42	
3,731.0	26.50	158.10	3,431.2	-1,268.1	476.3	1,354.4	1.05	0.95	-1.05	
3,825.0	26.00	157.60	3,515.5	-1,306.6	492.0	1,395.9	0.58	-0.53	-0.53	
3,920.0	25.10	157.10	3,601.2	-1,344.4	507.8	1,436.8	0.97	-0.95	-0.53	
4,015.0	25.90	158.60	3,687.0	-1,382.3	523.2	1,477.7	1.08	0.84	1.58	
4,109.0	25.50	158.30	3,771.7	-1,420.2	538.1	1,518.4	0.45	-0.43	-0.32	
4,204.0	26.30	158.60	3,857.1	-1,458.8	553.4	1,559.9	0.85	0.84	0.32	
4,298.0	27.30	159.50	3,941.0	-1,498.4	568.5	1,602.3	1.15	1.06	0.96	
4,393.0	26.30	160.10	4,025.8	-1,538.6	583.3	1,645.1	1.09	-1.05	0.63	
4,487.0	27.30	158.30	4,109.7	-1,578.2	598.4	1,687.5	1.37	1.06	-1.91	
4,582.0	26.70	157.40	4,194.4	-1,618.2	614.6	1,730.5	0.76	-0.63	-0.95	
4,677.0	25.90	157.90	4,279.6	-1,657.1	630.6	1,772.6	0.87	-0.84	0.53	

<b>Company:</b>	Caerus Oil & Gas	<b>Local Co-ordinate Reference:</b>	Well BJU B26 FED 25B-26 496 - Slot 25B-26
<b>Project:</b>	Garfield County, CO	<b>TVD Reference:</b>	RKB @ 8241.0usft (30')
<b>Site:</b>	BJU B26 496 Pad	<b>MD Reference:</b>	RKB @ 8241.0usft (30')
<b>Well:</b>	BJU B26 FED 25B-26 496	<b>North Reference:</b>	True
<b>Wellbore:</b>	Wellbore #1	<b>Survey Calculation Method:</b>	Minimum Curvature
<b>Design:</b>	Wellbore #1	<b>Database:</b>	EDM 5000.1 Single User Db

Survey									
Measured Depth (usft)	Inclination (°)	Azimuth (°)	Vertical Depth (usft)	+N/-S (usft)	+E/-W (usft)	Vertical Section (usft)	Dogleg Rate (°/100usft)	Build Rate (°/100usft)	Turn Rate (°/100usft)
4,771.0	27.70	157.90	4,363.5	-1,696.4	646.6	1,814.9	1.91	1.91	0.00
4,866.0	27.60	158.30	4,447.6	-1,737.3	663.0	1,859.0	0.22	-0.11	0.42
4,960.0	26.20	158.80	4,531.4	-1,776.8	678.6	1,901.5	1.51	-1.49	0.53
5,055.0	27.00	157.20	4,616.4	-1,816.3	694.5	1,944.0	1.13	0.84	-1.68
5,150.0	26.50	156.60	4,701.2	-1,855.6	711.3	1,986.6	0.60	-0.53	-0.63
5,245.0	25.70	156.20	4,786.5	-1,893.9	728.0	2,028.3	0.86	-0.84	-0.42
5,339.0	26.70	158.80	4,870.9	-1,932.2	743.9	2,069.8	1.62	1.06	2.77
5,434.0	26.00	159.90	4,956.0	-1,971.7	758.8	2,111.9	0.90	-0.74	1.16
5,529.0	27.10	159.10	5,041.0	-2,011.5	773.6	2,154.4	1.22	1.16	-0.84
5,623.0	27.10	158.30	5,124.7	-2,051.4	789.2	2,197.2	0.39	0.00	-0.85
5,718.0	26.20	158.80	5,209.6	-2,091.0	804.8	2,239.8	0.98	-0.95	0.53
5,813.0	26.90	157.80	5,294.5	-2,130.5	820.5	2,282.2	0.87	0.74	-1.05
5,907.0	26.90	157.90	5,378.4	-2,169.9	836.5	2,324.7	0.05	0.00	0.11
6,002.0	26.00	158.20	5,463.4	-2,209.1	852.3	2,367.0	0.96	-0.95	0.32
6,096.0	27.40	160.20	5,547.4	-2,248.6	867.3	2,409.2	1.77	1.49	2.13
6,191.0	27.10	160.90	5,631.9	-2,289.6	881.8	2,452.7	0.46	-0.32	0.74
6,286.0	25.90	160.40	5,716.9	-2,329.6	895.8	2,495.1	1.28	-1.26	-0.53
6,380.0	24.90	160.70	5,801.8	-2,367.6	909.3	2,535.4	1.07	-1.06	0.32
6,475.0	25.40	161.80	5,887.8	-2,405.8	922.2	2,575.8	0.72	0.53	1.16
6,569.0	25.00	162.10	5,972.8	-2,443.9	934.7	2,615.8	0.45	-0.43	0.32
6,664.0	25.40	159.70	6,058.8	-2,482.1	947.9	2,656.2	1.16	0.42	-2.53
6,759.0	25.20	157.30	6,144.7	-2,519.9	962.8	2,696.8	1.10	-0.21	-2.53
6,853.0	24.00	157.50	6,230.2	-2,556.0	977.8	2,735.8	1.28	-1.28	0.21
6,948.0	23.40	157.70	6,317.1	-2,591.3	992.4	2,774.0	0.64	-0.63	0.21
7,042.0	22.50	157.80	6,403.7	-2,625.2	1,006.2	2,810.6	0.96	-0.96	0.11
7,137.0	20.30	159.70	6,492.1	-2,657.5	1,018.8	2,845.2	2.43	-2.32	2.00
7,232.0	19.30	160.50	6,581.5	-2,687.8	1,029.8	2,877.4	1.09	-1.05	0.84
7,326.0	18.50	161.00	6,670.5	-2,716.5	1,039.8	2,907.9	0.87	-0.85	0.53
7,421.0	18.00	161.60	6,760.7	-2,744.7	1,049.4	2,937.6	0.56	-0.53	0.63
7,516.0	17.50	161.80	6,851.2	-2,772.2	1,058.5	2,966.6	0.53	-0.53	0.21
7,610.0	17.10	162.80	6,940.9	-2,798.8	1,067.0	2,994.5	0.53	-0.43	1.06
7,705.0	16.50	161.80	7,031.9	-2,825.0	1,075.3	3,021.9	0.70	-0.63	-1.05
7,799.0	16.00	161.70	7,122.1	-2,850.0	1,083.5	3,048.2	0.53	-0.53	-0.11
7,894.0	15.70	160.50	7,213.5	-2,874.5	1,091.9	3,074.2	0.47	-0.32	-1.26
7,989.0	15.30	161.00	7,305.0	-2,898.5	1,100.3	3,099.6	0.44	-0.42	0.53
8,084.0	14.70	158.10	7,396.8	-2,921.5	1,108.9	3,124.1	1.01	-0.63	-3.05
8,178.0	13.70	158.30	7,487.9	-2,942.9	1,117.5	3,147.2	1.07	-1.06	0.21
8,273.0	12.20	157.70	7,580.5	-2,962.7	1,125.4	3,168.5	1.59	-1.58	-0.63
8,367.0	10.00	154.10	7,672.7	-2,979.2	1,132.8	3,186.5	2.45	-2.34	-3.83
8,462.0	8.60	153.10	7,766.5	-2,993.0	1,139.6	3,201.7	1.48	-1.47	-1.05
8,557.0	7.90	158.80	7,860.5	-3,005.4	1,145.1	3,215.3	1.13	-0.74	6.00
8,651.0	6.30	165.90	7,953.8	-3,016.4	1,148.7	3,226.9	1.94	-1.70	7.55
8,746.0	5.10	176.00	8,048.3	-3,025.7	1,150.3	3,236.2	1.64	-1.26	10.63

<b>Company:</b>	Caerus Oil & Gas	<b>Local Co-ordinate Reference:</b>	Well BJU B26 FED 25B-26 496 - Slot 25B-26
<b>Project:</b>	Garfield County, CO	<b>TVD Reference:</b>	RKB @ 8241.0usft (30')
<b>Site:</b>	BJU B26 496 Pad	<b>MD Reference:</b>	RKB @ 8241.0usft (30')
<b>Well:</b>	BJU B26 FED 25B-26 496	<b>North Reference:</b>	True
<b>Wellbore:</b>	Wellbore #1	<b>Survey Calculation Method:</b>	Minimum Curvature
<b>Design:</b>	Wellbore #1	<b>Database:</b>	EDM 5000.1 Single User Db

Survey									
Measured Depth (usft)	Inclination (°)	Azimuth (°)	Vertical Depth (usft)	+N/-S (usft)	+E/-W (usft)	Vertical Section (usft)	Dogleg Rate (°/100usft)	Build Rate (°/100usft)	Turn Rate (°/100usft)
8,841.0	4.00	177.30	8,143.0	-3,033.2	1,150.8	3,243.4	1.16	-1.16	1.37
8,935.0	1.90	176.50	8,236.9	-3,038.0	1,151.0	3,248.0	2.23	-2.23	-0.85
9,030.0	1.20	189.80	8,331.8	-3,040.6	1,150.9	3,250.4	0.82	-0.74	14.00
9,125.0	0.60	237.70	8,426.8	-3,041.8	1,150.3	3,251.4	0.96	-0.63	50.42
9,219.0	1.00	310.00	8,520.8	-3,041.6	1,149.3	3,250.8	1.06	0.43	76.91
9,314.0	1.20	285.90	8,615.8	-3,040.8	1,147.7	3,249.5	0.53	0.21	-25.37
9,409.0	1.10	269.50	8,710.8	-3,040.5	1,145.8	3,248.6	0.36	-0.11	-17.26
9,503.0	1.30	267.10	8,804.8	-3,040.5	1,143.9	3,248.0	0.22	0.21	-2.55
9,597.0	1.20	272.30	8,898.8	-3,040.6	1,141.8	3,247.3	0.16	-0.11	5.53
9,692.0	0.60	60.80	8,993.7	-3,040.3	1,141.3	3,246.9	1.83	-0.63	156.32
9,787.0	0.50	61.60	9,088.7	-3,039.8	1,142.1	3,246.7	0.11	-0.11	0.84
9,881.0	0.60	56.70	9,182.7	-3,039.4	1,142.8	3,246.6	0.12	0.11	-5.21
9,976.0	0.40	83.00	9,277.7	-3,039.1	1,143.6	3,246.5	0.32	-0.21	27.68
10,070.0	0.30	84.80	9,371.7	-3,039.0	1,144.1	3,246.7	0.11	-0.11	1.91
10,165.0	0.20	82.10	9,466.7	-3,039.0	1,144.6	3,246.7	0.11	-0.11	-2.84
10,259.0	0.10	208.40	9,560.7	-3,039.0	1,144.7	3,246.8	0.29	-0.11	134.36
10,354.0	0.20	306.90	9,655.7	-3,039.0	1,144.5	3,246.8	0.25	0.11	103.68
10,448.0	0.40	263.90	9,749.7	-3,038.9	1,144.1	3,246.5	0.31	0.21	-45.74
10,543.0	0.60	254.20	9,844.7	-3,039.1	1,143.2	3,246.4	0.23	0.21	-10.21
10,638.0	1.10	247.40	9,939.7	-3,039.6	1,141.9	3,246.4	0.54	0.53	-7.16
10,732.0	1.30	241.50	10,033.7	-3,040.4	1,140.2	3,246.7	0.25	0.21	-6.28
10,827.0	0.80	224.00	10,128.7	-3,041.4	1,138.7	3,247.1	0.62	-0.53	-18.42
10,922.0	0.80	200.20	10,223.7	-3,042.5	1,138.1	3,247.9	0.35	0.00	-25.05
11,016.0	1.00	193.30	10,317.7	-3,043.9	1,137.6	3,249.1	0.24	0.21	-7.34
11,111.0	1.20	201.50	10,412.6	-3,045.7	1,137.1	3,250.6	0.27	0.21	8.63
11,206.0	1.50	204.60	10,507.6	-3,047.7	1,136.2	3,252.2	0.32	0.32	3.26
11,300.0	1.50	203.80	10,601.6	-3,050.0	1,135.2	3,254.0	0.02	0.00	-0.85
11,395.0	1.70	215.00	10,696.5	-3,052.3	1,133.9	3,255.7	0.39	0.21	11.79
11,489.0	2.00	218.00	10,790.5	-3,054.7	1,132.1	3,257.4	0.34	0.32	3.19
11,584.0	1.90	214.80	10,885.4	-3,057.3	1,130.2	3,259.2	0.16	-0.11	-3.37
11,679.0	2.30	220.10	10,980.4	-3,060.0	1,128.0	3,261.1	0.47	0.42	5.58
11,773.0	2.00	223.10	11,074.3	-3,062.7	1,125.7	3,262.8	0.34	-0.32	3.19
11,867.0	1.80	230.50	11,168.3	-3,064.8	1,123.4	3,264.1	0.34	-0.21	7.87
11,962.0	1.70	237.30	11,263.2	-3,066.5	1,121.1	3,264.9	0.24	-0.11	7.16
12,056.0	1.60	241.40	11,357.2	-3,067.9	1,118.8	3,265.4	0.16	-0.11	4.36
12,151.0	1.70	236.30	11,452.1	-3,069.3	1,116.4	3,266.0	0.19	0.11	-5.37
12,246.0	1.90	247.30	11,547.1	-3,070.7	1,113.8	3,266.4	0.42	0.21	11.58
12,340.0	2.60	248.70	11,641.0	-3,072.1	1,110.4	3,266.5	0.75	0.74	1.49
12,435.0	2.80	239.40	11,735.9	-3,074.1	1,106.4	3,267.1	0.51	0.21	-9.79
12,529.0	2.90	235.30	11,829.8	-3,076.6	1,102.4	3,268.1	0.24	0.11	-4.36
12,593.0	3.00	234.80	11,893.7	-3,078.5	1,099.7	3,269.0	0.16	0.16	-0.78
<b>TD @ 12658.0' MD / 11958.6' TVD</b>									
12,658.0	3.00	234.80	11,958.6	-3,080.4	1,097.0	3,269.9	0.00	0.00	0.00



<b>Company:</b>	Caerus Oil & Gas	<b>Local Co-ordinate Reference:</b>	Well BJU B26 FED 25B-26 496 - Slot 25B-26
<b>Project:</b>	Garfield County, CO	<b>TVD Reference:</b>	RKB @ 8241.0usft (30')
<b>Site:</b>	BJU B26 496 Pad	<b>MD Reference:</b>	RKB @ 8241.0usft (30')
<b>Well:</b>	BJU B26 FED 25B-26 496	<b>North Reference:</b>	True
<b>Wellbore:</b>	Wellbore #1	<b>Survey Calculation Method:</b>	Minimum Curvature
<b>Design:</b>	Wellbore #1	<b>Database:</b>	EDM 5000.1 Single User Db

Design Annotations				
Measured Depth (usft)	Vertical Depth (usft)	Local Coordinates		Comment
		+N/-S (usft)	+E/-W (usft)	
120.0	120.0	-0.1	0.2	Gyro Tie-in @ 120.0' MD / 120.0' TVD
12,658.0	11,958.6	-3,080.4	1,097.0	TD @ 12658.0' MD / 11958.6' TVD

Checked By: _____	Approved By: _____	Date: _____
-------------------	--------------------	-------------