



Caerus Operating LLC

LONG STRING POST JOB REPORT

BJU B26 FED 25A-26-496 05-045-24442
S:26 T:4S R:96W Garfield CO

CallSheet #: 85971
Proposal #: 67312



LONG STRING Post Job Report

Attention: Mr. Cole Walton | (720) 880-6325 | cwalton@caerusoilandgas.com

Caerus Operating LLC

1001 17TH STREET | DENVER, CO 80202

Dear Mr. Cole Walton,

Thank you for the opportunity to provide cementing services on this well. American Cementing strives to achieve complete customer satisfaction. If you have any questions regarding the services or data provided, please contact American Cementing at any time.

Sincerely,

Zen Keith

SME North | (307) 757-7178 | zen.keith@americacementing.com

Field Office 28730 US-6, Rifle, CO 81650
Phone: (970) 657-1187

Job Details & Summary

Geometry

Type	Function	OD (in)	ID (in)	Weight (lb/ft)	Thread	Top (ft)	Bottom (ft)	Excess (%)
Casing	Outer	9.625	8.921	36	n/a	0	3022	0
Open Hole	Outer	n/a	8.75	n/a	n/a	3022	7377	25
Open Hole	Outer	n/a	8.75	n/a	n/a	7377	12587	0
Casing	Inner	4.5	4	11.6	n/a	0	12567.6	0

Equipment / People

Unit Type	Unit	Power Unit	Employee #1
Field Storage Silo	FSS-469		
Field Storage Silo	FSS-468		
Cement Trailer Float	CTF-161	TRB-421	Vega, Alexis
Light Duty Vehicles	LDV-061		Woronovitch, Collin
Cement Pump Float	CPF-053	TRH-964	Carrasco, Joel

Timing

Event	Date/Time
ERTS	00/04/2023 00:00
Call Out	3/3/2023 17:00
Depart Facility	3/3/2023 20:45
On Location	3/3/2023 23:45
Rig Up Iron	3/4/2023 00:30
Job Started	3/4/2023 07:00
Job Completed	3/4/2023 10:46
Rig Down Iron	3/4/2023 11:15
Depart Location	3/4/2023 13:00

General Job Information

Metrics	Value
Well Fluid Density	11.1 lb/gal
Well Fluid Type	WBM
Rig Circulation Vol	900 bbls
Rig Circulation Time	1.5 hours
Calculated Displacement	193.5 bbls
Actual Displacement	193.5 bbls
Total Spacer to Surface	0 bbls
Total CMT to Surface	0 bbls
Well Topped Out	N/A

Job Details

Metrics	Value
Flare Prior to Job	No
Flare During Job	No
Flare at End of Job	No
Well Full Prior to Job	Yes
Well Fluid Density Into Well	11.1 lb/gal
Well Fluid Density Out of Well	11.1 lb/gal

Job Details (cont.)

Metrics	Value
BHCT	214 °F
BHST	281 °F

Water Analysis

Metrics	Value	Recommended
Water Source	Upright Rig Tank	
Temperature	70 °F	50-80 °F
pH Level	7	5.5-8.5
Chlorides	300 mg/L	0-3000 mg/L
Total Alkalinity	80	0-1000
Total Hardness	120 mg/L	0-500 mg/L
Carbonates	NA mg/L	0-100 mg/L
Sulfates	200 mg/L	0-1500 mg/L
Potassium	240 mg/L	0-3000 mg/L
Iron	0 mg/L	0-300 mg/L

Circulation

Lost Circulation Experienced	Losses into Spacer	Losses into Cement	Losses into Displacement
Yes	0	185 INTO TAIL	0

Circulation Details

CAUGHT RETURNS AT 89 BBLS INTO SCAVENGER, LOST RETURNS AT 185 BBLS INTO TAIL CEMENT.

Job Execution Information

Fluid	Product	Function	Density (lb/gal)	Yield (ft ³ /sk)	Water Rq. (gal/sk)	Water Rq. (gal/bbl)	Volume (sks)	Volume (bbl)	Designed Top (ft)
1	Mud Flush	Flush	8.45			40.86		20.00	653
2	Scavenger	Scavenger	11.50	2.76	16.68		235.00	115.48	1000
3	Lead	Lead	12.70	2.00	11.00		839.00	299.39	3000
4	Tail	Tail	13.50	2.00	9.66		817.00	290.66	7377
5	Water + KCL Sub	DisplacementFinal	8.34			42.00		193.50	0

Job Fluid Details

Fluid	Type	Fluid	Product	Function	Conc.	Uom
1	Flush	Mud Flush	SAPP	Surfactant	10.00	lb/bbl
1	Flush	Mud Flush	SS-201	Surfactant	0.50	gal/bbl
2	Scavenger	Scavenger	ASTM TYPE I/II	Cement	100.00	%
2	Scavenger	Scavenger	BA-60	GasMigration	0.30	%BWOB
2	Scavenger	Scavenger	FP-24	Defoamer	0.30	%BWOB
2	Scavenger	Scavenger	GW-86	Viscosifier	0.20	%BWOB
2	Scavenger	Scavenger	IntegraSeal PHENO	LostCirculation	3.00	lb/sk
2	Scavenger	Scavenger	STATIC FREE	Other	0.01	lb/sk
2	Scavenger	Scavenger	XCem-916	Retarder	0.50	%BWOB
3	Lead	Lead	ASTM TYPE I/II	Cement	100.00	%
3	Lead	Lead	BA-60	GasMigration	0.30	%BWOB
3	Lead	Lead	FL-66	FluidLoss	0.50	%BWOB
3	Lead	Lead	FP-24	Defoamer	0.30	%BWOB
3	Lead	Lead	GW-86	Viscosifier	0.10	%BWOB
3	Lead	Lead	IntegraSeal PHENO	LostCirculation	3.00	lb/sk
3	Lead	Lead	STATIC FREE	Other	0.01	lb/sk
3	Lead	Lead	XCem-916	Retarder	0.50	%BWOB
4	Tail	Tail	CLASS G	Cement	70.00	%
4	Tail	Tail	FLY ASH (POZZOLAN)	Extender	30.00	%
4	Tail	Tail	BA-60	GasMigration	0.20	%BWOB
4	Tail	Tail	BENTONITE	Viscosifier	8.00	%BWOB
4	Tail	Tail	FL-24	FluidLoss	0.40	%BWOB
4	Tail	Tail	FP-24	Defoamer	0.30	%BWOB
4	Tail	Tail	IntegraSeal PHENO	LostCirculation	3.00	lb/sk
4	Tail	Tail	S-8	StrengthRetrogression	25.00	%BWOB
4	Tail	Tail	XCem-916	Retarder	0.40	%BWOB

Job Logs

Line	Event	Date (MM/DD/YY)	Time (HH:MM)	Density (lb/gal)	Pump Rate (bpm)	Pump Volume (bbls)	Pipe Pressure (psi)	Comment
1	Callout	3/3/2023	17:00					CREW CALLED OUT FOR A LOCATION TIME OF 1:00 3/4/23
2	Safety Meeting	3/3/2023	20:30					JOURNEY MANAGEMENT MEETING
3	Depart Location	3/3/2023	20:45					DEPART RCO YARD FOR RIG LOCATION
4	Arrive On Location	3/3/2023	23:45					CREW ARRIVED ON RIG LOCATION
5	Rig Up Iron	3/4/2023	00:30					PRE RIG UP SAFETY MEETING, RIG UP IRON AND EQUIPMENT
6	Waiting	3/4/2023	02:30					WAITING ON RIG TO FINISH RUNNING CASING. CASING ON BOTTOM @ 4:30
7	Rig Circulating	3/4/2023	05:00					RIG CIRCULATING THROUGH CEMENT HEAD. CIRCULATED FOR 1.5 HOURS, 900 BBLs TOTAL
8	Safety Meeting	3/4/2023	07:00					PRE JOB SAFETY MEETING WITH RIG CREW AND COMPANY MAN
9	Fill Lines	3/4/2023	07:37	8.34	4	5	234	FILL LINES WITH 5 BBLs FRESHWATER
10	Pressure Test Lines	3/4/2023	07:40	8.34			5060	PRESSURE TEST LINES AND PUMP TO 5000 PSI
11	Pump Spacer	3/4/2023	07:45	8.34	5.5	20	918	BEGIN PUMPING 20 BBL MUD FLUSH. SS201+SAPP
12	Pump Scavenger	3/4/2023	07:46	11.5	5.5	0	617	BEGIN PUMPING 11.5 PPG SCAVENGER CEMENT. WEIGHT VERIFIED WITH MUD SCALE. PARASITE AIR 400CFM TO 800 CFM AT START OF SCAVENGER
13	Pump Scavenger	3/4/2023	07:58	11.5	5.5	50	577	50 BBLs SCAVENGER PUMPED. CAUGHT RETURNS @ 89 BBLs PUMPED.
14	Pump Scavenger	3/4/2023	08:09	11.5	5	65	271	115 BBLs (235 SKS) TOTAL SCAVENGER CEMENT PUMPED
15	Pump Lead Cement	3/4/2023	08:12	12.7	5.6	0	345	BEGIN PUMPING 12.7 PPG LEAD CEMENT, WEIGHT VERIFIED BY MUD SCALE.
16	Pump Lead Cement	3/4/2023	08:21	12.7	5.6	50	432	50 BBLs LEAD CEMENT PUMPED. PARASITE AIR TO 1000CFM
17	Pump Lead Cement	3/4/2023	08:30	12.7	5.6	50	428	100 BBLs LEAD CEMENT PUMPED
18	Pump Lead Cement	3/4/2023	08:39	12.7	5.6	50	425	150 BBLs LEAD CEMENT PUMPED
19	Pump Lead Cement	3/4/2023	08:48	12.7	5.6	50	428	200 BBLs LEAD CEMENT PUMPED. AIR TO 800CFM @165 BBLs LEAD PUMPED
20	Pump Lead Cement	3/4/2023	08:57	12.7	5.6	50	430	250 BBLs LEAD CEMENT PUMPED
21	Pump Lead Cement	3/4/2023	09:05	12.7	5	49	366	299 BBLs (839 SKS) TOTAL LEAD CEMENT PUMPED
22	Pump Tail Cement	3/4/2023	09:05	13.5	5	0	499	BEGIN PUMPING 13.5 PPG TAIL CEMENT, WEIGHT VERIFIED BY MUD SCALE
23	Pump Tail Cement	3/4/2023	09:14	13.5	5.6	50	590	50 BBLs TAIL CEMENT PUMPED
24	Pump Tail Cement	3/4/2023	09:23	13.5	5.6	50	601	100 BBLs TAIL CEMENT PUMPED
25	Pump Tail Cement	3/4/2023	09:32	13.5	5.6	50	639	150 BBLs TAIL CEMENT PUMPED. PARASITE AIR BYPASSED @ 150 BBLs TAIL CEMENT PUMPED.
26	Pump Tail Cement	3/4/2023	09:41	13.5	5.5	50	607	200 BBLs TAIL CEMENT PUMPED. LOST RETURNS @ 185 BBLs TAIL CEMENT PUMPED.

Line	Event	Date (MM/DD/YY)	Time (HH:MM)	Density (lb/gal)	Pump Rate (bpm)	Pump Volume (bbls)	Pipe Pressure (psi)	Comment
27	Pump Tail Cement	3/4/2023	09:50	13.5	5.5	50	599	250 BBLS TAIL CEMENT PUMPED
28	Pump Tail Cement	3/4/2023	10:06	13.5	4	41	356	291 BBLS (817 SKS) TOTAL TAIL CEMENT PUMPED. RIG RECOVERED 635 BBLS TOTAL
29	Shutdown	3/4/2023	10:06					SHUTDOWN
30	Clean Pumps and Lines	3/4/2023	10:07					VALVE CEMENT HEAD TO WASH UP PUMP AND LINES TO PIT.
31	Drop Top Plug	3/4/2023	10:15					DROP TOP PLUG. WITNESSED BY COMPANY MAN
32	Pump Displacement	3/4/2023	10:15	8.34	4	0	416	BEGIN PUMPING DISPLACEMENT
33	Pump Displacement	3/4/2023	10:22	8.34	7.5	50	963	50 BBLS DISPLACEMENT PUMPED. CAUGHT PRESSURE AT 35 BBLS DISPLACED.
34	Pump Displacement	3/4/2023	10:29	8.34	7.5	50	1601	100 BBLS DISPLACEMENT PUMPED
35	Pump Displacement	3/4/2023	10:36	8.34	7.5	50	2325	150 BBLS DISPLACEMENT PUMPED
36	Pump Displacement	3/4/2023	10:42	8.34	4	43.5	2457	193.5 BBLS (CALCULATED) DISPLACEMENT PUMPED. MAX LIFT PRESSURE 2765 PSI @ 7.5 BPM PSI. RIG RECOVERED 635 BBLS
37	Land Plug	3/4/2023	10:42				3532	PLUG LANDED. FCP-2457 PSI BUMPED TO 3532 PSI PSI
38	Check Floats	3/4/2023	10:46					BLEED PRESSURE OFF. FLOATS HELD 2.5 BBLS BACK
39	Rig Down Iron	3/4/2023	11:15					PRE RIG DOWN SAFETY MEETING. RIG DOWN IRON AND EQUIPMENT
40	Depart Location	3/4/2023	13:00					CREW DEPARTS LOCATION FOR RCO YARD

Pump Diagrams

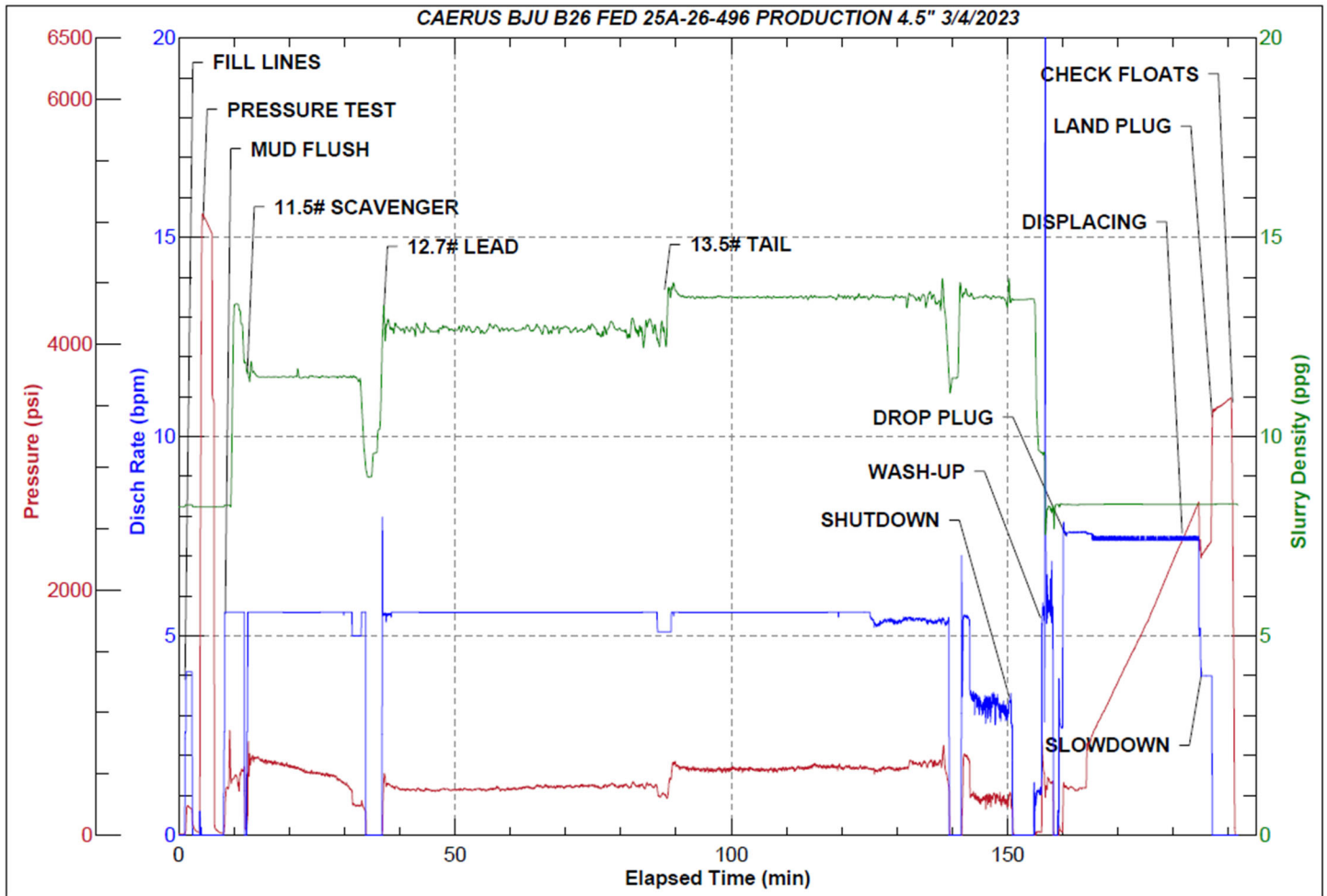


JobMaster Program Version 5.01C1

Job Number: 85971

Customer: CAERUS

Well Name: BJU B26 FED 25A-26-496



Job Start: Saturday, March 04, 2023