

Project: Garfield County, CO  
 Site: BJU B26 496 Pad  
 Well: BJU B26 FED 24B-26 496  
 Wellbore: Wellbore #1  
 Design: Design #3  
 Latitude: 39.677160  
 Longitude: -108.137735  
 Ground Level: 8211.0  
 RKB @ 8241.0usft (30')

PROJECT DETAILS: Garfield County, CO

Geodetic System: Universal Transverse Mercator (US Survey Feet)  
 Datum: NAD 1927 - Western US  
 Ellipsoid: Clarke 1866  
 Zone: Zone 12N (114 W to 108 W)  
 System Datum: Mean Sea Level

REFERENCE INFORMATION

Vertical (TVD) Reference: RKB @ 8241.0usft (30')  
 Section (VS) Reference: Slot - 24B-26(0.0N, 0.0E)  
 Measured Depth Reference: RKB @ 8241.0usft (30')  
 Calculation Method: Minimum Curvature

FORMATION TOP DETAILS

TVDPath	MDPath	Formation
3362.0	3559.9	Wasatch
5762.0	6171.5	Wasatch G
5809.0	6222.6	Top Injection Zone
6062.0	6497.9	Fort Union
6252.0	6704.7	Top Influx Sand
6343.0	6803.7	Bot Influx Sand
7843.0	8414.5	Bot Injection Zone
8126.0	8698.5	Ohio Creek / TOG
8383.0	8955.6	Williams Fork
11286.0	11859.6	Cameo
11786.0	12359.8	Rollins

SECTION DETAILS

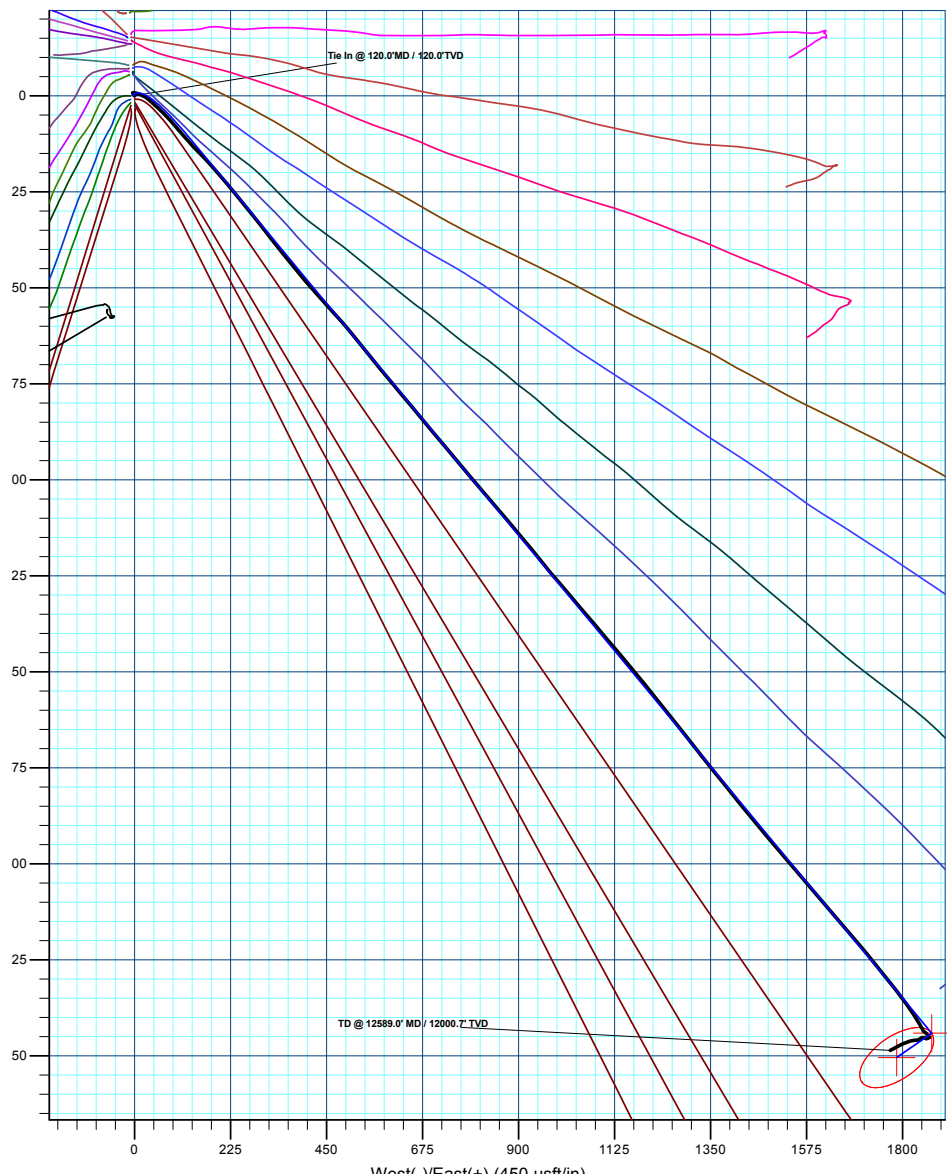
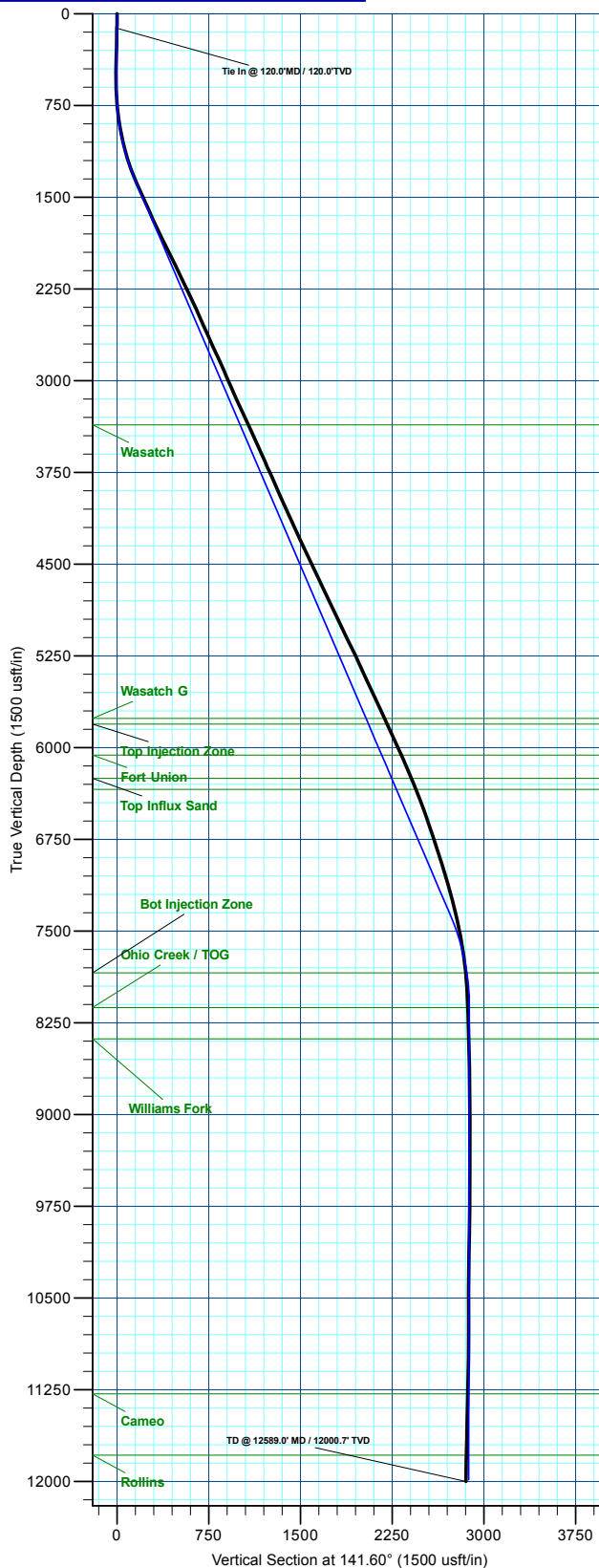
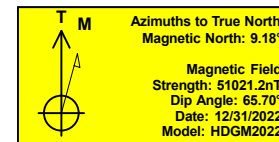
MD	Inc	Azi	TVD	+N/-S	+E/-W	Dleg	TFace	VSect	Annotation
120.0	0.62	323.23	120.0	0.5	-0.6	0.00	0.00	-0.7	Conductor Tie in
500.0	0.62	323.23	500.0	3.8	-3.1	0.00	0.00	-4.9	Build 3° / 100'
675.4	5.00	75.00	675.1	6.5	3.8	3.00	118.04	-2.8	EOB @ 5.00° Inc. / 75.00° Azm / Build 3° / 100'
1395.1	23.22	140.33	1372.7	-95.8	126.1	3.00	76.83	153.4	EOB @ 23.22° Inc. / 140.33° Azm
7924.4	23.22	140.33	7372.9	-2077.6	1769.5	0.00	0.00	2727.4	Drop 3° / 100'
8698.5	0.00	0.00	8126.0	-2196.8	1868.3	3.00	180.00	2882.1	EOD @ Vertical / Build 1.5° / 100'
8798.8	1.50	235.07	8226.3	-2197.5	1867.2	1.50	235.07	2882.0	EOB @ 1.50° Inc. / 235.07° Azm
12559.9	1.50	235.07	11986.0	-2254.0	1786.3	0.00	0.00	2876.0	TD @ 12559.9° MD / 11986.0° TVD

DESIGN TARGET DETAILS

Name	TVD	+N/-S	+E/-W	Northing	Easting	Latitude	Longitude
24B-26 - OHCR	8126.0	-2196.8	1868.3	14419205.07	24477779.84	39.677160	-108.131101
24B-26 - PBHL	11986.0	-2254.0	1786.3	14419145.20	24476997.70	39.670974	-108.131392

WELL DETAILS: BJU B26 FED 24B-26 496

+N/-S	+E/-W	Ground Level : 8211.0	Northing	Easting	Latitude	Longitude
0.0	0.0		14421341.10	2445842.40	39.677160	-108.137735



Plan: Design #3 (BJU B26 FED 24B-26 496/Wellbore #1)

Created By: Will Jircik Date: 15:53, January 14 2023



## **Caerus Oil & Gas**

**Garfield County, CO**

**BJU B26 496 Pad**

**BJU B26 FED 24B-26 496 - Slot 24B-26**

**Wellbore #1**

**Design: Wellbore #1**

## **KLX Survey Report**

**14 January, 2023**



<b>Company:</b>	Caerus Oil & Gas	<b>Local Co-ordinate Reference:</b>	Well BJU B26 FED 24B-26 496 - Slot 24B-26
<b>Project:</b>	Garfield County, CO	<b>TVD Reference:</b>	RKB @ 8241.0usft (30')
<b>Site:</b>	BJU B26 496 Pad	<b>MD Reference:</b>	RKB @ 8241.0usft (30')
<b>Well:</b>	BJU B26 FED 24B-26 496	<b>North Reference:</b>	True
<b>Wellbore:</b>	Wellbore #1	<b>Survey Calculation Method:</b>	Minimum Curvature
<b>Design:</b>	Wellbore #1	<b>Database:</b>	EDM 5000.1 Single User Db

<b>Project</b>	Garfield County, CO		
<b>Map System:</b>	Universal Transverse Mercator (US Survey Feet)	<b>System Datum:</b>	Mean Sea Level
<b>Geo Datum:</b>	NAD 1927 - Western US		
<b>Map Zone:</b>	Zone 12N (114 W to 108 W)		

Site		BJU B26 496 Pad							
Site Position:		Northing:	14,421,469.70	usft	Latitude:	39.677515			
From:	Map	Easting:	2,445,821.30	usft	Longitude:	-108.137796			
Position Uncertainty:		0.0	usft	Slot Radius:	13-3/16	"	Grid Convergence:	1.83	°

Well	BJU B26 FED 24B-26 496 - Slot 24B-26					
Well Position	+N/-S	0.0 usft	Northing:	14,421,341.10 usft	Latitude:	39.677160
	+E/-W	0.0 usft	Easting:	2,445,842.40 usft	Longitude:	-108.137735
Position Uncertainty		0.0 usft	Wellhead Elevation:	usft	Ground Level:	8,211.0 usft

<b>Wellbore</b>	Wellbore #1				
<b>Magnetics</b>	<b>Model Name</b>	<b>Sample Date</b>	<b>Declination (°)</b>	<b>Dip Angle (°)</b>	<b>Field Strength (nT)</b>
	HDGM2022	12/31/2022	9.18	65.70	51,021.20000000

<b>Design</b>	Wellbore #1				
<b>Audit Notes:</b>					
<b>Version:</b>	1.0	<b>Phase:</b>	ACTUAL	<b>Tie On Depth:</b>	0.0
<b>Vertical Section:</b>	<b>Depth From (TVD) (usft)</b>	<b>+N/-S (usft)</b>	<b>+E/-W (usft)</b>	<b>Direction (°)</b>	
	0.0	0.0	0.0	141.60	

<b>Survey Program</b>	<b>Date</b>	1/14/2023			
<b>From (usft)</b>	<b>To (usft)</b>	<b>Survey (Wellbore)</b>	<b>Tool Name</b>	<b>Description</b>	
30.0	120.0	Sfc Gyro (Wellbore #1)	GYRO-NS	OWSG Gyrocompass Gyro	
422.0	12,589.0	KLX MWD (Wellbore #1)	MWD	OWSG MWD - Standard	

<b>Survey</b>										
<b>Measured Depth (usft)</b>	<b>Inclination (°)</b>	<b>Azimuth (°)</b>	<b>Vertical Depth (usft)</b>	<b>+N/-S (usft)</b>	<b>+E/-W (usft)</b>	<b>Vertical Section (usft)</b>	<b>Dogleg Rate (°/100usft)</b>	<b>Build Rate (°/100usft)</b>	<b>Turn Rate (°/100usft)</b>	
0.0	0.00	0.00	0.0	0.0	0.0	0.0	0.00	0.00	0.00	
30.0	0.00	0.00	30.0	0.0	0.0	0.0	0.00	0.00	0.00	
60.0	0.53	302.58	60.0	0.1	-0.1	-0.1	1.77	1.77	0.00	
90.0	0.63	306.53	90.0	0.2	-0.4	-0.4	0.36	0.33	13.17	
<b>Tie In @ 120.0'MD / 120.0'TVD</b>										
120.0	0.62	323.23	120.0	0.5	-0.6	-0.7	0.61	-0.03	55.67	
422.0	1.71	326.70	421.9	5.6	-4.0	-6.9	0.36	0.36	1.15	
511.0	0.90	35.50	510.9	7.2	-4.4	-8.4	1.82	-0.91	77.30	
606.0	2.30	93.40	605.9	7.7	-2.0	-7.3	2.08	1.47	60.95	
701.0	5.20	106.70	700.7	6.4	4.0	-2.5	3.17	3.05	14.00	

<b>Company:</b>	Caerus Oil & Gas	<b>Local Co-ordinate Reference:</b>	Well BJU B26 FED 24B-26 496 - Slot 24B-26
<b>Project:</b>	Garfield County, CO	<b>TVD Reference:</b>	RKB @ 8241.0usft (30')
<b>Site:</b>	BJU B26 496 Pad	<b>MD Reference:</b>	RKB @ 8241.0usft (30')
<b>Well:</b>	BJU B26 FED 24B-26 496	<b>North Reference:</b>	True
<b>Wellbore:</b>	Wellbore #1	<b>Survey Calculation Method:</b>	Minimum Curvature
<b>Design:</b>	Wellbore #1	<b>Database:</b>	EDM 5000.1 Single User Db

Survey										
Measured Depth (usft)	Inclination (°)	Azimuth (°)	Vertical Depth (usft)	+N/-S (usft)	+E/-W (usft)	Vertical Section (usft)	Dogleg Rate (°/100usft)	Build Rate (°/100usft)	Turn Rate (°/100usft)	
795.0	7.50	111.00	794.1	3.0	13.8	6.3	2.50	2.45	4.57	
890.0	8.80	123.10	888.1	-3.2	25.7	18.5	2.26	1.37	12.74	
984.0	11.30	132.40	980.7	-13.4	38.5	34.4	3.16	2.66	9.89	
1,079.0	13.90	132.70	1,073.4	-27.4	53.8	54.9	2.74	2.74	0.32	
1,174.0	16.60	134.90	1,165.0	-44.7	71.8	79.6	2.91	2.84	2.32	
1,268.0	19.60	140.30	1,254.4	-66.3	91.4	108.7	3.65	3.19	5.74	
1,363.0	23.00	138.30	1,342.9	-92.5	113.9	143.2	3.66	3.58	-2.11	
1,458.0	23.70	137.20	1,430.1	-120.3	139.2	180.8	0.87	0.74	-1.16	
1,552.0	24.30	135.70	1,516.0	-148.0	165.6	218.8	0.91	0.64	-1.60	
1,646.0	24.70	139.20	1,601.5	-176.7	191.9	257.7	1.60	0.43	3.72	
1,741.0	24.10	140.40	1,688.0	-206.7	217.2	296.9	0.82	-0.63	1.26	
1,836.0	25.70	140.30	1,774.2	-237.5	242.8	336.9	1.68	1.68	-0.11	
1,930.0	26.10	141.90	1,858.8	-269.5	268.5	378.0	0.86	0.43	1.70	
2,025.0	26.50	141.30	1,943.9	-302.4	294.7	420.1	0.51	0.42	-0.63	
2,119.0	26.20	141.70	2,028.2	-335.1	320.6	461.8	0.37	-0.32	0.43	
2,214.0	26.20	141.40	2,113.4	-367.9	346.7	503.7	0.14	0.00	-0.32	
2,309.0	25.60	141.10	2,198.8	-400.3	372.7	545.2	0.65	-0.63	-0.32	
2,403.0	25.30	140.00	2,283.7	-431.5	398.4	585.6	0.60	-0.32	-1.17	
2,498.0	25.40	138.20	2,369.6	-462.2	425.0	626.2	0.82	0.11	-1.89	
2,593.0	24.00	137.80	2,455.9	-491.7	451.6	665.9	1.48	-1.47	-0.42	
2,687.0	24.10	138.10	2,541.7	-520.2	477.2	704.1	0.17	0.11	0.32	
2,782.0	23.30	140.30	2,628.7	-549.1	502.2	742.2	1.26	-0.84	2.32	
2,876.0	25.40	141.00	2,714.3	-579.1	526.7	781.0	2.26	2.23	0.74	
2,971.0	25.00	141.30	2,800.3	-610.6	552.1	821.4	0.44	-0.42	0.32	
3,065.0	23.60	140.30	2,886.0	-640.5	576.5	860.1	1.55	-1.49	-1.06	
3,159.0	23.60	140.40	2,972.1	-669.5	600.6	897.7	0.04	0.00	0.11	
3,254.0	24.10	140.10	3,059.0	-699.0	625.1	936.1	0.54	0.53	-0.32	
3,348.0	23.90	140.10	3,144.9	-728.4	649.6	974.3	0.21	-0.21	0.00	
3,443.0	24.70	140.30	3,231.5	-758.4	674.7	1,013.4	0.85	0.84	0.21	
3,538.0	24.30	140.10	3,317.9	-788.7	699.9	1,052.8	0.43	-0.42	-0.21	
3,632.0	25.20	139.80	3,403.3	-818.8	725.2	1,092.2	0.97	0.96	-0.32	
3,727.0	24.80	139.70	3,489.4	-849.4	751.2	1,132.3	0.42	-0.42	-0.11	
3,822.0	24.70	140.30	3,575.6	-879.9	776.7	1,172.0	0.28	-0.11	0.63	
3,916.0	23.30	140.70	3,661.5	-909.4	801.0	1,210.3	1.50	-1.49	0.43	
4,011.0	24.40	139.30	3,748.4	-938.8	825.7	1,248.7	1.30	1.16	-1.47	
4,106.0	23.30	139.00	3,835.3	-967.9	850.9	1,287.0	1.16	-1.16	-0.32	
4,200.0	23.30	139.70	3,921.6	-996.1	875.1	1,324.2	0.29	0.00	0.74	
4,295.0	24.90	140.80	4,008.3	-1,025.9	899.9	1,363.0	1.75	1.68	1.16	
4,389.0	24.90	140.20	4,093.6	-1,056.5	925.0	1,402.5	0.27	0.00	-0.64	
4,484.0	24.10	141.30	4,180.0	-1,087.0	950.0	1,441.9	0.97	-0.84	1.16	
4,578.0	25.00	139.90	4,265.5	-1,117.1	974.8	1,481.0	1.14	0.96	-1.49	
4,673.0	25.00	139.40	4,351.6	-1,147.7	1,000.8	1,521.1	0.22	0.00	-0.53	
4,768.0	25.20	139.40	4,437.7	-1,178.3	1,027.0	1,561.4	0.21	0.21	0.00	

<b>Company:</b>	Caerus Oil & Gas	<b>Local Co-ordinate Reference:</b>	Well BJU B26 FED 24B-26 496 - Slot 24B-26
<b>Project:</b>	Garfield County, CO	<b>TVD Reference:</b>	RKB @ 8241.0usft (30')
<b>Site:</b>	BJU B26 496 Pad	<b>MD Reference:</b>	RKB @ 8241.0usft (30')
<b>Well:</b>	BJU B26 FED 24B-26 496	<b>North Reference:</b>	True
<b>Wellbore:</b>	Wellbore #1	<b>Survey Calculation Method:</b>	Minimum Curvature
<b>Design:</b>	Wellbore #1	<b>Database:</b>	EDM 5000.1 Single User Db

Survey									
Measured Depth (usft)	Inclination (°)	Azimuth (°)	Vertical Depth (usft)	+N/-S (usft)	+E/-W (usft)	Vertical Section (usft)	Dogleg Rate (°/100usft)	Build Rate (°/100usft)	Turn Rate (°/100usft)
4,862.0	26.00	140.10	4,522.4	-1,209.3	1,053.2	1,602.0	0.91	0.85	0.74
4,957.0	25.00	139.50	4,608.2	-1,240.6	1,079.6	1,642.8	1.09	-1.05	-0.63
5,051.0	25.30	140.00	4,693.3	-1,271.1	1,105.4	1,682.8	0.39	0.32	0.53
5,146.0	25.00	139.20	4,779.3	-1,301.8	1,131.6	1,723.1	0.48	-0.32	-0.84
5,241.0	26.00	140.60	4,865.0	-1,333.1	1,157.9	1,764.0	1.23	1.05	1.47
5,336.0	25.80	141.80	4,950.5	-1,365.4	1,183.9	1,805.5	0.59	-0.21	1.26
5,431.0	25.10	140.70	5,036.3	-1,397.3	1,209.5	1,846.3	0.89	-0.74	-1.16
5,525.0	25.90	141.20	5,121.1	-1,428.7	1,235.0	1,886.8	0.88	0.85	0.53
5,620.0	26.40	140.80	5,206.4	-1,461.2	1,261.3	1,928.6	0.56	0.53	-0.42
5,715.0	25.20	142.30	5,291.9	-1,493.6	1,287.0	1,970.0	1.44	-1.26	1.58
5,809.0	24.20	141.70	5,377.3	-1,524.6	1,311.2	2,009.3	1.10	-1.06	-0.64
5,904.0	25.50	141.60	5,463.5	-1,555.9	1,336.0	2,049.2	1.37	1.37	-0.11
5,998.0	25.30	141.20	5,548.4	-1,587.4	1,361.1	2,089.5	0.28	-0.21	-0.43
6,093.0	24.40	140.80	5,634.6	-1,618.4	1,386.3	2,129.4	0.96	-0.95	-0.42
6,188.0	24.50	141.50	5,721.1	-1,649.0	1,410.9	2,168.7	0.32	0.11	0.74
6,282.0	25.70	140.30	5,806.2	-1,680.0	1,436.1	2,208.6	1.39	1.28	-1.28
6,377.0	24.90	140.50	5,892.1	-1,711.2	1,462.0	2,249.2	0.85	-0.84	0.21
6,471.0	23.40	140.80	5,977.9	-1,741.0	1,486.4	2,287.6	1.60	-1.60	0.32
6,566.0	24.10	139.40	6,064.8	-1,770.3	1,510.9	2,325.9	0.95	0.74	-1.47
6,660.0	24.20	139.10	6,150.6	-1,799.5	1,536.0	2,364.3	0.17	0.11	-0.32
6,755.0	22.20	139.40	6,237.9	-1,827.8	1,560.4	2,401.7	2.11	-2.11	0.32
6,850.0	22.10	139.80	6,325.9	-1,855.1	1,583.6	2,437.5	0.19	-0.11	0.42
6,944.0	20.50	139.60	6,413.5	-1,881.1	1,605.7	2,471.6	1.70	-1.70	-0.21
7,039.0	20.80	139.30	6,502.4	-1,906.6	1,627.5	2,505.1	0.33	0.32	-0.32
7,133.0	19.40	139.80	6,590.7	-1,931.2	1,648.5	2,537.4	1.50	-1.49	0.53
7,228.0	18.50	139.10	6,680.5	-1,954.6	1,668.5	2,568.2	0.98	-0.95	-0.74
7,323.0	18.20	140.10	6,770.7	-1,977.4	1,687.9	2,598.1	0.46	-0.32	1.05
7,417.0	18.10	139.80	6,860.0	-1,999.8	1,706.8	2,627.4	0.15	-0.11	-0.32
7,512.0	17.10	140.80	6,950.6	-2,021.9	1,725.1	2,656.1	1.10	-1.05	1.05
7,607.0	16.40	141.50	7,041.5	-2,043.2	1,742.3	2,683.5	0.77	-0.74	0.74
7,701.0	15.50	141.20	7,131.9	-2,063.4	1,758.4	2,709.3	0.96	-0.96	-0.32
7,796.0	15.30	142.00	7,223.5	-2,083.2	1,774.1	2,734.5	0.31	-0.21	0.84
7,890.0	14.60	141.50	7,314.3	-2,102.2	1,789.1	2,758.8	0.76	-0.74	-0.53
7,985.0	13.00	143.10	7,406.6	-2,120.1	1,803.0	2,781.4	1.73	-1.68	1.68
8,080.0	11.20	145.20	7,499.5	-2,136.2	1,814.6	2,801.3	1.95	-1.89	2.21
8,175.0	9.10	148.20	7,593.0	-2,150.2	1,823.9	2,818.0	2.28	-2.21	3.16
8,269.0	8.50	146.50	7,685.9	-2,162.3	1,831.6	2,832.3	0.70	-0.64	-1.81
8,364.0	6.80	149.10	7,780.0	-2,173.0	1,838.4	2,844.9	1.83	-1.79	2.74
8,458.0	5.10	151.40	7,873.5	-2,181.4	1,843.2	2,854.5	1.83	-1.81	2.45
8,553.0	3.80	153.50	7,968.2	-2,188.0	1,846.7	2,861.7	1.38	-1.37	2.21
8,648.0	2.20	142.00	8,063.1	-2,192.2	1,849.2	2,866.7	1.79	-1.68	-12.11
8,742.0	1.90	119.60	8,157.0	-2,194.4	1,851.7	2,869.9	0.90	-0.32	-23.83
8,837.0	1.70	128.20	8,252.0	-2,196.1	1,854.1	2,872.7	0.35	-0.21	9.05

<b>Company:</b>	Caerus Oil & Gas	<b>Local Co-ordinate Reference:</b>	Well BJU B26 FED 24B-26 496 - Slot 24B-26
<b>Project:</b>	Garfield County, CO	<b>TVD Reference:</b>	RKB @ 8241.0usft (30')
<b>Site:</b>	BJU B26 496 Pad	<b>MD Reference:</b>	RKB @ 8241.0usft (30')
<b>Well:</b>	BJU B26 FED 24B-26 496	<b>North Reference:</b>	True
<b>Wellbore:</b>	Wellbore #1	<b>Survey Calculation Method:</b>	Minimum Curvature
<b>Design:</b>	Wellbore #1	<b>Database:</b>	EDM 5000.1 Single User Db

Survey									
Measured Depth (usft)	Inclination (°)	Azimuth (°)	Vertical Depth (usft)	+N/-S (usft)	+E/-W (usft)	Vertical Section (usft)	Dogleg Rate (°/100usft)	Build Rate (°/100usft)	Turn Rate (°/100usft)
8,932.0	1.70	141.60	8,346.9	-2,198.0	1,856.1	2,875.5	0.42	0.00	14.11
9,026.0	1.80	149.00	8,440.9	-2,200.4	1,857.8	2,878.4	0.26	0.11	7.87
9,121.0	1.10	144.40	8,535.9	-2,202.4	1,859.1	2,880.8	0.75	-0.74	-4.84
9,216.0	0.70	144.70	8,630.8	-2,203.6	1,859.9	2,882.3	0.42	-0.42	0.32
9,310.0	1.30	155.20	8,724.8	-2,205.1	1,860.7	2,883.9	0.66	0.64	11.17
9,405.0	0.50	120.00	8,819.8	-2,206.3	1,861.5	2,885.3	0.99	-0.84	-37.05
9,500.0	0.60	75.00	8,914.8	-2,206.3	1,862.3	2,885.9	0.45	0.11	-47.37
9,594.0	0.30	71.90	9,008.8	-2,206.1	1,863.1	2,886.2	0.32	-0.32	-3.30
9,688.0	0.10	330.30	9,102.8	-2,206.0	1,863.2	2,886.2	0.36	-0.21	-108.09
9,783.0	0.30	235.90	9,197.8	-2,206.0	1,863.0	2,886.1	0.34	0.21	-99.37
9,878.0	0.40	234.60	9,292.8	-2,206.4	1,862.5	2,886.0	0.11	0.11	-1.37
9,972.0	0.80	234.50	9,386.8	-2,206.9	1,861.7	2,886.0	0.43	0.43	-0.11
10,067.0	0.80	241.20	9,481.8	-2,207.7	1,860.6	2,885.8	0.10	0.00	7.05
10,162.0	1.10	237.60	9,576.8	-2,208.5	1,859.3	2,885.6	0.32	0.32	-3.79
10,256.0	1.50	242.60	9,670.8	-2,209.5	1,857.4	2,885.3	0.44	0.43	5.32
10,351.0	1.10	275.40	9,765.7	-2,210.0	1,855.4	2,884.4	0.87	-0.42	34.53
10,446.0	0.90	320.90	9,860.7	-2,209.3	1,854.0	2,883.1	0.84	-0.21	47.89
10,540.0	0.90	322.50	9,954.7	-2,208.2	1,853.1	2,881.6	0.03	0.00	1.70
10,635.0	1.20	283.80	10,049.7	-2,207.3	1,851.7	2,880.0	0.79	0.32	-40.74
10,729.0	1.80	270.40	10,143.7	-2,207.1	1,849.2	2,878.3	0.74	0.64	-14.26
10,824.0	1.10	272.90	10,238.6	-2,207.0	1,846.8	2,876.8	0.74	-0.74	2.63
10,919.0	0.50	259.00	10,333.6	-2,207.1	1,845.5	2,876.0	0.66	-0.63	-14.63
11,013.0	0.90	235.00	10,427.6	-2,207.6	1,844.5	2,875.8	0.52	0.43	-25.53
11,107.0	1.70	233.20	10,521.6	-2,208.8	1,842.8	2,875.7	0.85	0.85	-1.91
11,202.0	1.40	234.20	10,616.6	-2,210.4	1,840.7	2,875.6	0.32	-0.32	1.05
11,296.0	1.40	233.50	10,710.5	-2,211.7	1,838.9	2,875.5	0.02	0.00	-0.74
11,391.0	1.20	248.60	10,805.5	-2,212.8	1,837.0	2,875.2	0.42	-0.21	15.89
11,486.0	0.80	266.80	10,900.5	-2,213.2	1,835.4	2,874.5	0.53	-0.42	19.16
11,580.0	0.90	281.40	10,994.5	-2,213.1	1,834.0	2,873.6	0.25	0.11	15.53
11,675.0	1.10	268.10	11,089.5	-2,212.9	1,832.4	2,872.5	0.32	0.21	-14.00
11,770.0	1.90	263.20	11,184.4	-2,213.2	1,829.9	2,871.1	0.85	0.84	-5.16
11,864.0	3.10	261.10	11,278.3	-2,213.7	1,825.9	2,869.0	1.28	1.28	-2.23
11,959.0	3.80	254.40	11,373.2	-2,215.0	1,820.3	2,866.5	0.85	0.74	-7.05
12,053.0	3.60	251.50	11,467.0	-2,216.8	1,814.5	2,864.3	0.29	-0.21	-3.09
12,148.0	3.80	249.40	11,561.8	-2,218.8	1,808.7	2,862.3	0.25	0.21	-2.21
12,243.0	4.50	249.30	11,656.5	-2,221.2	1,802.3	2,860.3	0.74	0.74	-0.11
12,337.0	5.40	243.90	11,750.2	-2,224.5	1,794.9	2,858.2	1.08	0.96	-5.74
12,432.0	5.90	241.70	11,844.7	-2,228.8	1,786.6	2,856.4	0.57	0.53	-2.32
12,527.0	6.70	240.30	11,939.1	-2,233.8	1,777.4	2,854.7	0.86	0.84	-1.47
<b>TD @ 12589.0' MD / 12000.7' TVD</b>									
12,589.0	6.70	240.30	12,000.7	-2,237.4	1,771.2	2,853.6	0.00	0.00	0.00



<b>Company:</b>	Caerus Oil & Gas	<b>Local Co-ordinate Reference:</b>	Well BJU B26 FED 24B-26 496 - Slot 24B-26
<b>Project:</b>	Garfield County, CO	<b>TVD Reference:</b>	RKB @ 8241.0usft (30')
<b>Site:</b>	BJU B26 496 Pad	<b>MD Reference:</b>	RKB @ 8241.0usft (30')
<b>Well:</b>	BJU B26 FED 24B-26 496	<b>North Reference:</b>	True
<b>Wellbore:</b>	Wellbore #1	<b>Survey Calculation Method:</b>	Minimum Curvature
<b>Design:</b>	Wellbore #1	<b>Database:</b>	EDM 5000.1 Single User Db

Design Annotations				
Measured Depth (usft)	Vertical Depth (usft)	Local Coordinates		Comment
		+N/-S (usft)	+E/-W (usft)	
120.0	120.0	0.5	-0.6	Tie In @ 120.0'MD / 120.0'TVD
12,589.0	12,000.7	-2,237.4	1,771.2	TD @ 12589.0' MD / 12000.7' TVD

Checked By: _____	Approved By: _____	Date: _____
-------------------	--------------------	-------------