

Project: Garfield County, CO  
Site: BJU B26 496 Pad  
Well: BJU B26 FED 14D-26 496  
Wellbore: Wellbore #1  
Design: Design #2  
Latitude: 39.677158  
Longitude: -108.137770  
Ground Level: 8211.0  
RKB @ 8241.0usft (30')

PROJECT DETAILS: Garfield County, CO  
Geodetic System: Universal Transverse Mercator (US Survey Feet)  
Datum: NAD 1927 - Western US  
Ellipsoid: Clarke 1866  
Zone: Zone 12N (114 W to 108 W)  
System Datum: Mean Sea Level

REFERENCE INFORMATION  
Vertical (TVD) Reference: RKB @ 8241.0usft (30')  
Section (VS) Reference: Slot - 14D-26(0.0N, 0.0E)  
Measured Depth Reference: RKB @ 8241.0usft (30')  
Calculation Method: Minimum Curvature

#### FORMATION TOP DETAILS

TVDPath	MDPath	Formation
3301.0	3419.6	Wasatch
5701.0	5940.8	Wasatch G
5748.0	5990.1	Top Injection Zone
6001.0	6255.9	Fort Union
6191.0	6455.5	Top Influx Sand
6282.0	6551.1	Bot Influx Sand
7782.0	8119.9	Bot Injection Zone
8061.0	8399.9	Ohio Creek / TOG
8294.0	8633.0	Williams Fork
11153.0	11493.0	Cameo
11653.0	11993.2	Rollins

#### SECTION DETAILS

MD	Inc	Azi	TVD	+N/-S	+E/-W	Dleg	TFace	VSeet	Annotation
120.0	0.52	68.49	120.0	0.1	0.2	0.00	0.00	-0.2	Conductor Tie in
170.4	1.00	260.00	170.4	0.1	0.0	3.00	-172.42	-0.1	EOB @ 1.00° Inc. / 260.00° Azm
525.1	1.00	260.00	525.0	-0.9	-6.1	0.00	0.00	3.8	Build 3° / 100'
658.4	5.00	260.00	658.1	-2.2	-13.0	3.00	0.00	8.3	EOB @ 5.00° Inc. / 260.00° Azm / Build 3° / 100'
1169.5	17.83	207.04	1159.9	-76.2	-70.8	3.00	-67.60	101.2	EOB @ 17.83° Inc. / 207.04° Azm
7805.5	17.83	207.04	7476.1	-1886.3	-994.6	0.00	0.00	2131.6	Drop 3° / 100'
8399.9	0.00	0.00	8061.0	-1968.0	-1036.3	3.00	180.00	2223.3	EOD @ Vertical / Build 1.5° / 100'
8502.0	1.53	250.00	8163.1	-1968.5	-1037.6	1.50	250.00	2224.3	EOB @ 1.53° Inc. / 250.00° Azm
12193.2	1.53	250.00	11853.0	-2002.3	-1130.3	0.00	0.00	2299.2	TD @ 12193.2' MD / 11853.0' TVD

#### DESIGN TARGET DETAILS

Name	TVD	+N/-S	+E/-W	Northing	Easting	Latitude	Longitude
14D-26 - OHCR	8061.0	-1968.0	-1036.3	14419340.09	2444859.53	39.671757	-108.141450
14D-26 - PBHL	11853.0	-2002.3	-1130.3	14419302.90	2444766.70	39.671663	-108.141784

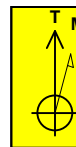
#### WELL DETAILS: BJU B26 FED 14D-26 496

+N/-S	+E/-W	Ground Level : 8211.0	Northing	Easting	Latitude	Longitude
0.0	0.0		14421340.20	2445832.50	39.677158	-108.137770

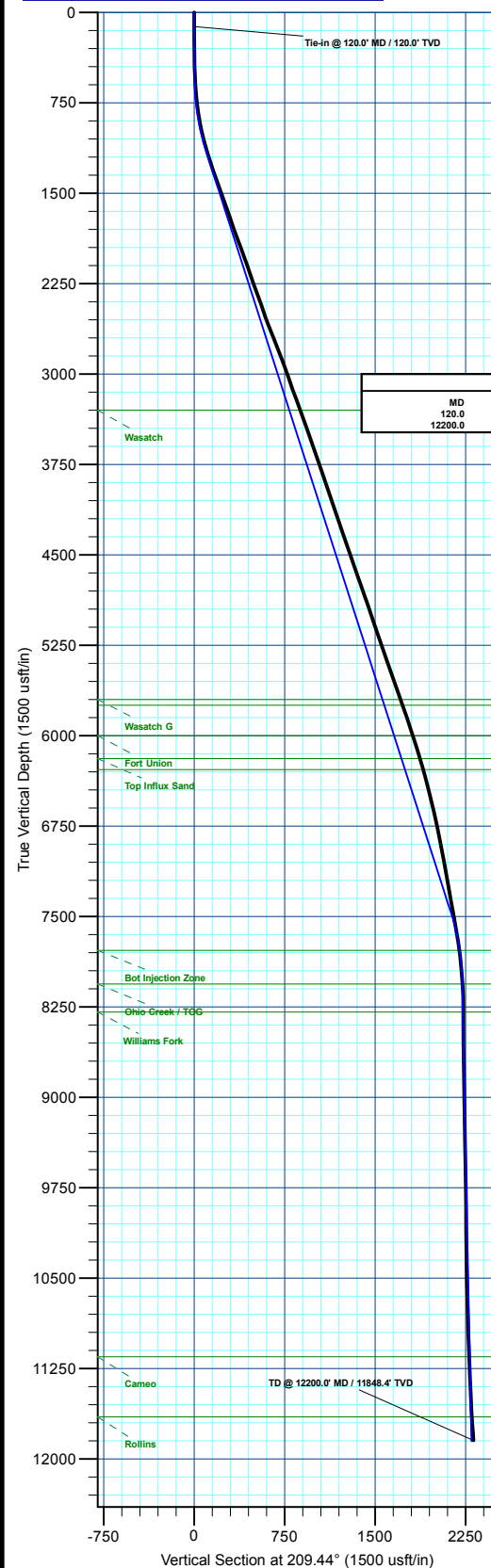


#### ANNOTATIONS

MD	Inc	Azi	TVD	+N/-S	+E/-W	VSeet	Departure	Annotation
120.0	0.52	68.49	120.0	0.1	0.2	-0.2	0.2	Tie-in @ 120.0' MD / 120.0' TVD
12200.0	5.60	249.00	11848.4	-1996.5	-1175.5	2316.4	2374.4	TD @ 12200.0' MD / 11848.4' TVD



Azimuths to True North  
Magnetic North: 9.20°  
Magnetic Field  
Strength: 51028.2nT  
Dip Angle: 65.70°  
Date: 12/5/2022  
Model: HDGM2022



Plan: Design #2 (BJU B26 FED 14D-26 496/Wellbore #1)

Created By: Will Jircik

Date: 8:02, December 19 2022



## **Caerus Oil & Gas**

**Garfield County, CO**

**BJU B26 496 Pad**

**BJU B26 FED 14D-26 496 - Slot 14D-26**

**Wellbore #1**

**Design: Wellbore #1**

## **KLX Survey Report**

**19 December, 2022**



<b>Company:</b>	Caerus Oil & Gas	<b>Local Co-ordinate Reference:</b>	Well BJU B26 FED 14D-26 496 - Slot 14D-26
<b>Project:</b>	Garfield County, CO	<b>TVD Reference:</b>	RKB @ 8241.0usft (30')
<b>Site:</b>	BJU B26 496 Pad	<b>MD Reference:</b>	RKB @ 8241.0usft (30')
<b>Well:</b>	BJU B26 FED 14D-26 496	<b>North Reference:</b>	True
<b>Wellbore:</b>	Wellbore #1	<b>Survey Calculation Method:</b>	Minimum Curvature
<b>Design:</b>	Wellbore #1	<b>Database:</b>	EDM 5000.1 Single User Db

<b>Project</b>	Garfield County, CO		
<b>Map System:</b>	Universal Transverse Mercator (US Survey Feet)	<b>System Datum:</b>	Mean Sea Level
<b>Geo Datum:</b>	NAD 1927 - Western US		
<b>Map Zone:</b>	Zone 12N (114 W to 108 W)		

Site		BJU B26 496 Pad							
Site Position:		Northing:	14,421,469.70	usft	Latitude:	39.677515			
From:	Map	Easting:	2,445,821.30	usft	Longitude:	-108.137796			
Position Uncertainty:		0.0	usft	Slot Radius:	13-3/16	"	Grid Convergence:	1.83	°

Well	BJU B26 FED 14D-26 496 - Slot 14D-26					
Well Position	+N/-S	0.0 usft	Northing:	14,421,340.20 usft	Latitude:	39.677159
	+E/-W	0.0 usft	Easting:	2,445,832.50 usft	Longitude:	-108.137771
Position Uncertainty		0.0 usft	Wellhead Elevation:	usft	Ground Level:	8,211.0 usft

<b>Wellbore</b>	Wellbore #1				
<b>Magnetics</b>	<b>Model Name</b>	<b>Sample Date</b>	<b>Declination (°)</b>	<b>Dip Angle (°)</b>	<b>Field Strength (nT)</b>
	HDGM2022	12/5/2022	9.20	65.70	51,028.20000000

<b>Design</b>	Wellbore #1				
<b>Audit Notes:</b>					
<b>Version:</b>	1.0	<b>Phase:</b>	ACTUAL	<b>Tie On Depth:</b>	0.0
<b>Vertical Section:</b>	<b>Depth From (TVD) (usft)</b>	<b>+N/-S (usft)</b>	<b>+E/-W (usft)</b>	<b>Direction (°)</b>	
	0.0	0.0	0.0	209.44	

<b>Survey Program</b>	<b>Date</b>	12/19/2022			
<b>From (usft)</b>	<b>To (usft)</b>	<b>Survey (Wellbore)</b>	<b>Tool Name</b>	<b>Description</b>	
30.0	120.0	Sfc Gyro (Wellbore #1)	GYRO-NS	OWSG Gyrocompass Gyro	
242.0	12,200.0	KLX MWD (Wellbore #1)	MWD	OWSG MWD - Standard	

<b>Survey</b>										
<b>Measured Depth (usft)</b>	<b>Inclination (°)</b>	<b>Azimuth (°)</b>	<b>Vertical Depth (usft)</b>	<b>+N/-S (usft)</b>	<b>+E/-W (usft)</b>	<b>Vertical Section (usft)</b>	<b>Dogleg Rate (°/100usft)</b>	<b>Build Rate (°/100usft)</b>	<b>Turn Rate (°/100usft)</b>	
0.0	0.00	0.00	0.0	0.0	0.0	0.0	0.00	0.00	0.00	
30.0	0.00	0.00	30.0	0.0	0.0	0.0	0.00	0.00	0.00	
60.0	0.05	351.94	60.0	0.0	0.0	0.0	0.17	0.17	0.00	
90.0	0.16	57.27	90.0	0.0	0.0	-0.1	0.49	0.37	217.77	
<b>Tie-in @ 120.0' MD / 120.0' TVD</b>										
120.0	0.52	68.49	120.0	0.1	0.2	-0.2	1.21	1.20	37.40	
242.0	1.50	275.40	242.0	0.5	-0.9	0.0	1.62	0.80	-125.48	
332.0	2.30	275.20	331.9	0.7	-3.9	1.2	0.89	0.89	-0.22	
422.0	2.90	270.10	421.8	0.9	-7.9	3.1	0.71	0.67	-5.67	
511.0	4.10	260.80	510.7	0.4	-13.3	6.2	1.49	1.35	-10.45	

<b>Company:</b>	Caerus Oil & Gas	<b>Local Co-ordinate Reference:</b>	Well BJU B26 FED 14D-26 496 - Slot 14D-26
<b>Project:</b>	Garfield County, CO	<b>TVD Reference:</b>	RKB @ 8241.0usft (30')
<b>Site:</b>	BJU B26 496 Pad	<b>MD Reference:</b>	RKB @ 8241.0usft (30')
<b>Well:</b>	BJU B26 FED 14D-26 496	<b>North Reference:</b>	True
<b>Wellbore:</b>	Wellbore #1	<b>Survey Calculation Method:</b>	Minimum Curvature
<b>Design:</b>	Wellbore #1	<b>Database:</b>	EDM 5000.1 Single User Db

Survey									
Measured Depth (usft)	Inclination (°)	Azimuth (°)	Vertical Depth (usft)	+N/-S (usft)	+E/-W (usft)	Vertical Section (usft)	Dogleg Rate (°/100usft)	Build Rate (°/100usft)	Turn Rate (°/100usft)
606.0	5.00	256.10	605.4	-1.1	-20.7	11.2	1.02	0.95	-4.95
701.0	6.40	244.50	699.9	-4.4	-29.5	18.3	1.90	1.47	-12.21
795.0	8.20	229.80	793.2	-11.0	-39.3	28.9	2.74	1.91	-15.64
890.0	9.50	216.00	887.0	-21.7	-49.1	43.0	2.61	1.37	-14.53
984.0	12.10	209.90	979.4	-36.5	-58.6	60.6	3.02	2.77	-6.49
1,079.0	14.50	211.30	1,071.8	-55.3	-69.7	82.5	2.55	2.53	1.47
1,174.0	17.50	208.60	1,163.1	-78.0	-82.8	108.6	3.25	3.16	-2.84
1,268.0	19.30	206.20	1,252.3	-104.4	-96.4	138.3	2.08	1.91	-2.55
1,363.0	19.70	205.50	1,341.9	-132.9	-110.2	169.9	0.49	0.42	-0.74
1,458.0	18.30	207.50	1,431.7	-160.6	-124.0	200.8	1.63	-1.47	2.11
1,552.0	20.10	208.50	1,520.4	-187.9	-138.5	231.7	1.95	1.91	1.06
1,647.0	19.70	205.40	1,609.8	-216.7	-153.2	264.0	1.19	-0.42	-3.26
1,741.0	18.50	205.10	1,698.6	-244.5	-166.3	294.7	1.28	-1.28	-0.32
1,836.0	19.90	205.60	1,788.3	-272.7	-179.7	325.8	1.48	1.47	0.53
1,930.0	20.60	204.70	1,876.5	-302.2	-193.5	358.3	0.82	0.74	-0.96
2,025.0	20.30	205.90	1,965.5	-332.2	-207.7	391.4	0.54	-0.32	1.26
2,119.0	20.00	207.60	2,053.8	-361.1	-222.2	423.7	0.70	-0.32	1.81
2,214.0	18.90	209.20	2,143.3	-388.9	-237.3	455.3	1.29	-1.16	1.68
2,309.0	19.10	208.60	2,233.2	-416.0	-252.2	486.3	0.29	0.21	-0.63
2,403.0	20.10	206.60	2,321.7	-444.0	-266.8	517.8	1.28	1.06	-2.13
2,498.0	19.80	204.80	2,411.0	-473.2	-280.9	550.1	0.72	-0.32	-1.89
2,592.0	19.00	203.30	2,499.7	-501.7	-293.6	581.2	1.00	-0.85	-1.60
2,686.0	21.00	207.40	2,588.0	-530.7	-307.4	613.3	2.60	2.13	4.36
2,781.0	21.70	207.90	2,676.5	-561.3	-323.5	647.8	0.76	0.74	0.53
2,876.0	21.70	208.00	2,764.8	-592.4	-339.9	682.9	0.04	0.00	0.11
2,937.0	21.20	206.50	2,821.5	-612.2	-350.2	705.2	1.22	-0.82	-2.46
3,071.0	20.30	208.70	2,946.8	-654.3	-372.1	752.7	0.89	-0.67	1.64
3,166.0	18.60	206.50	3,036.4	-682.3	-386.8	784.3	1.95	-1.79	-2.32
3,260.0	20.00	205.50	3,125.1	-710.2	-400.4	815.3	1.53	1.49	-1.06
3,355.0	20.40	205.40	3,214.3	-739.8	-414.5	848.0	0.42	0.42	-0.11
3,450.0	20.00	206.70	3,303.5	-769.3	-428.9	880.8	0.63	-0.42	1.37
3,544.0	19.90	206.40	3,391.8	-798.0	-443.2	912.8	0.15	-0.11	-0.32
3,639.0	19.90	206.80	3,481.1	-826.9	-457.7	945.1	0.14	0.00	0.42
3,733.0	18.70	207.20	3,569.9	-854.6	-471.8	976.1	1.28	-1.28	0.43
3,828.0	19.10	207.10	3,659.7	-882.0	-485.9	1,006.9	0.42	0.42	-0.11
3,923.0	18.30	207.60	3,749.7	-909.0	-499.9	1,037.3	0.86	-0.84	0.53
4,018.0	18.20	206.30	3,839.9	-935.5	-513.3	1,067.0	0.44	-0.11	-1.37
4,112.0	19.30	205.90	3,928.9	-962.7	-526.6	1,097.2	1.18	1.17	-0.43
4,207.0	19.40	205.90	4,018.6	-991.0	-540.4	1,128.6	0.11	0.11	0.00
4,301.0	19.20	206.30	4,107.3	-1,018.9	-554.0	1,159.6	0.26	-0.21	0.43
4,395.0	19.10	206.50	4,196.1	-1,046.5	-567.8	1,190.4	0.13	-0.11	0.21
4,490.0	19.10	206.70	4,285.9	-1,074.3	-581.7	1,221.5	0.07	0.00	0.21
4,585.0	18.70	207.00	4,375.7	-1,101.8	-595.6	1,252.2	0.43	-0.42	0.32

<b>Company:</b>	Caerus Oil & Gas	<b>Local Co-ordinate Reference:</b>	Well BJU B26 FED 14D-26 496 - Slot 14D-26
<b>Project:</b>	Garfield County, CO	<b>TVD Reference:</b>	RKB @ 8241.0usft (30')
<b>Site:</b>	BJU B26 496 Pad	<b>MD Reference:</b>	RKB @ 8241.0usft (30')
<b>Well:</b>	BJU B26 FED 14D-26 496	<b>North Reference:</b>	True
<b>Wellbore:</b>	Wellbore #1	<b>Survey Calculation Method:</b>	Minimum Curvature
<b>Design:</b>	Wellbore #1	<b>Database:</b>	EDM 5000.1 Single User Db

Survey									
Measured Depth (usft)	Inclination (°)	Azimuth (°)	Vertical Depth (usft)	+N/-S (usft)	+E/-W (usft)	Vertical Section (usft)	Dogleg Rate (°/100usft)	Build Rate (°/100usft)	Turn Rate (°/100usft)
4,680.0	19.30	208.10	4,465.6	-1,129.2	-609.9	1,283.1	0.74	0.63	1.16
4,774.0	19.00	208.10	4,554.4	-1,156.4	-624.4	1,314.0	0.32	-0.32	0.00
4,869.0	18.50	209.20	4,644.3	-1,183.2	-639.0	1,344.5	0.64	-0.53	1.16
4,963.0	19.60	206.20	4,733.2	-1,210.3	-653.3	1,375.1	1.57	1.17	-3.19
5,058.0	19.70	205.20	4,822.6	-1,239.1	-667.1	1,407.0	0.37	0.11	-1.05
5,153.0	18.90	205.80	4,912.3	-1,267.5	-680.6	1,438.3	0.87	-0.84	0.63
5,248.0	18.20	206.90	5,002.4	-1,294.5	-694.1	1,468.5	0.82	-0.74	1.16
5,342.0	19.40	205.80	5,091.4	-1,321.7	-707.5	1,498.8	1.33	1.28	-1.17
5,437.0	19.60	204.80	5,180.9	-1,350.4	-721.0	1,530.4	0.41	0.21	-1.05
5,532.0	18.90	202.70	5,270.6	-1,379.0	-733.7	1,561.6	1.04	-0.74	-2.21
5,626.0	19.40	204.50	5,359.4	-1,407.3	-746.0	1,592.2	0.82	0.53	1.91
5,721.0	19.50	205.60	5,449.0	-1,435.9	-759.4	1,623.8	0.40	0.11	1.16
5,816.0	19.00	205.30	5,538.7	-1,464.2	-772.9	1,655.0	0.54	-0.53	-0.32
5,910.0	18.50	204.10	5,627.7	-1,491.7	-785.5	1,685.1	0.67	-0.53	-1.28
6,005.0	19.60	206.30	5,717.5	-1,519.7	-798.7	1,716.0	1.38	1.16	2.32
6,099.0	19.60	207.40	5,806.0	-1,547.8	-813.0	1,747.5	0.39	0.00	1.17
6,194.0	18.80	208.30	5,895.7	-1,575.5	-827.5	1,778.8	0.90	-0.84	0.95
6,288.0	18.10	208.70	5,984.9	-1,601.6	-841.7	1,808.5	0.76	-0.74	0.43
6,383.0	17.40	209.00	6,075.4	-1,627.0	-855.7	1,837.5	0.74	-0.74	0.32
6,478.0	16.60	209.00	6,166.2	-1,651.3	-869.2	1,865.2	0.84	-0.84	0.00
6,572.0	16.00	208.80	6,256.5	-1,674.4	-881.9	1,891.6	0.64	-0.64	-0.21
6,667.0	15.00	210.00	6,348.0	-1,696.5	-894.4	1,917.0	1.11	-1.05	1.26
6,762.0	14.50	211.60	6,439.9	-1,717.3	-906.8	1,941.2	0.68	-0.53	1.68
6,856.0	13.70	212.10	6,531.0	-1,736.7	-918.8	1,964.1	0.86	-0.85	0.53
6,951.0	12.80	211.80	6,623.5	-1,755.2	-930.4	1,985.8	0.95	-0.95	-0.32
7,045.0	12.10	212.80	6,715.3	-1,772.3	-941.2	2,006.1	0.78	-0.74	1.06
7,140.0	11.60	214.20	6,808.3	-1,788.6	-952.0	2,025.5	0.61	-0.53	1.47
7,235.0	11.10	214.90	6,901.4	-1,804.0	-962.6	2,044.1	0.55	-0.53	0.74
7,329.0	10.80	215.10	6,993.7	-1,818.6	-972.8	2,061.9	0.32	-0.32	0.21
7,424.0	10.20	209.90	7,087.1	-1,833.2	-982.1	2,079.2	1.18	-0.63	-5.47
7,519.0	10.20	207.70	7,180.6	-1,847.9	-990.2	2,096.0	0.41	0.00	-2.32
7,613.0	10.20	208.70	7,273.1	-1,862.6	-998.1	2,112.6	0.19	0.00	1.06
7,708.0	10.00	208.20	7,366.7	-1,877.2	-1,006.0	2,129.3	0.23	-0.21	-0.53
7,802.0	10.10	208.70	7,459.2	-1,891.7	-1,013.8	2,145.7	0.14	0.11	0.53
7,897.0	10.10	208.10	7,552.7	-1,906.3	-1,021.8	2,162.4	0.11	0.00	-0.63
7,992.0	9.70	209.20	7,646.3	-1,920.7	-1,029.6	2,178.7	0.47	-0.42	1.16
8,086.0	8.10	213.00	7,739.2	-1,933.1	-1,037.0	2,193.2	1.81	-1.70	4.04
8,181.0	6.40	216.30	7,833.4	-1,943.0	-1,043.8	2,205.2	1.84	-1.79	3.47
8,276.0	5.00	221.80	7,928.0	-1,950.4	-1,049.7	2,214.5	1.58	-1.47	5.79
8,370.0	4.40	230.50	8,021.6	-1,955.7	-1,055.2	2,221.8	0.99	-0.64	9.26
8,465.0	3.50	230.60	8,116.4	-1,959.9	-1,060.3	2,227.9	0.95	-0.95	0.11
8,559.0	1.90	241.30	8,210.3	-1,962.4	-1,063.9	2,231.9	1.78	-1.70	11.38
8,654.0	1.50	296.20	8,305.3	-1,962.6	-1,066.4	2,233.3	1.69	-0.42	57.79

<b>Company:</b>	Caerus Oil & Gas	<b>Local Co-ordinate Reference:</b>	Well BJU B26 FED 14D-26 496 - Slot 14D-26
<b>Project:</b>	Garfield County, CO	<b>TVD Reference:</b>	RKB @ 8241.0usft (30')
<b>Site:</b>	BJU B26 496 Pad	<b>MD Reference:</b>	RKB @ 8241.0usft (30')
<b>Well:</b>	BJU B26 FED 14D-26 496	<b>North Reference:</b>	True
<b>Wellbore:</b>	Wellbore #1	<b>Survey Calculation Method:</b>	Minimum Curvature
<b>Design:</b>	Wellbore #1	<b>Database:</b>	EDM 5000.1 Single User Db

Survey									
Measured Depth (usft)	Inclination (°)	Azimuth (°)	Vertical Depth (usft)	+N/-S (usft)	+E/-W (usft)	Vertical Section (usft)	Dogleg Rate (°/100usft)	Build Rate (°/100usft)	Turn Rate (°/100usft)
8,749.0	0.90	296.80	8,400.2	-1,961.8	-1,068.2	2,233.4	0.63	-0.63	0.63
8,844.0	0.50	295.00	8,495.2	-1,961.2	-1,069.2	2,233.5	0.42	-0.42	-1.89
8,938.0	0.70	273.70	8,589.2	-1,961.0	-1,070.1	2,233.8	0.32	0.21	-22.66
9,033.0	0.70	276.00	8,684.2	-1,960.9	-1,071.3	2,234.3	0.03	0.00	2.42
9,127.0	0.90	259.40	8,778.2	-1,961.0	-1,072.6	2,235.0	0.32	0.21	-17.66
9,222.0	1.10	243.30	8,873.2	-1,961.6	-1,074.1	2,236.2	0.36	0.21	-16.95
9,317.0	1.10	230.00	8,968.2	-1,962.6	-1,075.7	2,237.8	0.27	0.00	-14.00
9,412.0	1.20	230.20	9,063.2	-1,963.8	-1,077.1	2,239.6	0.11	0.11	0.21
9,506.0	1.10	222.50	9,157.1	-1,965.1	-1,078.5	2,241.4	0.20	-0.11	-8.19
9,600.0	1.30	210.90	9,251.1	-1,966.7	-1,079.6	2,243.4	0.33	0.21	-12.34
9,695.0	1.80	212.30	9,346.1	-1,968.8	-1,081.0	2,245.9	0.53	0.53	1.47
9,789.0	1.40	223.80	9,440.1	-1,970.9	-1,082.6	2,248.5	0.54	-0.43	12.23
9,884.0	0.60	257.90	9,535.0	-1,971.9	-1,083.9	2,250.0	1.01	-0.84	35.89
9,979.0	0.60	247.60	9,630.0	-1,972.1	-1,084.8	2,250.7	0.11	0.00	-10.84
10,073.0	1.10	261.60	9,724.0	-1,972.5	-1,086.2	2,251.6	0.57	0.53	14.89
10,168.0	1.50	247.90	9,819.0	-1,973.1	-1,088.2	2,253.2	0.53	0.42	-14.42
10,263.0	1.20	262.20	9,914.0	-1,973.7	-1,090.3	2,254.7	0.47	-0.32	15.05
10,357.0	1.40	303.10	10,008.0	-1,973.2	-1,092.3	2,255.3	0.99	0.21	43.51
10,452.0	1.30	292.70	10,102.9	-1,972.1	-1,094.3	2,255.3	0.28	-0.11	-10.95
10,547.0	1.60	279.20	10,197.9	-1,971.5	-1,096.6	2,255.9	0.48	0.32	-14.21
10,641.0	1.70	273.10	10,291.9	-1,971.2	-1,099.2	2,257.0	0.21	0.11	-6.49
10,736.0	1.80	265.20	10,386.8	-1,971.3	-1,102.1	2,258.4	0.27	0.11	-8.32
10,830.0	1.70	257.40	10,480.8	-1,971.7	-1,105.0	2,260.2	0.27	-0.11	-8.30
10,925.0	1.80	249.40	10,575.7	-1,972.5	-1,107.7	2,262.3	0.28	0.11	-8.42
11,020.0	1.80	241.20	10,670.7	-1,973.8	-1,110.4	2,264.7	0.27	0.00	-8.63
11,114.0	2.20	250.10	10,764.6	-1,975.1	-1,113.4	2,267.3	0.54	0.43	9.47
11,208.0	2.30	250.50	10,858.6	-1,976.3	-1,116.9	2,270.1	0.11	0.11	0.43
11,303.0	2.40	253.70	10,953.5	-1,977.5	-1,120.6	2,273.0	0.17	0.11	3.37
11,398.0	2.60	246.10	11,048.4	-1,979.0	-1,124.5	2,276.1	0.41	0.21	-8.00
11,492.0	2.60	246.20	11,142.3	-1,980.7	-1,128.4	2,279.5	0.00	0.00	0.11
11,587.0	2.90	248.00	11,237.2	-1,982.5	-1,132.6	2,283.1	0.33	0.32	1.89
11,681.0	3.30	253.70	11,331.0	-1,984.1	-1,137.4	2,286.9	0.54	0.43	6.06
11,776.0	3.70	254.40	11,425.9	-1,985.7	-1,143.0	2,291.1	0.42	0.42	0.74
11,871.0	3.90	257.30	11,520.7	-1,987.2	-1,149.1	2,295.4	0.29	0.21	3.05
11,965.0	4.40	252.50	11,614.4	-1,989.0	-1,155.6	2,300.2	0.65	0.53	-5.11
12,060.0	5.10	248.60	11,709.1	-1,991.7	-1,163.0	2,306.1	0.81	0.74	-4.11
12,135.0	5.60	249.00	11,783.8	-1,994.2	-1,169.6	2,311.5	0.67	0.67	0.53
<b>TD @ 12200.0' MD / 11848.4' TVD</b>									
12,200.0	5.60	249.00	11,848.4	-1,996.5	-1,175.5	2,316.4	0.00	0.00	0.00



<b>Company:</b>	Caerus Oil & Gas	<b>Local Co-ordinate Reference:</b>	Well BJU B26 FED 14D-26 496 - Slot 14D-26
<b>Project:</b>	Garfield County, CO	<b>TVD Reference:</b>	RKB @ 8241.0usft (30')
<b>Site:</b>	BJU B26 496 Pad	<b>MD Reference:</b>	RKB @ 8241.0usft (30')
<b>Well:</b>	BJU B26 FED 14D-26 496	<b>North Reference:</b>	True
<b>Wellbore:</b>	Wellbore #1	<b>Survey Calculation Method:</b>	Minimum Curvature
<b>Design:</b>	Wellbore #1	<b>Database:</b>	EDM 5000.1 Single User Db

Design Annotations				
Measured Depth (usft)	Vertical Depth (usft)	Local Coordinates		Comment
		+N/-S (usft)	+E/-W (usft)	
120.0	120.0	0.1	0.2	Tie-in @ 120.0' MD / 120.0' TVD
12,200.0	11,848.4	-1,996.5	-1,175.5	TD @ 12200.0' MD / 11848.4' TVD

Checked By: _____	Approved By: _____	Date: _____
-------------------	--------------------	-------------