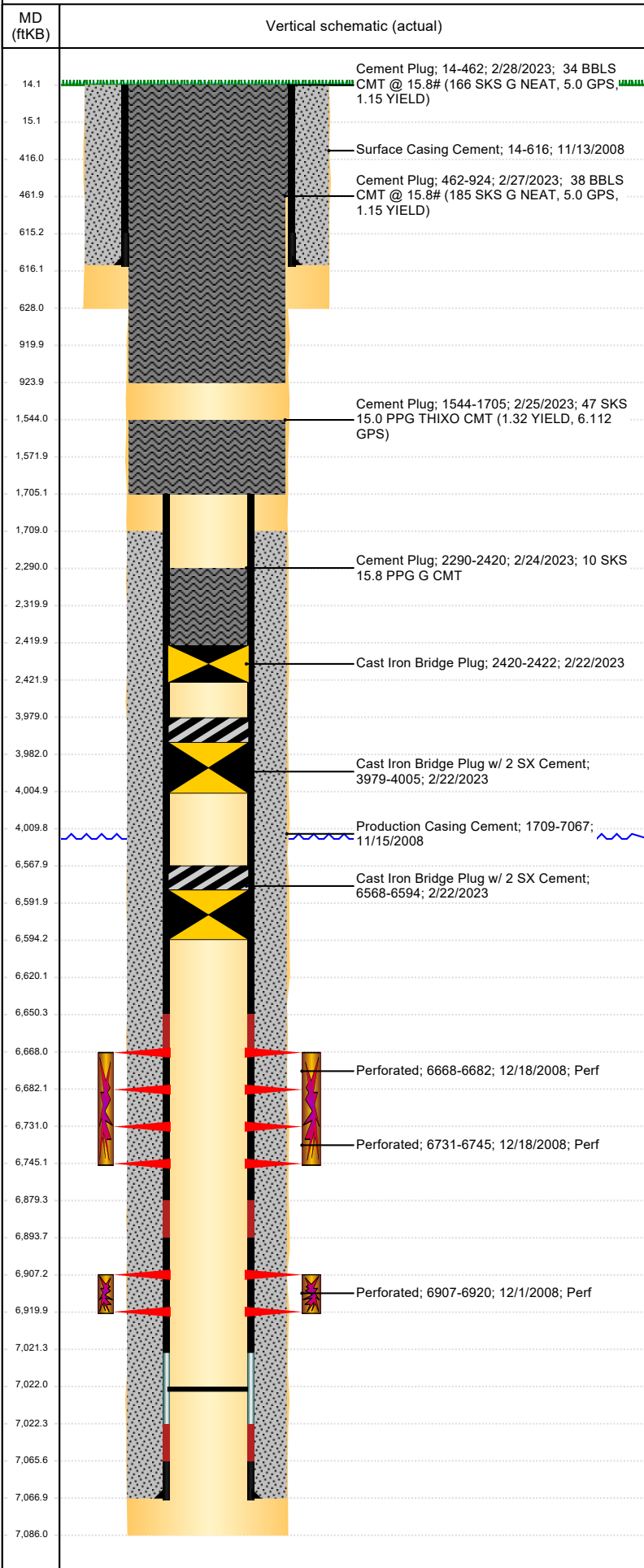




P&A Wellbore For State

Well Name: THOMPSON C28-23

Land, Original Hole, 5/10/2023 9:38:52 AM



Well Header										
Surface UWI 0512328003		Business Unit Rockies		Gov Auth Dist		Prod Tree Loc Land				
Orig. KB to Gnd (ft) 14.00		Original Spud Date 11/12/2008		Abandon Date 4/10/2023		Well Sub-Status PA		High Pres N		
Comment										
Surface Location (Congressional)										
Quarter 3 NE	Quarter 4 SE	Section 28	Township 4	Twnshp N N	Range 64	Rng E/W W	Latitude (°) 40° 16' 48.113" N	Longitude (°) 104° 33' 4.314" W		
Wellbore Sections										
Section Des		Hole Size (in)		Act Top (ftKB)		Act Btm (ftKB)				
SURFACE		12 1/4		14.0		628.0				
PRODUCTION		7 7/8		628.0		7,086.0				
Casing Strings										
Csg Des		Run Date		OD (in)		Wt/Len (lb/ft)		Grade		
Surface		11/12/2008		8 5/8		24.00		J-55		
Production Casing		11/15/2008		4 1/2		11.60		M-80		
Top Depth (MD) (ftKB)		Set Depth (MD) (ftKB)								
14		616								
Cement										
Des		Start Date		Top (ftKB)		Btm (ftKB)				
Surface Casing Cement		11/13/2008		14.0		616.0				
Production Casing Cement		11/15/2008		1,709.0		7,067.0				
Cement Plug		2/24/2023		2,290.0		2,420.0				
Cement Plug		2/25/2023		1,572.0		1,705.0				
Cement Plug		2/27/2023		416.0		924.0				
Cement Plug		2/28/2023		14.0		462.0				
Zone Statuses										
Zone Name		Status Date		Status		Fluid Type		Job		Prod Method
CODELL		12/20/2008		PR				DRILLING/COMPLETION - ORIGINAL, 11/11/2008 14:		
CODELL		2/2/2010		PR		Water				Flowing
NIOBRARA		9/14/2016		PR						
NIOBRARA		11/29/2016		SI						
Perforation Data										
Linked Zone		Explosive Type		Entered Shot Total		Top (ftKB)		Btm (ftKB)		Date
NIOBRARA, Original Hole		A		28		6,668.0		6,682.0		12/18/2008
NIOBRARA, Original Hole		B		28		6,731.0		6,745.0		12/18/2008
CODELL, Original Hole				52		6,907.0		6,920.0		12/1/2008
Stimulation Intervals										
Zone		Start Date		Top (ftKB)		Btm (ftKB)				
NIOBRARA, Original Hole		12/18/2008		6,668.0		6,745.0				
CODELL, Original Hole		12/18/2008		6,907.0		6,920.0				
Other In Hole										
Run Date		Des		Make		OD (in)		Top (ftKB)		Btm (ftKB)
2/22/2023		Cast Iron Bridge Plug w/ 2 SX Cement				3.99		6,568.0		6,594.0
2/22/2023		Cast Iron Bridge Plug w/ 2 SX Cement				3.99		3,979.0		4,005.0
2/22/2023		Cast Iron Bridge Plug				3.99		2,420.0		2,422.0
Logs										
Date		Type				Depth Top (MD) (ftKB)		Btm (ftKB)		
11/15/2008		Caliper/Comp. Density/Neutron/GR/SP/ML				2,690		7,068.0		
11/15/2008		DIL/GR/SP/Caliper				616		7,088.0		
12/1/2008		CBL/CCL/GR				1,568		7,030.0		
Plug Back Total Depths										
Date		Type		Com		PBSD (ftKB)				
11/15/2008		FLOAT COLLAR				7,022				
2/11/2009		PLUG REMNANTS				7,022				