

# **CRESTONE PEAK RESOURCES**

**WELD COUNTY**

**SEC 25-T4N-R65W**

**SHELTON 25W-25-06**

**OWB**

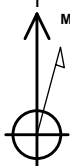
**Design: FINAL SURVEY**

## **Standard Survey Report**

**27 February, 2023**

Project: WELD COUNTY  
Site: SEC 25-T4N-R65W  
Well: SHELTON 25W-25-06  
Wellbore: OWB  
Design: FINAL SURVEY

PROJECT DETAILS: WELD COUNTY  
Geodetic System: US State Plane 1983  
Datum: North American Datum 1983  
Ellipsoid: GRS 1980  
Zone: Colorado Northern Zone  
System Datum: Mean Sea Level



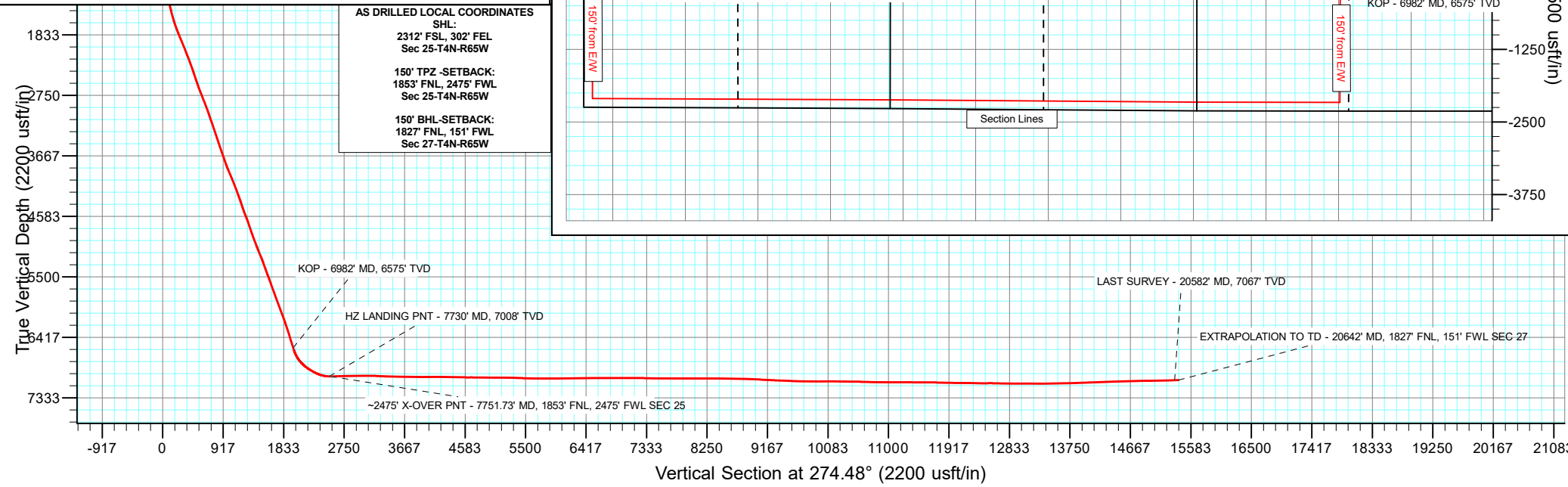
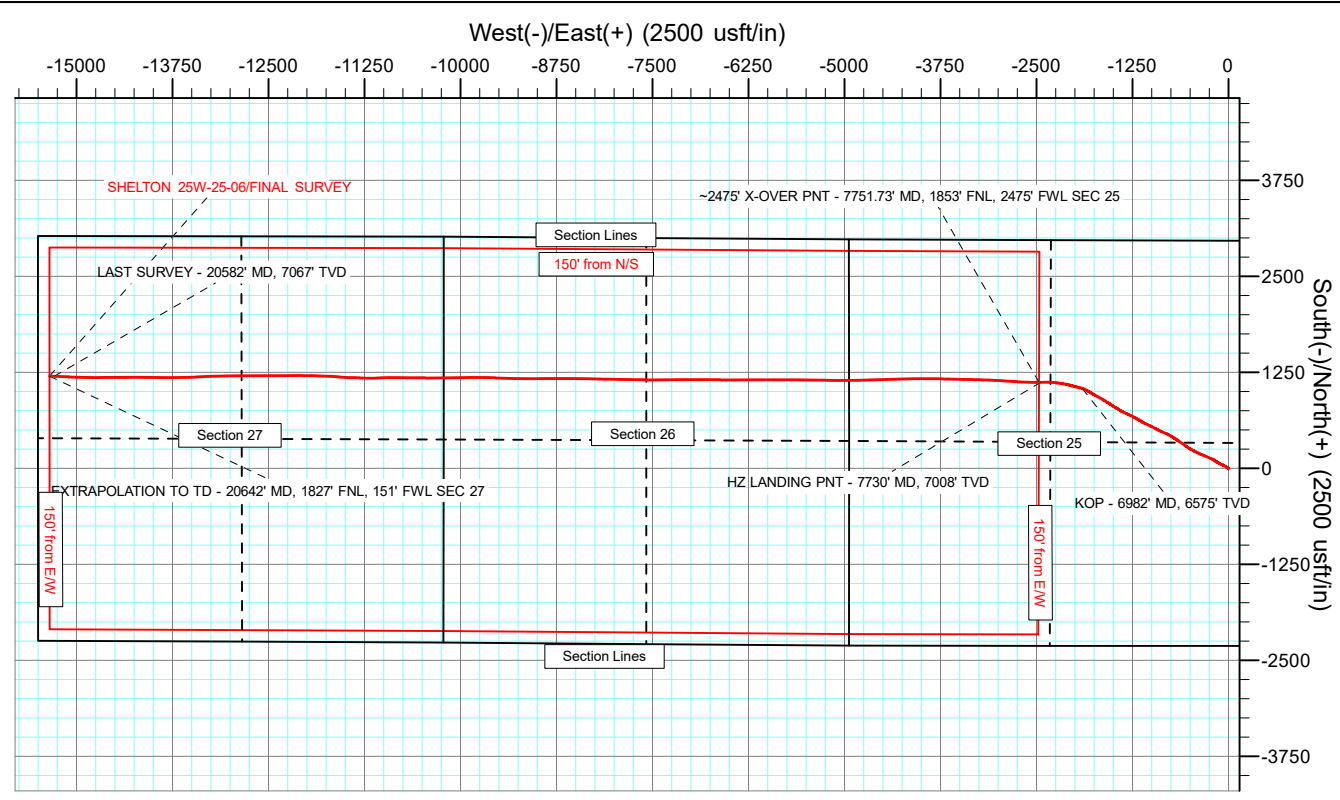
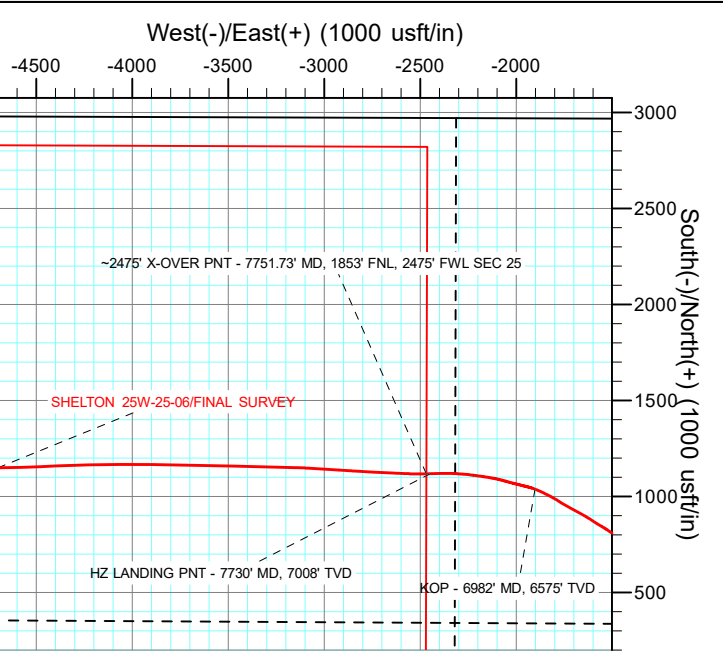
Azimuths to True North  
Magnetic North: 7.62°  
Magnetic Field  
Strength: 51773.5enT  
Dip Angle: 66.53°  
Date: 9/26/2022  
Model: IGRF2020

WELL DETAILS: SHELTON 25W-25-06

+N/-S	+E/-W	Northing	Easting	Latitude	Longitude	Slot
0.00	0.00	1346951.82	3250144.97	40.282311°N	104.603388°W	

ANNOTATIONS

MD	Inc	Azi	TVD	+N/-S	+E/-W	Vsect	Departure	Annotation
6982.00	18.43	290.44	6574.74	1038.61	-1901.48	1976.77	2184.22	KOP - 6982' MD, 6575' TVD
7730.00	87.35	268.90	7008.02	1119.35	-2445.41	2525.35	2737.28	HZ LANDING PNT - 7730' MD, 7008' TVD
7751.73	88.84	269.01	7008.74	1118.95	-2467.13	2546.96	2758.97	~2475' X-OVER PNT - 7751.73' MD, 1853' FNL, 2475' FWL SEC 25
20582.00	92.55	272.63	7066.89	1199.45	-15290.47	15337.45	15586.36	LAST SURVEY - 20582' MD, 7067' TVD
20642.00	92.55	272.63	7064.23	1202.20	-15350.35	15397.36	15646.30	EXTRAPOLATION TO TD - 20642' MD, 1827' FNL, 151' FWL SEC 27



AS DRILLED LOCAL COORDINATES  
SHL:  
2312' FSL, 302' FEL  
Sec 25-T4N-R65W  
150' TPZ -SETBACK:  
1853' FNL, 2475' FWL  
Sec 25-T4N-R65W  
150' BHL-SETBACK:  
1827' FNL, 151' FWL  
Sec 27-T4N-R65W

## Survey Report

<b>Company:</b>	CRESTONE PEAK RESOURCES	<b>Local Co-ordinate Reference:</b>	Well SHELTON 25W-25-06
<b>Project:</b>	WELD COUNTY	<b>TVD Reference:</b>	KB 25' @ 4861.00usft
<b>Site:</b>	SEC 25-T4N-R65W	<b>MD Reference:</b>	KB 25' @ 4861.00usft
<b>Well:</b>	SHELTON 25W-25-06	<b>North Reference:</b>	True
<b>Wellbore:</b>	OWB	<b>Survey Calculation Method:</b>	Minimum Curvature
<b>Design:</b>	FINAL SURVEY	<b>Database:</b>	EDT_32Bit_ODBC

<b>Project</b>	WELD COUNTY		
<b>Map System:</b>	US State Plane 1983	<b>System Datum:</b>	Mean Sea Level
<b>Geo Datum:</b>	North American Datum 1983		
<b>Map Zone:</b>	Colorado Northern Zone		Using geodetic scale factor

Site		SEC 25-T4N-R65W					
Site Position:		Northing:	1,344,643.82	usft	Latitude:	40.275967°N	
From:	Lat/Long	Easting:	3,250,457.11	usft	Longitude:	104.602353°W	
Position Uncertainty:	0.00	usft	Slot Radius:	13.200	in	Grid Convergence:	0.58 °

Well	SHELTON 25W-25-06					
Well Position	+N/-S	0.00 usft	Northing:	1,346,951.82 usft	Latitude:	40.282311°N
	+E/-W	0.00 usft	Easting:	3,250,144.97 usft	Longitude:	104.603388°W
Position Uncertainty		0.00 usft	Wellhead Elevation:	usft	Ground Level:	4,836.00 usft

<b>Wellbore</b>	OWB				
<b>Magnetics</b>	<b>Model Name</b>	<b>Sample Date</b>	<b>Declination (°)</b>	<b>Dip Angle (°)</b>	<b>Field Strength (nT)</b>
	IGRF2020	9/26/2022	7.62	66.53	51,773.54973872

<b>Design</b>	FINAL SURVEY				
<b>Audit Notes:</b>					
<b>Version:</b>	1.0	<b>Phase:</b>	ACTUAL	<b>Tie On Depth:</b>	0.00
<b>Vertical Section:</b>	<b>Depth From (TVD) (usft)</b>	<b>+N/-S (usft)</b>	<b>+E/-W (usft)</b>	<b>Direction (°)</b>	
	0.00	0.00	0.00	274.48	

<b>Survey Program</b>	<b>Date</b>	2/27/2023			
<b>From (usft)</b>	<b>To (usft)</b>	<b>Survey (Wellbore)</b>	<b>Tool Name</b>	<b>Description</b>	
152.00	1,859.00	SURFACE (OWB)	MWD OWSG	OWSG MWD - Standard	
2,059.00	20,642.00	FINAL SURVEY (OWB)	MWD OWSG	OWSG MWD - Standard	

<b>Survey</b>										
<b>Measured Depth (usft)</b>	<b>Inclination (°)</b>	<b>Azimuth (°)</b>	<b>Vertical Depth (usft)</b>	<b>+N/-S (usft)</b>	<b>+E/-W (usft)</b>	<b>Vertical Section (usft)</b>	<b>Dogleg Rate (°/100ft)</b>	<b>Build Rate (°/100ft)</b>	<b>Turn Rate (°/100ft)</b>	
0.00	0.00	0.00	0.00	0.00	0.00	0.00	0.00	0.00	0.00	
152.00	1.45	190.67	151.98	-1.89	-0.36	0.21	0.95	0.95	0.00	
243.00	1.00	166.10	242.96	-3.79	-0.38	0.08	0.75	-0.49	-27.00	
335.00	0.30	118.10	334.96	-4.69	0.03	-0.39	0.90	-0.76	-52.17	
427.00	0.60	69.80	426.95	-4.63	0.69	-1.05	0.50	0.33	-52.50	
517.00	0.70	74.90	516.95	-4.33	1.66	-2.00	0.13	0.11	5.67	
606.00	0.60	26.00	605.94	-3.77	2.39	-2.68	0.61	-0.11	-54.94	
698.00	2.20	323.20	697.92	-1.92	1.55	-1.69	2.17	1.74	-68.26	
787.00	4.00	313.50	786.78	1.59	-1.73	1.85	2.10	2.02	-10.90	
878.00	6.20	302.40	877.42	6.40	-8.18	8.66	2.64	2.42	-12.20	

## Survey Report

<b>Company:</b>	CRESTONE PEAK RESOURCES	<b>Local Co-ordinate Reference:</b>	Well SHELTON 25W-25-06
<b>Project:</b>	WELD COUNTY	<b>TVD Reference:</b>	KB 25' @ 4861.00usft
<b>Site:</b>	SEC 25-T4N-R65W	<b>MD Reference:</b>	KB 25' @ 4861.00usft
<b>Well:</b>	SHELTON 25W-25-06	<b>North Reference:</b>	True
<b>Wellbore:</b>	OWB	<b>Survey Calculation Method:</b>	Minimum Curvature
<b>Design:</b>	FINAL SURVEY	<b>Database:</b>	EDT_32Bit_ODBC

Survey									
Measured Depth (usft)	Inclination (°)	Azimuth (°)	Vertical Depth (usft)	+N/-S (usft)	+E/-W (usft)	Vertical Section (usft)	Dogleg Rate (°/100ft)	Build Rate (°/100ft)	Turn Rate (°/100ft)
970.00	9.00	299.70	968.60	12.63	-18.63	19.56	3.07	3.04	-2.93
1,060.00	11.60	300.50	1,057.14	20.71	-32.54	34.06	2.89	2.89	0.89
1,150.00	13.80	300.40	1,144.94	30.74	-49.60	51.85	2.44	2.44	-0.11
1,242.00	14.30	296.30	1,234.19	41.33	-69.25	72.26	1.21	0.54	-4.46
1,332.00	13.10	292.90	1,321.63	50.22	-88.61	92.26	1.61	-1.33	-3.78
1,422.00	13.80	294.20	1,409.16	58.59	-107.80	112.04	0.85	0.78	1.44
1,512.00	16.20	300.40	1,496.09	69.35	-128.42	133.44	3.20	2.67	6.89
1,602.00	17.90	302.40	1,582.13	83.11	-150.93	156.96	2.00	1.89	2.22
1,694.00	21.10	302.90	1,668.84	99.69	-176.78	184.02	3.48	3.48	0.54
1,786.00	22.10	297.20	1,754.39	116.59	-206.08	214.55	2.53	1.09	-6.20
1,859.00	24.00	294.70	1,821.56	129.08	-231.78	241.15	2.93	2.60	-3.42
2,059.00	23.36	291.87	2,004.73	160.84	-305.53	317.16	0.65	-0.32	-1.41
2,154.00	22.18	290.77	2,092.32	174.22	-339.78	352.35	1.32	-1.24	-1.16
2,249.00	22.71	296.87	2,180.14	188.87	-372.91	386.52	2.51	0.56	6.42
2,344.00	20.96	295.49	2,268.32	204.47	-404.61	419.34	1.92	-1.84	-1.45
2,439.00	21.61	297.64	2,356.84	219.90	-435.44	451.28	1.07	0.68	2.26
2,534.00	19.11	295.81	2,445.90	234.79	-464.95	481.86	2.72	-2.63	-1.93
2,627.00	20.89	299.72	2,533.29	249.64	-493.05	511.04	2.39	1.91	4.20
2,722.00	22.27	304.57	2,621.64	268.25	-522.59	541.94	2.37	1.45	5.11
2,817.00	24.92	305.19	2,708.69	290.00	-553.77	574.73	2.80	2.79	0.65
2,913.00	24.58	304.95	2,795.87	313.10	-586.67	609.32	0.37	-0.35	-0.25
3,007.00	23.99	303.98	2,881.55	334.98	-618.54	642.81	0.76	-0.63	-1.03
3,102.00	23.37	303.87	2,968.55	356.27	-650.20	676.03	0.65	-0.65	-0.12
3,198.00	20.35	302.74	3,057.64	375.91	-680.06	707.33	3.18	-3.15	-1.18
3,293.00	22.44	303.75	3,146.09	394.92	-709.03	737.70	2.23	2.20	1.06
3,482.00	19.58	299.68	3,322.51	430.65	-766.55	797.84	1.70	-1.51	-2.15
3,578.00	19.81	296.26	3,412.90	445.82	-795.12	827.50	1.22	0.24	-3.56
3,673.00	20.29	292.11	3,502.15	459.14	-824.81	858.14	1.58	0.51	-4.37
3,792.00	19.92	291.05	3,613.90	474.19	-862.85	897.24	0.44	-0.31	-0.89
3,887.00	19.94	296.73	3,703.22	487.29	-892.42	927.75	2.04	0.02	5.98
3,983.00	21.25	299.29	3,793.08	503.16	-922.22	958.69	1.66	1.36	2.67
4,078.00	24.95	297.10	3,880.45	520.72	-955.08	992.82	4.00	3.89	-2.31
4,172.00	24.73	296.46	3,965.75	538.51	-990.33	1,029.36	0.37	-0.23	-0.68
4,268.00	23.02	295.53	4,053.54	555.55	-1,025.25	1,065.50	1.82	-1.78	-0.97
4,458.00	21.50	295.10	4,229.37	586.33	-1,090.31	1,132.76	0.80	-0.80	-0.23
4,552.00	22.44	300.87	4,316.55	602.85	-1,121.31	1,164.96	2.50	1.00	6.14
4,647.00	19.42	300.12	4,405.28	620.08	-1,150.54	1,195.44	3.19	-3.18	-0.79
4,837.00	24.20	300.27	4,581.62	655.58	-1,211.53	1,259.02	2.52	2.52	0.08
4,932.00	20.62	296.65	4,669.44	672.91	-1,243.31	1,292.05	4.04	-3.77	-3.81
5,028.00	19.94	294.67	4,759.49	687.32	-1,273.30	1,323.07	1.01	-0.71	-2.06
5,123.00	20.66	297.05	4,848.59	701.70	-1,302.94	1,353.75	1.15	0.76	2.51
5,217.00	21.73	293.57	4,936.23	716.20	-1,333.66	1,385.51	1.76	1.14	-3.70
5,311.00	22.46	294.31	5,023.33	730.55	-1,365.98	1,418.85	0.83	0.78	0.79

# Survey Report

<b>Company:</b>	CRESTONE PEAK RESOURCES	<b>Local Co-ordinate Reference:</b>	Well SHELTON 25W-25-06
<b>Project:</b>	WELD COUNTY	<b>TVD Reference:</b>	KB 25' @ 4861.00usft
<b>Site:</b>	SEC 25-T4N-R65W	<b>MD Reference:</b>	KB 25' @ 4861.00usft
<b>Well:</b>	SHELTON 25W-25-06	<b>North Reference:</b>	True
<b>Wellbore:</b>	OWB	<b>Survey Calculation Method:</b>	Minimum Curvature
<b>Design:</b>	FINAL SURVEY	<b>Database:</b>	EDT_32Bit_ODBC

Survey										
Measured Depth (usft)	Inclination (°)	Azimuth (°)	Vertical Depth (usft)	+N/-S (usft)	+E/-W (usft)	Vertical Section (usft)	Dogleg Rate (°/100ft)	Build Rate (°/100ft)	Turn Rate (°/100ft)	
5,406.00	24.70	300.16	5,110.40	748.00	-1,399.68	1,453.81	3.41	2.36	6.16	
5,501.00	24.75	303.72	5,196.70	769.02	-1,433.39	1,489.06	1.57	0.05	3.75	
5,597.00	21.51	299.08	5,284.98	788.73	-1,465.50	1,522.60	3.87	-3.37	-4.83	
5,691.00	21.94	302.76	5,372.31	806.61	-1,495.33	1,553.74	1.52	0.46	3.91	
5,786.00	24.13	303.88	5,459.73	827.04	-1,526.38	1,586.29	2.35	2.31	1.18	
5,881.00	21.21	299.87	5,547.38	846.43	-1,557.41	1,618.74	3.48	-3.07	-4.22	
5,975.00	22.29	302.28	5,634.69	864.42	-1,587.23	1,649.87	1.49	1.15	2.56	
6,070.00	22.52	303.22	5,722.52	884.01	-1,617.68	1,681.76	0.45	0.24	0.99	
6,164.00	22.18	299.27	5,809.46	902.55	-1,648.22	1,713.65	1.64	-0.36	-4.20	
6,259.00	21.66	298.90	5,897.60	919.79	-1,679.21	1,745.90	0.57	-0.55	-0.39	
6,354.00	22.58	297.75	5,985.60	936.75	-1,710.70	1,778.62	1.07	0.97	-1.21	
6,449.00	23.03	300.04	6,073.18	954.55	-1,742.93	1,812.14	1.05	0.47	2.41	
6,543.00	21.53	302.63	6,160.16	973.06	-1,773.37	1,843.93	1.91	-1.60	2.76	
6,732.00	19.12	296.89	6,337.40	1,005.76	-1,830.20	1,903.14	1.65	-1.28	-3.04	
6,827.00	18.00	296.53	6,427.45	1,019.36	-1,857.21	1,931.13	1.19	-1.18	-0.38	
6,922.00	18.15	292.86	6,517.77	1,031.66	-1,883.98	1,958.78	1.21	0.16	-3.86	
6,982.00	18.43	290.44	6,574.74	1,038.61	-1,901.48	1,976.77	1.35	0.47	-4.03	
KOP - 6982' MD, 6575' TVD										
7,017.00	18.61	289.07	6,607.93	1,042.36	-1,911.94	1,987.49	1.35	0.51	-3.93	
7,112.00	28.13	283.83	6,695.04	1,052.69	-1,948.10	2,024.35	10.25	10.02	-5.52	
7,207.00	38.28	283.94	6,774.43	1,065.17	-1,998.54	2,075.60	10.68	10.68	0.12	
7,301.00	50.35	285.98	6,841.56	1,082.21	-2,061.82	2,140.03	12.93	12.84	2.17	
7,396.00	56.89	279.10	6,897.92	1,098.60	-2,136.41	2,215.66	9.02	6.88	-7.24	
7,491.00	62.33	277.83	6,945.97	1,110.64	-2,217.43	2,297.38	5.84	5.73	-1.34	
7,585.00	70.69	273.36	6,983.42	1,118.92	-2,303.14	2,383.47	9.90	8.89	-4.76	
7,679.00	83.84	268.65	7,004.10	1,120.43	-2,394.59	2,474.76	14.81	13.99	-5.01	
7,730.00	87.35	268.90	7,008.02	1,119.35	-2,445.41	2,525.35	6.89	6.87	0.50	
HZ LANDING PNT - 7730' MD, 7008' TVD										
7,751.73	88.84	269.01	7,008.75	1,118.95	-2,467.13	2,546.96	6.89	6.87	0.49	
~2475' X-OVER PNT - 7751.73' MD, 1853' FNL, 2475' FWL SEC 25										
7,774.00	90.37	269.12	7,008.90	1,118.59	-2,489.39	2,569.13	6.89	6.87	0.49	
7,869.00	91.33	272.56	7,007.49	1,119.98	-2,584.36	2,663.91	3.76	1.01	3.62	
7,964.00	92.89	272.69	7,003.99	1,124.33	-2,679.19	2,758.80	1.65	1.64	0.14	
8,058.00	90.92	273.12	7,000.87	1,129.09	-2,773.01	2,852.71	2.15	-2.10	0.46	
8,153.00	90.02	273.65	7,000.09	1,134.70	-2,867.84	2,947.68	1.10	-0.95	0.56	
8,248.00	89.95	273.68	7,000.11	1,140.77	-2,962.65	3,042.67	0.08	-0.07	0.03	
8,342.00	90.41	273.51	6,999.82	1,146.66	-3,056.46	3,136.66	0.52	0.49	-0.18	
8,436.00	87.61	271.63	7,001.44	1,150.88	-3,150.34	3,230.58	3.59	-2.98	-2.00	
8,532.00	87.15	270.95	7,005.83	1,153.04	-3,246.22	3,326.33	0.85	-0.48	-0.71	
8,627.00	88.94	271.59	7,009.07	1,155.14	-3,341.13	3,421.12	2.00	1.88	0.67	
8,722.00	88.70	271.25	7,011.03	1,157.49	-3,436.08	3,515.97	0.44	-0.25	-0.36	
8,817.00	88.62	271.64	7,013.25	1,159.89	-3,531.03	3,610.81	0.42	-0.08	0.41	
8,912.00	89.26	271.24	7,015.01	1,162.28	-3,625.98	3,705.66	0.79	0.67	-0.42	
9,006.00	89.79	271.57	7,015.79	1,164.58	-3,719.95	3,799.52	0.66	0.56	0.35	

## Survey Report

<b>Company:</b>	CRESTONE PEAK RESOURCES	<b>Local Co-ordinate Reference:</b>	Well SHELTON 25W-25-06
<b>Project:</b>	WELD COUNTY	<b>TVD Reference:</b>	KB 25' @ 4861.00usft
<b>Site:</b>	SEC 25-T4N-R65W	<b>MD Reference:</b>	KB 25' @ 4861.00usft
<b>Well:</b>	SHELTON 25W-25-06	<b>North Reference:</b>	True
<b>Wellbore:</b>	OWB	<b>Survey Calculation Method:</b>	Minimum Curvature
<b>Design:</b>	FINAL SURVEY	<b>Database:</b>	EDT_32Bit_ODBC

Survey									
Measured Depth (usft)	Inclination (°)	Azimuth (°)	Vertical Depth (usft)	+N/-S (usft)	+E/-W (usft)	Vertical Section (usft)	Dogleg Rate (°/100ft)	Build Rate (°/100ft)	Turn Rate (°/100ft)
9,101.00	89.80	270.53	7,016.12	1,166.32	-3,814.93	3,894.35	1.09	0.01	-1.09
9,196.00	90.15	269.97	7,016.17	1,166.74	-3,909.93	3,989.09	0.70	0.37	-0.59
9,291.00	89.95	270.01	7,016.08	1,166.72	-4,004.93	4,083.80	0.21	-0.21	0.04
9,385.00	89.72	269.80	7,016.35	1,166.56	-4,098.93	4,177.50	0.33	-0.24	-0.22
9,480.00	89.37	268.76	7,017.11	1,165.37	-4,193.92	4,272.10	1.16	-0.37	-1.09
9,575.00	88.63	267.88	7,018.77	1,162.59	-4,288.86	4,366.54	1.21	-0.78	-0.93
9,670.00	88.69	268.02	7,020.99	1,159.19	-4,383.77	4,460.90	0.16	0.06	0.15
9,765.00	88.73	267.11	7,023.13	1,155.15	-4,478.66	4,555.18	0.96	0.04	-0.96
9,860.00	90.37	269.13	7,023.87	1,152.04	-4,573.60	4,649.59	2.74	1.73	2.13
9,954.00	89.18	269.16	7,024.24	1,150.64	-4,667.59	4,743.18	1.27	-1.27	0.03
10,144.00	89.66	268.50	7,026.17	1,146.76	-4,857.54	4,932.24	0.43	0.25	-0.35
10,239.00	90.05	267.72	7,026.41	1,143.62	-4,952.48	5,026.66	0.92	0.41	-0.82
10,334.00	89.76	271.71	7,026.56	1,143.15	-5,047.46	5,121.31	4.21	-0.31	4.20
10,428.00	89.08	271.32	7,027.52	1,145.64	-5,141.42	5,215.18	0.83	-0.72	-0.41
10,523.00	88.18	270.70	7,029.79	1,147.31	-5,236.38	5,309.97	1.15	-0.95	-0.65
10,617.00	87.83	270.57	7,033.06	1,148.35	-5,330.32	5,403.71	0.40	-0.37	-0.14
10,712.00	88.74	270.84	7,035.90	1,149.52	-5,425.27	5,498.46	1.00	0.96	0.28
10,806.00	88.20	270.69	7,038.41	1,150.77	-5,519.22	5,592.23	0.60	-0.57	-0.16
10,901.00	89.82	271.07	7,040.05	1,152.23	-5,614.20	5,687.02	1.75	1.71	0.40
10,997.00	89.42	271.01	7,040.69	1,153.97	-5,710.18	5,782.85	0.42	-0.42	-0.06
11,092.00	89.70	269.89	7,041.42	1,154.72	-5,805.17	5,877.61	1.22	0.29	-1.18
11,186.00	89.98	269.71	7,041.68	1,154.39	-5,899.17	5,971.29	0.35	0.30	-0.19
11,281.00	89.96	269.07	7,041.73	1,153.38	-5,994.16	6,065.92	0.67	-0.02	-0.67
11,376.00	91.38	269.39	7,040.62	1,152.10	-6,089.15	6,160.51	1.53	1.49	0.34
11,470.00	91.78	269.38	7,038.03	1,151.10	-6,183.10	6,254.10	0.43	0.43	-0.01
11,565.00	90.95	270.26	7,035.77	1,150.80	-6,278.08	6,348.76	1.27	-0.87	0.93
11,660.00	90.37	269.93	7,034.67	1,150.96	-6,373.07	6,443.48	0.70	-0.61	-0.35
11,755.00	89.55	269.57	7,034.74	1,150.54	-6,468.07	6,538.15	0.94	-0.86	-0.38
11,851.00	90.79	271.44	7,034.45	1,151.39	-6,564.06	6,633.92	2.34	1.29	1.95
11,945.00	89.92	270.92	7,033.87	1,153.32	-6,658.03	6,727.76	1.08	-0.93	-0.55
12,040.00	90.20	270.39	7,033.77	1,154.41	-6,753.03	6,822.55	0.63	0.29	-0.56
12,135.00	89.66	269.52	7,033.89	1,154.33	-6,848.03	6,917.25	1.08	-0.57	-0.92
12,230.00	90.31	270.31	7,033.91	1,154.19	-6,943.02	7,011.95	1.08	0.68	0.83
12,326.00	89.31	268.95	7,034.23	1,153.57	-7,039.02	7,107.60	1.76	-1.04	-1.42
12,421.00	90.33	271.06	7,034.53	1,153.58	-7,134.01	7,202.30	2.47	1.07	2.22
12,612.00	88.31	268.57	7,036.80	1,152.97	-7,324.97	7,392.63	1.68	-1.06	-1.30
12,707.00	90.34	270.02	7,037.92	1,151.80	-7,419.95	7,487.23	2.63	2.14	1.53
12,802.00	90.29	269.84	7,037.39	1,151.68	-7,514.95	7,581.93	0.20	-0.05	-0.19
12,897.00	90.01	271.48	7,037.14	1,152.78	-7,609.94	7,676.71	1.75	-0.29	1.73
12,992.00	89.27	270.65	7,037.74	1,154.54	-7,704.92	7,771.54	1.17	-0.78	-0.87
13,087.00	88.56	270.23	7,039.54	1,155.27	-7,799.90	7,866.29	0.87	-0.75	-0.44
13,182.00	89.98	271.68	7,040.75	1,156.85	-7,894.87	7,961.10	2.14	1.49	1.53
13,278.00	89.55	271.35	7,041.14	1,159.39	-7,990.84	8,056.97	0.56	-0.45	-0.34

## Survey Report

<b>Company:</b>	CRESTONE PEAK RESOURCES	<b>Local Co-ordinate Reference:</b>	Well SHELTON 25W-25-06
<b>Project:</b>	WELD COUNTY	<b>TVD Reference:</b>	KB 25' @ 4861.00usft
<b>Site:</b>	SEC 25-T4N-R65W	<b>MD Reference:</b>	KB 25' @ 4861.00usft
<b>Well:</b>	SHELTON 25W-25-06	<b>North Reference:</b>	True
<b>Wellbore:</b>	OWB	<b>Survey Calculation Method:</b>	Minimum Curvature
<b>Design:</b>	FINAL SURVEY	<b>Database:</b>	EDT_32Bit_ODBC

Survey										
Measured Depth (usft)	Inclination (°)	Azimuth (°)	Vertical Depth (usft)	+N/-S (usft)	+E/-W (usft)	Vertical Section (usft)	Dogleg Rate (°/100ft)	Build Rate (°/100ft)	Turn Rate (°/100ft)	
13,468.00	90.15	271.22	7,041.64	1,163.65	-8,180.79	8,246.67	0.32	0.32	-0.07	
13,563.00	90.58	270.69	7,041.04	1,165.24	-8,275.77	8,341.49	0.72	0.45	-0.56	
13,658.00	90.91	269.98	7,039.80	1,165.79	-8,370.76	8,436.23	0.82	0.35	-0.75	
13,754.00	88.33	271.08	7,040.44	1,166.68	-8,466.75	8,531.99	2.92	-2.69	1.15	
13,849.00	88.36	270.51	7,043.18	1,168.00	-8,561.70	8,626.76	0.60	0.03	-0.60	
13,944.00	88.97	270.11	7,045.39	1,168.51	-8,656.67	8,721.48	0.77	0.64	-0.42	
14,134.00	88.02	269.85	7,050.38	1,168.44	-8,846.60	8,910.82	0.52	-0.50	-0.14	
14,229.00	87.27	269.20	7,054.29	1,167.66	-8,941.52	9,005.39	1.04	-0.79	-0.68	
14,323.00	86.75	269.20	7,059.19	1,166.35	-9,035.38	9,098.86	0.55	-0.55	0.00	
14,418.00	87.27	270.57	7,064.15	1,166.16	-9,130.25	9,193.43	1.54	0.55	1.44	
14,513.00	87.88	271.68	7,068.17	1,168.02	-9,225.14	9,288.18	1.33	0.64	1.17	
14,608.00	87.10	270.89	7,072.33	1,170.15	-9,320.03	9,382.94	1.17	-0.82	-0.83	
14,703.00	88.24	272.35	7,076.19	1,172.83	-9,414.90	9,477.74	1.95	1.20	1.54	
14,799.00	87.79	271.90	7,079.52	1,176.39	-9,510.78	9,573.60	0.66	-0.47	-0.47	
14,894.00	88.77	272.39	7,082.37	1,179.94	-9,605.67	9,668.47	1.15	1.03	0.52	
14,988.00	89.41	271.11	7,083.86	1,182.81	-9,699.61	9,762.35	1.52	0.68	-1.36	
15,083.00	90.03	269.71	7,084.32	1,183.49	-9,794.61	9,857.11	1.61	0.65	-1.47	
15,178.00	90.33	267.93	7,084.03	1,181.54	-9,889.58	9,951.64	1.90	0.32	-1.87	
15,273.00	89.71	269.81	7,083.99	1,179.66	-9,984.56	10,046.18	2.08	-0.65	1.98	
15,368.00	90.24	269.21	7,084.03	1,178.85	-10,079.55	10,140.83	0.84	0.56	-0.63	
15,463.00	88.99	270.40	7,084.67	1,178.53	-10,174.55	10,235.50	1.82	-1.32	1.25	
15,558.00	88.72	269.33	7,086.57	1,178.31	-10,269.53	10,330.18	1.16	-0.28	-1.13	
15,652.00	89.81	269.15	7,087.78	1,177.06	-10,363.51	10,423.77	1.18	1.16	-0.19	
15,747.00	89.11	271.40	7,088.67	1,177.51	-10,458.50	10,518.51	2.48	-0.74	2.37	
15,841.00	88.47	270.22	7,090.66	1,178.84	-10,552.46	10,612.29	1.43	-0.68	-1.26	
15,936.00	87.93	269.51	7,093.64	1,178.62	-10,647.42	10,706.94	0.94	-0.57	-0.75	
16,031.00	88.93	271.38	7,096.24	1,179.36	-10,742.37	10,801.66	2.23	1.05	1.97	
16,126.00	89.37	270.94	7,097.65	1,181.28	-10,837.34	10,896.49	0.65	0.46	-0.46	
16,221.00	90.21	269.52	7,098.00	1,181.66	-10,932.34	10,991.23	1.74	0.88	-1.49	
16,316.00	90.15	266.70	7,097.70	1,178.53	-11,027.28	11,085.63	2.97	-0.06	-2.97	
16,412.00	90.12	269.07	7,097.48	1,174.99	-11,123.20	11,180.99	2.47	-0.03	2.47	
16,506.00	89.60	270.56	7,097.71	1,174.68	-11,217.20	11,274.67	1.68	-0.55	1.59	
16,601.00	89.08	273.20	7,098.80	1,177.80	-11,312.13	11,369.56	2.83	-0.55	2.78	
16,697.00	89.60	270.31	7,099.91	1,180.74	-11,408.07	11,465.43	3.06	0.54	-3.01	
16,791.00	89.38	273.56	7,100.74	1,183.91	-11,502.00	11,559.33	3.47	-0.23	3.46	
16,886.00	90.69	275.30	7,100.69	1,191.25	-11,596.71	11,654.32	2.29	1.38	1.83	
16,981.00	88.62	272.78	7,101.26	1,197.94	-11,691.46	11,749.30	3.43	-2.18	-2.65	
17,076.00	88.14	271.83	7,103.94	1,201.76	-11,786.34	11,844.20	1.12	-0.51	-1.00	
17,171.00	88.71	271.22	7,106.55	1,204.29	-11,881.27	11,939.03	0.88	0.60	-0.64	
17,266.00	89.65	271.22	7,107.91	1,206.31	-11,976.24	12,033.87	0.99	0.99	0.00	
17,361.00	89.20	270.38	7,108.87	1,207.64	-12,071.23	12,128.67	1.00	-0.47	-0.88	
17,456.00	88.99	270.15	7,110.37	1,208.08	-12,166.21	12,223.40	0.33	-0.22	-0.24	
17,551.00	89.52	269.38	7,111.60	1,207.69	-12,261.20	12,318.07	0.98	0.56	-0.81	

## Survey Report

<b>Company:</b>	CRESTONE PEAK RESOURCES	<b>Local Co-ordinate Reference:</b>	Well SHELTON 25W-25-06
<b>Project:</b>	WELD COUNTY	<b>TVD Reference:</b>	KB 25' @ 4861.00usft
<b>Site:</b>	SEC 25-T4N-R65W	<b>MD Reference:</b>	KB 25' @ 4861.00usft
<b>Well:</b>	SHELTON 25W-25-06	<b>North Reference:</b>	True
<b>Wellbore:</b>	OWB	<b>Survey Calculation Method:</b>	Minimum Curvature
<b>Design:</b>	FINAL SURVEY	<b>Database:</b>	EDT_32Bit_ODBC

Survey									
Measured Depth (usft)	Inclination (°)	Azimuth (°)	Vertical Depth (usft)	+N/-S (usft)	+E/-W (usft)	Vertical Section (usft)	Dogleg Rate (°/100ft)	Build Rate (°/100ft)	Turn Rate (°/100ft)
17,647.00	89.88	268.96	7,112.11	1,206.30	-12,357.19	12,413.65	0.58	0.37	-0.44
17,742.00	90.47	268.57	7,111.82	1,204.25	-12,452.17	12,508.18	0.74	0.62	-0.41
17,837.00	89.18	270.67	7,112.11	1,203.62	-12,547.16	12,602.83	2.59	-1.36	2.21
17,932.00	88.14	270.73	7,114.33	1,204.78	-12,642.13	12,697.60	1.10	-1.09	0.06
18,026.00	89.06	270.34	7,116.62	1,205.66	-12,736.09	12,791.35	1.06	0.98	-0.41
18,122.00	90.52	269.66	7,116.98	1,205.66	-12,832.09	12,887.05	1.68	1.52	-0.71
18,216.00	89.44	269.10	7,117.01	1,204.64	-12,926.08	12,980.68	1.29	-1.15	-0.60
18,311.00	90.34	270.06	7,117.19	1,203.94	-13,021.08	13,075.33	1.39	0.95	1.01
18,405.00	89.48	268.04	7,117.34	1,202.38	-13,115.06	13,168.90	2.34	-0.91	-2.15
18,500.00	90.75	266.95	7,117.15	1,198.23	-13,209.96	13,263.19	1.76	1.34	-1.15
18,595.00	90.28	267.30	7,116.29	1,193.47	-13,304.84	13,357.41	0.62	-0.49	0.37
18,689.00	90.74	268.84	7,115.46	1,190.30	-13,398.78	13,450.81	1.71	0.49	1.64
18,783.00	89.83	267.65	7,114.99	1,187.42	-13,492.73	13,544.25	1.59	-0.97	-1.27
18,879.00	91.37	269.42	7,113.98	1,184.97	-13,588.69	13,639.72	2.44	1.60	1.84
18,974.00	90.59	269.28	7,112.36	1,183.89	-13,683.67	13,734.33	0.83	-0.82	-0.15
19,069.00	91.98	269.88	7,110.23	1,183.19	-13,778.64	13,828.96	1.59	1.46	0.63
19,164.00	91.46	268.55	7,107.38	1,181.89	-13,873.58	13,923.51	1.50	-0.55	-1.40
19,258.00	92.86	271.08	7,103.83	1,181.59	-13,967.51	14,017.12	3.07	1.49	2.69
19,353.00	92.94	271.08	7,099.03	1,183.38	-14,062.37	14,111.83	0.08	0.08	0.00
19,448.00	91.81	270.71	7,095.09	1,184.86	-14,157.27	14,206.57	1.25	-1.19	-0.39
19,544.00	91.98	269.93	7,091.92	1,185.40	-14,253.22	14,302.26	0.83	0.18	-0.81
19,639.00	92.72	269.40	7,088.02	1,184.84	-14,348.14	14,396.84	0.96	0.78	-0.56
19,734.00	91.61	270.43	7,084.43	1,184.70	-14,443.06	14,491.47	1.59	-1.17	1.08
19,829.00	90.97	269.13	7,082.29	1,184.34	-14,538.04	14,586.13	1.52	-0.67	-1.37
19,924.00	91.86	268.77	7,079.95	1,182.60	-14,632.99	14,680.66	1.01	0.94	-0.38
20,020.00	90.78	270.83	7,077.74	1,182.26	-14,728.96	14,776.30	2.42	-1.12	2.15
20,115.00	90.74	269.64	7,076.48	1,182.65	-14,823.95	14,871.03	1.25	-0.04	-1.25
20,210.00	90.62	271.83	7,075.35	1,183.87	-14,918.93	14,965.82	2.31	-0.13	2.31
20,305.00	92.07	271.55	7,073.12	1,186.67	-15,013.86	15,060.68	1.55	1.53	-0.29
20,400.00	90.66	273.09	7,070.86	1,190.51	-15,108.75	15,155.58	2.20	-1.48	1.62
20,494.00	90.92	272.76	7,069.56	1,195.31	-15,202.62	15,249.53	0.45	0.28	-0.35
20,582.00	92.55	272.63	7,066.90	1,199.45	-15,290.48	15,337.45	1.86	1.85	-0.15
LAST SURVEY - 20582' MD, 7067' TVD									
20,642.00	92.55	272.63	7,064.23	1,202.20	-15,350.35	15,397.36	0.00	0.00	0.00
EXTRAPOLATION TO TD - 20642' MD, 1827' FNL, 151' FWL SEC 27									



## Survey Report

<b>Company:</b>	CRESTONE PEAK RESOURCES	<b>Local Co-ordinate Reference:</b>	Well SHELTON 25W-25-06
<b>Project:</b>	WELD COUNTY	<b>TVD Reference:</b>	KB 25' @ 4861.00usft
<b>Site:</b>	SEC 25-T4N-R65W	<b>MD Reference:</b>	KB 25' @ 4861.00usft
<b>Well:</b>	SHELTON 25W-25-06	<b>North Reference:</b>	True
<b>Wellbore:</b>	OWB	<b>Survey Calculation Method:</b>	Minimum Curvature
<b>Design:</b>	FINAL SURVEY	<b>Database:</b>	EDT_32Bit_ODBC

Design Targets									
Target Name - hit/miss target - Shape	Dip Angle (°)	Dip Dir. (°)	TVD (usft)	+N/-S (usft)	+E/-W (usft)	Northing (usft)	Easting (usft)	Latitude	Longitude
LP-SHELTON 25W-06 - actual wellpath misses target center by 38.12usft at 7750.77usft MD (7008.72 TVD, 1118.97 N, -2466.17 E) - Point	0.00	0.00	7,000.00	1,156.06	-2,467.13	1,348,082.83	3,247,666.38	40.285484°N	104.612231°W
PBHL-SHELTON 25W-0 - actual wellpath misses target center by 56.90usft at 20640.67usft MD (7064.28 TVD, 1202.14 N, -15349.03 E) - Point	0.00	0.00	7,120.00	1,213.53	-15,350.99	1,348,010.03	3,234,783.16	40.285629°N	104.658411°W

Design Annotations					
Measured Depth (usft)	Vertical Depth (usft)	Local Coordinates			
		+N/-S (usft)	+E/-W (usft)	Comment	
6,982.00	6,574.74	1,038.61	-1,901.48	KOP - 6982' MD, 6575' TVD	
7,730.00	7,008.02	1,119.35	-2,445.41	HZ LANDING PNT - 7730' MD, 7008' TVD	
7,751.73	7,008.75	1,118.95	-2,467.13	~2475' X-OVER PNT - 7751.73' MD, 1853' FNL, 2475' FWL SEC 25	
20,582.00	7,066.90	1,199.45	-15,290.48	LAST SURVEY - 20582' MD, 7067' TVD	
20,642.00	7,064.23	1,202.20	-15,350.35	EXTRAPOLATION TO TD - 20642' MD, 1827' FNL, 151' FWL SEC 27	

Checked By: _____	Approved By: _____	Date: _____
-------------------	--------------------	-------------