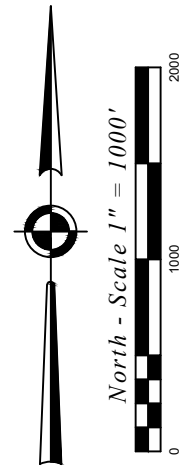
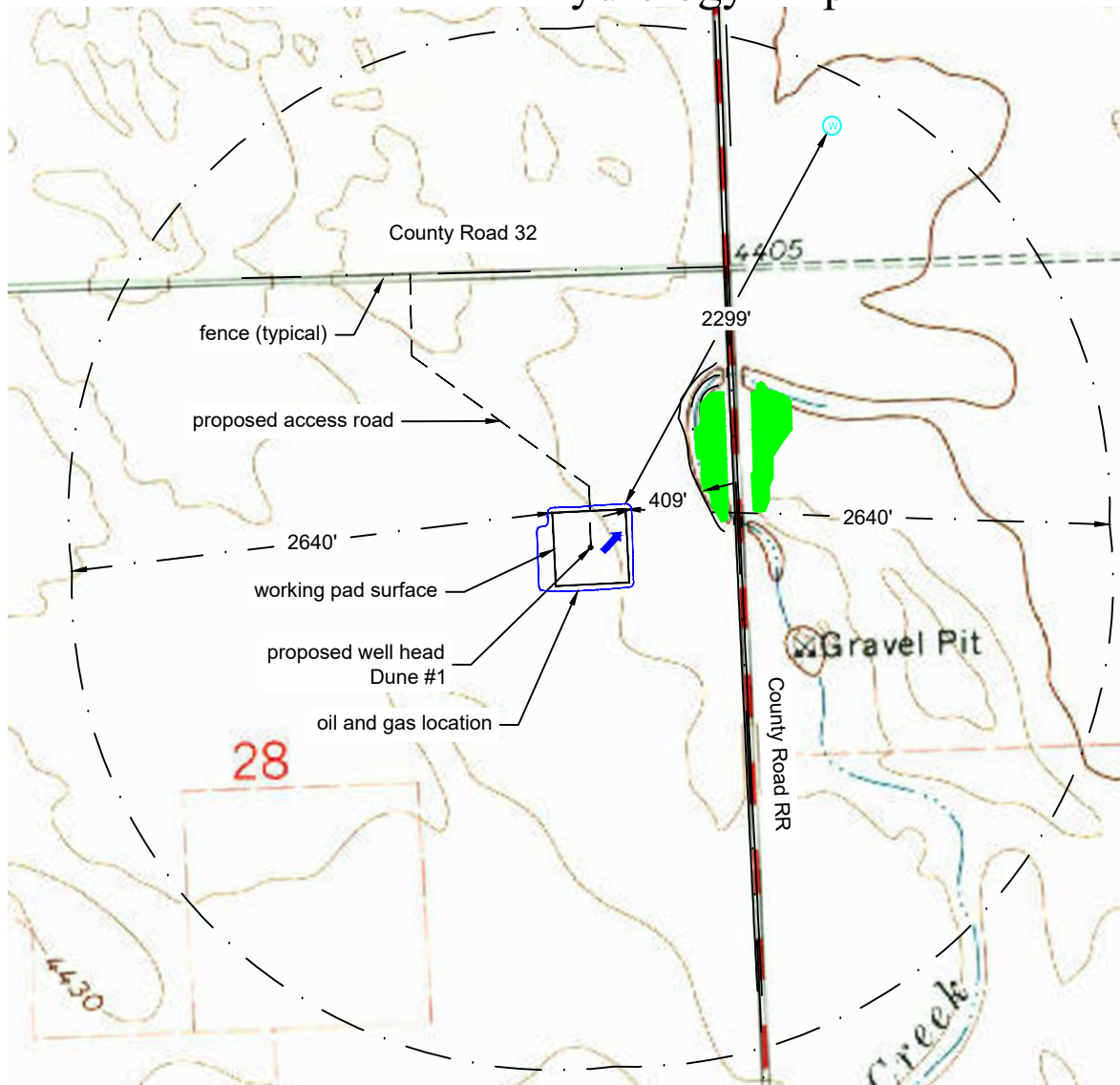


Hydrology Map



Legend:

- wetlands
- ➔ downgradient
- water well
- section line
- - - - - buffer zone
- - - - - edge dirt road
- - - - - access road
- working pad surface
- Oil and Gas Location

Groundwater and Water Well information:

Distance and direction from limits of disturbance.

Description:

water well Permit: #224484

Spring or Seep:

Distance:

2299' Northeast

5280' East

Surface Water and Wetlands:

Distance and direction to nearest downgradient surface waters from working pad.

- If less than 2,640 feet, is water identified within 15 miles upstream of Public Water System intake?

Distance and direction to nearest downgradient wetlands from working pad.

Direction Distance:
Northeast 409'

Northeast 409'

Is a U.S. Army of Engineers Section 404 permit required for the proposed Oil and Gas location, access road, or associated pipeline corridor.

No

Is location within a Floodplain.

-resource State

No

C:\Users\plsc\OneDrive\for Brett\21131\dwg\21131_R3_HYD.dwg January 24, 2023 - 8:01am

Well Name:	Dune #1	Field Date 11.11.2021	Prepared for:	Project#: 21131.001
		Party Chief BAB	St Croix Operating, LLC	
S28-T01N-R50W-6 PM		Survey Tech N/A		
Washington County, CO		Proj. Manager BAB		
			PLS Corporation 532 West 66th Street Loveland, Colorado 80538 970.669.2100 - info@plscorporation.com	