

Proposed well site photographs
St. Croix Operating, Inc.
well site **Dune #1**

SHL: NE-1/4 of NE-1/4 Section 28-T1S-R50W-6thPM
Washington County, Colorado



Dune #1 • North View



Dune #1 • South View



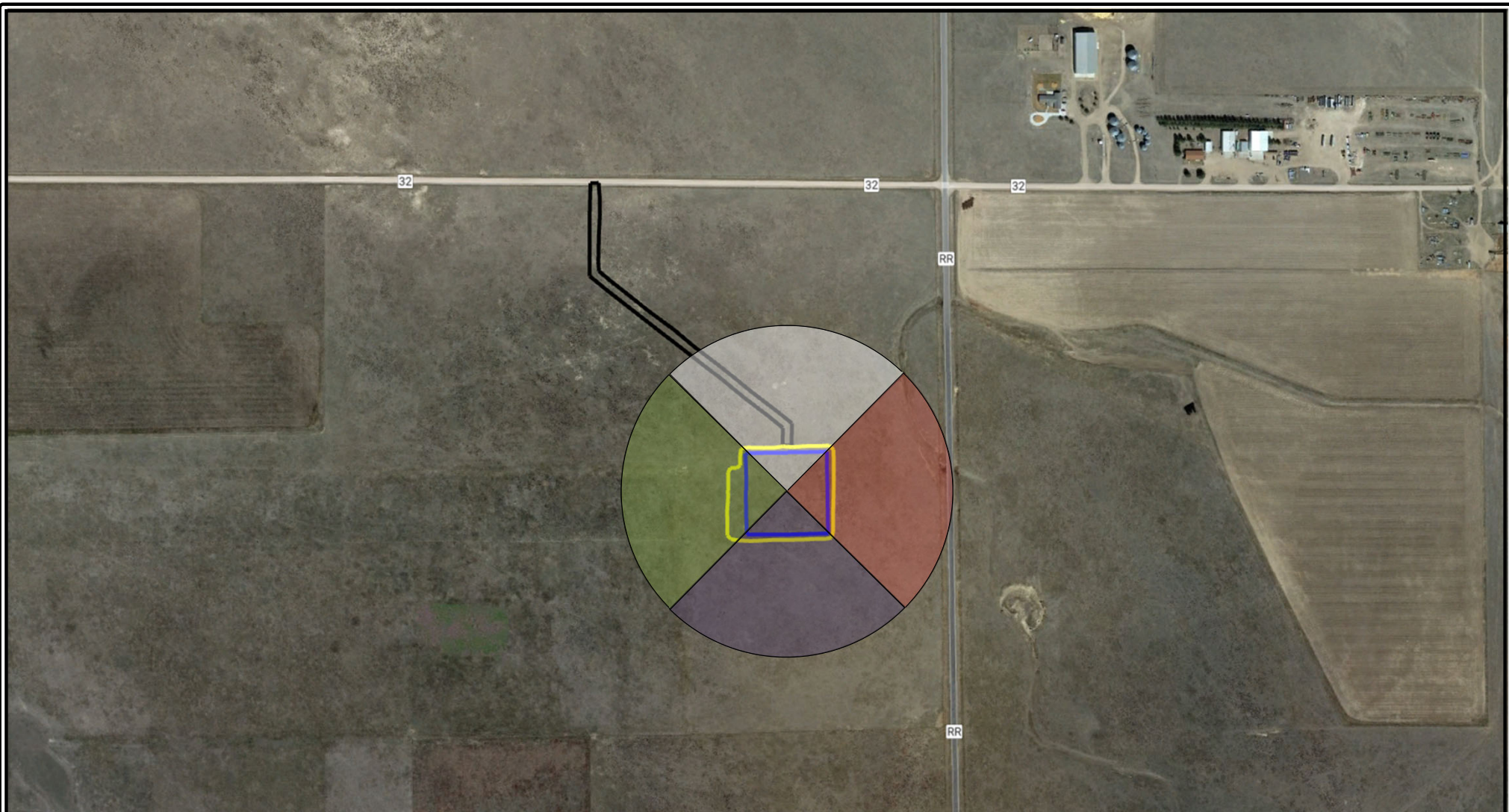
Dune #1 • East View



Dune #1 • West View

Prepared By:
PLS Corporation

1205 Des Moines Ave
Loveland • Colorado 80537
970.669.2100 office • info@plscorporation.com



Dune #1
St. Croix Operating, Inc.
SENW S28 T1N R50W
Location Pictures – Field of View

Legend



North View



South View



East View



West View



Working Pad Surface



Oil and Gas Location



Proposed Access Road



Prepared By:
Ardor Environmental LLC

August 22, 2022

Proposed well site photographs
St. Croix Operating, Inc.
well site **Dune #1**

SHL: NE-1/4 of NE-1/4 Section 28-T1S-R50W-6thPM
Washington County, Colorado



Dune #1 • North-East-South



Dune #1 • South-West-North

Prepared By:
PLS Corporation

532 West 66th Street
Loveland • Colorado 80538
970.669.2100 office • info@plscorporation.com

21131.001

Date of Photography: December 20, 2021