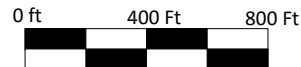


Dune #1
St. Croix Operating, Inc.
SENE S28 T1N R50W
NRCS Soils Map

Legend

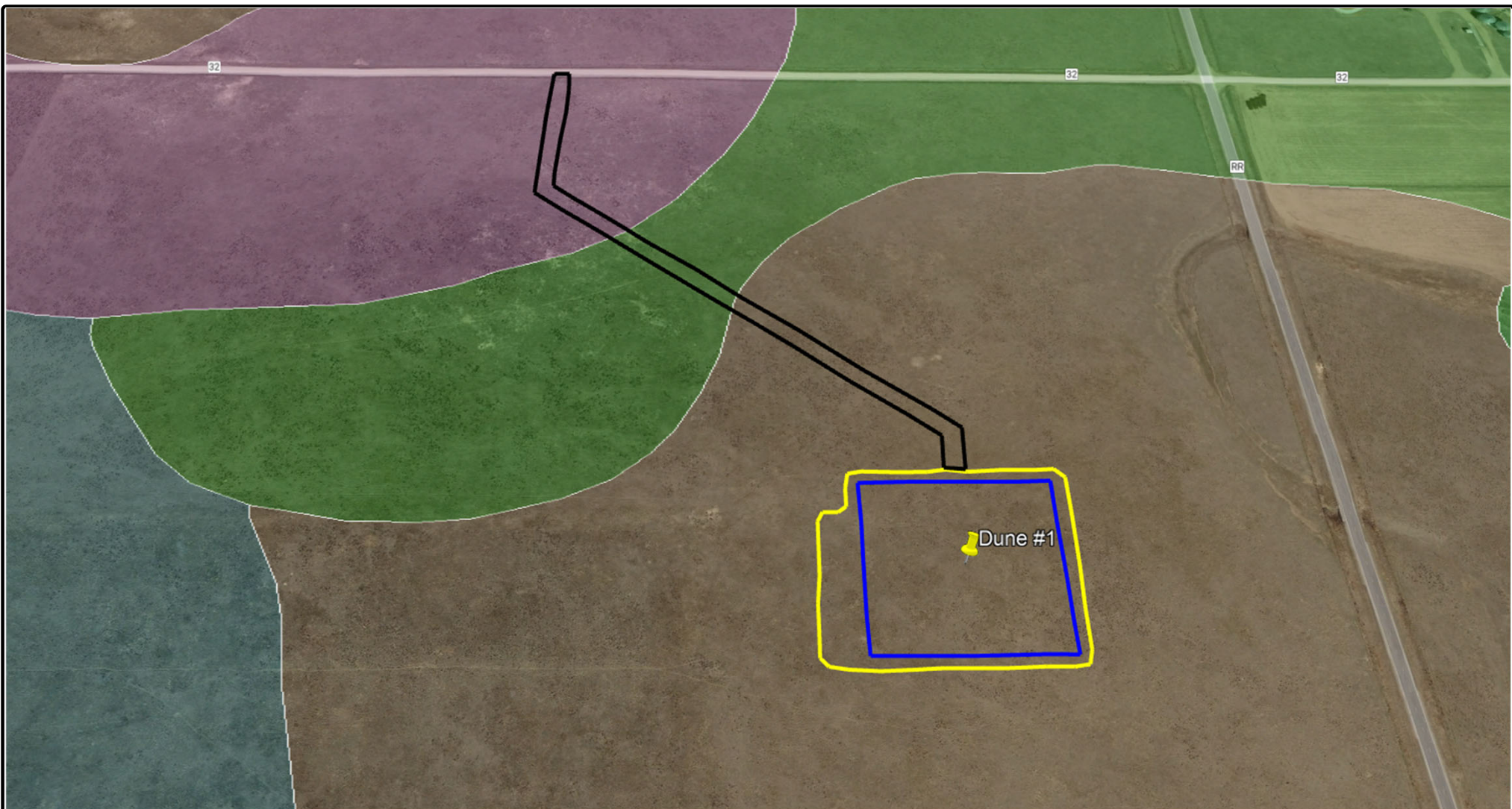
- 2 Ascalon loamy sand
- 30 Julesburg loamy sand
- 70 Valent sand

- Working Pad Surface
- Oil and Gas Location
- Proposed Access Road



Prepared By:
Ardor Environmental LLC




August 1, 2022

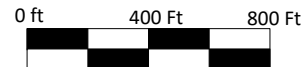


Dune #1
St. Croix Operating, Inc.
SENE S28 T1N R50W
NRCS Soils Map

Legend

- 2 Ascalon loamy sand
- 30 Julesburg loamy sand
- 70 Valent sand

-  Working Pad Surface
-  Oil and Gas Location
-  Proposed Access Road



Prepared By:
Ardor Environmental LLC

August 1, 2022