

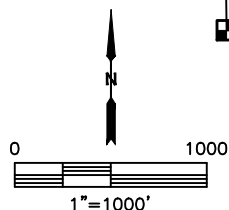
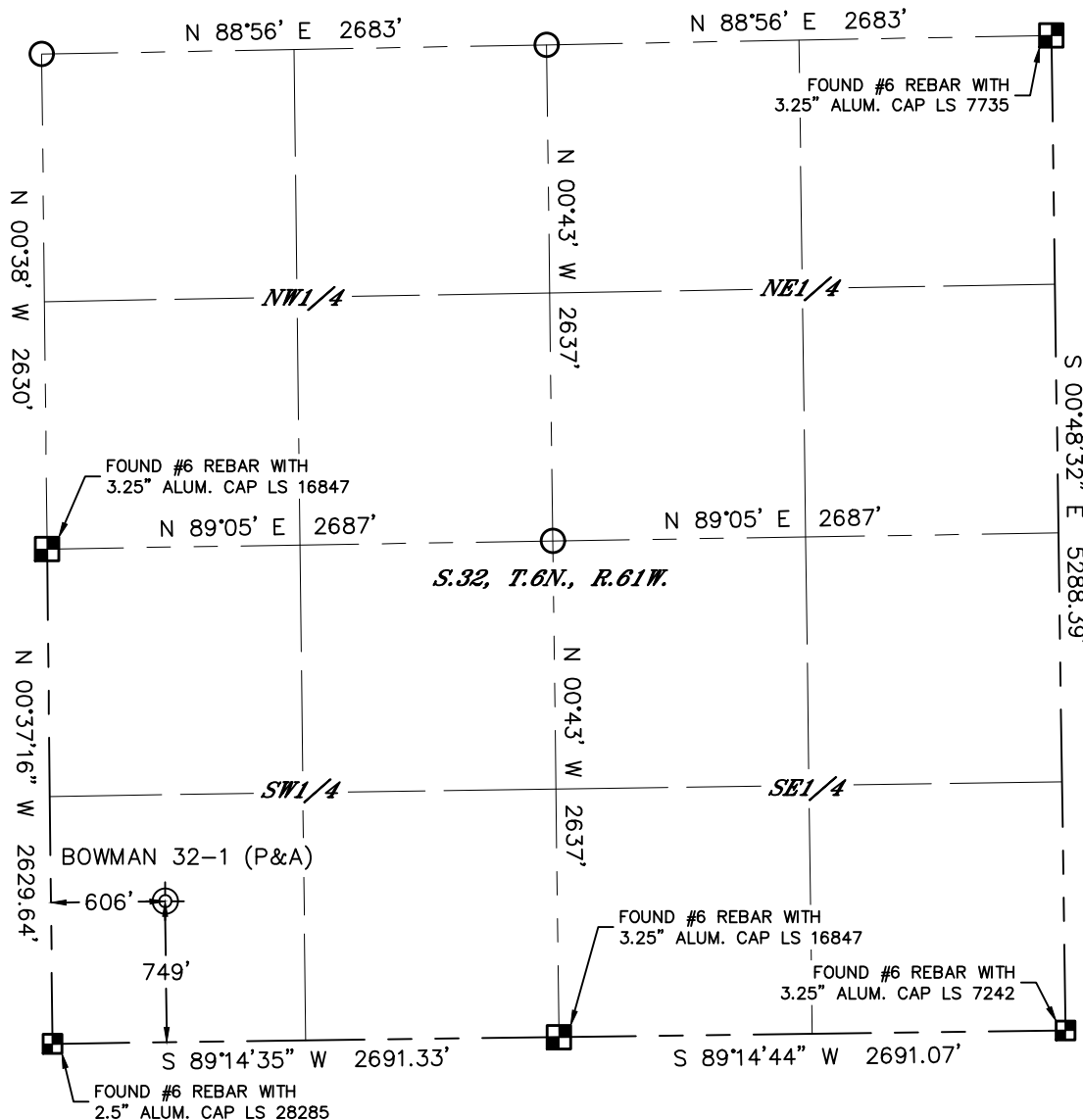


Lat40°, Inc. 6250 W. 10th Street, Unit 2, Greeley, CO 970-515-5294

# PLUGGED AND ABANDONED WELL EXHIBIT

**BOWMAN #32-1**

SECTION: 32  
TOWNSHIP: 6N  
RANGE: 61W  
6TH. P.M.  
WELD COUNTY, CO



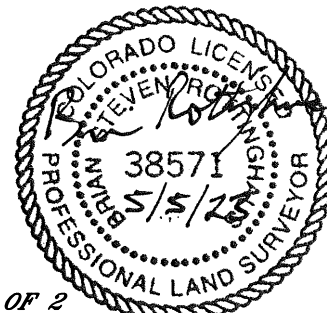
CLIENT: CIVITAS				LANDMAN: CORY NEIGHBORS					
INSTRUMENT OPERATOR: CASEY KOHOUT				SURVEY DATE: 5/3/2023		SURFACE USE: RANGELAND			
SHL FOOTAGE		SHL LAT °	SHL LONG °	SHL PDOP	SHL ELEV (FT.)	SHL 1/4/1/4	SHL S-T-R		
749	FSL	606	FWL	40.43951	-104.24083	1.0	4609	SWSW	32-6-61
DESCRIPTION: FOUND STRONG METAL DETECTOR RING AT NOTED POSITION.									

## NOTE:

- 1) Bearings shown are Grid Bearings of the Colorado State Plane Coordinate System, North Zone, North American Datum 1983. The lineal dimensions as contained herein are based upon the "U.S. Survey Foot."
- 2) Distances to section lines measured at 90 degrees from said section lines.
- 3) Ground elevations are based on an observed GPS elevation (NAVD 1988 DATUM).
- 4) Latitude and Longitude shown are (NAD 83 DATUM).
- 5) Sectional data as shown hereon is from previous surveys and was not verified for this P&A Exhibit.
- 6) This map does not represent a boundary survey.

## LEGEND

- = ALIQUOT MONUMENT AS DESCRIBED
- = CALCULATED POSITION PER MARATHON CROW VALLEY 6-61-32-4H WELL LOCATION PLAT
- ⊙ = ABANDONED WELL



**SHEET 1 OF 2**

Brian S. Rottinghaus—On behalf of Lat40°, Inc.  
Colorado Licensed Professional Land Surveyor No. 38571  
DATE: 5/5/2023  
PROJECT#: 2023159



Lat40°, Inc. 6250 W. 10th Street, Unit 2, Greeley, CO 970-515-5294

## PLUGGED AND ABANDONED WELL EXHIBIT

**BOWMAN #32-1**

SECTION: 32  
TOWNSHIP: 6N  
RANGE: 61W  
6TH. P.M.  
WELD COUNTY, CO  
DATE: 5/3/2023



VIEW NORTH



VIEW WEST



VIEW EAST



VIEW SOUTH