



PIONEER

Pioneer Energy Services

**RADIAL BOND LOG
WITH GAMMA RAY**

Comp. RENEGADE OIL & GAS COMPANY		Company RENEGADE OIL & GAS COMPANY	
Well SARTI 24-10		Well SARTI 24-10	
Field COMANCHE CREEK		Field COMANCHE CREEK	
Co. ELBERT		County ELBERT	
State COLORADO		State COLORADO	
Location: API # : 05-039-06262		Other Services	
NWSE 1980' FSL & 1980' FEL		CCL	
SEC TWP RGE			
Permanent Datum	GL	Elevation 5925'	Elevation
Log Measured From	KB	Above Perm. Datum	K.B. 5936'
Drilling Measured From	KB		D.F. 5935'
			G.L. 5925'
Date of Service	15 JUNE 2018		
Run Number	ONE		
Depth Driller or PBTD	7793		
Depth Logger	7585		
Bottom Log Interval	7585		
Top Log Interval	SURFACE		
Open Hole Size	8.625"		
Type Fluid	PRODUCED FLUID		
Fluid Level	620		
Fluid Density	N/A		
Max. Recorded Temperature	120 degF		
Max. Wellhead Pressure	ZERO		
Wellhead Connection	N/A		
Estimated Cement Top	N/A		
Unit Number	P-129		
Wireline Size	9/32		
Location	FORT MORGAN		
Recorded By	PACE		
Witnessed By	ED INGVE		
	Size	Wt/Ft	Top
Tubing Record			Bottom
Surface Casing	8.625	24#	SURFACE
Production Casing	4.5	11.6#	SURFACE
Liner Record			TD

<<< Fold Here >>>

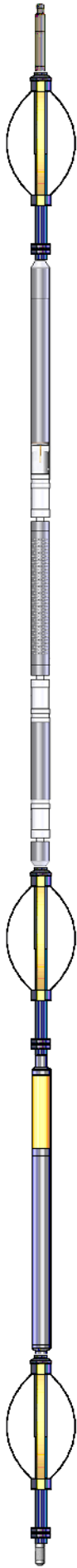
All interpretations are opinions based on inferences from electrical or other measurements and Pioneer Wireline Services, LLC cannot and does not guarantee the accuracy or correctness of any interpretation, and Pioneer Wireline Services, LLC will not be liable or responsible for any loss, costs, damages, or expenses incurred or sustained by anyone resulting from any interpretation made by any of our officers, agents or employees.

Comments

N/A DENOTES NOT AVAILABLE OR NON-APPLICABLE.
HOLE TOP LOADED FROM 450 FEET UP WHILE LOGGING
NO FREE PIPE PASS

THANK YOU FOR USING PIONEER ENERGY SERVICES!

Your Pioneer Energy Services Crew		Tool Data - Services	Serial Number
Engineer:			
Operator:			
Operator:			
Operator:			

Sensor	Offset (ft)	Schematic	Description	Length (ft)	O.D. (in)	Weight (lb)	
TEMP	17.11		Cable Head-Titan_144 1 7/16" Titan Cable Head	1.03	1.44	2.00	
			Centralizer-275 Probe 2 3/4" Probe Adjustable Spring Centralizer	2.88	2.75	15.00	
WVFS8	14.82		PROBE-RBT-DIGITAL-RBL-DCT (070230)	9.21	2.75	105.00	
WVFS7	14.82		Probe 2 3/4" Radii Bond with Temp-Corrosion Package				
WVFS6	14.82						
WVFS5	14.82						
WVFS4	14.82						
WVFS3	14.82						
WVFS2	14.82						
WVFS1	14.82						
WVFCAL	14.82						
WVF3FT	14.82						
WVF5FT	13.82						
HEADVOLT	10.63						
CCL	6.84		Centralizer-275 Probe 2 3/4" Probe Adjustable Spring Centralizer	2.88	2.75	15.00	
GR	4.11		PROBE-GR/CCL-ANALOG-GR/CCL-A (0904.54)		2.75	60.00	
			2 3/4" Gamma with CCL-Analog				
			Centralizer-275 Probe 2 3/4" Probe Adjustable Spring Centralizer	2.88	2.75	15.00	
			Bullnose-PROBE Probe Go Pin Pressure Cap	0.33	1.38	1.00	
<div>Dataset: 6-15-18-cbl.db: field/well/run1/pass9</div> <div>Total length: 23.75 ft</div> <div>Total weight: 213.00 lb</div> <div>O.D.: 2.75 in</div>							

Log Variables

DatabaseC:\ProgramData\Warrior\Data\6-15-18-cbl.db
Dataset field/well/run1/pass9/_vars_


Top - Bottom

BHTEMP_Src TEMP	BOREID in 7.875	BOTTEMP degF 100	CASEOD in 4.5	CASETHCK in 0	CASEWGHT lb/ft 11.5	MAXAMPL mV 0
MINAMPL mV 1	MINATTN db/ft 0.08	PERFS 0	PPT usec 0	SRFTEMP degF 0	TDEPTH ft 0	

Variable Description

BHTEMP_Src : BHTEMP Input Source Selector
BOREID : Borehole I.D.
BOTTEMP : Bottom Hole Temperature
CASEOD : Casing O.D.
CASETHCK : Casing Thickness
CASEWGHT : Casing Weight
MAXAMPL : Maximum Amplitude

MINAMPL : Minimum Amplitude
MINATTN : Minimum Attenuation
PERFS : Perforation Flag
PPT : Predicted Pipe Time
SRFTEMP : Surface Temperature
TDEPTH : Total Depth

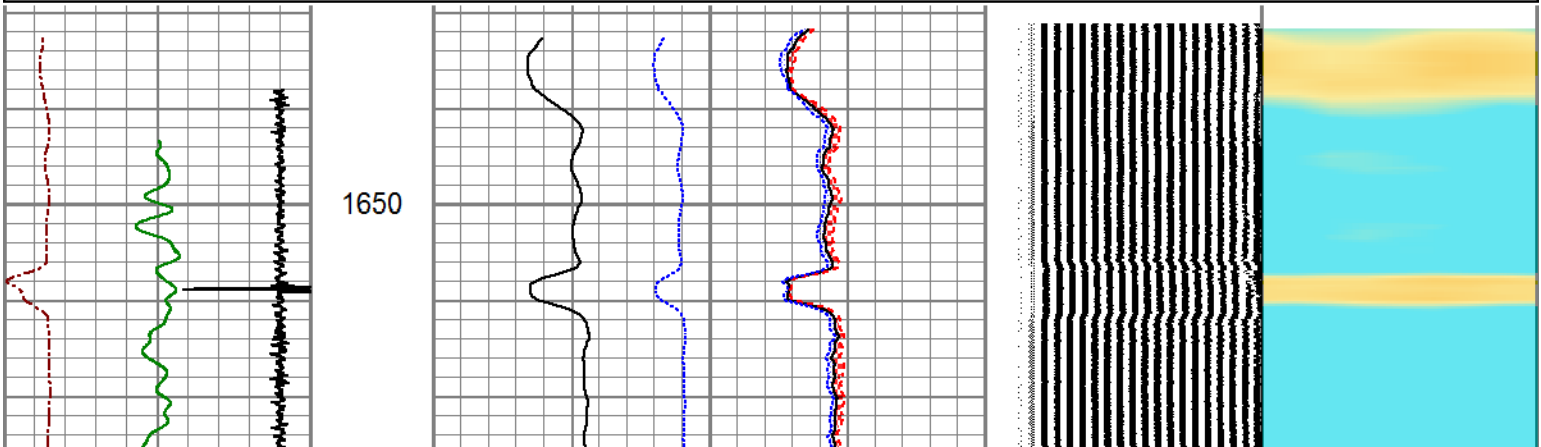


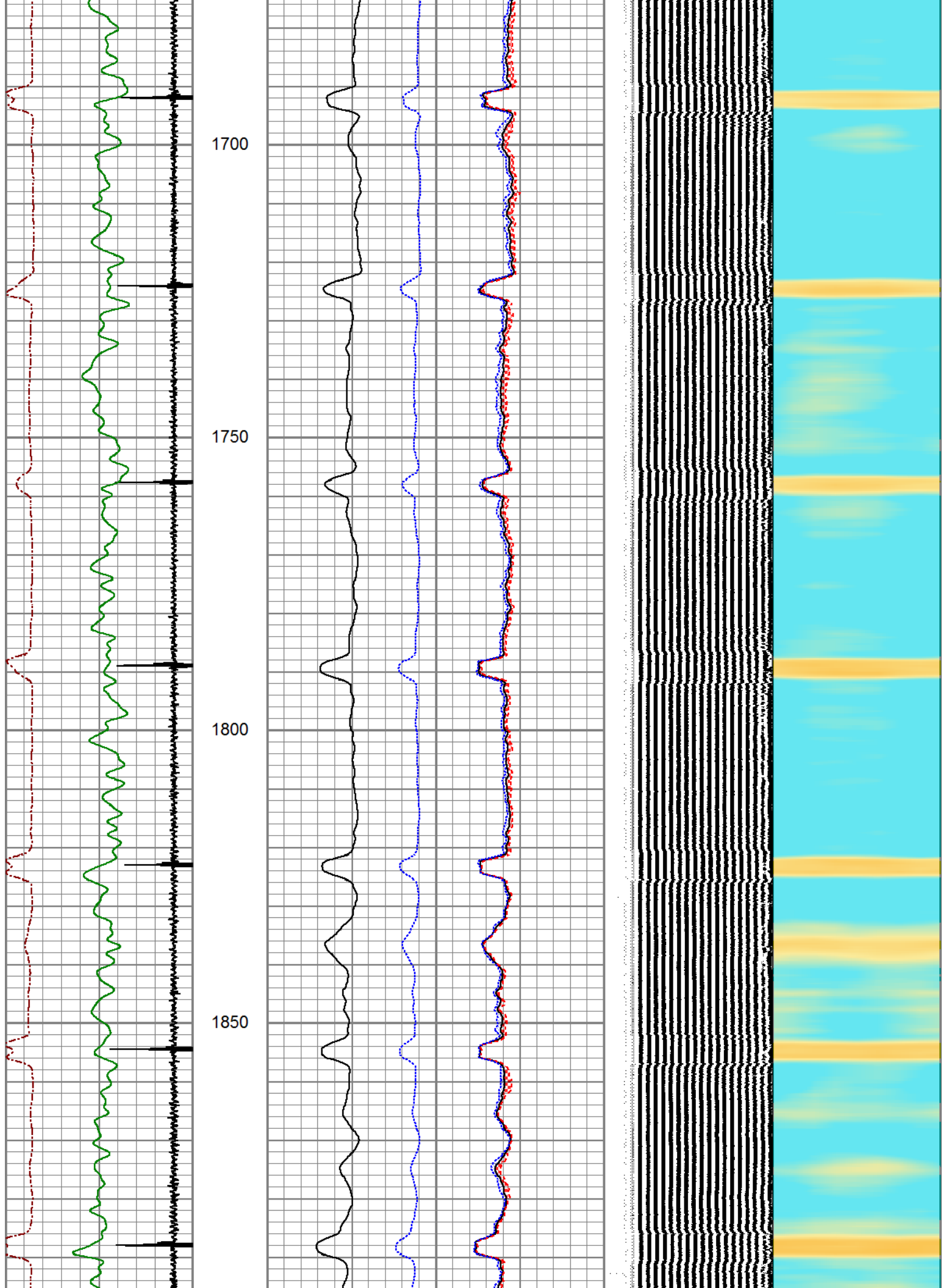
MAIN LOG

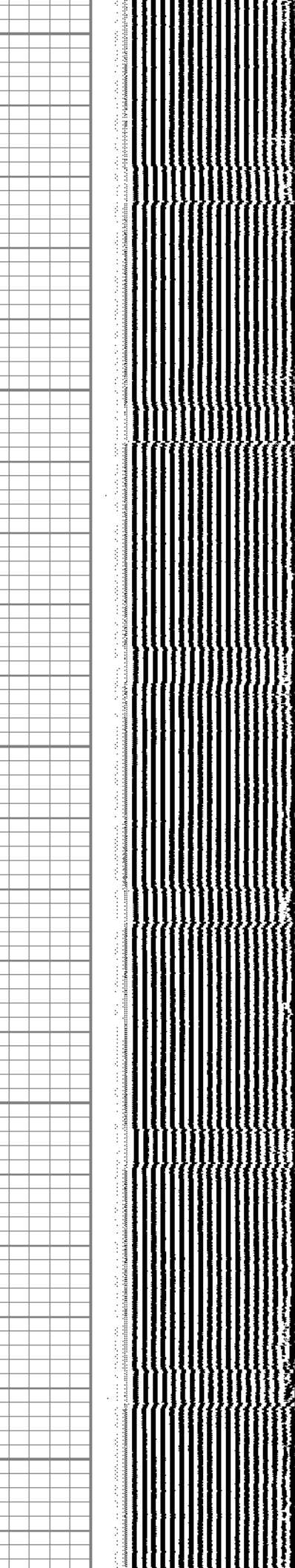
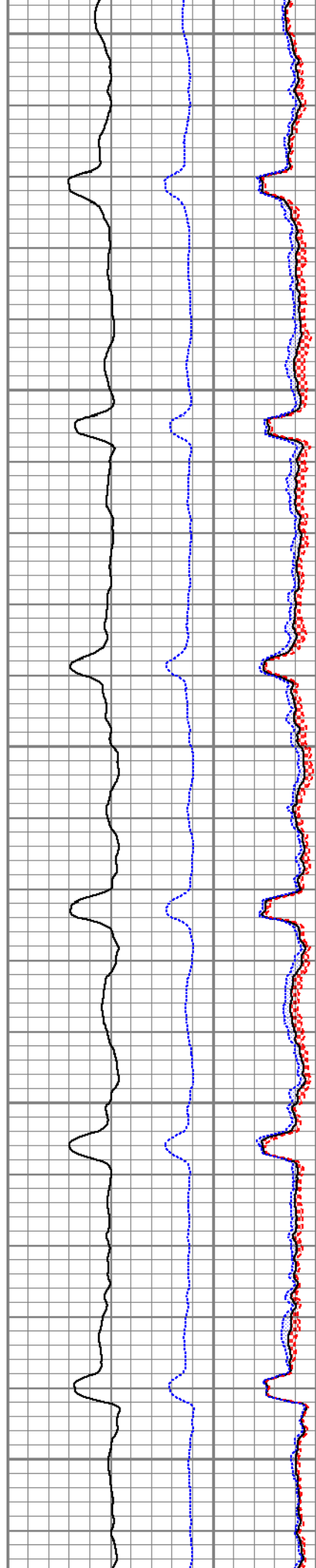
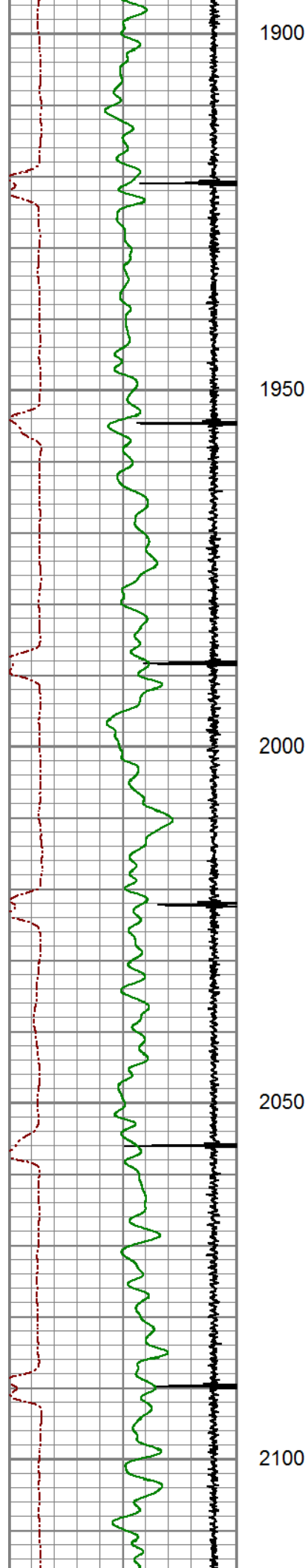
3200 to 1650

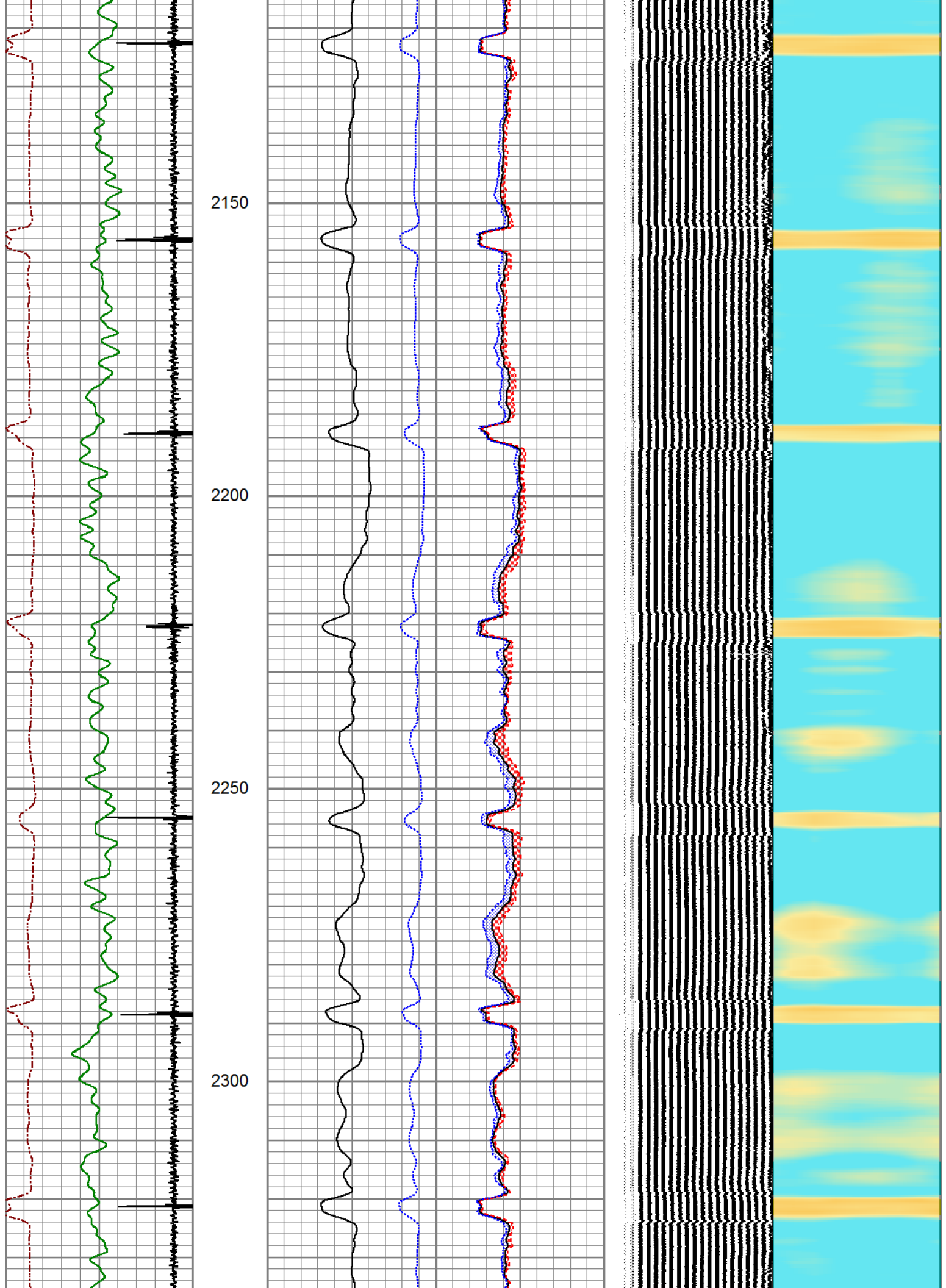
Database File	6-15-18-cbl.db
Dataset Pathname	pass8
Presentation Format	pinr_scbl
Dataset Creation	Fri Jun 15 10:13:01 2018
Charted by	Depth in Feet scaled 1:240

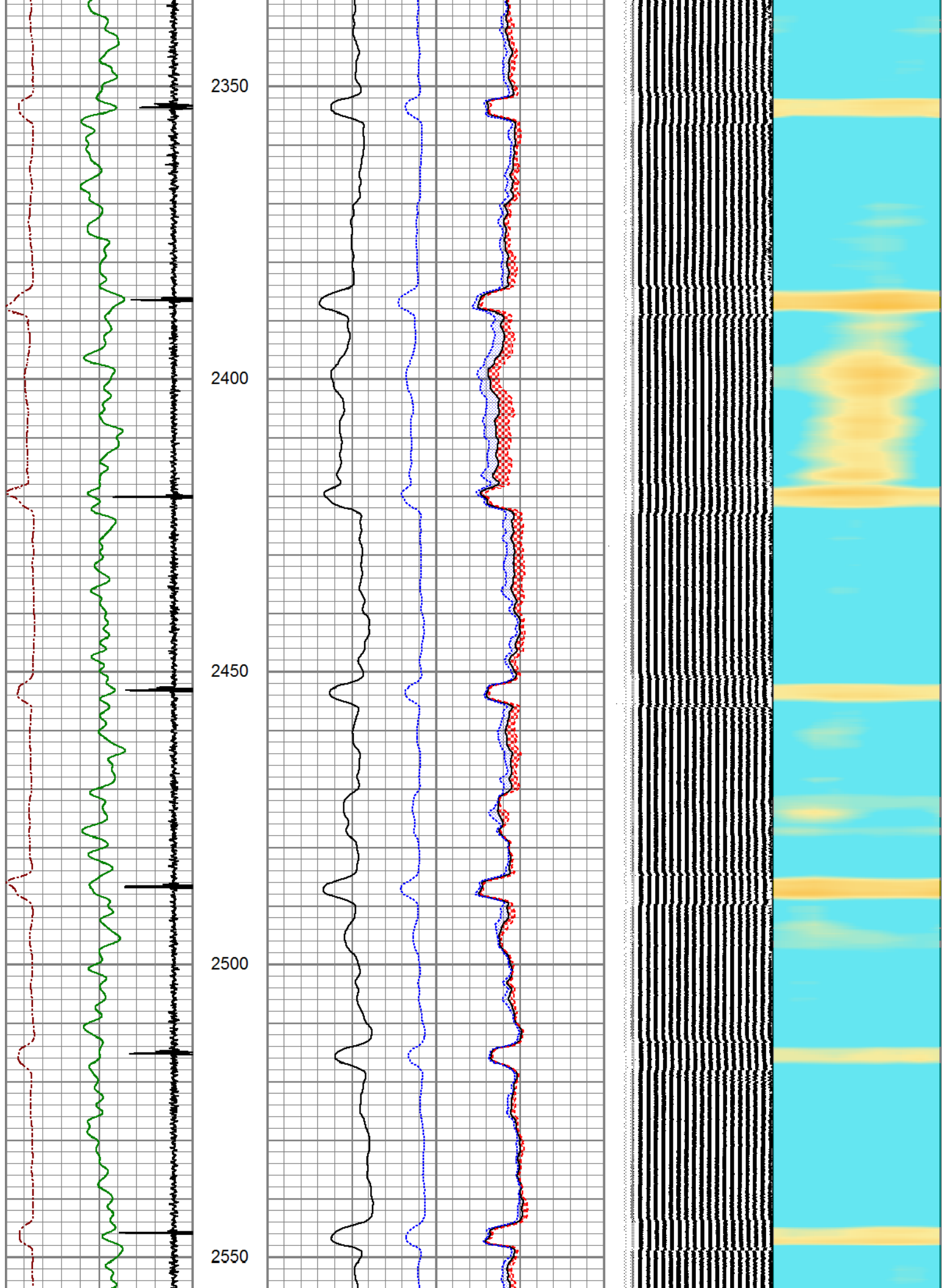
3Ft Travel Time 258 (usec) 158	3' Amplitude 0 (mV) 100	Sector Amplitude Average	VDL 200 (usec) 1200	1 Sector Map 8
-9 Collar Locator 1	3' Amplified Amplitude X 5	0 150		
Gamma Ray 0 (GAPI) 150	0 (mV) 20	Sector Amplitude Maximum		
	1 Bond Index 0	0 150		
		Sector Amplitude Minimum		
		0 150		

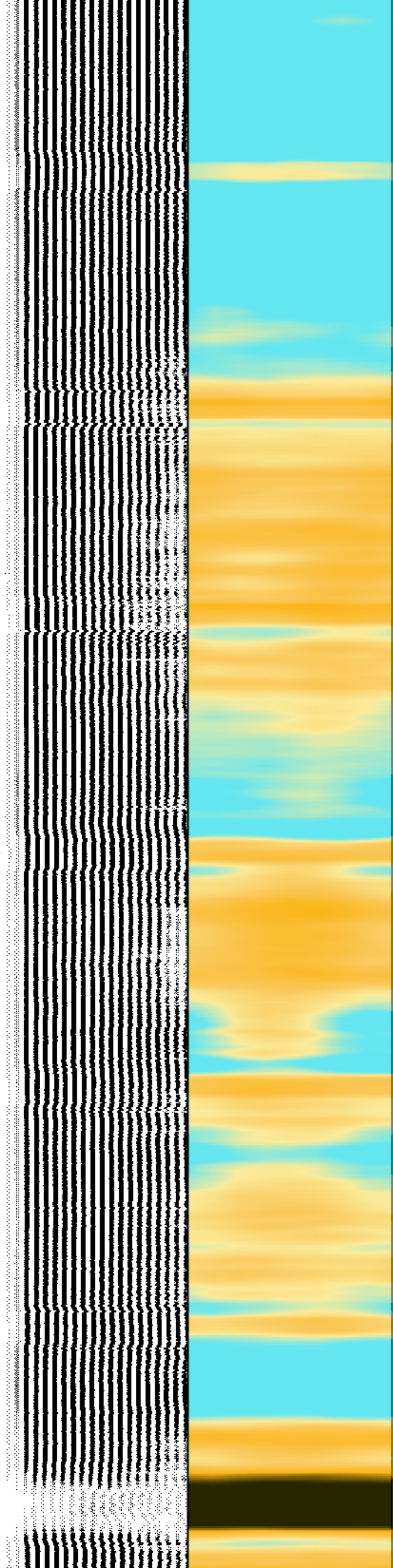
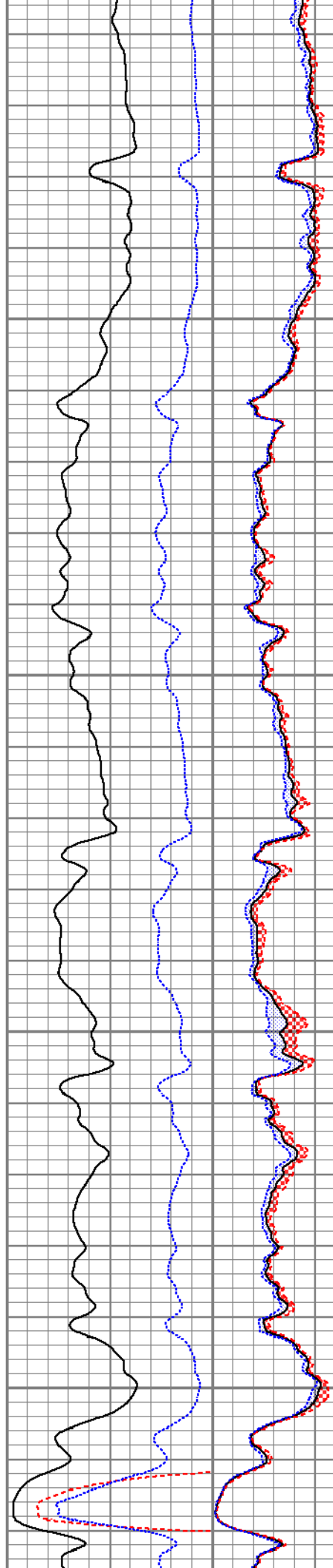
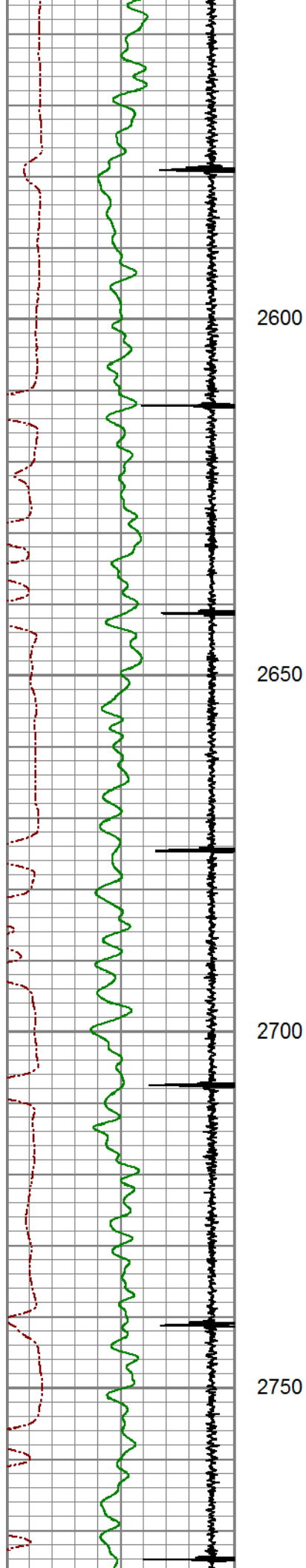


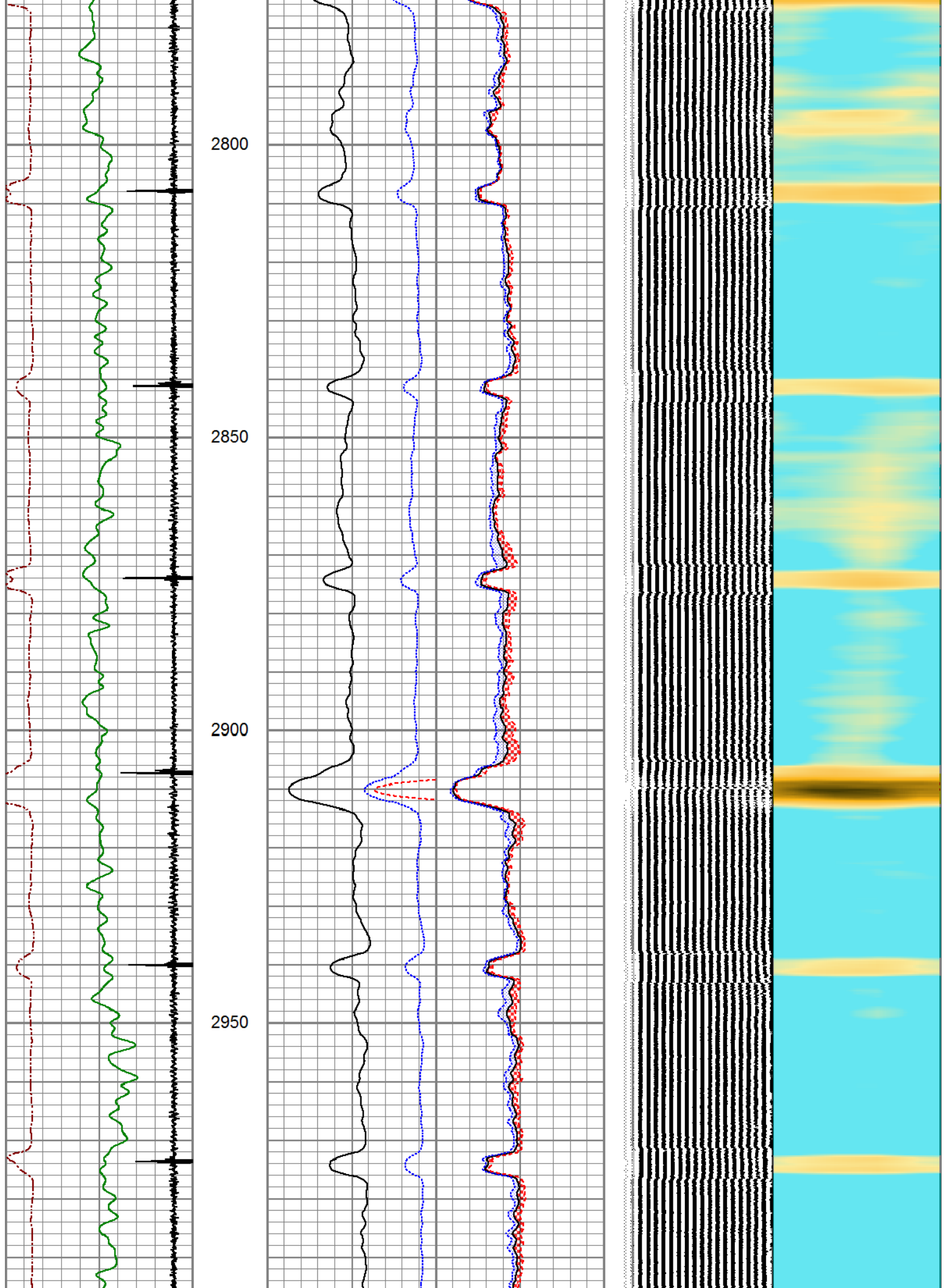


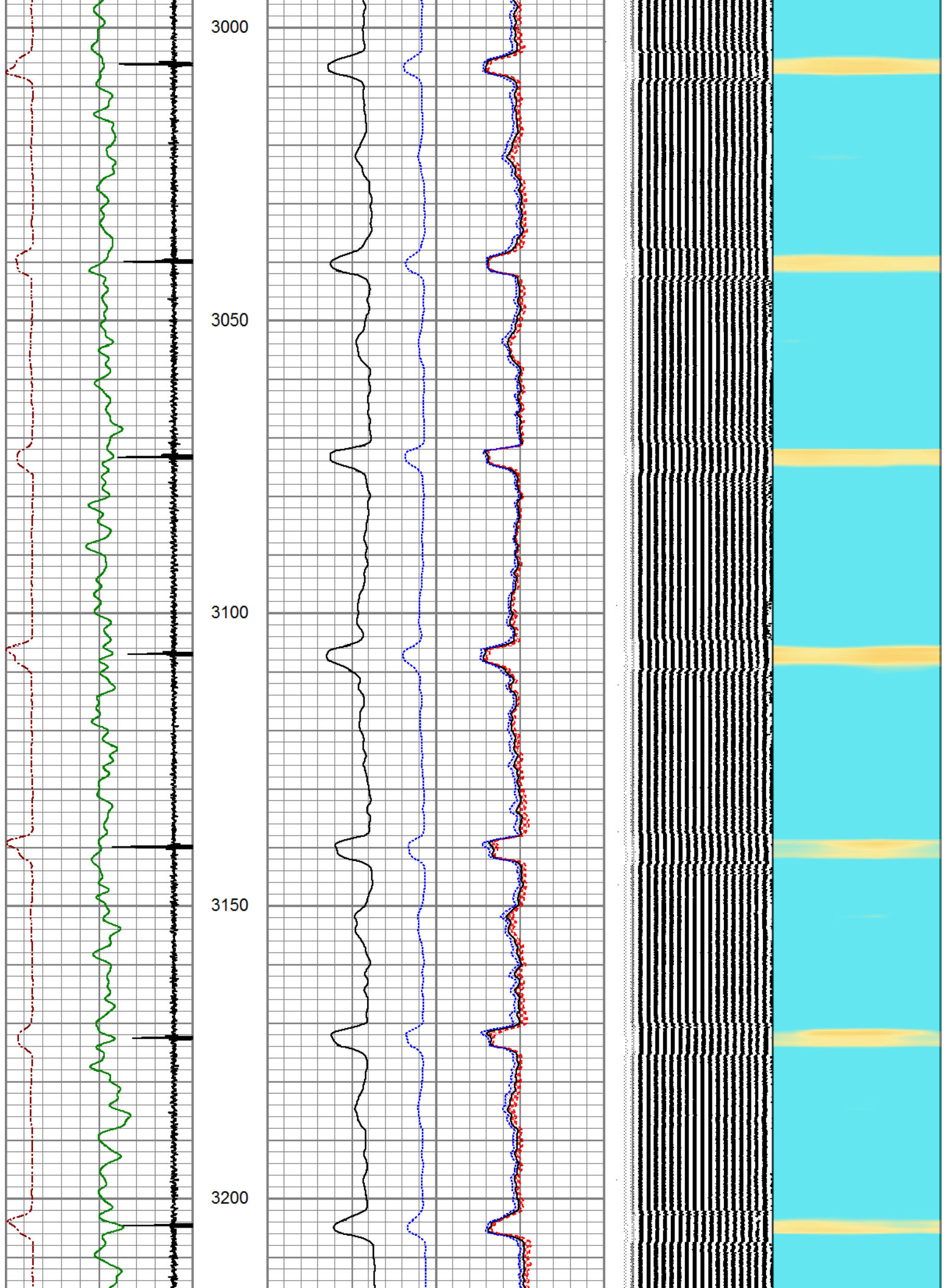


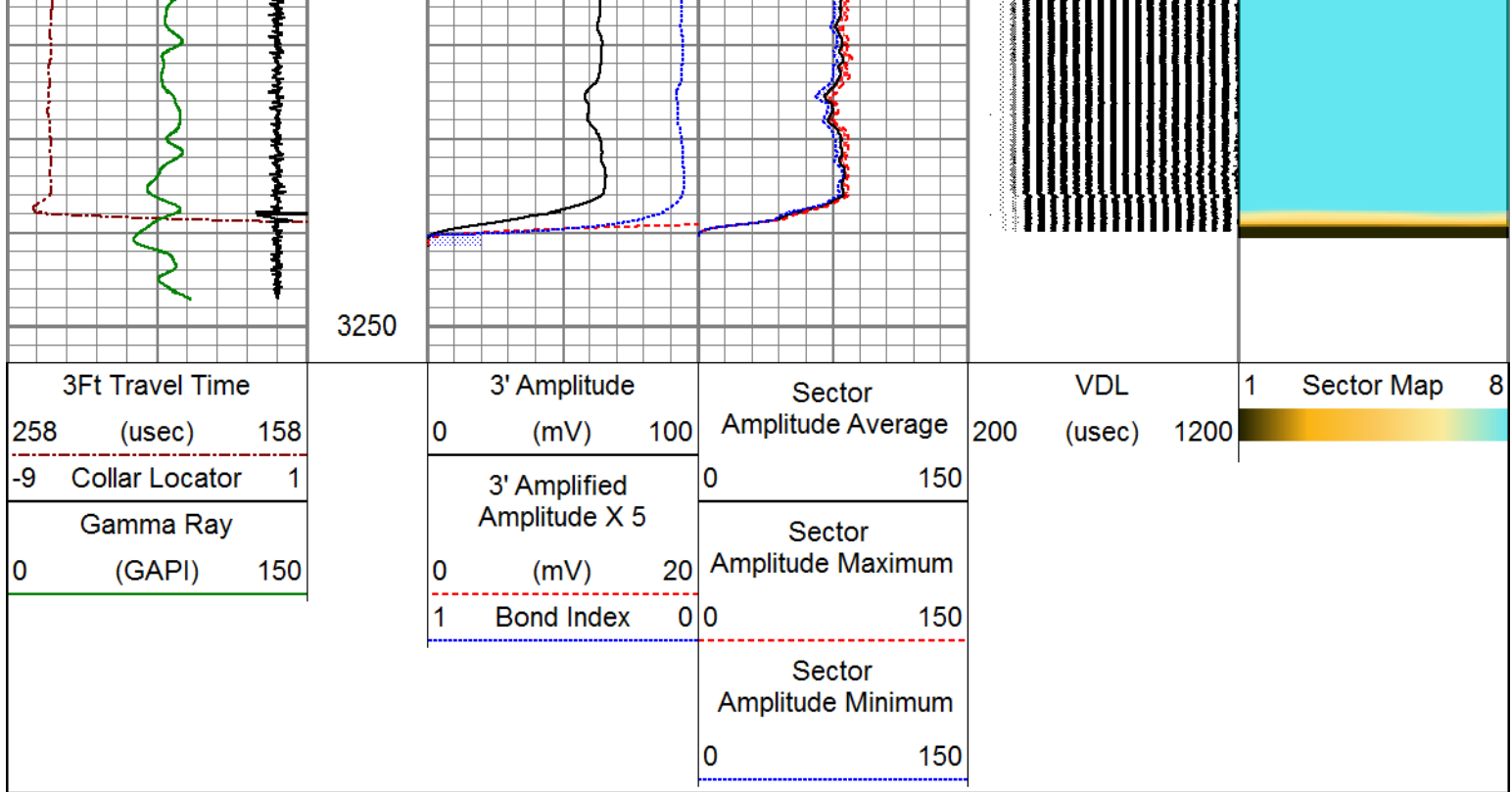















MAIN LOG

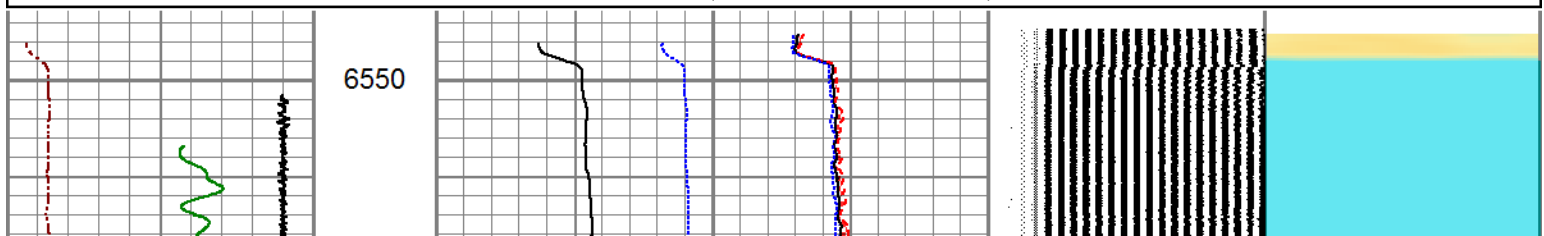
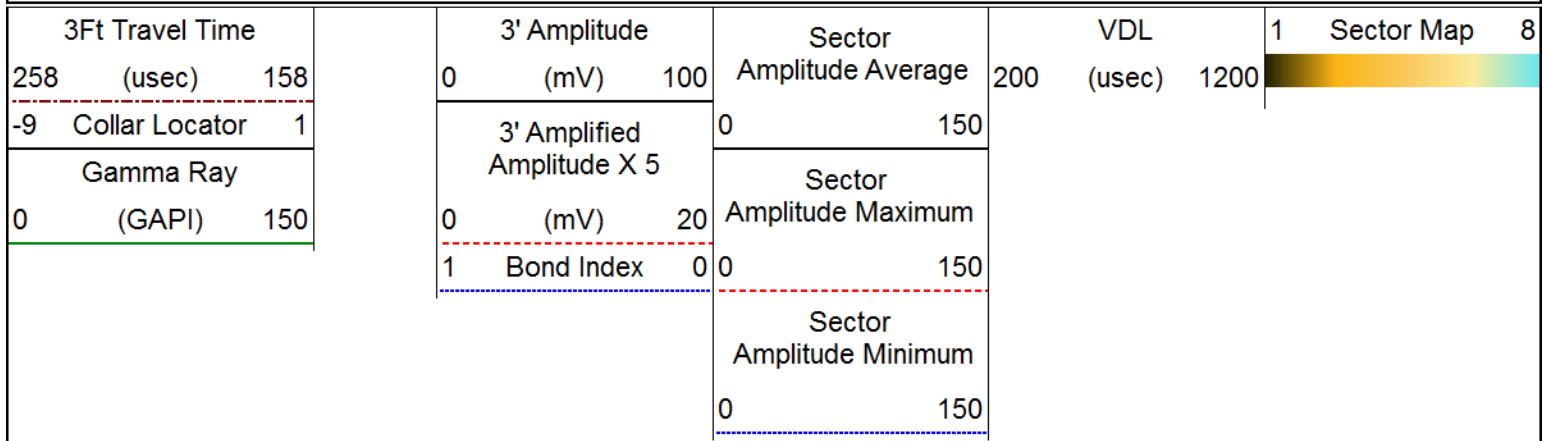
3200 to 1650

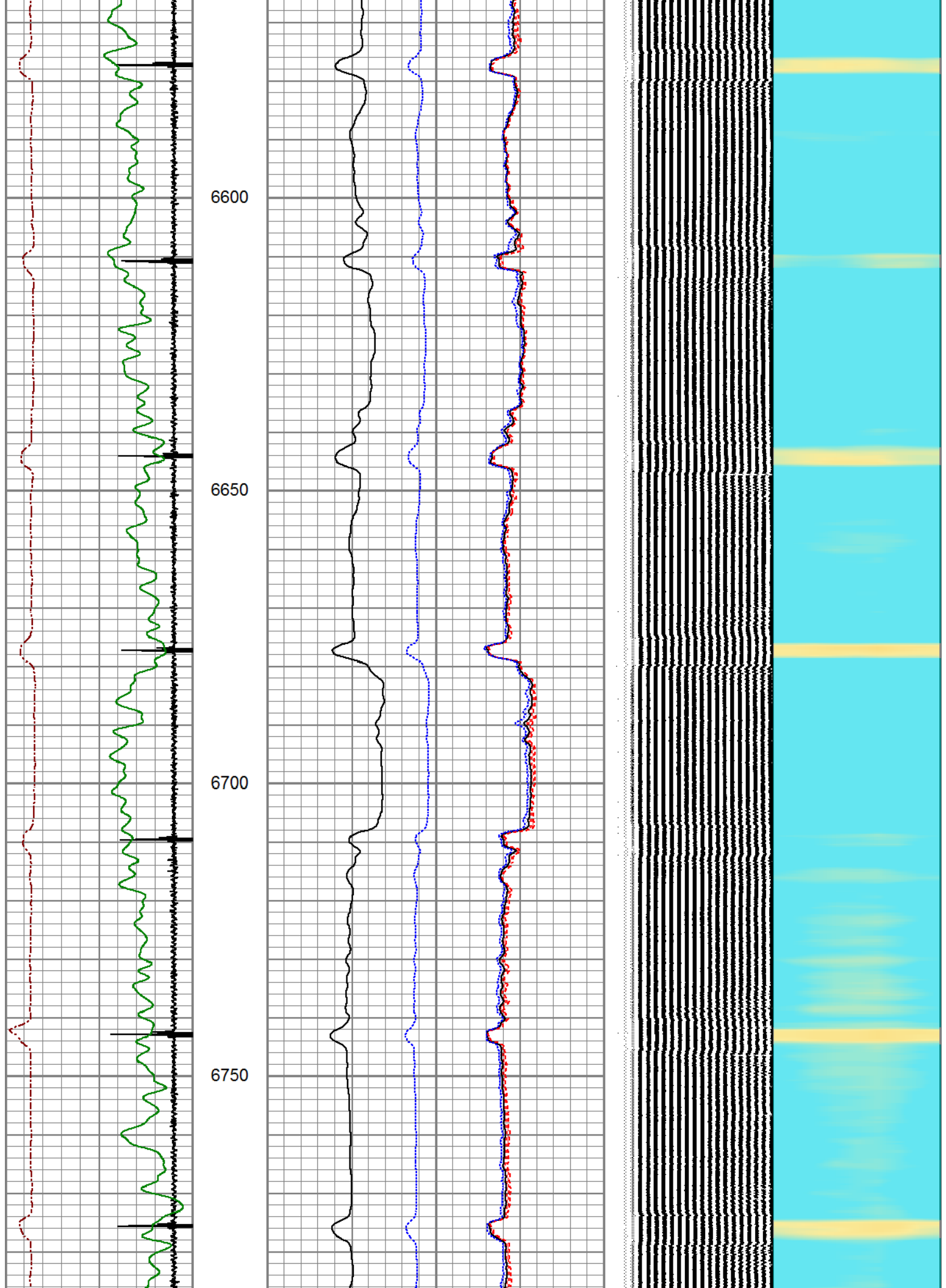


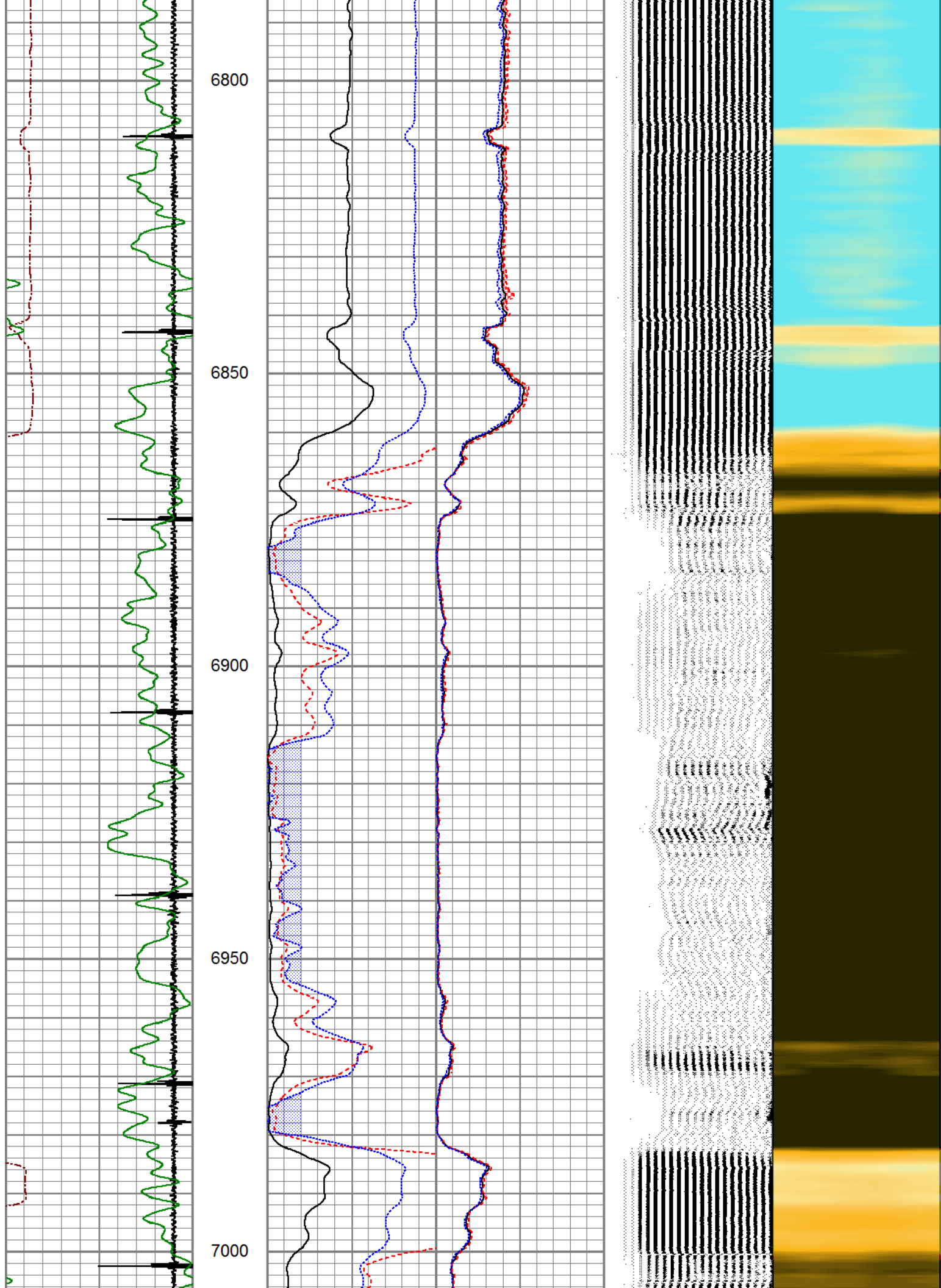
MAIN LOG

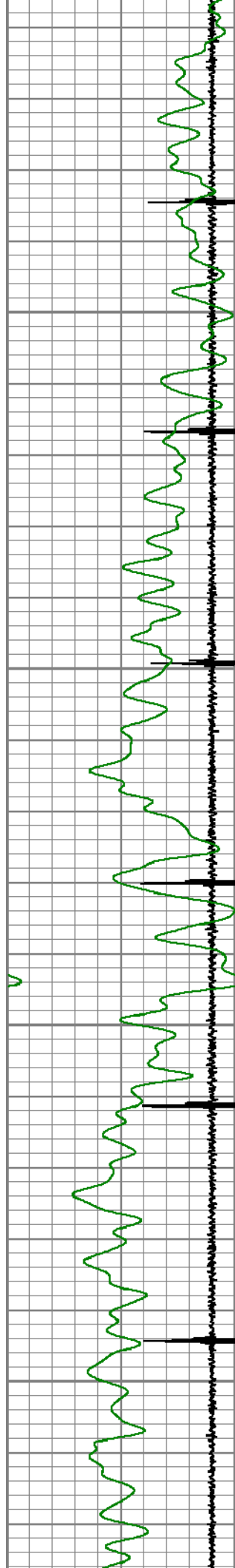
TD to 6600

Database File	6-15-18-cbl.db
Dataset Pathname	pass7
Presentation Format	pinr_scbl
Dataset Creation	Fri Jun 15 09:48:46 2018
Charted by	Depth in Feet scaled 1:240







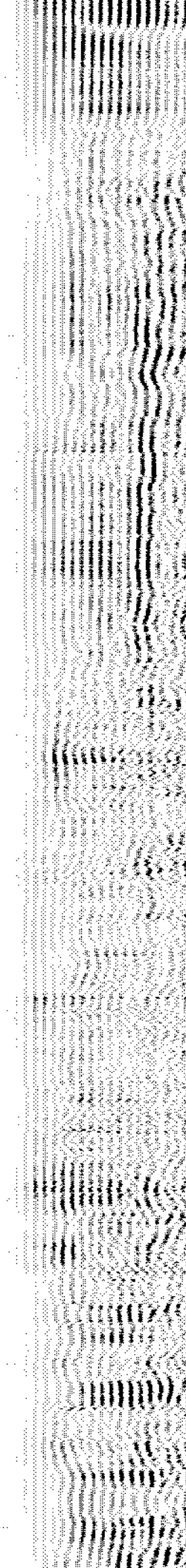
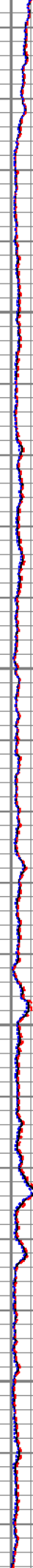
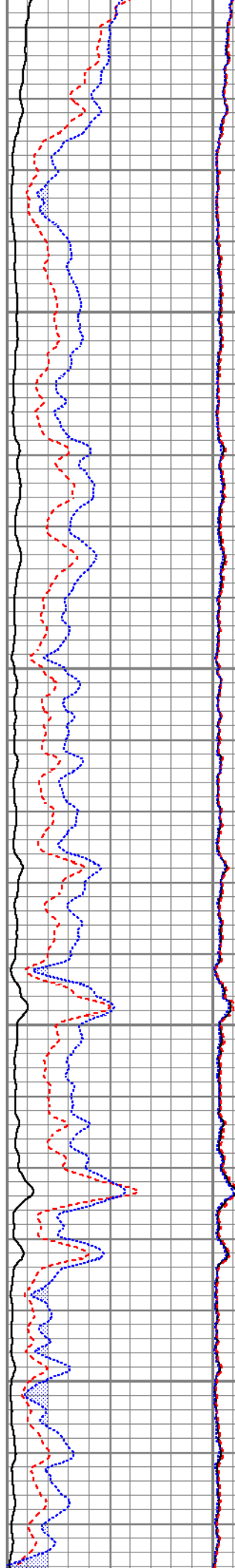


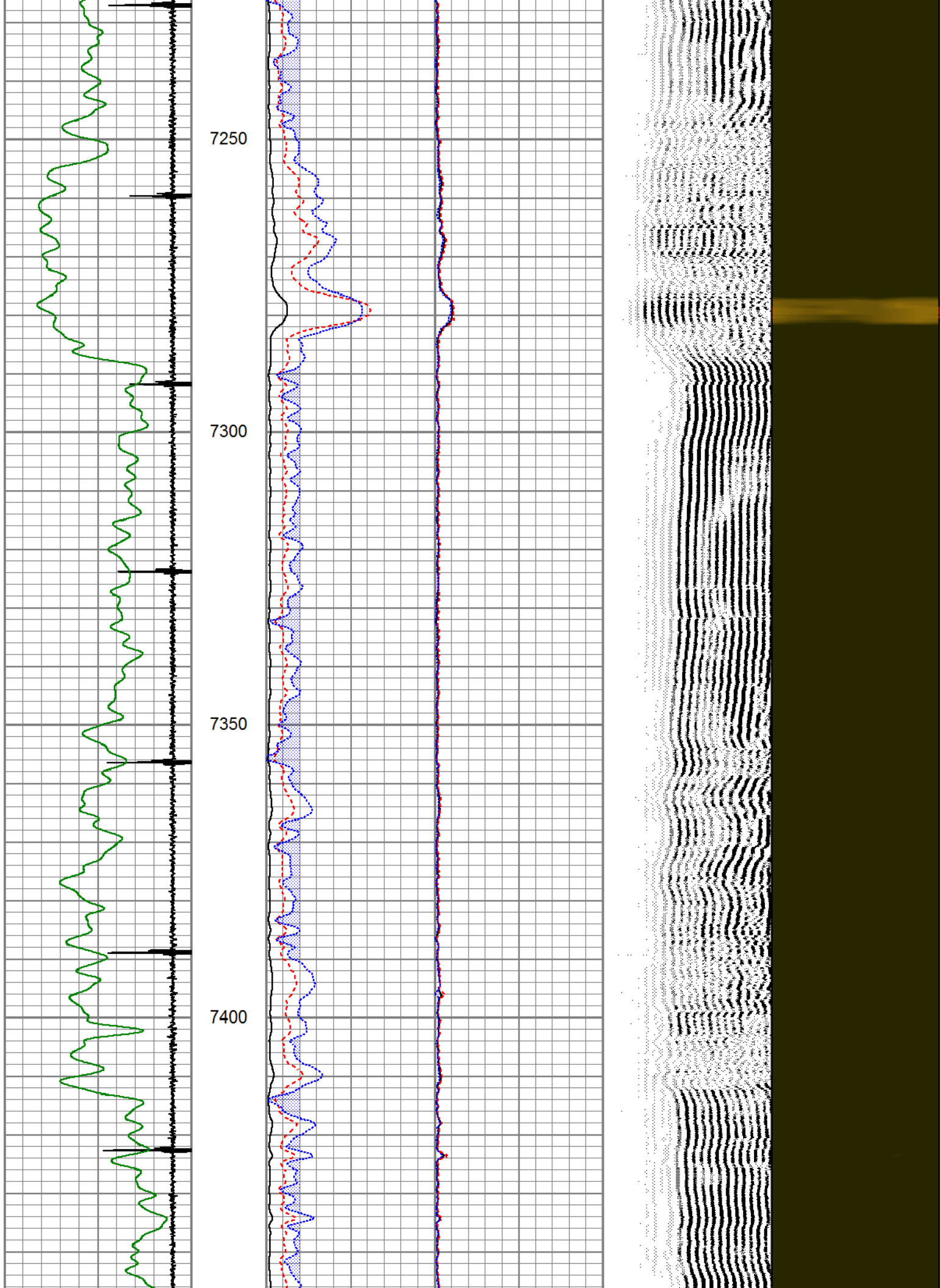
7050

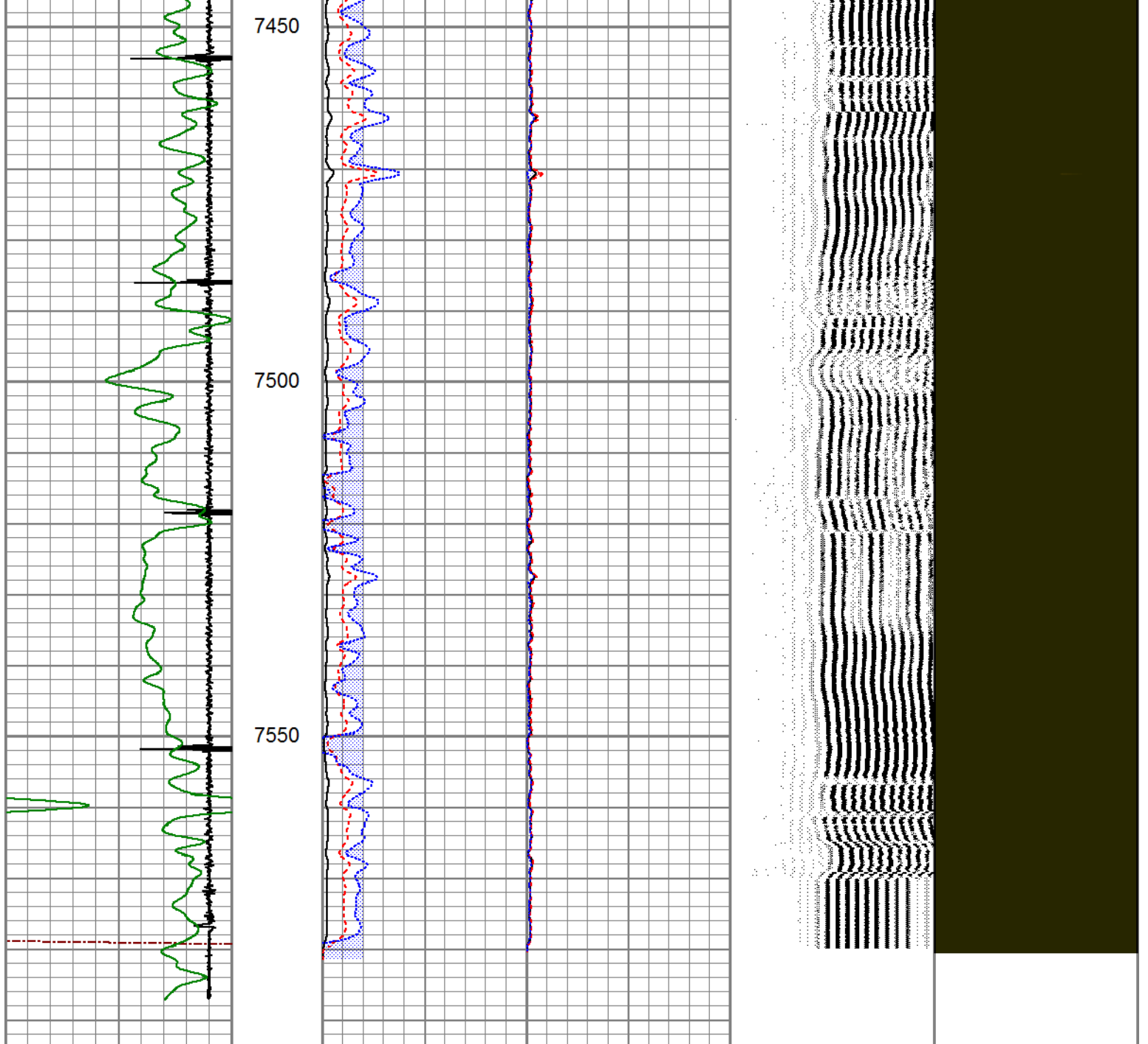
7100


7150

7200







3Ft Travel Time			3' Amplitude			Sector			VDL			1 Sector Map 8	
258	(usec)	158	0	(mV)	100	Amplitude Average			200	(usec)	1200		
-9	Collar Locator	1	3' Amplified Amplitude X 5			0 150							
Gamma Ray			0 (mV) 20			Sector Amplitude Maximum							
0	(GAPI)	150	1 Bond Index 0			0 150							
						Sector Amplitude Minimum							
						0 150							


PIONEER

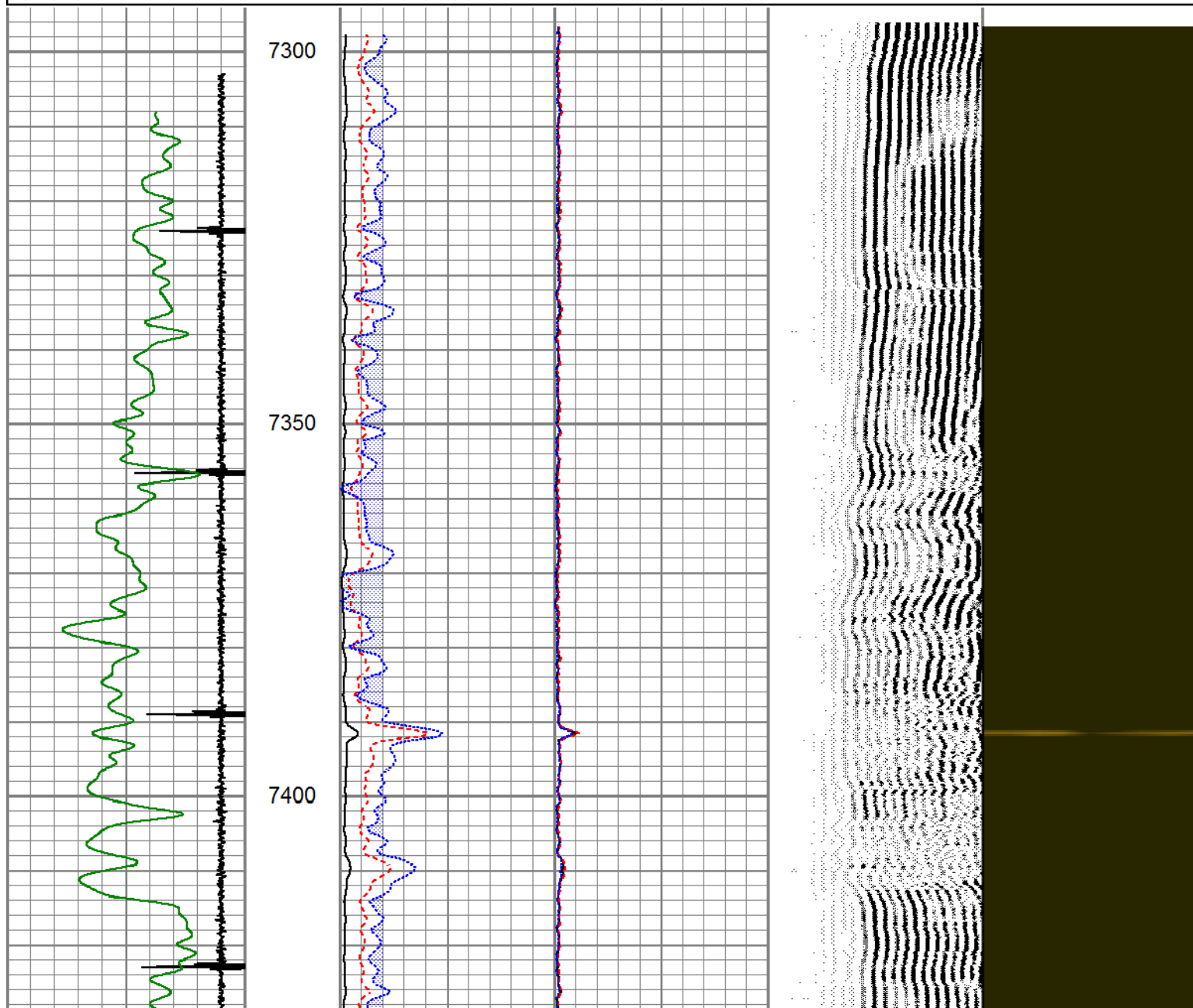
Pioneer Energy Services

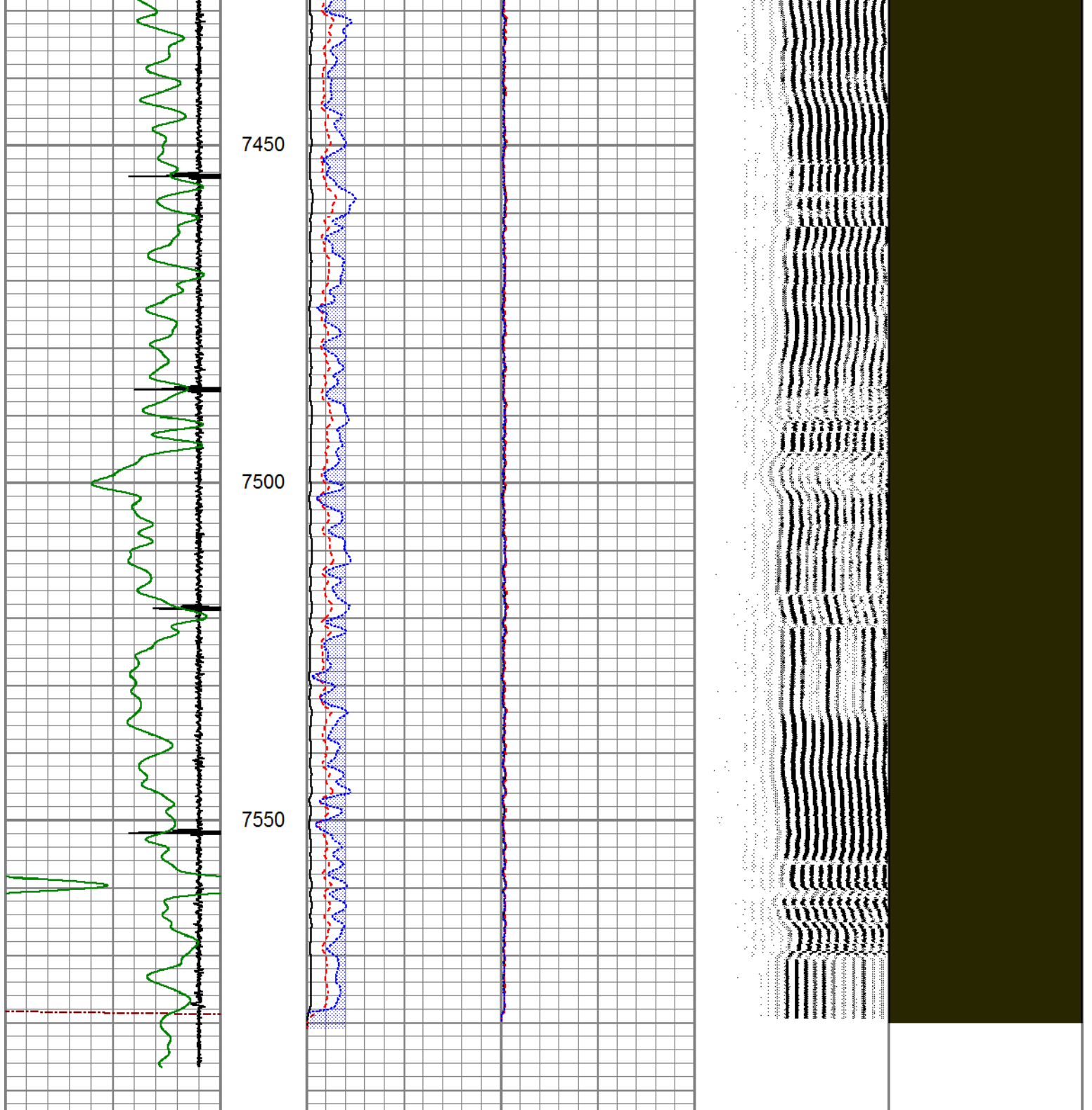
REPEAT SECTION

7570 to 7300

Database File 6-15-18-cbl.db
Dataset Pathname pass6
Presentation Format pinr_scbl
Dataset Creation Fri Jun 15 09:42:17 2018
Charted by Depth in Feet scaled 1:240

3Ft Travel Time				3' Amplitude		Sector		VDL			1		Sector Map		8	
258	(usec)	158		0	(mV)	100	Amplitude Average		200	(usec)	1200					
-9 Collar Locator 1				3' Amplified Amplitude X 5		0 150										
Gamma Ray				0 (mV) 20		Sector Amplitude Maximum										
0 (GAPI) 150				1 Bond Index 0		0 150										
						Sector Amplitude Minimum										
						0 150										





3Ft Travel Time		3' Amplitude		Sector		VDL		1 Sector Map 8	
258	(usec)	158	(mV)	100	Amplitude Average	200	(usec)	1200	
-9	Collar Locator	1	3' Amplified Amplitude X 5		0 150				
Gamma Ray		(mV)		20	Sector Amplitude Maximum				
0	(GAPI)	150	Bond Index		0 150				
					Sector Amplitude Minimum				
					0 150				



REPEAT SECTION

PIONEER

Pioneer Energy Services

7570 to 7300



PIONEER

Pioneer Energy Services

Company	RENEGADE OIL & GAS COMPANY
Well	SARTI 24-10
Field	COMANCHE CREEK
County	ELBERT
State	COLORADO