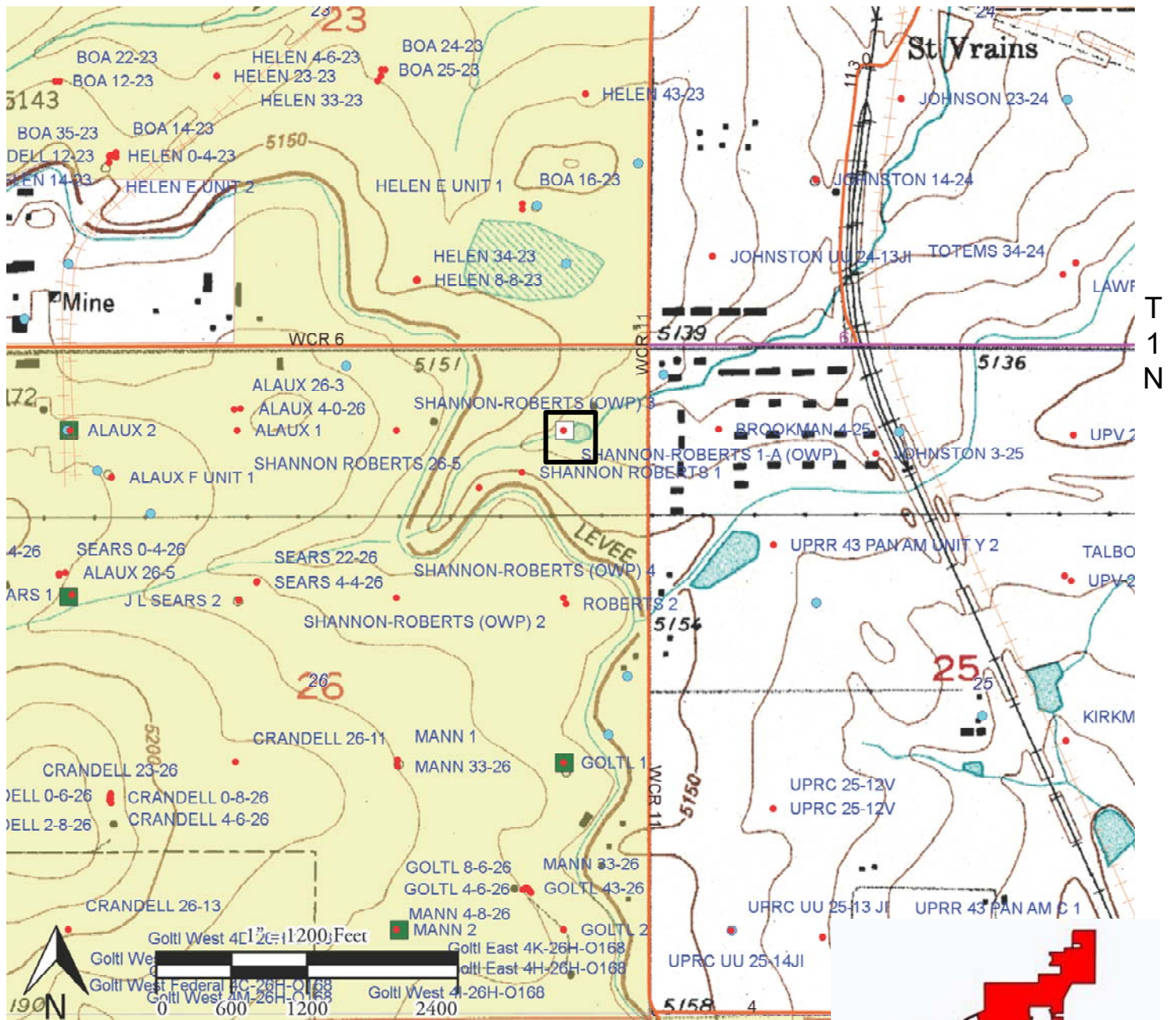


R68W



LEGEND:

- Site Location
- Oil and Gas Well
- Water Well Location
- Pit (Status Unknown)
- Pit (Closed)
- ~ Stream Drainage
- Roads and Streets
- OWP – Orphaned Well Program

Index Map of Broomfield County, Colorado

Location ID: 321499
Coordinates: 40.027598 -104.963785

Drawing Date: 01/10/2023	Drawn By: JWH	Facility ID: 240910
Revision: 0	Revised By:	API #: 05-014-08698

FIGURE 1
GENERAL SITE LOCATION MAP
Natural Resources Group Inc. - 10369
Shannon-Roberts-61N68W/26 NENE
NE ¼ NE ¼ Section 26 T1N, R68W, 6
City and County of Broomfield Colorado