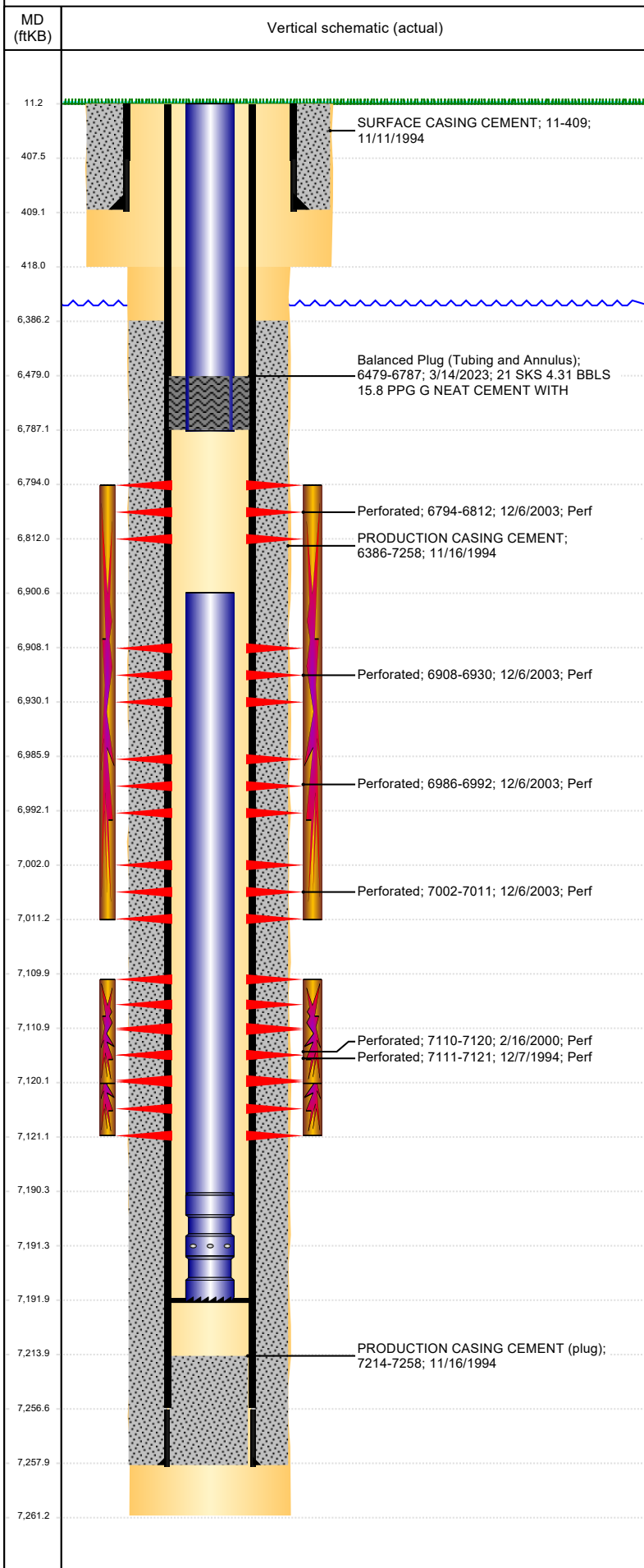




# P&A Wellbore For State

Well Name: KALLAS 04-42

Land, Original Hole, 5/4/2023 12:48:13 PM



Well Header									
Surface UWI 0512318551			Business Unit Rockies		Gov Auth Dist			Prod Tree Loc Land	
Orig. KB to Gnd (ft) 11.00		Original Spud Date 11/11/1994		Abandon Date		Well Sub-Status TA			High Pres N
Comment NIOB PERFS ZONE A- 6794'-6812' NOT REPORTED ON ST FORM. FIELD OPS NOTICE- FLOWLINES ABANDONED, RCVD 6/28/17. STATE SHOWS SHUT IN SINCE OCT 2016.									
Surface Location (Congressional)									
Quarter 3 NW	Quarter 4 SE	Section 4	Township 4	Twnshp N N	Range 65	Rng E/W W	Latitude (°) 40.33943	Longitude (°) -104.66492	
Wellbore Sections									
Section Des			Hole Size (in)		Act Top (ftKB)		Act Btm (ftKB)		
SURFACE			12 1/4		11.0		418.0		
PRODUCTION			7 7/8		418.0		7,261.0		
Casing Strings									
Csg Des			Run Date	OD (in)	Wt/Len (lb/ft)	Grade	Top Depth (MD) (ftKB)	Set Depth (MD) (ftKB)	
Surface			11/11/1994	8 5/8	24.00	?	11	409	
Production Casing			11/16/1994	4 1/2	12.60	N-80	11	7258	
Cement									
Des					Start Date		Top (ftKB)		Btm (ftKB)
SURFACE CASING CEMENT					11/11/1994		11.0		409.0
PRODUCTION CASING CEMENT					11/16/1994		6,386.0		7,258.0
Balanced Plug (Tubing and Annulus)					3/14/2023		6,479.0		6,787.0
Zone Statuses									
Zone Name		Status Date	Status	Fluid Type	Job			Prod Method	
CODELL		1/24/2015	PR		Abandon Well - Temporary, 12/29/2022 00:00				
CODELL		3/14/2023	Closed						
NIOBRARA		1/19/2015	PR		Abandon Well - Temporary, 12/29/2022 00:00				
NIOBRARA		3/14/2023	Closed						
Perforation Data									
Linked Zone			Explosive Type	Entered Shot Total	Top (ftKB)		Btm (ftKB)		Date
NIOBRARA, Original Hole			A	18	6,794.0		6,812.0		12/6/2003
NIOBRARA, Original Hole			B	22	6,908.0		6,930.0		12/6/2003
NIOBRARA, Original Hole			C	6	6,986.0		6,992.0		12/6/2003
NIOBRARA, Original Hole			C	9	7,002.0		7,011.0		12/6/2003
CODELL, Original Hole				40	7,110.0		7,120.0		2/16/2000
CODELL, Original Hole				40	7,111.0		7,121.0		12/7/1994
Stimulation Intervals									
Zone				Start Date		Top (ftKB)		Btm (ftKB)	
NIOBRARA, Original Hole				12/8/2003		6,794.0		7,011.0	
NIOBRARA, Original Hole				12/12/2003		6,794.0		7,011.0	
CODELL, Original Hole				2/23/2000		7,110.0		7,120.0	
CODELL, Original Hole				12/10/1994		7,111.0		7,121.0	
Other In Hole									
Run Date		Des			Make		OD (in)	Top (ftKB)	Btm (ftKB)
Logs									
Date		Type				Depth Top (MD) (ftKB)		Btm (ftKB)	
11/16/1994		COMPENSATED DENSITY				3,900		7,225.0	
11/16/1994		INDUCTION				400		7,253.0	
12/4/1994		CEMENT BOND				6,240		7,210.0	
1/10/2012		GYRO				11		6,800.0	
Plug Back Total Depths									
Date		Type		Com				PBTD (ftKB)	
12/17/2003		FILL		TAG TO LAND TBG				7,198	
3/7/2013		FILL		CLEAN OUT				7,192	